



Pacific  
Community  
Communauté  
du Pacifique

## 19<sup>th</sup> South West Pacific Hydrographic Commission Meeting

VTC, 23 -25 February 2022

# Highlights of Regional Capacity Building Initiatives – Pacific Safety of Navigation project

Francesca Pradelli  
Regional Safety Navigation Adviser  
GEM Division - SPC



# Background



**Project name:** Pacific Safety of Navigation Project – Phase II and III

**Objective:** Strengthening safety of navigation in the Pacific through enhanced **capacity**, governance, and infrastructure

**Donor:** International Foundation for Aids to Navigation (IFAN)

**Timeframe:** Phase I: Aug. 2016 – July 2018 /// Phase II: Aug. 2018 – July 2021 /// **Phase III: Aug. 2021 – July 2024**

**Target countries:** 13 - Cook Islands, Kiribati, Federated States of Micronesia, Fiji, Marshall Islands, Nauru, Niue, Palau, Samoa, Solomon Islands, Tonga, Tuvalu, and Vanuatu

## Key results:

- 1) PICTs **governance** systems to deliver effective AtoN services are strengthened both nationally and regionally.
- 2) PICTs **capacity** to provide effective AtoN services in line with international maritime instruments is strengthened.
- 3) PICTs AtoN **infrastructures** are adequate for the volume of traffic and the degree of risk identified .



# Capacity Building updates since 18<sup>th</sup> SWPHC



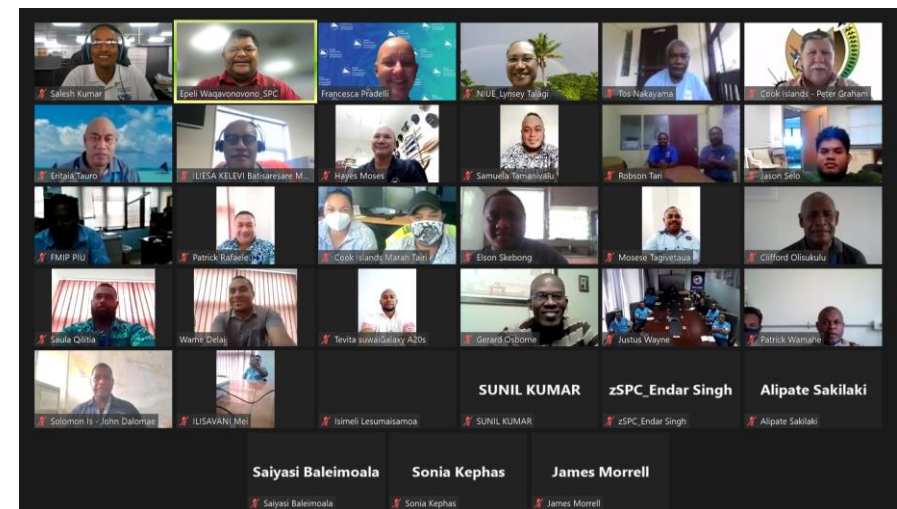
## Phase II

- **Tonga** autonomously conducted SIRA risk assessment of Ha'apai (2 Level 1 Managers, 1 of which trained by SPC) with support from SPC.
- **Solomon Islands** autonomously conducted SIRA risk assessment of Noro (2 Level 1 Managers, 1 of which trained by SPC) with support from SPC.



## Phase III

- Drafted and delivered to all target PICs one **regional basic MSI regional webinar** in November 2021 (33 attendees from 9 PICTs).
- Drafted and delivered one **national** basic MSI regional webinar in November 2021 to Kiribati and in December 2021 to Cook Islands.
- 2 more national basic MSI regional webinar TBD.
- Drafted and delivered to all target PICs one **regional Aids to Navigation maintenance webinar** (34 attendees from 9 PICTs).
- 8 **national** Aids to Navigation maintenance webinar TBD.



# Key learnings

- a) Format regional webinar / national webinars very successful:
- more national stakeholders engaged
  - platform to share knowledge among countries
  - ad hoc information provided to each country
- b) COVID 19 has had silver linings: capacities provided over the years can be put into practice.





# What's next?



- 1 regional IALA Level 1 Manager Course in partnership with IALA (TBC)
- National MSI webinars + national AtoN maintenance webinars



Pacific  
Community  
Communauté  
du Pacifique

# The SWPHC is invited to:

**Note** the capacity building activities delivered by the SPC Pacific Safety of Navigation project despite the challenges caused by COVID-19 and;

**Acknowledge** the practical positive impact of the SPC Pacific Safety of Navigation project's long term capacity building strategy on target Pacific Island Countries in the delivery of safety of navigation services.



Pacific  
Community  
Communauté  
du Pacifique



VINAKA