



# KIA ORA WELLINGTON 2023

## User Feedback and Hydrographic Aspirations in the South West Pacific

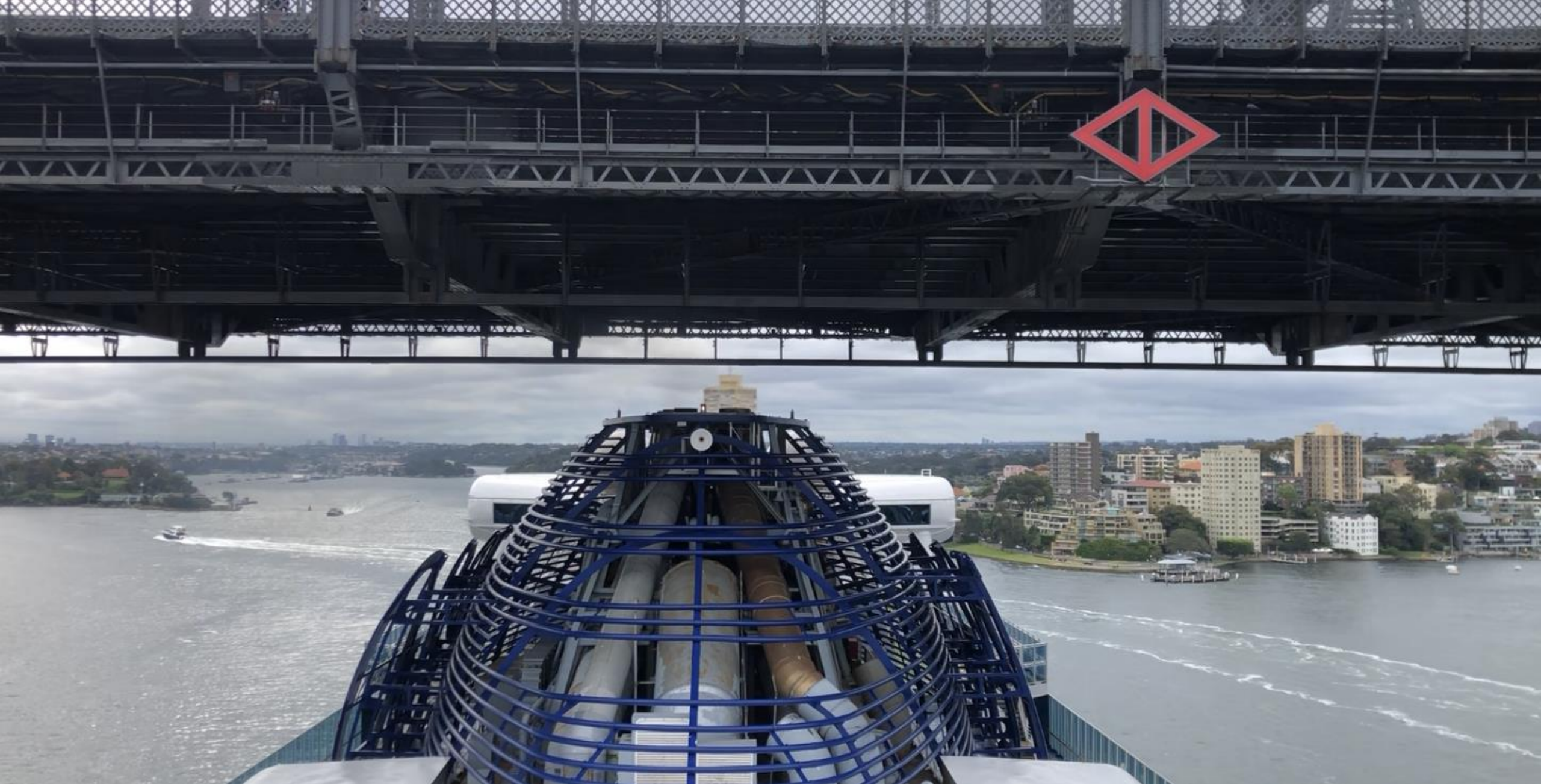
Doug Bird: P&O Cruises Australia  
Deputy Director, Maritime Operations





**Our largest ships  
are now operating  
in the South West  
Pacific year round**









**Port Vila Harbour now  
has a limitation on the  
size of vessel that can  
berth alongside**

# P&O can take YOU THERE!

There's a P&O cruise for everyone.  
We offer everything from amazing weekend trips to exotic  
once-in-a-lifetime experiences, and we take you there on  
a carefree cruise... without a worry in the world!

The South Pacific  
Islands remain the  
most popular  
cruise destinations  
from Australia &  
New Zealand





# Aspirational South Pacific Destinations

- Solomons - Russell Island
- New Georgia
- Fiji Islands
- Northern Vanuatu - Torres Isl
- Tongan Islands
- PNG - Louisades/Deboyne Isl
- Savaii ( Samoa)



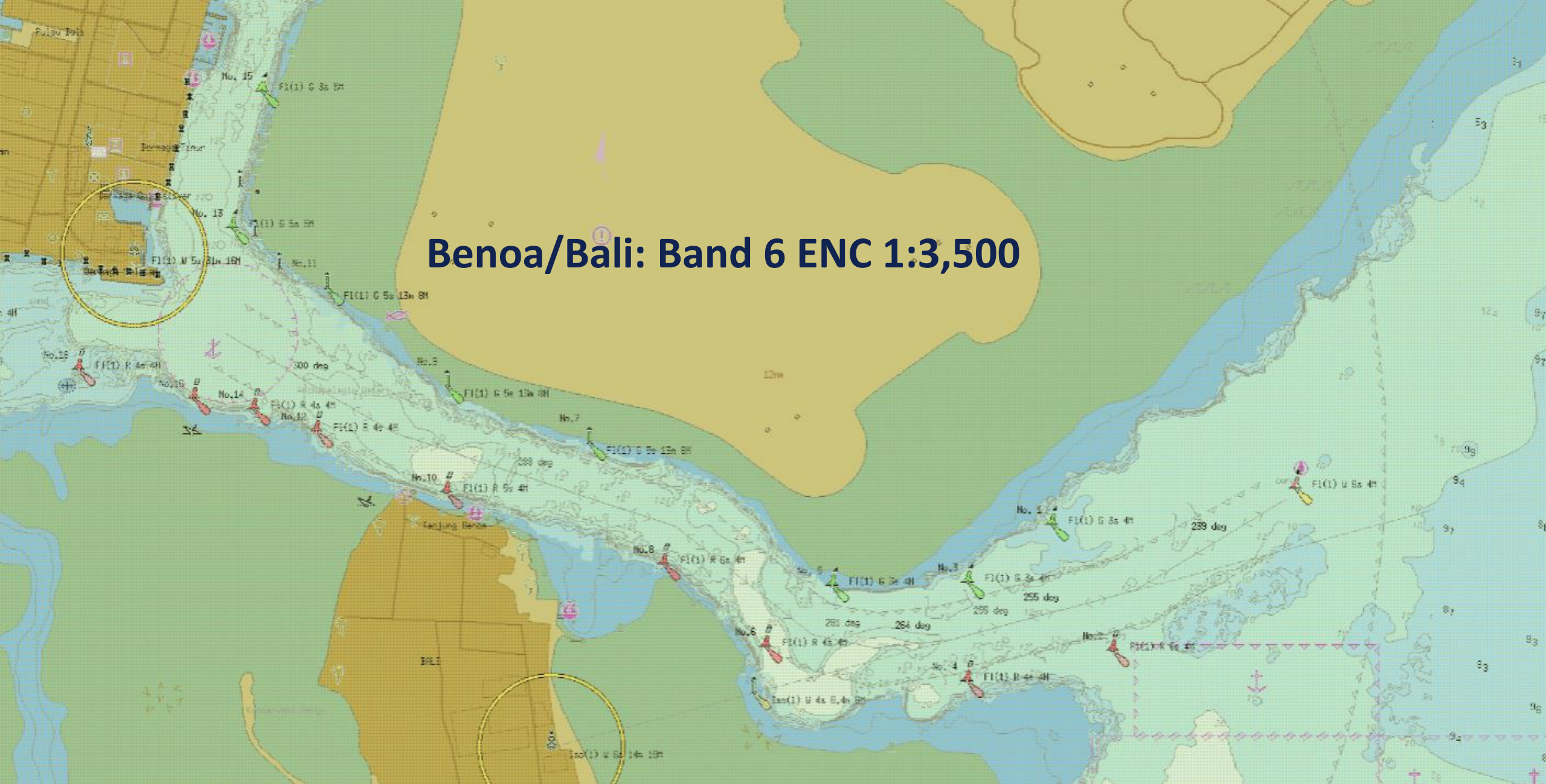


# Access to Spice Islands

- **Morotai (Around Sopi)**
- **Ternate/Tidore**
- **Raja Ampat - Wayag**
- **Lease Islands - Pulau Saparua**
- **Banda Islands - Run and/or Ai**
- **Kei Islands - Pasir Panjang**



## Benoa/Bali: Band 6 ENC 1:3,500





# What Do We Need From An Electronic Chart?

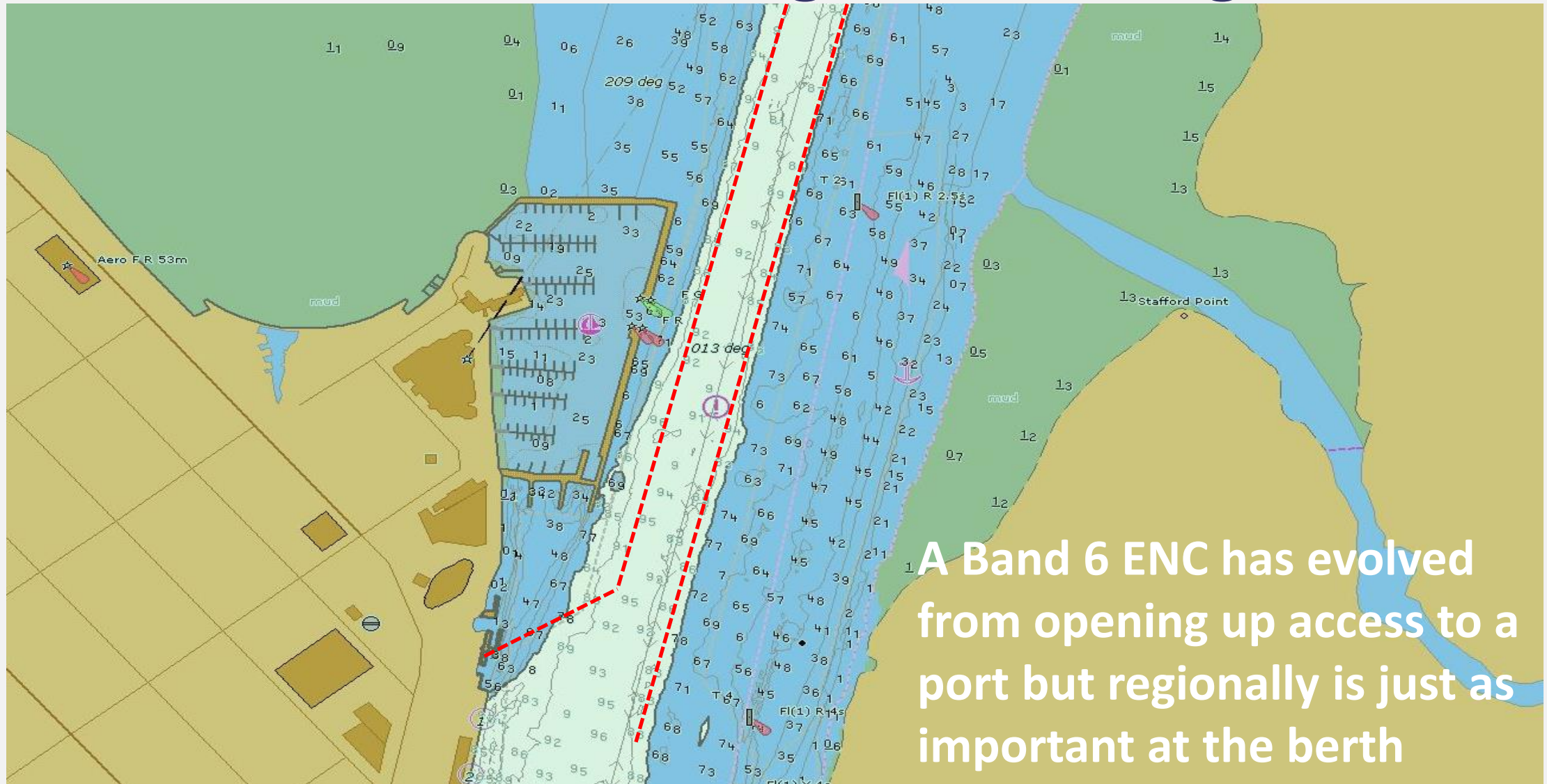
| Navigational Purpose | Name     | Scale Range             |
|----------------------|----------|-------------------------|
| 1                    | Overview | <1:1 499 999            |
| 2                    | General  | 1:350 000 – 1:1 499 999 |
| 3                    | Coastal  | 1:90 000 – 1:349 999    |
| 4                    | Approach | 1:22 000 – 1:89 999     |
| 5                    | Harbour  | 1:4 000 – 1:21 999      |
| 6                    | Berthing | > 1:4 000               |

| Selectable Range | Standard scale (rounded) |
|------------------|--------------------------|
| 200 NM           | 1:3 000 000              |
| 96 NM            | 1:1 500 000              |
| 48 NM            | 1:700 000                |
| 24NM             | 1:350 000                |
| 12 NM            | 1:180 000                |
| 6 NM             | 1:90 000                 |
| 3 NM             | 1:45 000                 |
| 1.5 NM           | 1:22 000                 |
| 0.75NM           | 1:12 000                 |
| 0.5 NM           | 1:8 000                  |
| 0.25 NM          | 1:4 000                  |

| PORT           | BAND USE | SCALE    |
|----------------|----------|----------|
| Napier         | 6        | 1:2,000  |
| Sydney OPT     | 6        | 1:2,000  |
| Cairns         | 6        | 1:2,500  |
| Benoa          | 6        | 1:3,500  |
| Port Vila      | 6        | 1:4,000  |
| Auckland       | 6        | 1:4,000  |
| Noumea         | 6        | 1:8,000  |
| Alotau         | 5        | 1:4,000  |
| Nuku 'Alofa    | 5        | 1:8,000  |
| Tauranga       | 5        | 1:8,000  |
| Suva           | 5        | 1:12,000 |
| Honiara        | 5        | 1:12,000 |
| Rabaul         | 5        | 1:12,000 |
| Brisbane River | 5        | 1:12,000 |
| Lifou          | 4        | 1:22,000 |
| Aneitum        | 4        | 1:22,000 |
| Nadi Entrance  | 4        | 1:45,000 |



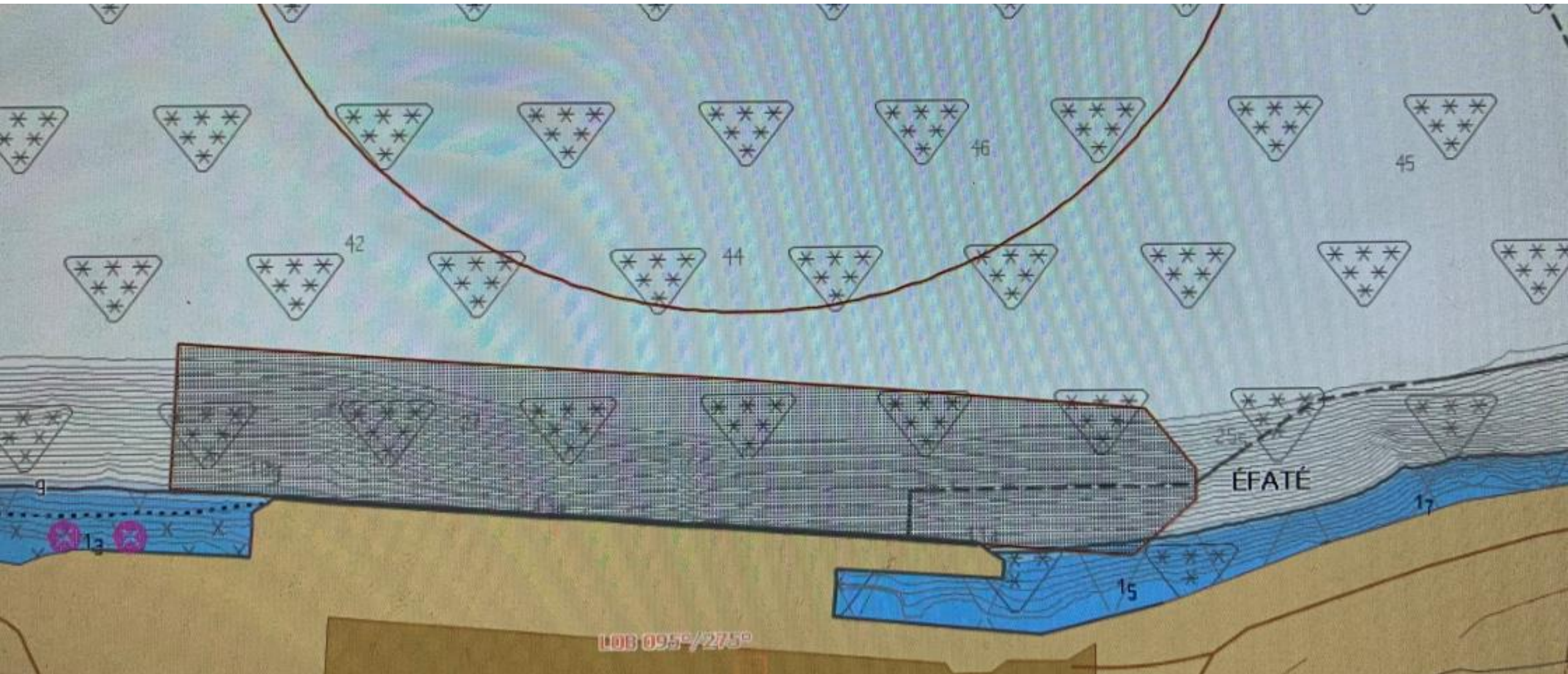
# Cairns Band 6 ENC Showing Actual Navigable Water



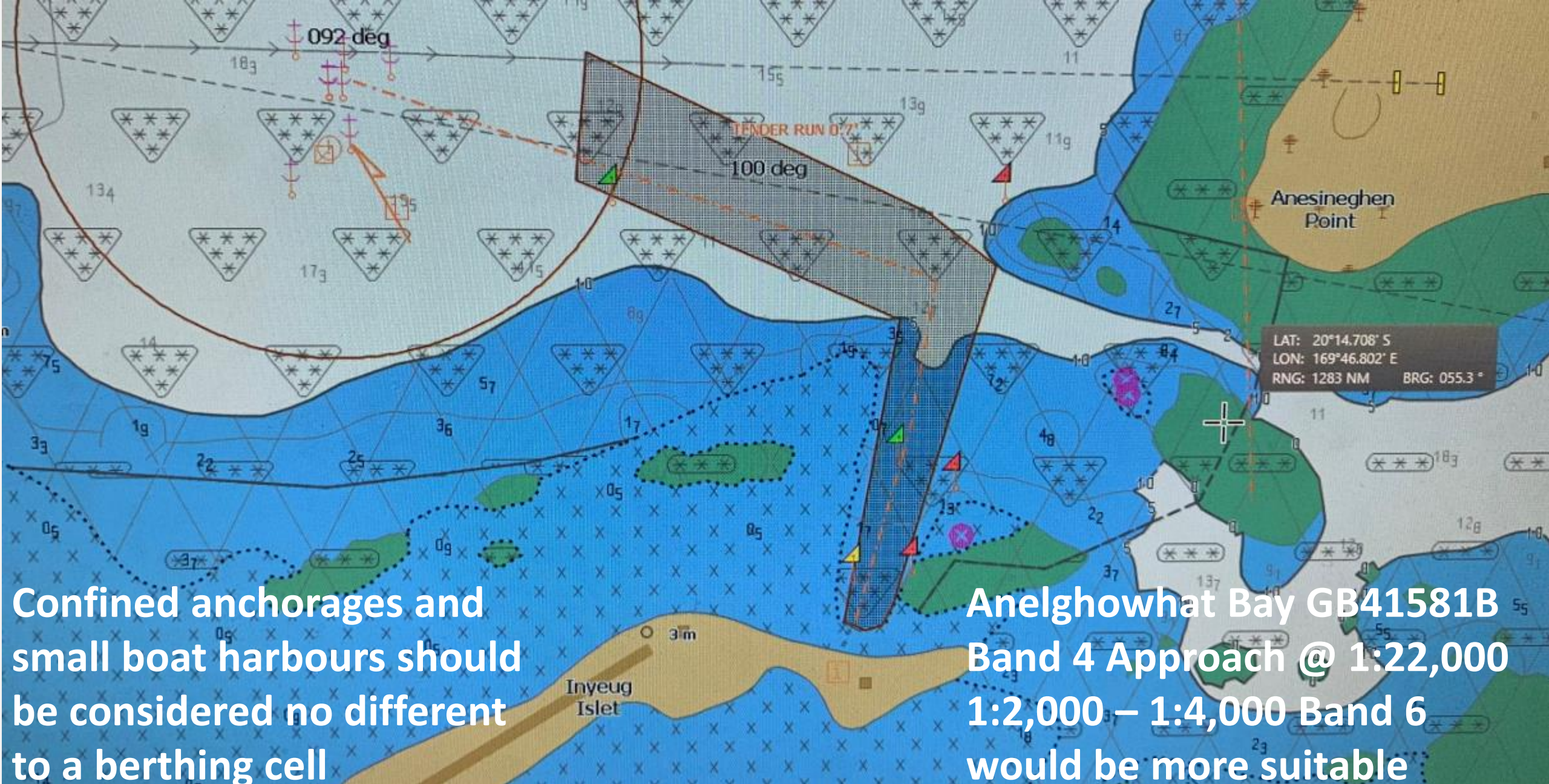


# PORT VILA Band 6 ENC 1:4,000

A 1:2,000 cell is crucial in the evaluation of larger vessels berthing.







Confined anchorages and small boat harbours should be considered no different to a berthing cell

Anelghowhat Bay GB41581B  
Band 4 Approach @ 1:22,000  
1:2,000 – 1:4,000 Band 6  
would be more suitable









Australian  
Marine Parks



# THANK YOU

