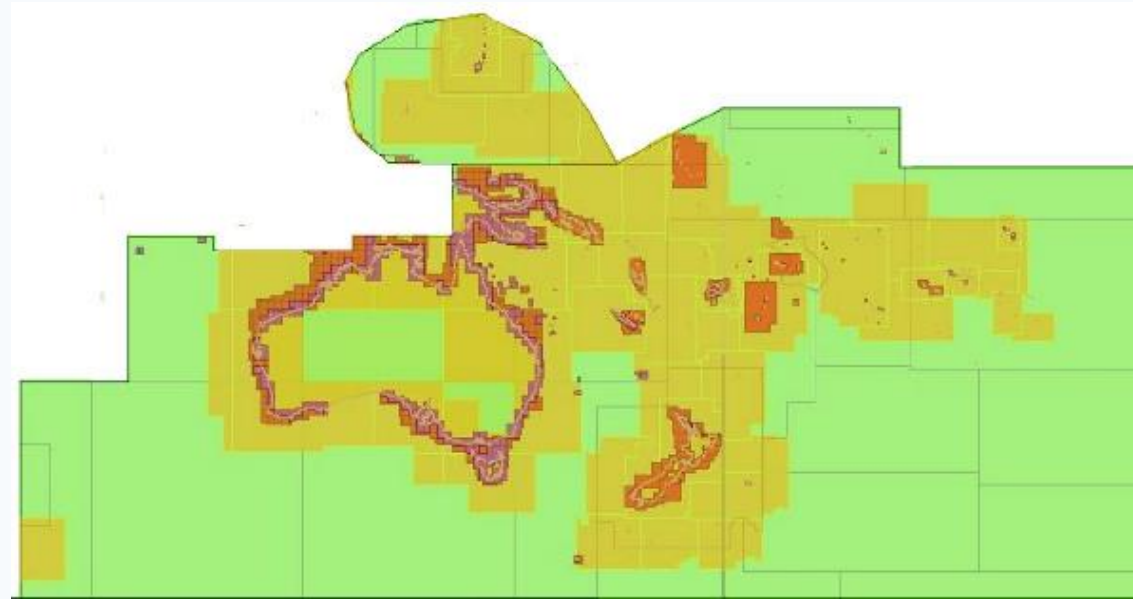


20th South West Pacific Hydrographic Commission Meeting

22nd – 24th Feb 2023, Wellington



International Charting Coordination Working Group (ICCWG) report to SWPHC 20
Robert Cario (AHO)



IHO

International
Hydrographic
Organization

South West Pacific Hydrographic Commission



BACKGROUND

- The SWPHC ICCWG was established in 2012 as a subsidiary of the SWPHC. It is made up of Producer Nations who publish Paper chart and ENC's in the SWPHC geographic area.
- Its main responsibility is for the coordination of Nautical Charting in the region, ensuring the Paper Chart INT series is comprehensive and current and the ENC coverage is appropriate. The main focus is on paper Charts at 1:500,000 and smaller and ENC Nav Purpose 1 and 2 coverage
- SWPHC is a fairly stable region in terms of INT Chart scheming. Current standards and procedures work for the countries involved.



IHO

International
Hydrographic
Organization



Current SWPHC ICCWG Members

- Australia (chair) - Robert Cario – robert.cario@defence.gov.au
- France - Nicolas David - nicolas.david@shom.fr
- New Zealand - Alison Cantrill - ACantrill@linz.govt.nz
- UK - Daniel Miners - Daniel.Miners@UKHO.gov.uk
- USA (NOAA) - Karl Wagner - karl.wagner@noaa.gov
- USA (NGA) - Sarah.E.Orantes - Sarah.E.Orantes@nga.mil
- Fiji – James Jason Morrell - jamesjasonmorrell@gmail.com

Allocation of Production Responsibilities, Coordination

Nations	Primary Charting Authority
<u>SWPHC Members:</u>	
Australia	Australia
Fiji	UK
France	France
New Zealand	New Zealand
Papua New Guinea	Australia
Samoa	New Zealand
Solomon Islands	Australia
Tonga	New Zealand
UK	UK
USA	USA
Vanuatu	UK
<u>SWPHC Associate Members:</u>	
Cook Islands	New Zealand
Indonesia	Indonesia
Kiribati	UK
Nauru	UK
Niue	New Zealand
Palau	USA

Nations	Primary Charting Authority
<u>SWPHC Observer:</u>	
New Caledonia	France
<u>Intergovernmental Observer Organization:</u>	
Secretariat of the Pacific Community (SPC)	
Fed States of Micronesia	USA
Marshall Islands	USA
American Samoa	USA
Pitcairn Islands	UK
Guam	USA
French Polynesia	France
Northern Mariana Islands	USA
Tokelau	New Zealand
Tuvalu	UK
Wallis and Futuna	France



IHO

International
Hydrographic
Organization



SWPHC19 Actions

No	Action	Responsible	Remarks
15	SWPHC to consider extending the role of the Charting Regional Coordinator for the implementation of the S-100 Implementation Roadmap	ICCWG	Email sent out 27 th Jan 2023 by SWPHC Chair calling for nominations for an SWPHC S-100 Coordinator.
16	SWPHC to coordinate the efforts on the implementation of S-100, promote the cooperation and exchange of experiences, and identify CB requirements..	ICCWG	The second SWPHC S-100 Workshop was conducted online on 12th October 2022.
19	SWPHC to consider role of regional charting coordinator to include S-1xx Products as RHC WEND Coordinator.	ICCWG	ICCWG ToR to be updated 2023 in include S100 products and S100 Implementation.

SWPHC S-100 Workshop

There were a number of presentations on S-100 Implementation updates and S-100 Value Proposition from Australia, New Zealand, France, USA and Singapore. Presentations and recording of the workshop can be found at

[Events & recordings | IHO](#)

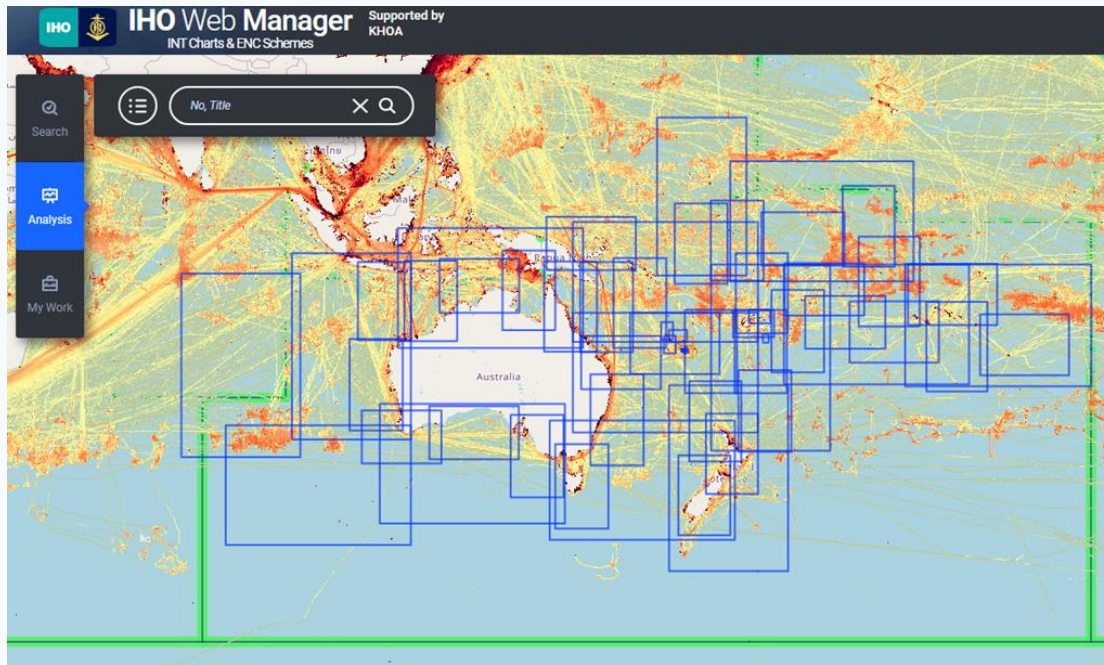


IHO

International
Hydrographic
Organization



Paper INT charts produced since the last conference



S-11 Part B, Region L updates

- Updates are managed through IHO Web Manager.
- See link [IHO Web Catalogue](#).
- There are currently 60 INT Charts in Region L

UKHO

- 7 New Editions of INT charts previously adopted from Australia (AHO).
- 3 New Editions of INT charts previously adopted from France (SHOM).
- No further new editions of GB INT charts produced since last conference

SHOM

FR Chart Number	Title	Published	ENC
7371 (INT654)	De Tahiti aux Îles Marquises	07 st March 2022	FR273710
7347 (INT656)	Des Îles Tuamotu aux Îles Australes	07 st March 2022	FR273470
7644 (INT6899)	Accès au Port de Nouméa	23 th November 2022	FR576440

AHO

Chart Number	Title	Published	ENC
4601 (INT 601)	New Zealand to South East Australia	16 th Sep 2022	AU160120 AU160150
4622 (INT 622)	Admiralty Islands to Solomon Islands	5 th Aug 2022	AU130120 AU130150



IHO

International
Hydrographic
Organization



Nav Purpose 1 & 2 ENC produced since the last conference

UKHO

New Cells Feb 2022 - Jan 2023	Area	Week No.
GB400991	Pitcairn – Pitcairn Island	9_22
GB40991C	Pitcairn – Oeno Island	20_22
GB40991D	Pitcairn – Ducie Island	52_22
GB300991	Pitcairn – Henderson Island	52_22

SHOM

New Cells	Area	Published
FR17246A	Polynésie Française partie nord	21/01/2022
FR17246B	Polynésie Française partie sud	21/01/2022



IHO

International
Hydrographic
Organization



Nav Purpose 1 & 2 ENC produced since the last conference

AHO

New Editions Feb 2022 - Feb 2023	Area	Published
AU130150	Australia - North East Approaches	30/06/2022
AU210120	Flinders Shoal to Dili	28/04/2022
AU210130	Arafura Sea	09/06/2022
AU210140	Ward Hunt Strait to Torres Strait	16/06/2022
AU210160	Solomon Islands - North East Approaches	05/05/2022
AU220130	Gulf of Carpentaria to Bathurst Island	09/06/2022
AU220140	Coral Sea (North West)	12/05/2022
AU220150	Coral Sea (North East)	09/06/2022
AU220160	South East Approaches	16/06/2022
AU230140	Coral Sea (South West)	05/05/2022
AU230150	Coral Sea (South East)	28/04/2022



IHO

International
Hydrographic
Organization



Paper INT charts & Nav Purpose ENC underway

SHOM

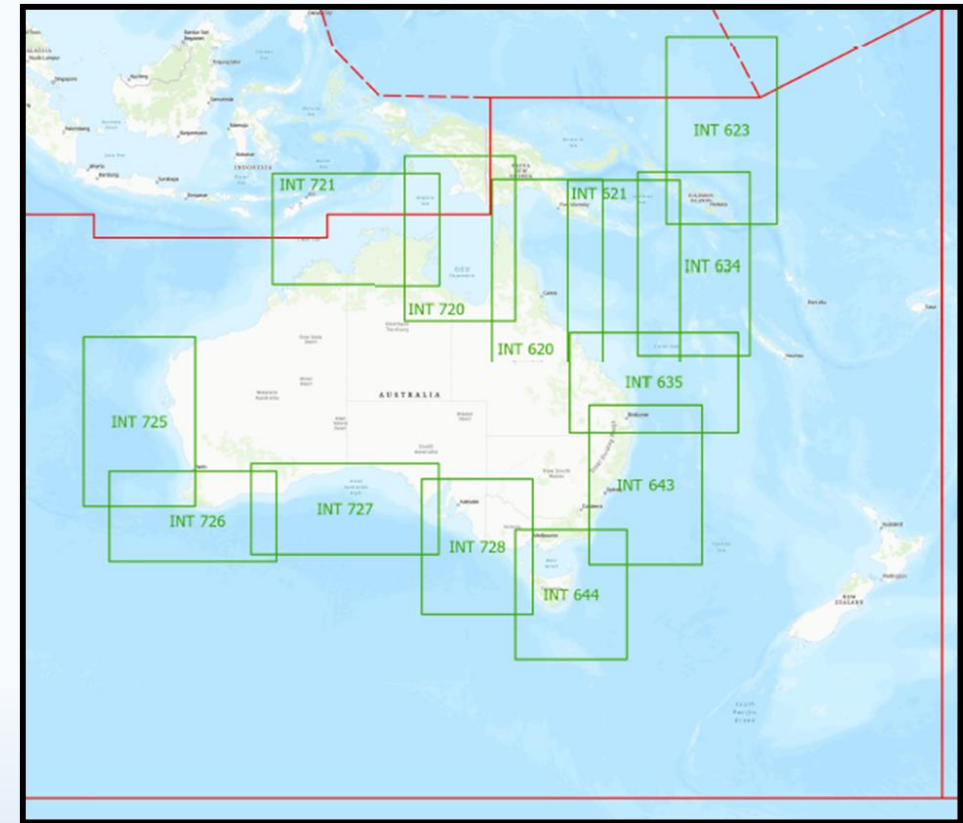
On French waters around New Caledonia, SHOM is producing a chain at scale 1:300000. FR6686 (INT6843) Nouvelle-Calédonie (partie Sud-Est) - Iles Loyauté and FR6768 (INT6844) - Nouvelle-Calédonie (partie Sud) - Ile des Pins - expected to be published in 2023 and 2024.

SHOM plan to produce :

- new FR272680 (based on paper chart FR7268) and reduce FR273210

AHO

As part of paper chart withdrawal strategy the AHO have withdrawn 13 of the 1.5 million series INT charts in September 2022.



IHO

International
Hydrographic
Organization



INT Charts update

NOAA

Paper INT Chart Update:

NOAA is undertaking a five-year program to end all raster and paper nautical chart production by 2025. Ultimately, production of all NOAA paper nautical charts (including paper INT charts), raster navigational charts (NOAA RNC®), and related products will cease.

The following large scale raster charts in the Southwest Pacific were cancelled on May 4, 2022:

RNC	Title	Scale
81063	Commonwealth of the North Mariana Islands Rota	1:25,000
81086	Plans in the Mariana Islands; Faraloon de Pajaros; Sarigan Island; Farallon de Medinilla; Ascuncion Island; Agrihan; Agrihan Anchorage; Alamagan Island; Guguan; Anatahan	1:72,962
81092	Commonwealth of the Northern Mariana Islands	1:26,420
83157	Palmyra Atoll; Approaches to Palmyra Atoll	1:10,000
83153	United States Possession Kingman Reef	1:25,000

For a list of latest editions and pending chart cancellations, visit: <https://www.charts.noaa.gov/MCD/Dole.shtml>



IHO

International
Hydrographic
Organization



Paper INT charts & Nav Purpose ENC underway

LINZ

- LINZ is currently reviewing its paper chart portfolio, specifically the smaller charts, with the intention to adopt a “smart rationalising” process on the 1.5M and 1.25M-scale paper charts.
- This process will remove duplicated paper charts which will reduce the maintenance required for these paper charts and reduce the number of paper charts overlaps in the small-scale portfolio.
- As part of this work, four INT charts at a scale of 1:1.5M have been identified as suitable for withdrawal without replacement.
- **The work to withdraw the four identified INT charts, NZ 21 (INT 641), NZ 22 (INT 639), NZ 25 (INT 648) and NZ 23 (INT 640) is scheduled for completion by end of 2023.**

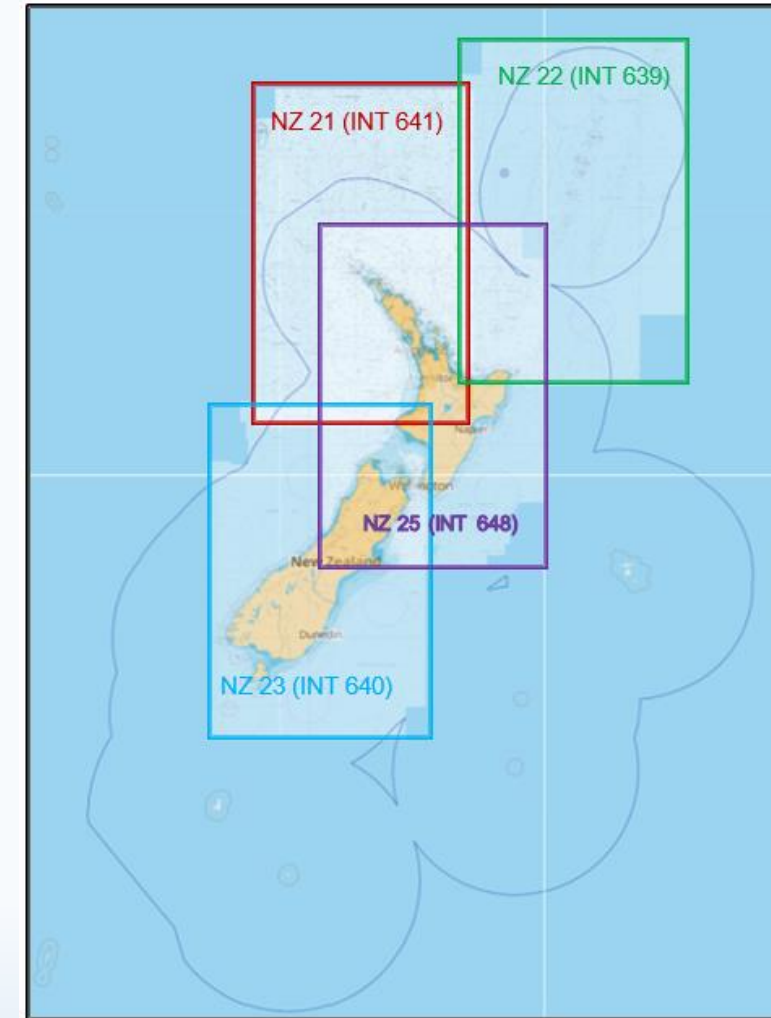


Figure 3:INT charts LINZ is planning on withdrawing in 2023



IHO

International
Hydrographic
Organization



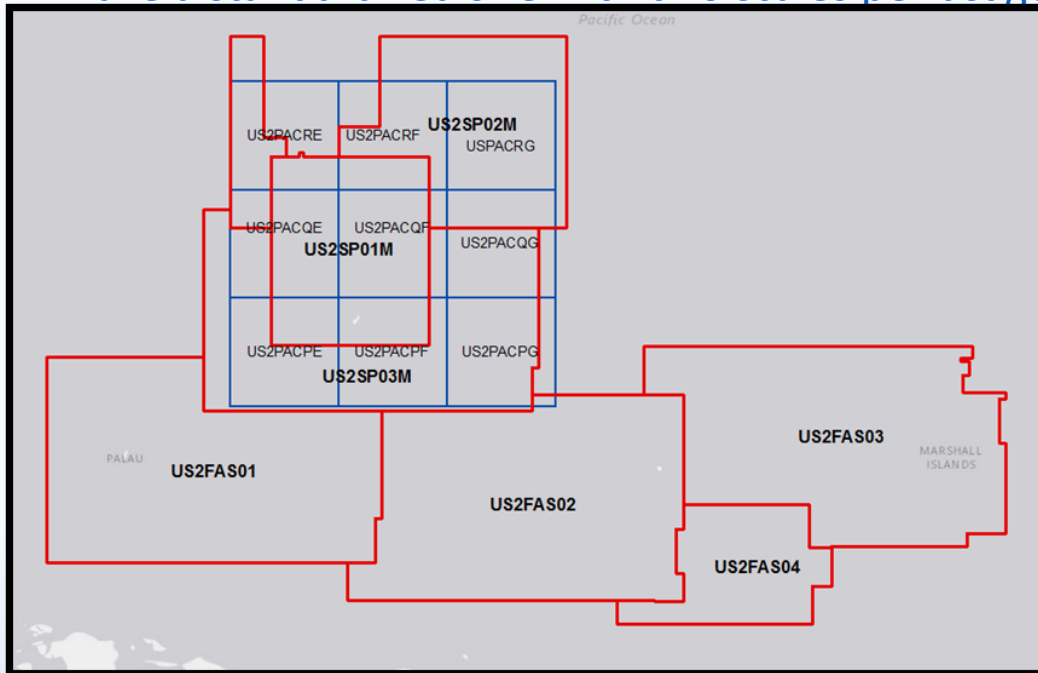
Gridded Scheme update

NOAA

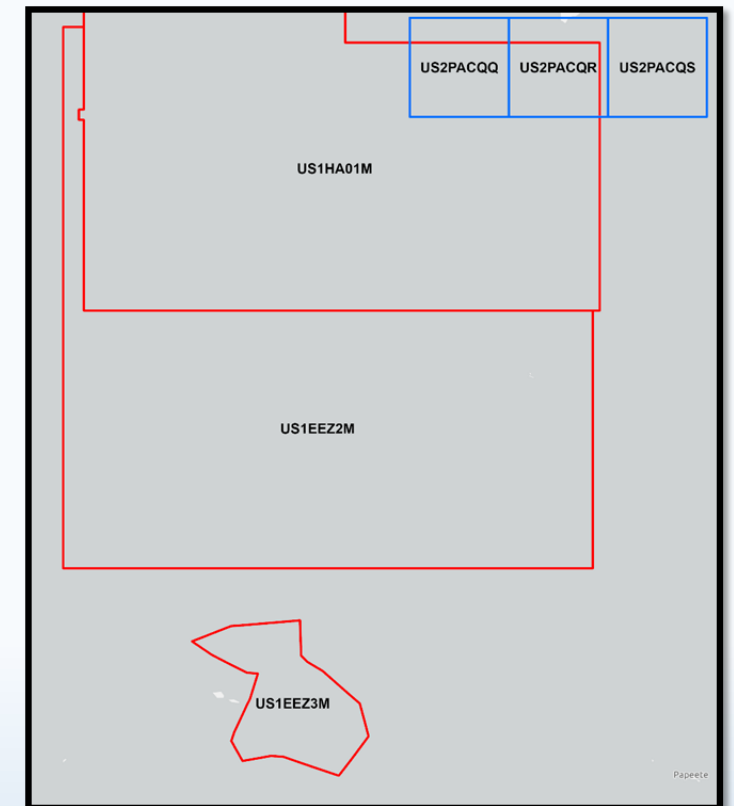
Nav Purpose 1 and 2 ENC Updates:

NOAA's Office of Coast Survey is in the process of rescheming its ENC suite. Current ENC boundaries are based on the paper nautical chart extents but will transition to a rectangular grid following latitude and longitude lines. Additionally, reschemed ENCs will have a standardized size with two scales per usage band.

Usage Band	Navigational Purpose	Cell Height (decimal degrees)	Cell Width (decimal degrees)	Reschemed NOAA ENC Scale
2	General	4.8°	4.8°	1: 1,280,000
				1: 640,000



US current ENCs (outlined in red) with planned Nav Purpose 2 reschemed ENCs (outlined in blue)



IHO

International
Hydrographic
Organization

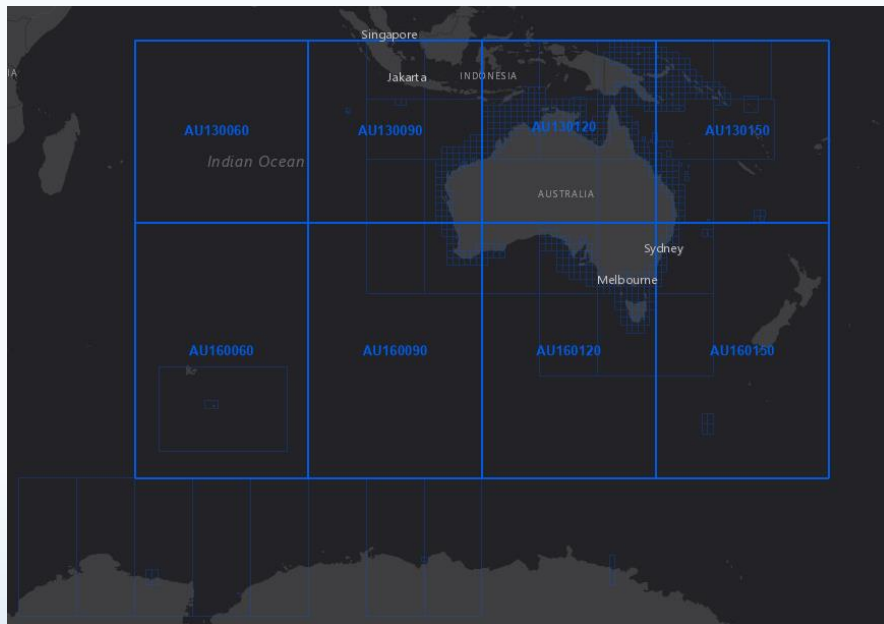


Gridded Scheme update

AHO

The current AHO ENC scheme is gridded scheme.

Navigation Purpose Code	Usage	Area (as produced by AHO)
1	Overview	30° x 30°
2	General	10° x 10°
3	Coastal	1° x 1°
4	Approach	1° x 1°
5	Harbour	Customised to cover port and pilotage areas.
6	Berthing	Customised to cover channels and manoeuvring areas



IHO

International
Hydrographic
Organization

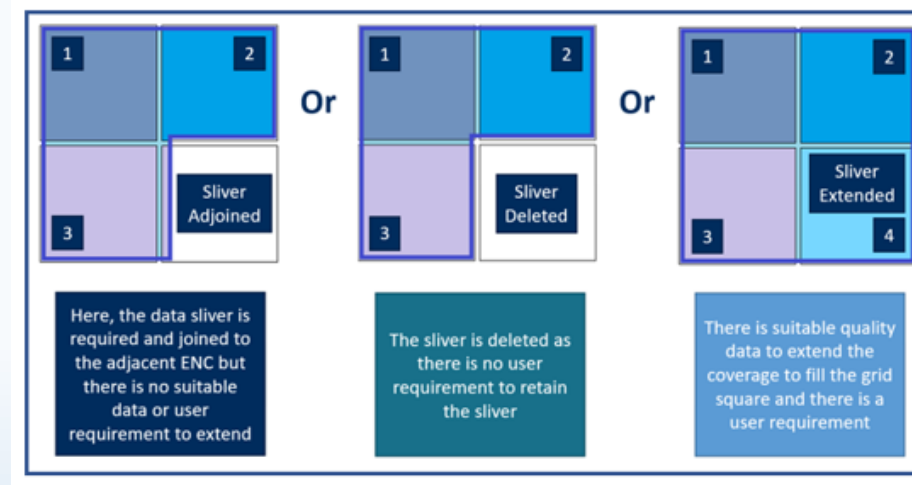
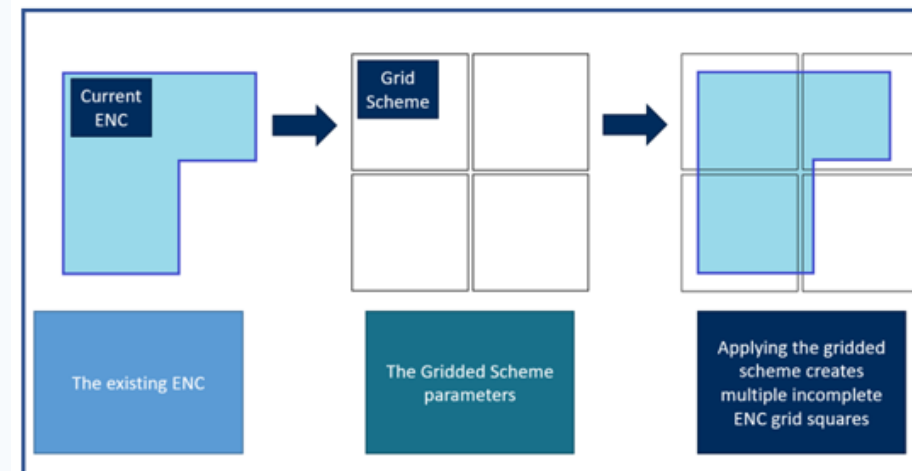


Gridded Scheme update

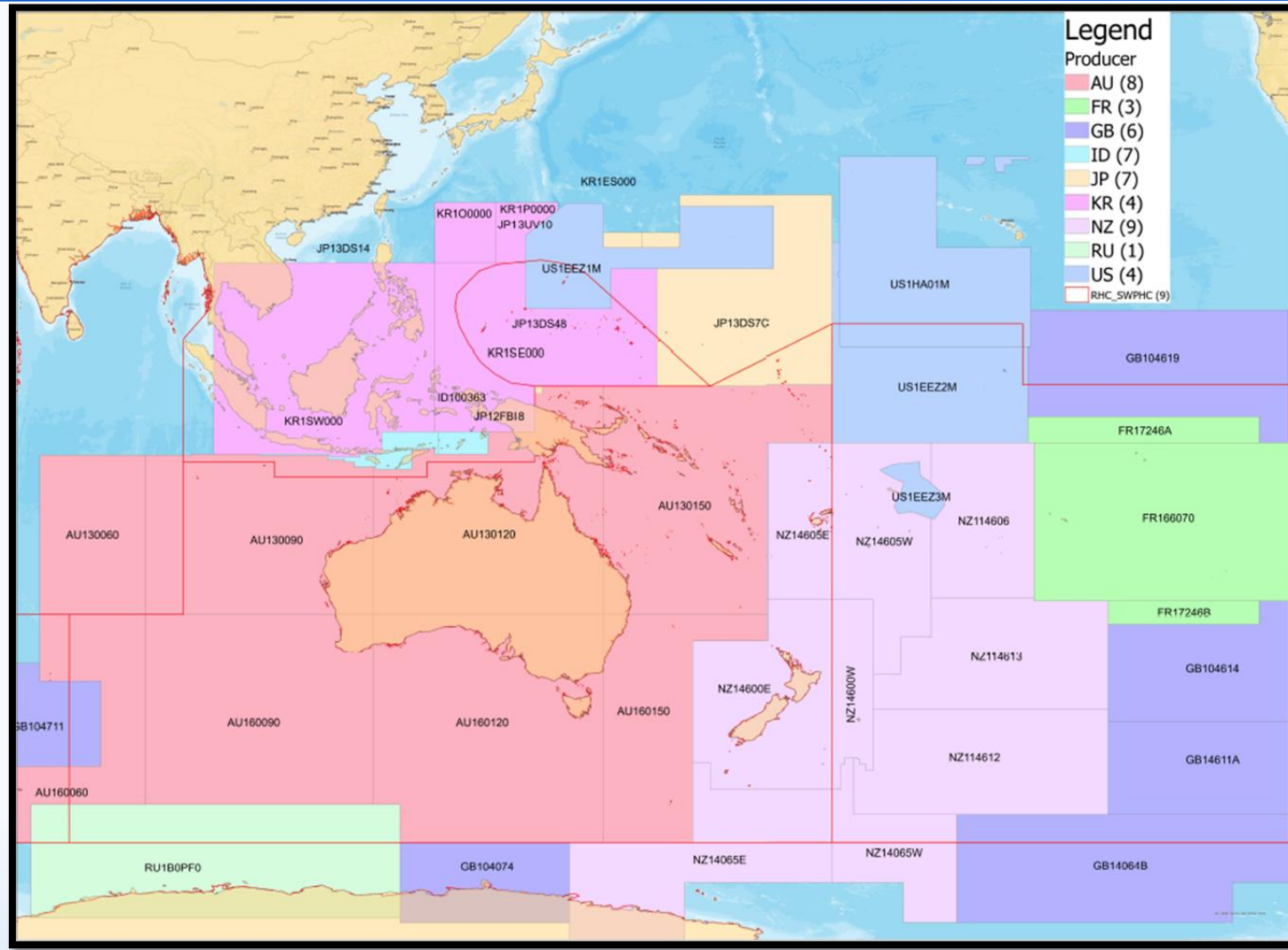
UKHO

- UKHO is in the process of rescheming their ENC portfolio. Started around the UK, but plan to apply their “model grid” to GB ENCs in other regions in due course.
- Examples to the right show how the scheme may be “fine tuned” to avoid creating multiple incomplete ENC grid squares.

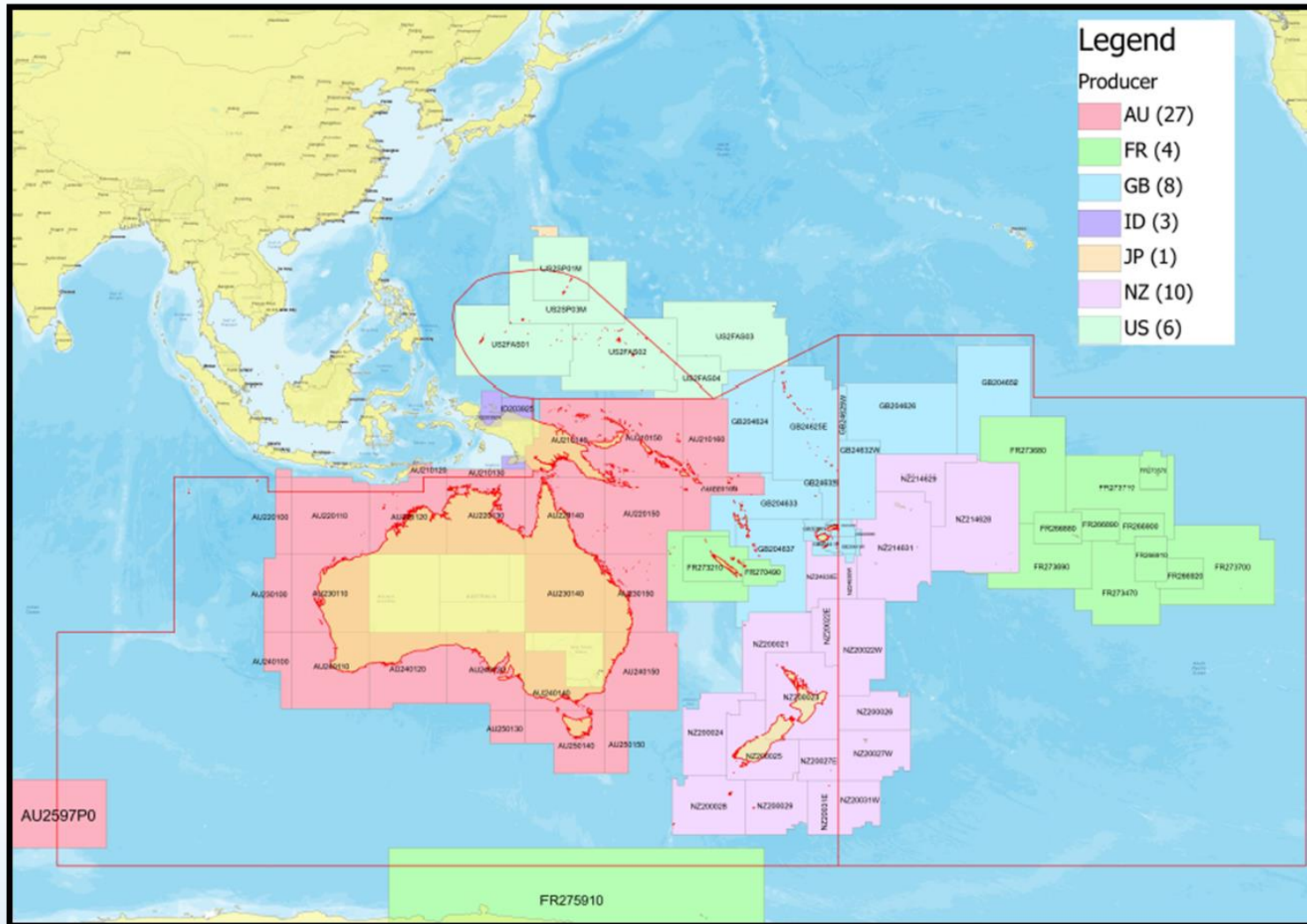
Navigation Purpose Code	Usage	Area
1	Overview	20° x 20°
2	General	4° x 4°
3	Coastal	0.8° x 0.8°
4	Approach	0.2° x 0.2°
5	Harbour	0.1° x 0.1°
6	Berthing	0.05° x 0.05°



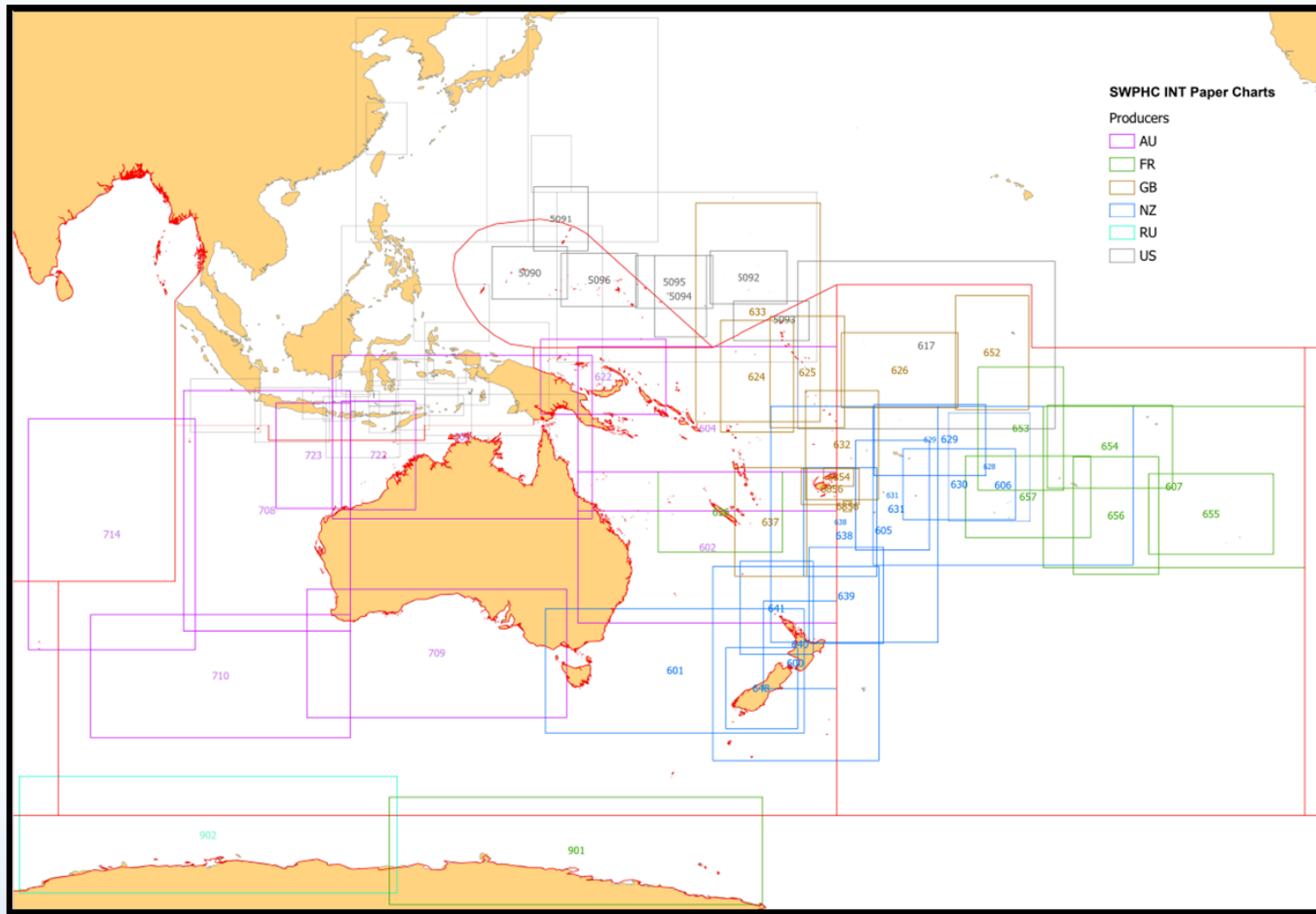
Current ENC coverage - Nav Purpose 1 - Overview



Current ENC coverage - Nav Purpose 2 - General



Current INT Charts in SWPHC



IHO

International
Hydrographic
Organization



ENC Overlaps & WEND principles

The following is an extract from a report received from IC-ENC regarding overlaps of ENC in the SWP. Further details can be provided by contacting the ICCWG Chair
Several low severity ENC overlaps exist - PCAs are working to resolve.

IC-ENC REGIONAL HYDROGRAPHIC COMMISSION OVERLAP REPORT - SOUTH WEST PACIFIC RHC - FEBRUARY 2023														
ID	STATUS	RENC Membership	RHC	ENC 1	ENC 2	Usage Band	ENC 1 Scale	ENC 2 Scale	ENC 1 Edn	ENC 2 Edn	Overlap extent (Kmxkm) (m/square NM)	Impact Assessment	Justification	Action requested
126	LIVE	IC-ENC	SWPHC/SAIHC	RU1B0PF0	AU160060	1	3000000	3500000	1	4	840Km x 558Km 135600 sq. NM	LOW	Overlap is located in the Antarctica, it charts very deep waters. There is a 119m shoal depth which is captured on AU160000 which is not captured on RU1B0PF0. Little traffic as expected.	HOs to discuss and resolve overlaps
127	LIVE	IC-ENC	SWPHC/HCA	RU1B0PF0	AU160090	1	3000000	3500000	1	4	560Km x 1700Km 273008 sq. NM	LOW	Overlap is located in the Antarctica, it charts very deep waters. Little traffic as expected.	HOs to discuss and resolve overlaps
128	LIVE	IC-ENC	SWPHC/HCA	RU1B0PF0	AU160120	1	3000000	3500000	1	5	560Km x 195Km 31605 sq. NM	LOW	Overlap is located in the Antarctica, it charts very deep waters. Little traffic as expected.	HOs to discuss and resolve overlaps
193	LIVE	IC-ENC - NON RENC	SWPHC	US1EEZ1M	JP13DS48	1	3000000	3000000	7	21	410Km x 4Km 20Km x 17Km	UNABLE	IC-ENC does not have access NON RENC ENC to conduct assessment	HOs to discuss and resolve overlaps

Adherence to WEND principles

ENCs are distributed worldwide via the following mechanisms:

Producer nation

France
Australia
New Zealand
UK
US

Mechanism

PRIMAR RENC
IC-ENC RENC
IC-ENC RENC
IC-ENC RENC
IC-ENC RENC



IHO

International
Hydrographic
Organization



Recommendations for discussion at SWPHC 20

1. Members of the SWPHC note the report



IHO

International
Hydrographic
Organization

