



20th Meeting of the South West Pacific Hydrographic Commission

National Report by

FIJI ISLANDS



IHO

International
Hydrographic
Organization

South West Pacific Hydrographic Commission



Scope

- Service Objectives
- FHS Structure
- Current Capability
- Status of Survey and Nautical Charting
- Charting
- Capacity Building
- Way Forward
- Conclusion



IHO

International
Hydrographic
Organization



Service Objectives

Vision

- To be the National Authority for the provision of accurate Oceanographic and Hydrographic Information and Services.

Mission

- To provide accurate oceanographic and hydrographic information efficiently in order to meet national defense and civil requirements.
- To satisfy national and international obligations for safe navigation and the preservation of the marine environment.

Aim

- To provide Hydrographic services for navigable waters within Fiji's National Area of Responsibility.
- To maintain and improve Hydrographic capability and flexibility to meet national requirements.
- To provide customers with accurate, readily available oceanographic and hydrographic information and services.

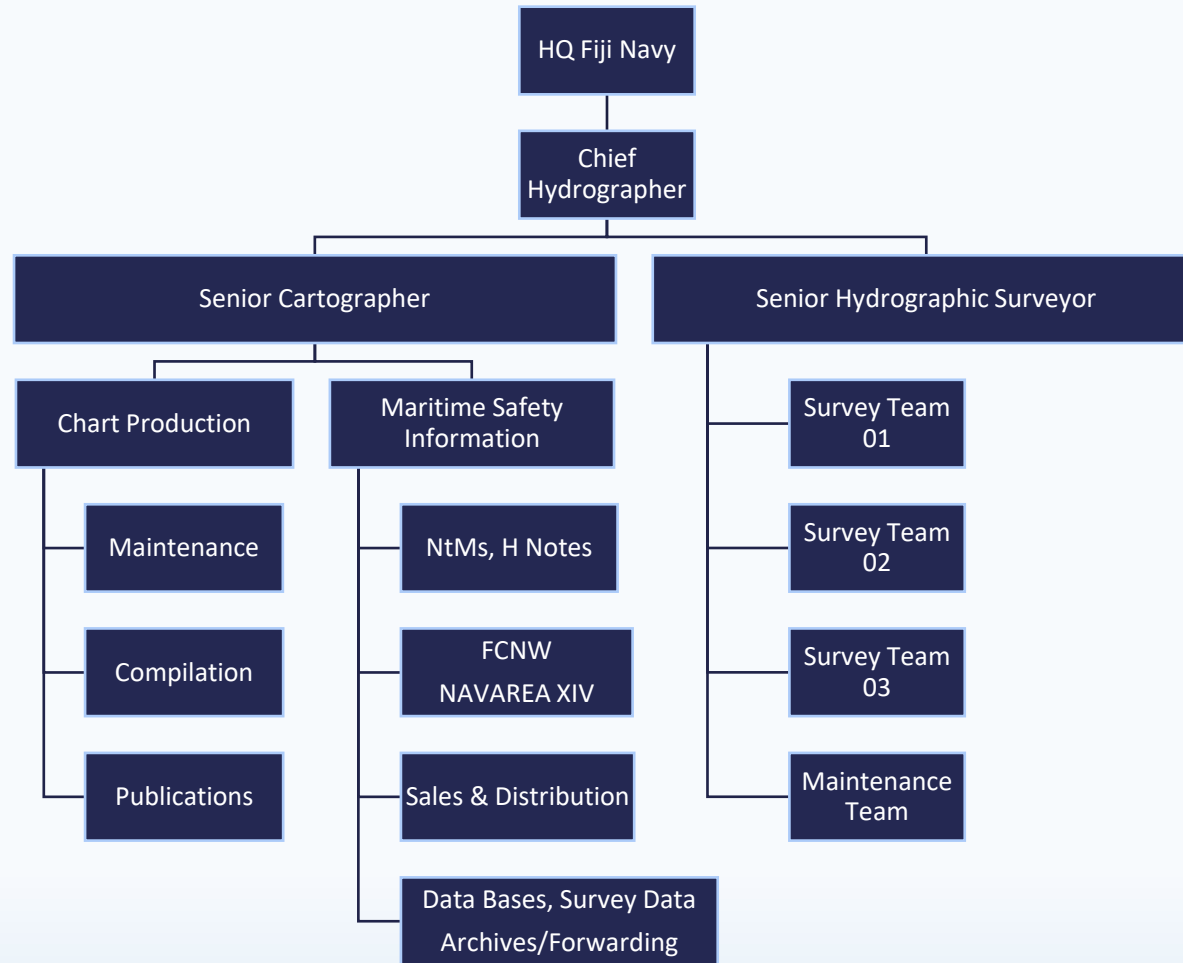


IHO

International
Hydrographic
Organization



Current FHS Structure



IHO

International
Hydrographic
Organization



Capability

- **RFNS Volasiga**

- **General Specs**

- Length Overall - 29.6m
- Designed Draft - 2.8m
- Full Loaded displacement - 72 ton
- Fuel capacity – 16,570L

- **Hydrographic Capability**

- Kongsberg Multibeam
- Towed Side Scan
- Acoustic Doppler Current Meter



IHO

International
Hydrographic
Organization



Capability

- **SMB Ika Vuka**

- **General Specs**

- Length Overall - 9m
- Designed Draft - 0.5m
- Full Loaded displacement - 3.5 ton
- Fuel capacity – 380L

- **Hydrographic Capability**

- R2 Sonic Multibeam
- Echosound Single Beam



IHO

International
Hydrographic
Organization



Capability

- **RFNS Kacau**

- **General Specs**

- Length Overall - 45m
- Designed Draft - 2.4m
- Full Loaded displacement - 302 ton
- Fuel capacity – 26,630L

- **Hydrographic Capability**

- Norbit Multibeam
- Towed Side Scan / Sub Bottom Profiler



IHO

International
Hydrographic
Organization



Capability

- **CARTOGRAPHY DEPARTMENT**

- **Equipment**

- 07 x Workstations
- 01 x 44inch Plotter
- 01 x 42 inch Scanner

- **Software**

- Caris Hips and Sips
- Caris Base Editor, Paper Chart Composer, S57 Composer

Products and Services

Navigational Charts

Special Charts (showing 200 Mile EEZ and Maritime Baselines)

Fiji Nautical Almanac (published annually)

Fiji Chart Catalogue

Fiji Notices to Mariners (periodical)

Fiji Coastal Navigational Warning (MSAF)

Nautical information (at the request of customer)

Historical Archive research



IHO

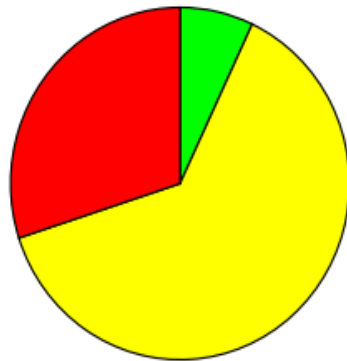
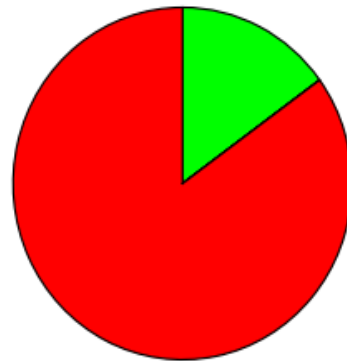
International
Hydrographic
Organization



Status of Hydrographic Survey

Fiji (L)

Hydrographic surveying / Levés hydrographiques / Levantamientos hidrográficos

Survey coverage Couverture hydrographique Cobertura hidrográfica		Depth < 200m Profondeur < 200m Profundidad < 200m			Depth > 200m Profondeur > 200m Profundidad > 200m		
<div><div><div></div><div>%</div></div><div>Adequately surveyed Correctement hydrographié Adecuadamente levantado</div></div> <div><div><div></div><div>%</div></div><div>Re-survey required Nécessitant de nouveaux levés Requiere nuevo levantamiento</div></div> <div><div><div></div><div>%</div></div><div>Never systematically surveyed Jamais hydrographié systématiquement Nunca levantado sistemáticamente</div></div>		7	63	30	15	0	85
							
	Notes Notes Notas	1. Depths fall away quickly beyond the edge of the fringing reefs of the steep to Atolls and Islands. 2. Priority is for modern surveys of the minor ports and anchorages, which are only covered by lead-line surveys.					



IHO

International
Hydrographic
Organization



Status of Nautical Charting

Fiji (L)

Nautical charting / Cartographie marine / Cartografía náutica

Coverage of charts published Couverture des cartes publiées Cobertura de cartas publicadas			Offshore passage Navigation au large Pasaje offshore			Landfall and Coastal passage Atterrissage et navigation côtière Recalada y Pasaje costero			Approaches and Ports Approches et ports Aproches y puertos			
<div><div>%</div><div>Covered by INT or other paper charts meeting S-4 Couvert par des cartes papier INT ou autres conformes S-4 Cubiertas por cartas de papel INT o otras cumpliendo S-4</div></div>	100			100	100	100	100	100	100	100	100	
	<div><div>%</div><div>Covered by RNC meeting S-61 Couvert par des RNC conformes S-61 Cubiertas por RNC cumpliendo S-61</div></div>			<div><div></div></div>	<div><div></div></div>	<div><div></div></div>	<div><div></div></div>	<div><div></div></div>	<div><div></div></div>	<div><div></div></div>	<div><div></div></div>	
	<div><div>%</div><div>Covered by ENC meeting S-57 Couvert par des ENC conformes S-57 Cubiertas por ENC cumpliendo S-57</div></div>			INT	RNC	ENC	INT	RNC	ENC	INT	RNC	ENC
Paper charts showing depth in meters Cartes papier avec les profondeurs en mètres Cartas de papel con profundidades en metros	100 %	Paper charts referenced to a satellite datum Cartes papier rapportées à un système géodésique satellitaire Cartas de papel referidas a un datum satelital				100 %	Data source Source des données Origen de los datos					
Notes Notes Notas	1. Data provided by UK. 2. All UK coverage now metric and WGS84											

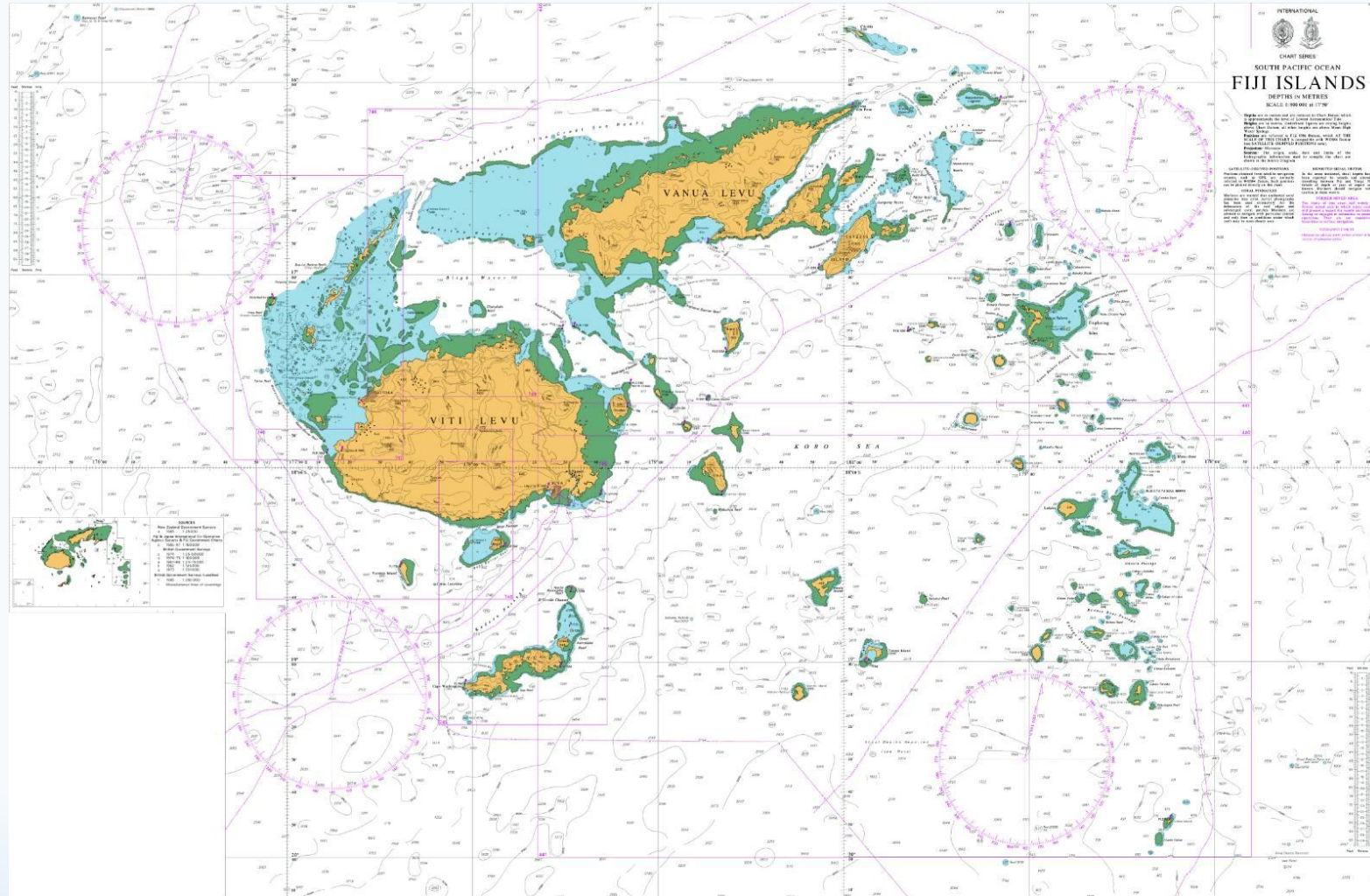


IHO

International
Hydrographic
Organization



Charting – BA Charts

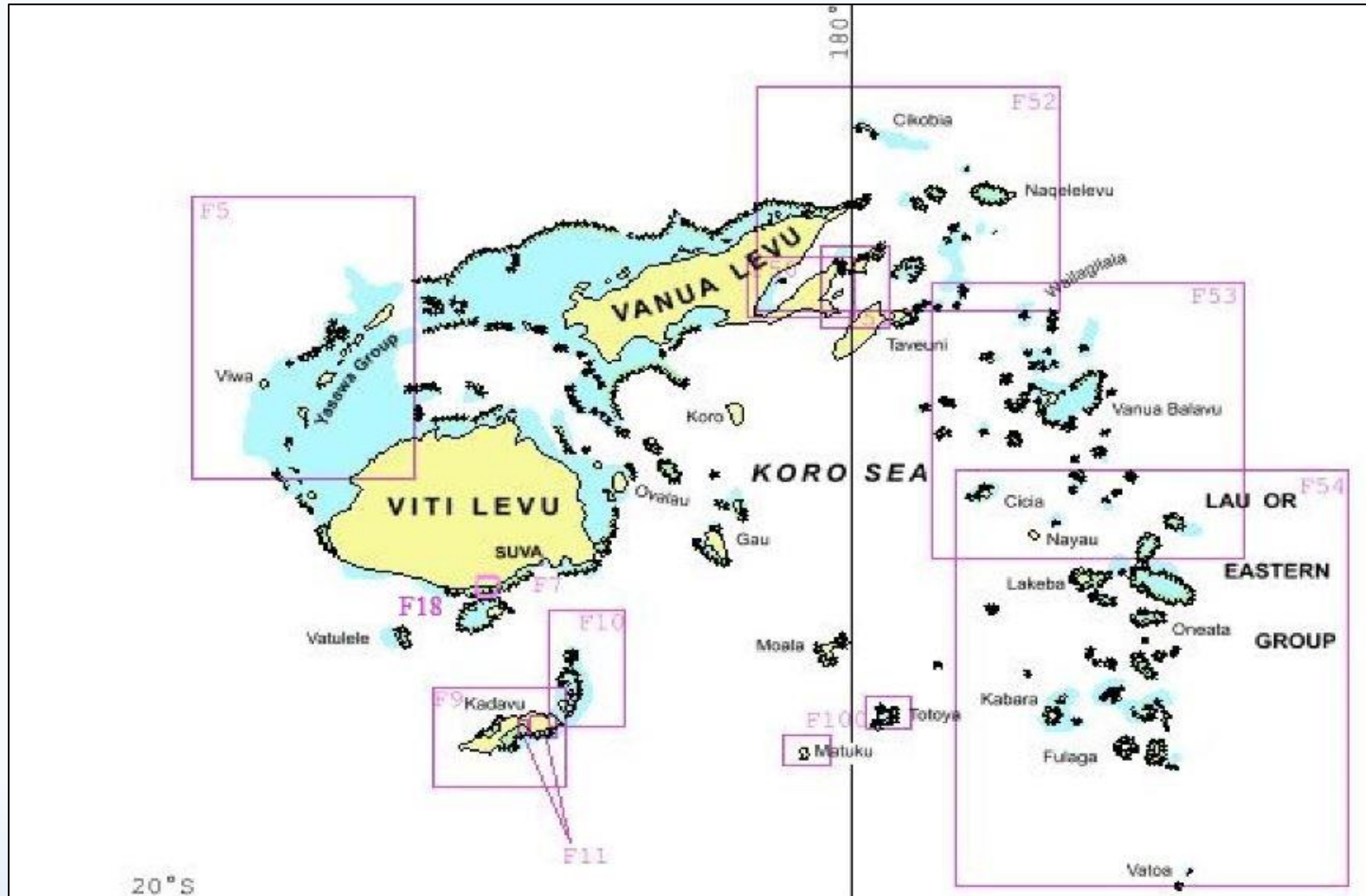


IHO

International
Hydrographic
Organization



Charting – F Series



IHO

International
Hydrographic
Organization



Charting – Future



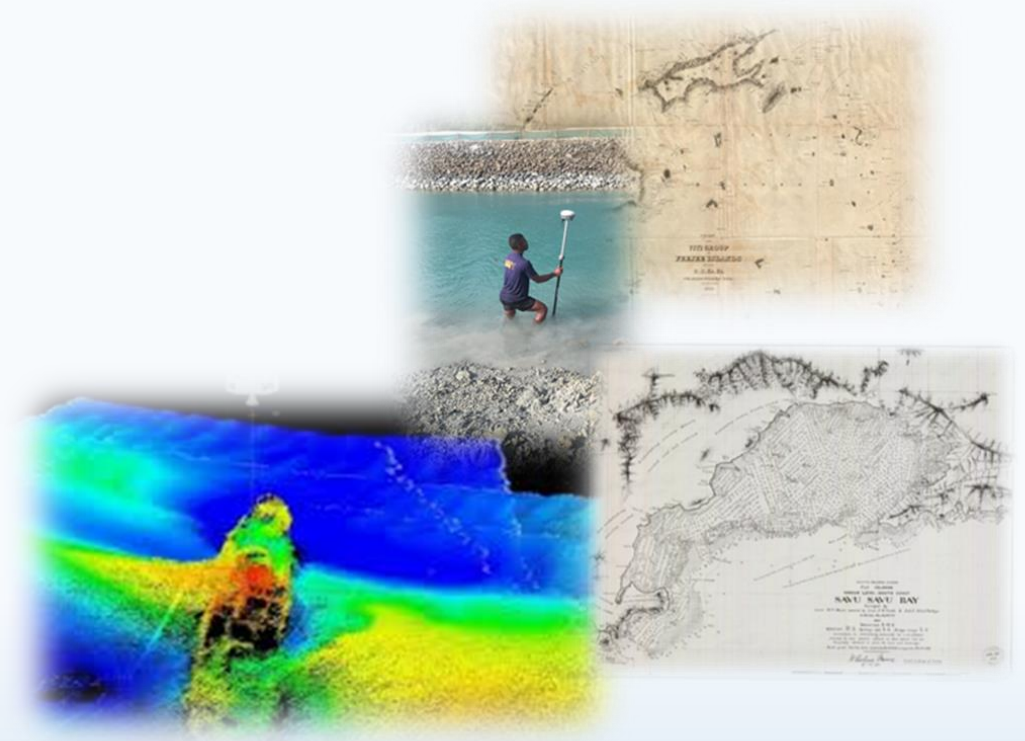
IHO

International
Hydrographic
Organization



Capacity Building

- Courses (2022-23)
 - Cat A Survey - UK
 - Cat B Survey – UK/Aus
 - Cat B Carto – UK
 - Basic Survey Recorder – Aus
- Capacity Building Requirements
 - Cat B & A (Survey & Carto)
 - Survey & Carto Attachment
 - MSI and MSDI Training opportunities



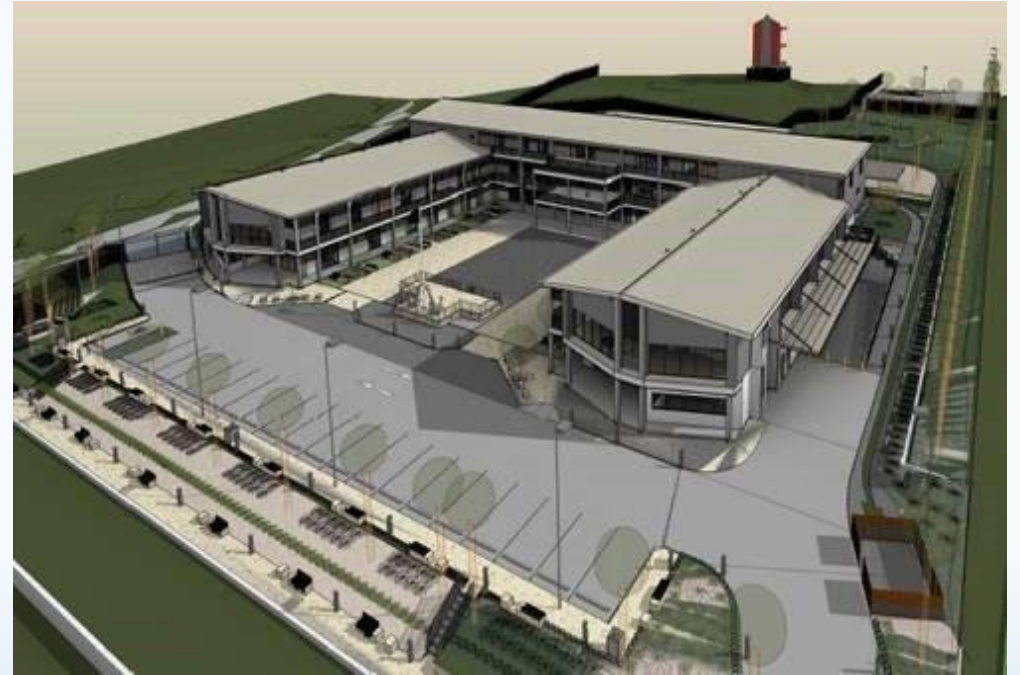
IHO

International
Hydrographic
Organization



Way Forward

- Hydrographic Strategic Plan
- Formation of NHCC
- Hydro scheme
- Restructure of FHO
 - Hydrography
 - Cartography
 - Oceanography
 - Data Management
- FHO move to Maritime Essential Services Centre
- Review of CS/PCA relationship
- Collaborative efforts with regional partners



Conclusion



IHO

International
Hydrographic
Organization

