

# Tonga National Report

(SWPHC20 - Wellington)

# CONTENT

- Hydrography in Tonga
- National Hydrographic Coordination Committee Amendment
- 2022 & 2023 MSI Report
- Achievement
- General Overview of Chart Change
- General Overview of Tongan Charts
- Volcanic Eruption
- Challenges
- Good News

# Hydrography in Tonga

- *Primary Charting Authority – LINZ*
- *Tonga National Hydrography Coordination Committee*
- *Hydrographic Unit - His Majesty Armed Force (HMAF)*
- *MSI Coordinator & NavAids - Marine and Port Division (MPD) & Ports Authority Tonga (PAT)*



# Member of the TNHCC (Cabinet decision No. 1049 – 12<sup>th</sup> December 2014)

- Ministry of Infrastructure
- His Majesty Armed Force
- Tonga Police Force
- Fisheries & Agriculture Department
- Environment Department
- Tonga Meteorological Office
- Attorney General's Office
- Ministry of Tourism
- Ministry of Land and Survey

# Member of the TNHCC (Other Stakeholder Companies)

- Ports Authority Tonga
- Shipping Companies (FISA, 'Eua Transport, Tofaa Ramsey)
- National Fisheries Council
- ~~Recreational Boating Association~~
- Tonga Maritime Polytechnic Institute (TMPI)

# Maritime Safety Information (MSI) Report



MSI No.	Source	Activity
<b>2023</b>		
TONNAVWARN 01/22	Port Authority Tonga (PAT)	Re-installing Malinoa light
<b>2022</b>		
TONNAVWARN 08/22	Tonga Geological Service (TGS)	Volcanic Activity
TONNAVWARN 07/22	Sea-Kit	Survey Operation
TONNAVWARN 06/22	Sea-Kit	Survey Operation
TONNAVWARN 05/22	Marine and Port Division (MPD) & Port Authority Tonga (PAT)	NavAids affected by the Tsunami
TONNAVWARN 04/22	Sea-Kit	Survey Operation
TONNAVWARN 03/22	His Majesty Armed Force (HMAF)	Firing Practice
TONNAVWARN 02/22	Marine and Port Division (MPD) & Port Authority Tonga (PAT)	Update of warning on unreliable NavAid's & water depth on harbor after the tsunami
TONNAVWARN 01/22	Marine and Port Division (MPD) & Port Authority Tonga (PAT)	Warning on unreliable NavAid's & water depth on harbor after the tsunami



# Achievement (Hydrographic Survey Programme)

- Pacific Regional Navigation Initiative (PRNI) Programme
- Commonwealth Maritime Economies (CME) Programme



# Achievement

## Pacific Regional Navigation Initiative (PRNI) Programme

- *Funded by New Zealand* Aid programme & delivered through Land & Information New Zealand (LINZ)
- A 5 year program designed to increase the *navigational safety* of mariners operating in & around the pristine waters of the South West Pacific





# Achievement

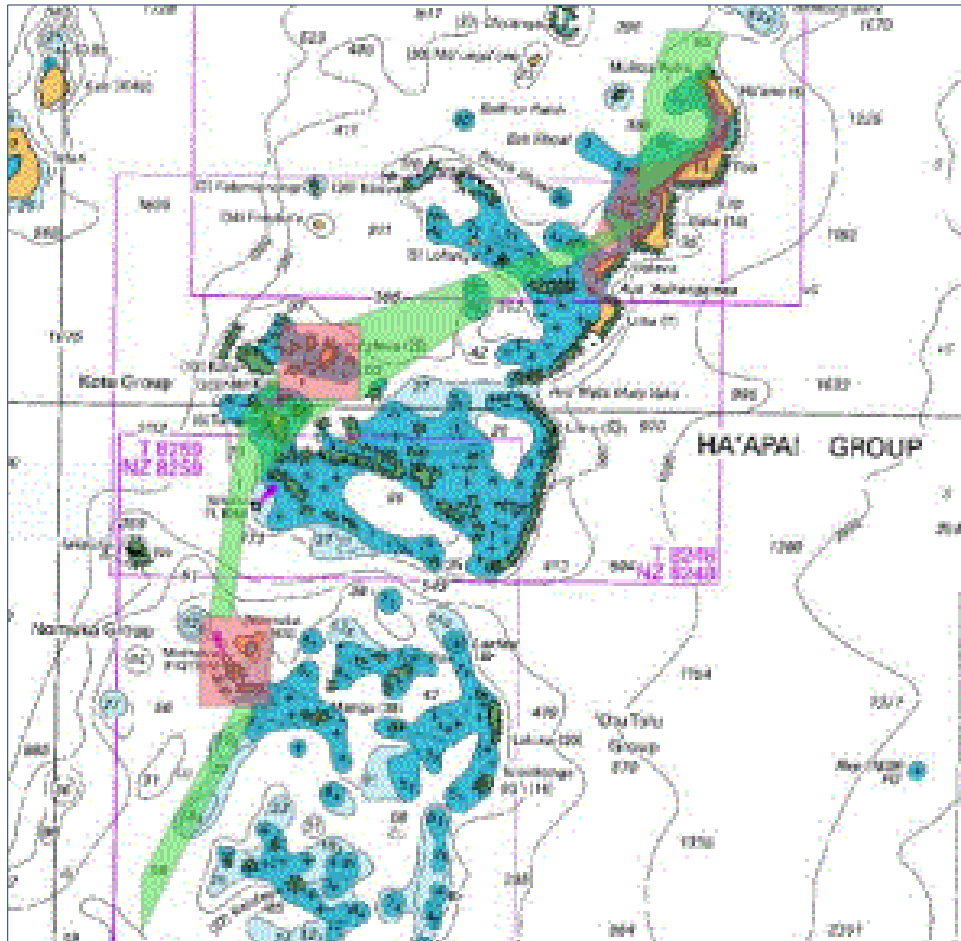


Figure 1: Ha'apai group

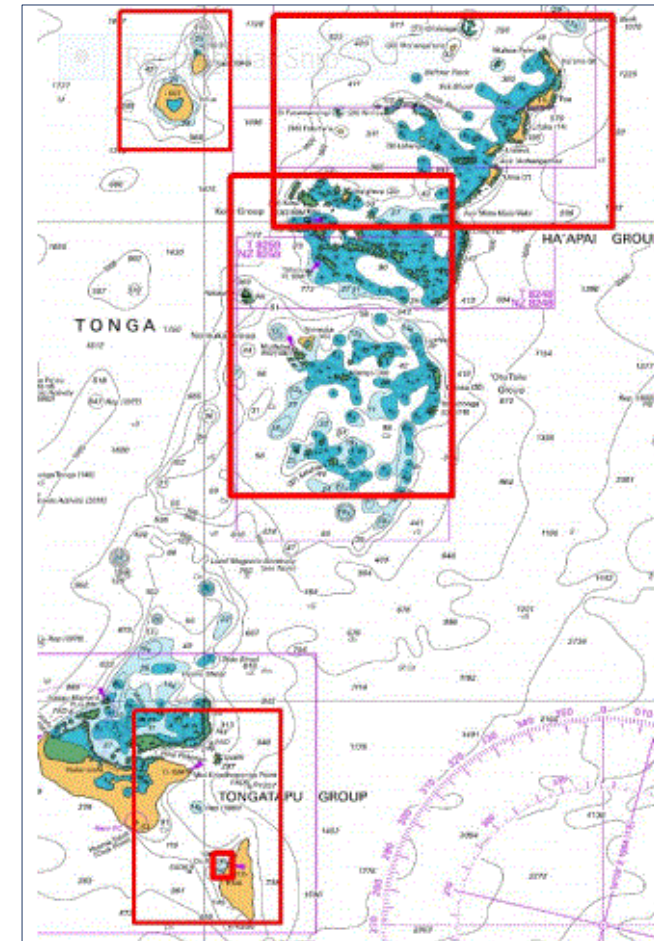
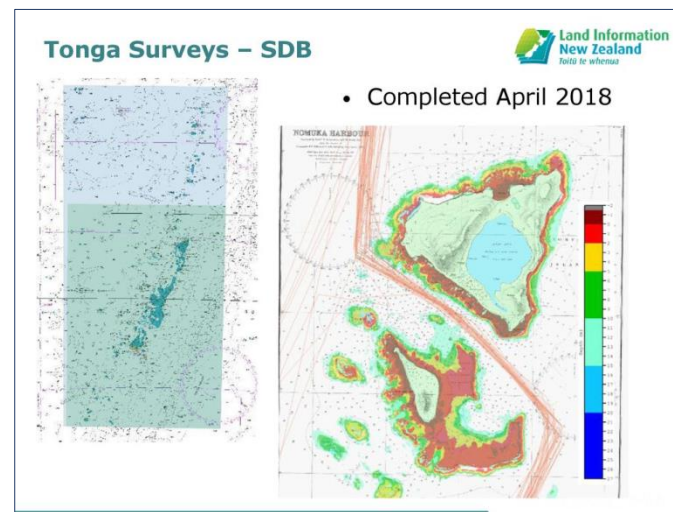
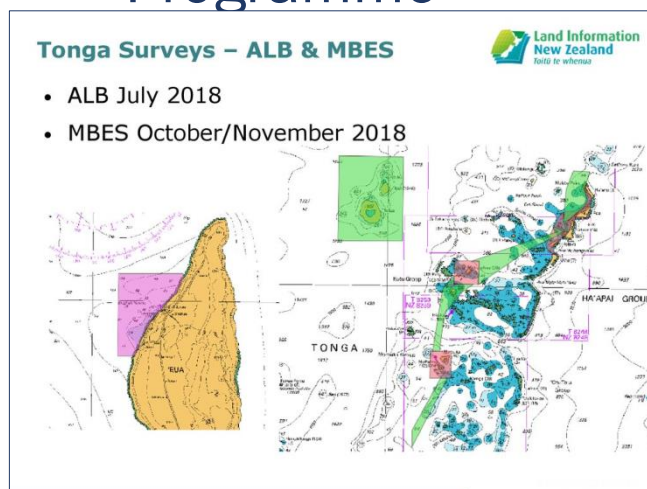


Figure 2: Extents of new charts

# Achievement

## Pacific Regional Navigation Initiative (PRNI) Programme



# Achievement

## Pacific Regional Navigation Initiative (PRNI) Programme

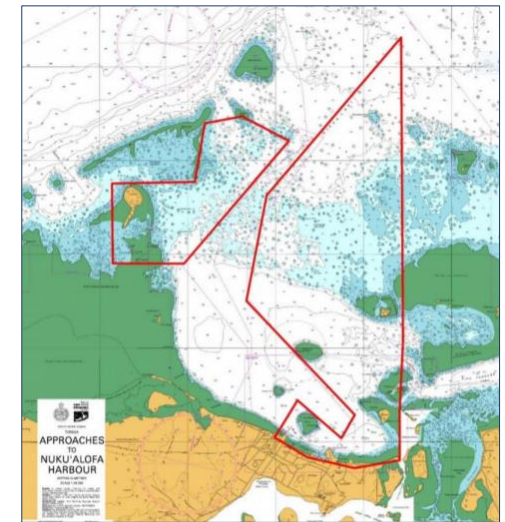
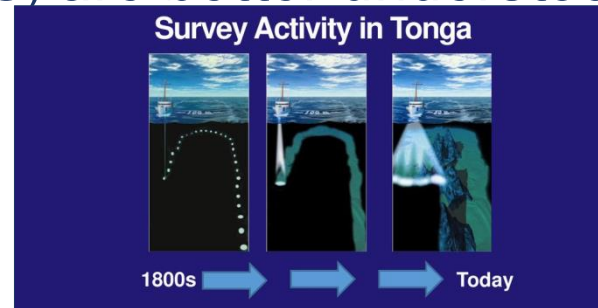
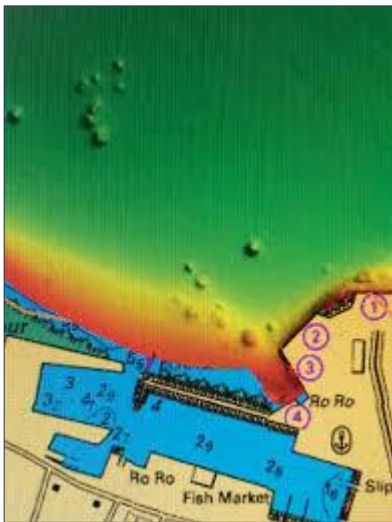




# Achievement

## Commonwealth Marine Economies (CME) Programme

- Funded by UK
- Aim;- To ensure marine resources in Commonwealth Small Island Developing State (SIDS) are better understood and managed



# General Overview of Chart Changes

Old withdrawn charts	New charts
T 8247/NZ 8247 (Ha'apai group Northern Portion)	TO 401 (Northern Ha'apai Group)
T 8248/NZ 8248 (Ha'apai group Southern Portion)	TO 402 (Southern Ha'apai and Nomuka Groups)
T 8259/NZ 8259 (Nomuka group)	TO 403 (Ha'afeva and Nomuka)
	TO 404 (Approaches to Lifuka)
	TO 503 (Nuku'alofa Harbour to Port 'Ohonua)

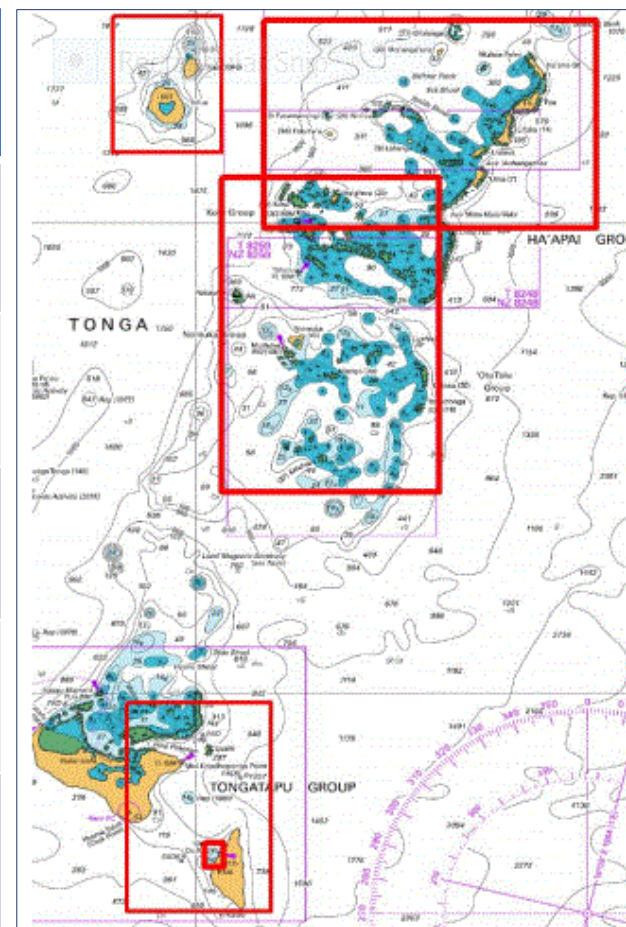


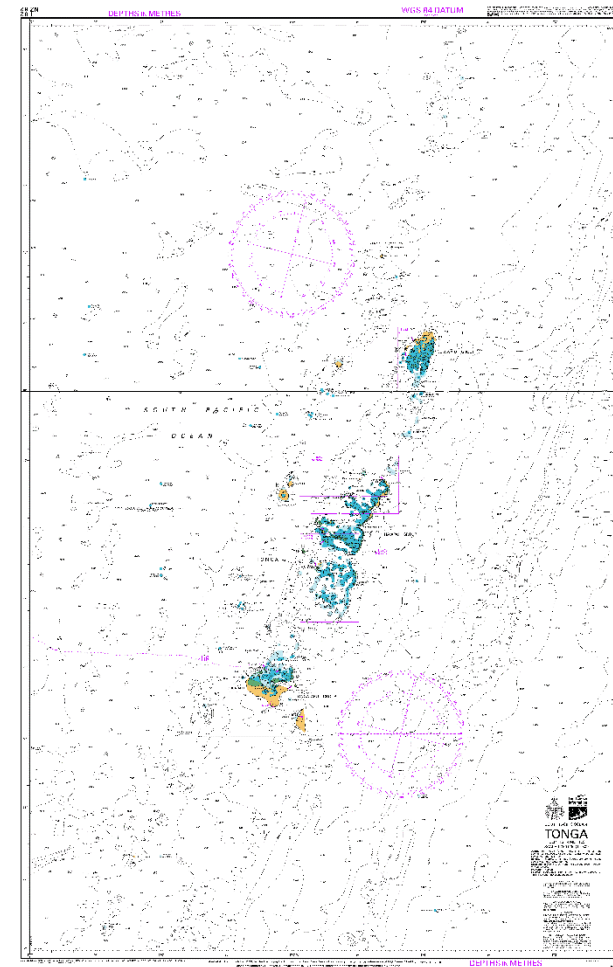
Figure 2: Extents of new charts



# General Overview of Tongan Charts

## Tongan Paper Charts

T 82/ NZ 82 Tonga	T 8277/ NZ 8277 Nuku'alofa Harbour		TO 401 (Northern Ha'apai Group)
T 8266/ NZ 8266 Anchoring in Tonga	T 822/ NZ 822 Vava'u Group		TO 402 (Southern Ha'apai and Nomuka Groups)
T 827/ NZ 827 Approaching to Tongatapu including 'Eua	T 8225/ NZ 8225 Neiafu Harbour		TO 403 (Ha'afeva and Nomuka)
T 8275/ NZ 8275 Approaches to Nuku'alofa Harbour	T 8215/ NZ 8215 Niuatoputap and Niuafu'ou		TO 503 (Nuku'alofa Harbour to Port 'Ohonua)

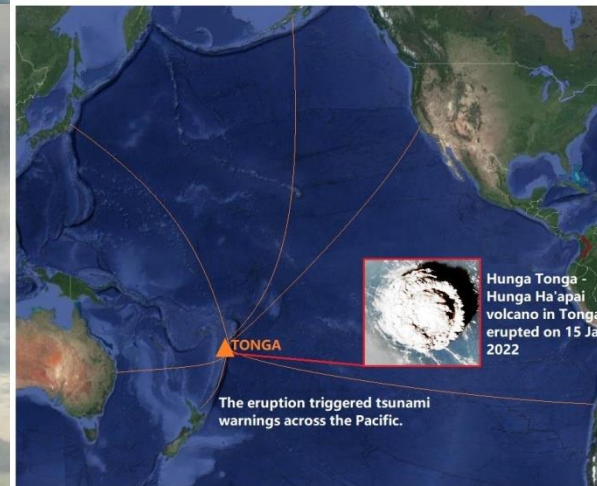


# General Overview (ENC – Charts)

Withdrawn	Replaced By	Published Date(Withdrawn Date)
ENCs		
NZ382151 South Pacific Ocean - Tonga - Niuatoputapu Group and Niufo'ou - Niufo'ou	TO302011 South Pacific Ocean - Tonga - Niuatoputapu Group and Niufo'ou - Niufo'ou	December 2021
NZ382152 South Pacific Ocean - Tonga - Niuatoputapu Group and Niufo'ou - Niuatoputapu and Tafahi	TO302012 South Pacific Ocean - Tonga - Niuatoputapu Group and Niufo'ou - Niuatoputapu and Tafahi	December 2021
NZ508215 South Pacific Ocean - Tonga - Niuatoputapu Group and Niufo'ou - Niuatoputapu Harbour	TO500201 South Pacific Ocean - Tonga - Niuatoputapu Group and Niufo'ou - Niuatoputapu Harbour	December 2021
NZ608215 South Pacific Ocean - Tonga - Niuatoputapu Group and Niufo'ou - Niuatoputapu Harbour Entrance	TO600201 South Pacific Ocean - Tonga - Niuatoputapu Group and Niufo'ou - Niuatoputapu Harbour Entrance	December 2021
NZ508225 South Pacific Ocean - Tonga - Neiafu Harbour	TO500301 South Pacific Ocean - Tonga - Neiafu Harbour	December 2021
NZ400822 South Pacific Ocean - Tonga - Vava'u Group	TO400302 South Pacific Ocean - Tonga - Vava'u Group	December 2021
NZ408275 South Pacific Ocean - Tonga - Approaches to Nuku'alofa Harbour	TO400502 South Pacific Ocean - Tonga - Approaches to Nuku'alofa Harbour	December 2021
NZ508277 South Pacific Ocean - Tonga - Nuku'alofa Harbour	TO500504 South Pacific Ocean - Tonga - Nuku'alofa Harbour	December 2021
NZ508238 South Pacific Ocean- Tonga- Approaches to Lifuka	TO500404-South Pacific Ocean- Tonga- Approaches to Lifuka	August 2021
NZ608238 South Pacific Ocean- Tonga- Ava Limu Moto Entrance	TO504041 - South Pacific Ocean- Tonga- Ava Limu Moto Entrance	August 2021
NZ300827 South Pacific Ocean- Tonga- Approaches to Tongatapu Including 'Eua	TO300501-South Pacific Ocean- Tonga- Approaches to Tongatapu Including 'Eua	May 2020
-	TO500403 - South Pacific Ocean - Tonga - Ha'afeva and Nomuka	May 2020
-	TO400401 - South Pacific Ocean - Tonga - Northern Ha'apai and Nomuka Groups	September 2021
-	TO400402 - South Pacific Ocean - Tonga - Southern Ha'apai and Nomuka Groups	September 2021
-	TO400503-South Pacific Ocean- Tonga- Nuku'alofa Harbour to Port Ohonua	May 2020
-	TO500503-South Pacific Ocean- Tonga- Port Ohonua	May 2020
-	TO400405 South Pacific Ocean – Tonga - Tofua and Kao	Not yet published
NZ300082 South Pacific Ocean - Tonga	TO300101 - South Pacific Ocean – Tonga	Not yet published

# Volcanic Eruption

(Hunga Tonga Hunga Ha'apai)





# Challenges

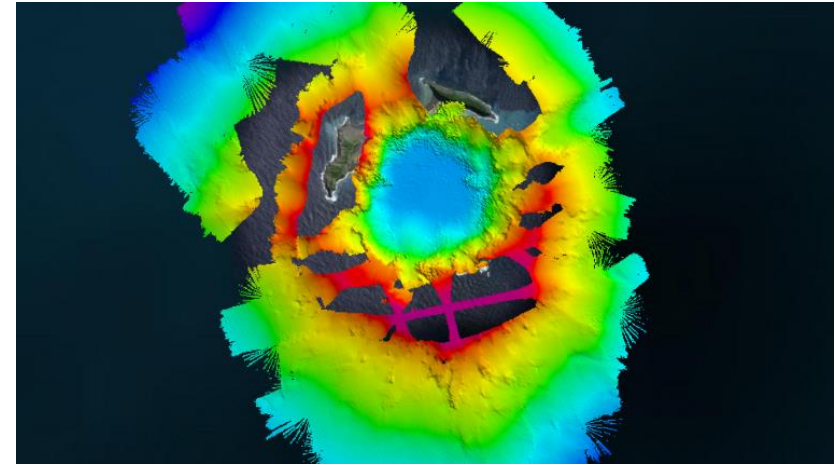
- No Survey equipment
- A few inexperience Hydrographic Surveyor
- No Hydrographic Legislation, Policy & Guidelines
- Hydrographic Survey are foreign Aid fund reliant
- Hydrographic operation is not priority by Government and Politian



# Good News

## Hunga Tonga Hunga Ha'apai Hydrographic Survey

- *Aerial view of the Hunga-Tonga Hunga-Ha'apai (HT-HH) volcano.*
- *SEA-KIT*
- *RV Tangaroa*





**Malo 'Aupito!**

**&**

**THANK YOU  
FOR YOUR  
ATTENTION**

