

MSI in NAVAREA XIV

Submitted by New Zealand/NAVAREA XIV Coordinator

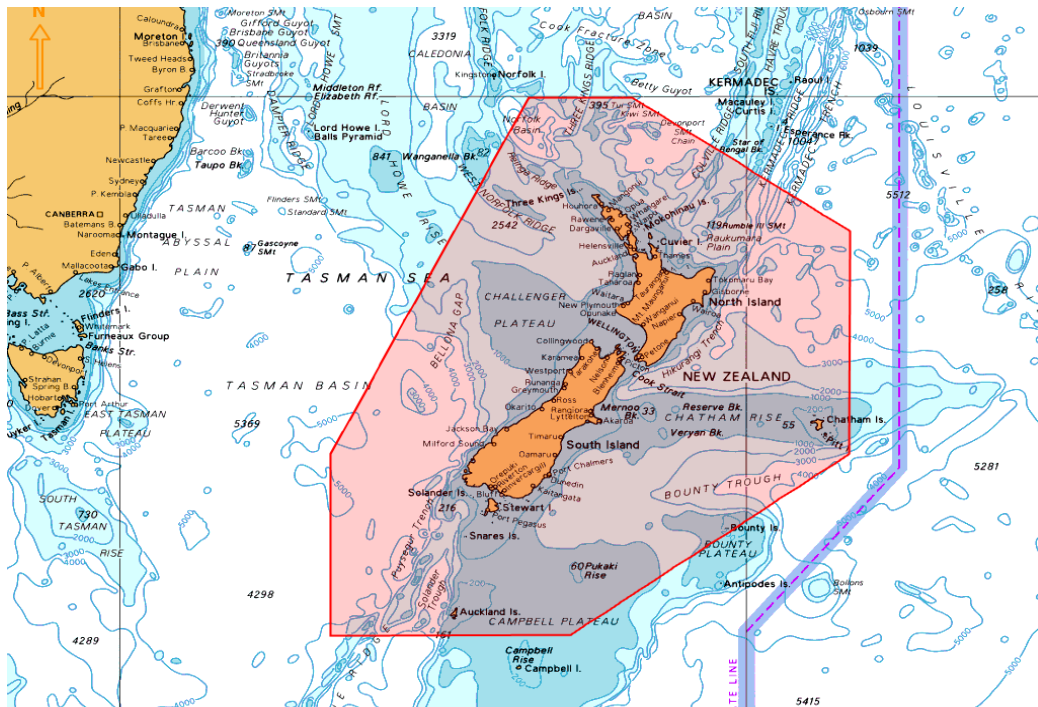
1. Background:

The limits of NAVAREA XIV are given as:

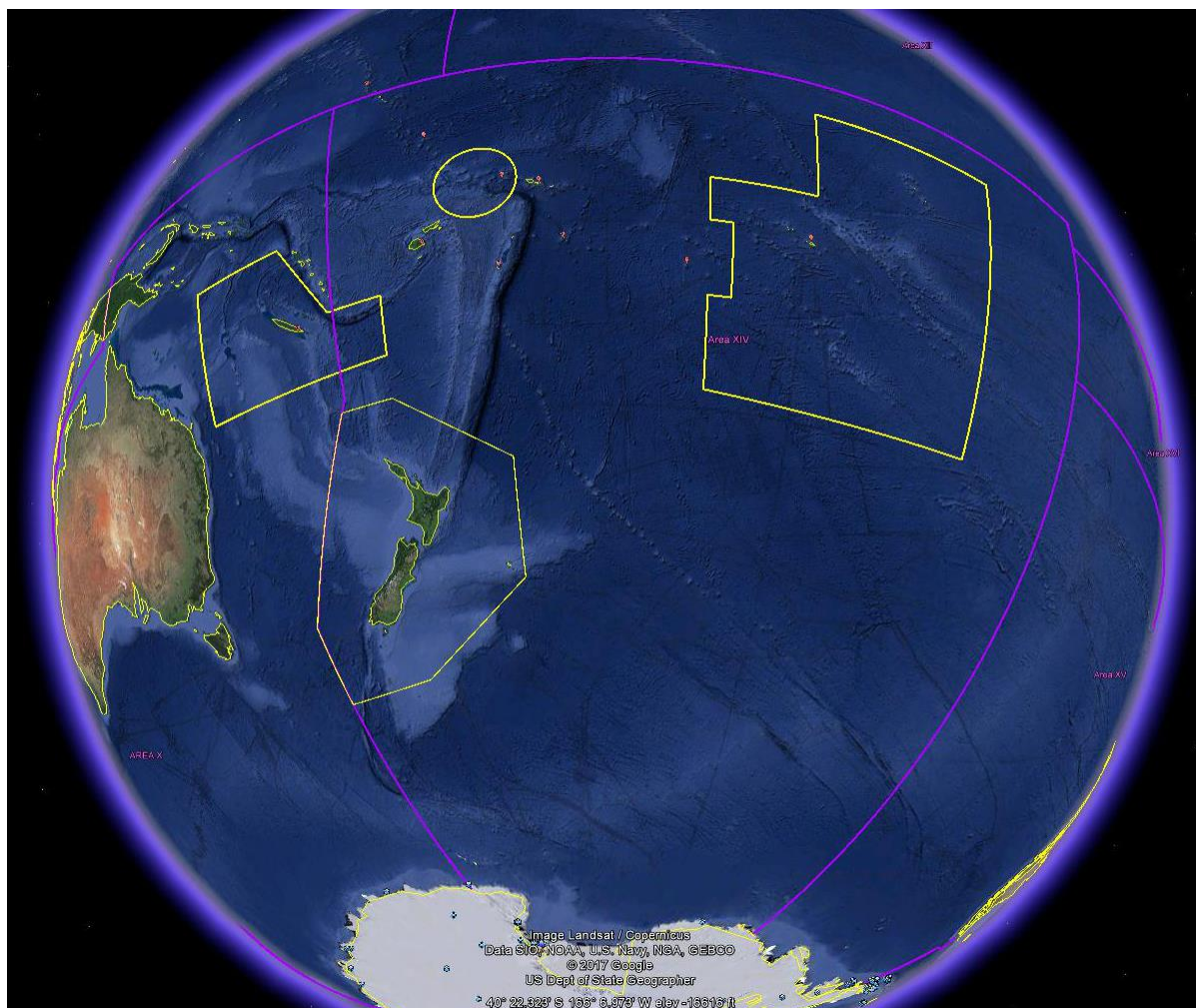
- 69° 37'S, 160° 00'E (Antarctic coast) to
- 45° 00'S, 160° 00'E to
- 29° 00'S, 170° 00'E to
- 00° 00'N, 170° 00'E to
- 00° 00'N, 120° 00'W to
- 73° 50'S, 120° 00'W (Antarctic coast)



New Zealand Coastal Warning Area 'Z' is depicted below.



NAVAREA XIV with all Coastal Warning Areas depicted below.



NAVAREA XIV and New Zealand Coastal Warnings are broadcast via:

Taupo Maritime Radio ZLM (Radio Telephony) at the first scheduled time following receipt and then at the scheduled times as per ALRS Vol 3(2) whilst the warnings are in force or until they have been promulgated by other means; and

EGC as follows:

Inmarsat - SafetyNET II service via the Pacific Ocean Region (POR) and Atlantic Ocean Region – West (AOR-W) satellites, through the Inmarsat Maritime Safety Servers for broadcast to Inmarsat C and Mini C via the Network Control Station (NCS) and to Fleet Safety via the Broadband Global Area Network Satellite Access Station (BGAN SAS). Warnings broadcast on receipt and scheduled at 0900 and 2100 UTC.

Iridium – SafetyCast service via the Iridium Gateway Server through all satellites covering the New Zealand areas of responsibility.

Operational Points of Contact for National Co-ordinators within the NAVAREA

COUNTRY	INSTITUTION	TELEPHONE	FACSIMILE	EMAIL
Cook Islands	Ministry of Transport	(W) +682 28810 (M) +682 77403		marah.tairi@cookislands.gov.ck MOT.maritime@cookislands.gov.ck
French Polynesia	JRCC Tahiti	+689 405 41616	+689 404 23915	contact@jrcc.pf
Fiji	Maritime Safety Authority Fiji	+679 331 5266	+679 331 3127	msi@msaf.com.fj skumar@msaf.com.fj
Kiribati	Ministry of Information, Communications, & Transport (MICT)	(W) +686 74026003 Ext 232 (M) +686 73022727		eritaia.tauro@mict.gov.ki
New Caledonia	MRCC New Caledonia	+687 292121	+687 292 303	operations@mrcc.nc
New Zealand	RCCNZ	+64 4 577 8030	+64 4 577 8038	rccnz@maritimenz.govt.nz
Niue	Ministry of Infrastructure	+683 888 6983		lynsey.talagi@mail.gov.nu
Samoa	Ministry of Works, Transport & Infrastructure	(W) +685 21611 (M) +685 7187589	+685 22671	mau.simanu@mwti.gov.ws sonny.brown@mwti.gov.ws makerita.atonio@mwti.gov.ws
Tonga, Kingdom of	Ministry of Infrastructure, Marine & Ports Division	(W) +676 22 555 (M) +676 7786157	+676 42 467	sioeli_fifita@yahoo.co.nz sioelif@infrastructure.gov.to
Tuvalu	Ministry of Transport, Energy and Tourism. Dept of Marine and Port Services	+688 20055		taasi.pitoi@gmail.com TPitoi@gov.tv
Wallis & Futuna	MRCC New Caledonia	+687 292121	+687 292 303	operations@mrcc.nc

2. Comments:

The NAVAREA XIV Coordinator six monthly communications checks with the nine National Coordinators (outside of New Zealand) continue, and this has proven to be an effective method to ensure contact details are correct.

NAVAREA XIV EGC Messages

2020	2021	2022
225	232	270

Subjects of NAVAREA XIV Warnings included casualties to AtoNs, drifting hazards, wrecks located, military exercises, pipe and cable laying operations, rocket launching and space debris, tsunami threats and malfunction of shore-based MSI services. 62 warnings were issued for rocket launching/space debris, which is a significant increase from previous years.

MSI Received from Coastal States within NAVAREA XIV

Coastal State/Country	Number of MSI messages	Topics/Subjects of messages	MSI Courses Attended
Cook Islands	1	AtoN	2010, 2014, 2016, 2018
Fiji	70	AtoNs, Cable laying ops, Pipeline installations, Wrecks, Tropical cyclone damage, Towing of large floating dock	2010, 2014, 2016, 2018
French Polynesia	120	Military exercises, Space debris, Drifting hazards, Towing operations and AtoNs	2010, 2014, 2016, 2018
New Caledonia	19	Military exercises, Drifting hazards and SAR operation	2010, 2014, 2016, 2018
Niue	0		2016, 2018
Samoa	1	Data collecting buoys	2016, 2018
Tonga	4	Volcanic activity, survey, military exercises	2010, 2014, 2016, 2018
Tuvalu	0		2016, 2018
Wallis & Futuna	0		Covered by New Caledonia
Kiribati	3*	AtoNs, Space debris	2016, 2018

*Kiribati lies mostly within NAVAREA XI and all MSI is sent directly to the NAVAREA XI Coordinator

3. National reports

As part of the January 2023 communications checks, an email was sent reminding the NAVAREA XIV National Coordinators to complete the MSI Self Assessments at Annex C of their National Reports.

4. NAVTEX Coverage:

N/A

5. Operational Issues:

Maritime New Zealand is developing a user interface to enable broadcasting of navigational warnings and SAR information via the APIs implemented by Inmarsat and Iridium. Testing of this interface is expected to commence by February 2023.

6. Capacity Building:

The SWPHC is arranging for a Maritime Safety Information (MSI) Regional Training Course to be held in 2023. The Fiji Hydrographic Service has agreed to host this training, which will likely take place in Nadi, Fiji later in 2023. SWPHC is coordinating arrangements with the SPWHC Capacity Building Coordinator and will provide updates in due course. The Fiji National MSI Coordinator, NAVAREA X and NAVAREA XIV Coordinators will develop and deliver the training.

7. Other Activities:

The NAVAREA XIV Coordinator attends meetings of the WWNWS SC, EGC API WG, IHO DRWG, S-124 PT, IMO EGC Coordinating Panel, NCSR, MSC and is engaged with the MSI&SAR CG and Revision of resolution A.1001(25) CG. In addition, NAVAREA XIV is co-coordinating an IHO WWNWS Space Activity Working Group with NAVAREA IV/XII and WMO Task Team on Volcanic Activity and Safety of Marine Navigation with the METAREA XIV Coordinator.

8. NAVAREA Website:

NAVAREA XIV warnings in force: www.maritimenz.govt.nz/navarea

During 2022, the NAVAREA XIV web page received 16,683 page views.

The NAVAREA XIV website is updated in near-real time. The date and time of the last update is displayed on the web page.

9. NAVAREA Contact Information:

NAVAREA XIV Coordinator
Maritime New Zealand
RCCNZ
41 Percy Cameron Street, Avalon Studios Level 1
PO Box 30050
LOWER HUTT 5040
New Zealand
Tel: +64 4 577 8030 (24 hours)
FAX: +64 4 577 8038 (24 hours)
E-mail rccnz@maritimenz.govt.nz (24 hours)
Website: <http://www.maritimenz.govt.nz/navarea>

10. Actions requested:

SWPHC to note the information provided.

11. Synopsis:

This report highlights the MSI activities for the year 2022.

New Zealand is actively involved with a number of IMO and IHO Sub-Committees and Working Groups, and capacity building in the SWP region for MSI, maritime safety and SAR through the Pacific Community (SPC) and PMSP. The NAVAREA XIV Coordinator is regularly engaging with the National Coordinators in NAVAREA XIV in an effort to improve communications and ensure contact details are correct.