

21st Meeting of the South West Pacific Hydrographic Commission

National Report by
New Zealand



IHO

International
Hydrographic
Organization

SWPHC21 28 Feb 2024





New Zealand is responsible for charting nearly 25 million square km of ocean, from the Cook Islands, down to the Ross Sea in Antarctica.

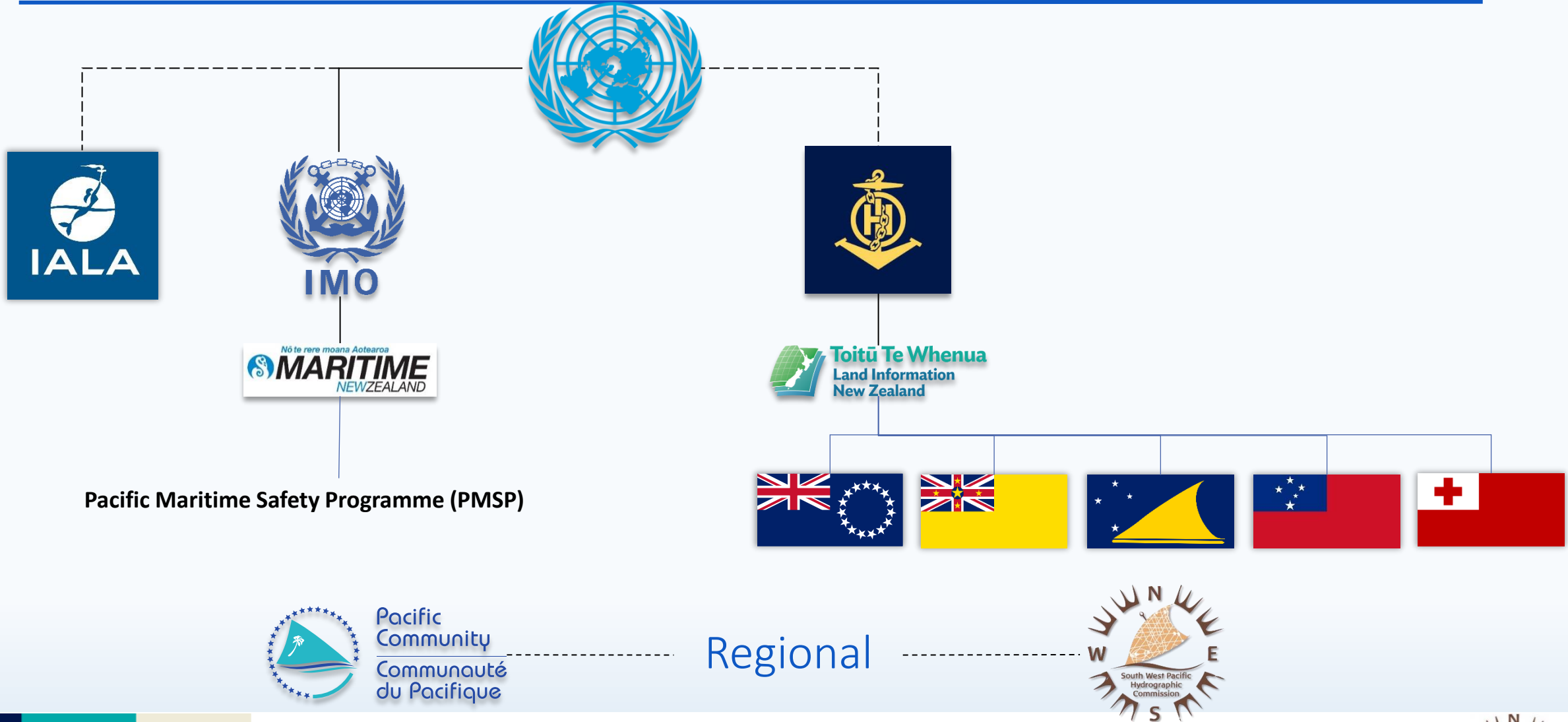


IHO

International
Hydrographic
Organization



International & Regional Community



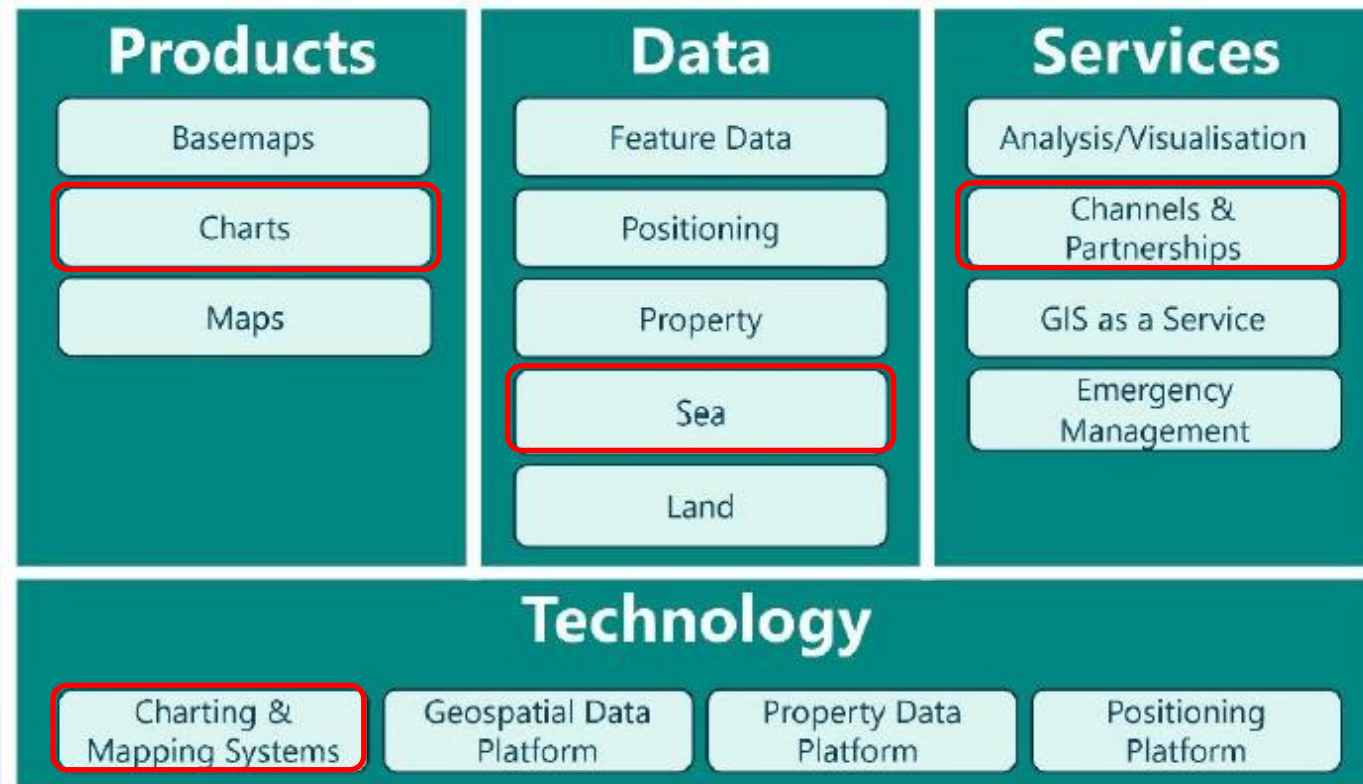
IHO

International
Hydrographic
Organization



Main achievements during the year

- Meeting NZ Government budget savings
- Implementation of LINZs new structure and ways of working
- NZHA Advisory Group established



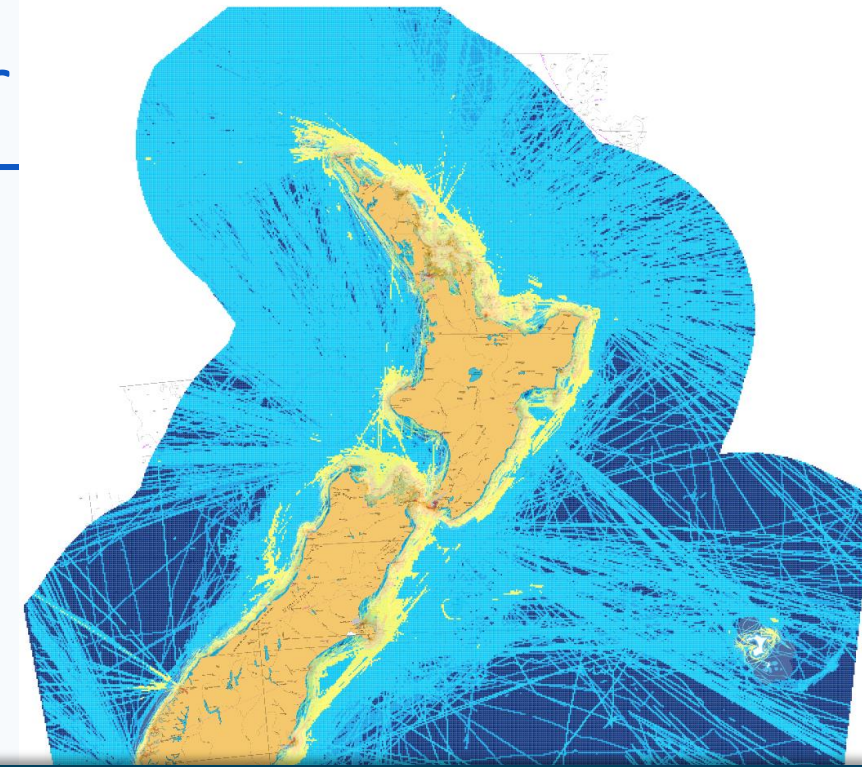
IHO

International
Hydrographic
Organization



Main achievements during the year

- Hydrographic Risk Assessment completed
- Increased effort in supporting Māori/Iwi accessing and reusing MGI
- NZ MGI Inventory and WebApp, providing access to support discovery of MGI collected in New Zealand and facilitate access to data portals.
- 5th Pacific Regional Energy & Transport Minister's Meeting attendance
 - Paper
 - Intervention



NZ Marine Geospatial Information Working Group
NZ Marine Geospatial Inventory App

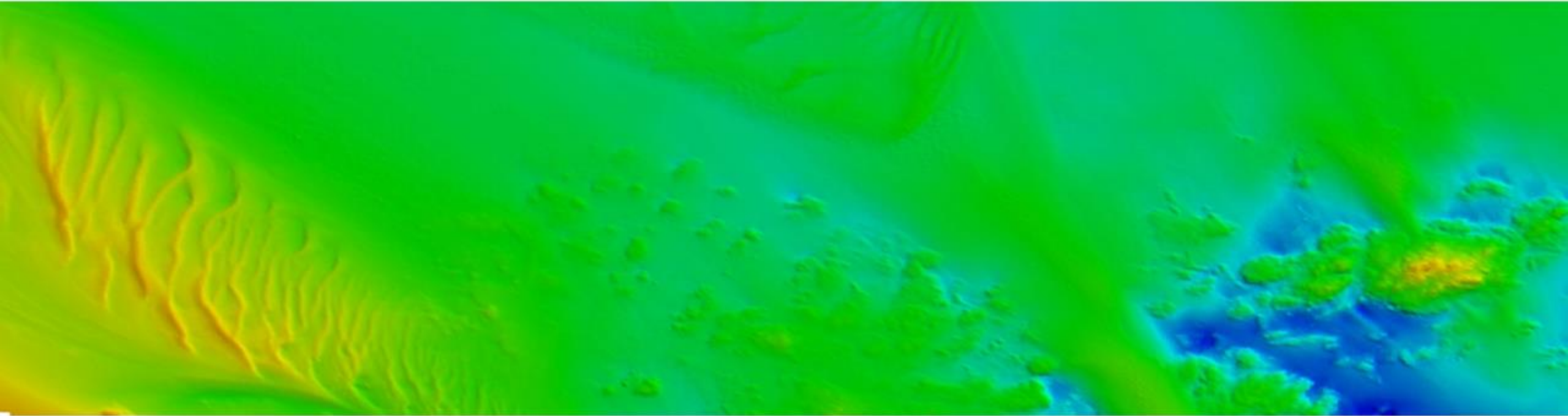
Region is: All
Category: All, Administrative areas and boundaries, **Biology**, Geoscience
Hydrography, Infrastructure, Mātauranga Māori, Ocean biochemistry, Ocean physics
Organisation is: LINZ

Region	Category	Region	Organisation	Portal 1	Portal 2	data.govt.nz	Email
Canterbury Region	Biology	Canterbury Region	LINZ			View	hydro@linz.govt.nz
Marlborough Region	Biology	Marlborough Region	LINZ			View	hydro@linz.govt.nz



IHO

International
Hydrographic
Organization



Mapping Aotearoa's Seafloor

A visual demonstration of Toitū Te Whenua LINZ's seafloor mapping programme

S-127 Marine Traffic Management

S-124 Navigational Warnings

S-412 Weather Overlay

S-100 Universal Hydrographic Data Model

[Link to video](#)

S-122 Under Keel Clearance Management (UKCM)

S-121 Maritime Limits and Boundaries

Main challenges and/or obstructions

- Secure funding for resources to deliver the IHO S-100 implementation roadmap
- Planning and preparing for the technical implementation of a gridded ENC schema and the S-100 Phase 1 Product Specifications
- Recruitment and retention of staff - building capacity & capability to deliver S-100 Phase 1

Phase 1 / Route Monitoring

Phase 1

Route Monitoring Mode

S-101 ENC
S-102 Bathymetry
S-104 Water Level
S-111 Surface Currents
S-124 Navigational Warnings
S-129 UKC Management

Critical Framework

IHO Geospatial Information Registry
S-98 Interoperability Specification
S-100 Universal Hydrographic Data Model
S-128 Catalogue of Nautical Products
S-164 Test Data Set for S-100 and ECDIS
Type Approval

Figure 2 The IHO Navigational Package, for S-100 ECD layers and Phases may be added in the future.



IHO

International
Hydrographic
Organization



Any other matters of interest

- New NIWA scientific research vessel, *RV Kaharoa II*, mid-2024
- GNS Science evaluating SDB for tsunami inundation modelling
- 3D Coastal Mapping project
 - 200m inland – 25m WD
 - Improve data for inundation modelling



IHO

International
Hydrographic
Organization



Vinaka



IHO

International
Hydrographic
Organization

SWPHC21 28 Feb 2024

