

21st Meeting of the South West Pacific Hydrographic Commission

National Report by

TUVALU



IHO

International
Hydrographic
Organization

South West Pacific Hydrographic Commission



Main achievements during the year



- AtoN workshop

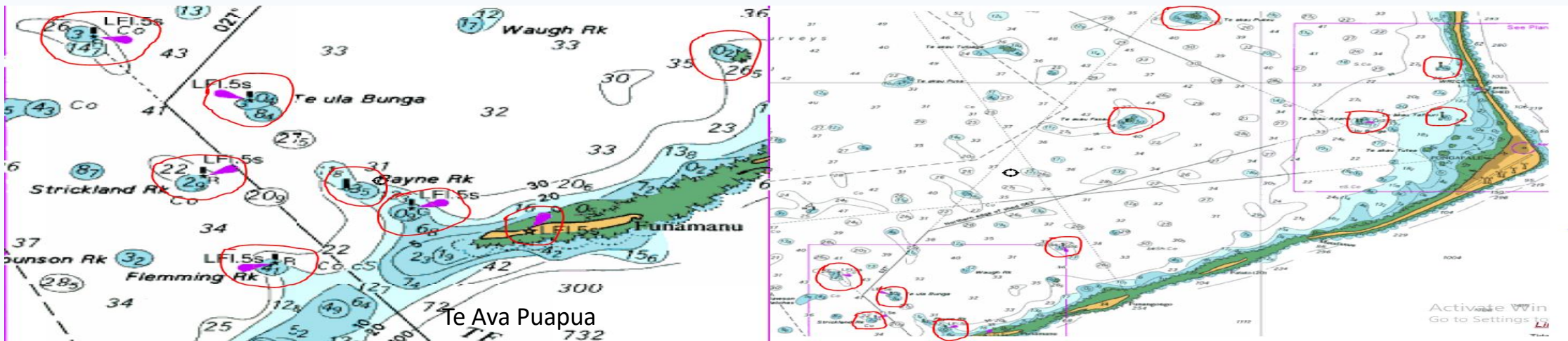


IHO

International
Hydrographic
Organization

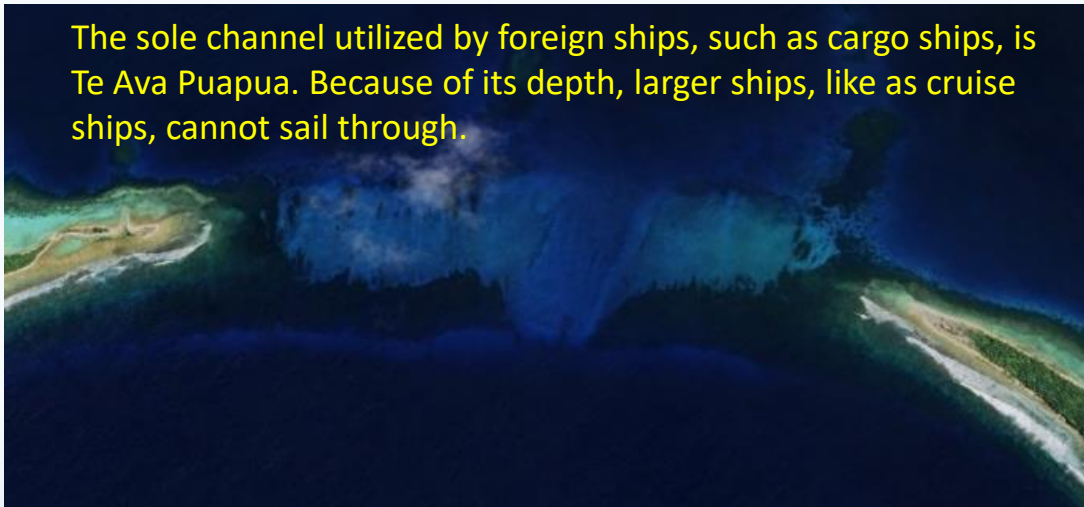


Main challenges and/or obstructions



The sole channel utilized by foreign ships, such as cargo ships, is Te Ava Puapua. Because of its depth, larger ships, like as cruise ships, cannot sail through.

Emphasized the risks for safe navigation at night and during periods of intense rain, some AtoN must be installed, and not all of the lights are working.



Main challenges and/or obstructions

- Limited Resources
- Vulnerability to Climate Change
- Data Collection in remote Areas
- Capacity Building Needs
- Coordinating with International Partners
- Legal and Regulatory Framework

Addressing these challenges requires a collaborative approach involving the Tuvalu government, international organizations like the IHO, regional partners, and donor agencies. By working together, it is possible to overcome obstacles and improve hydrographic capabilities in Tuvalu for the benefit of maritime safety and sustainable development.



IHO

International
Hydrographic
Organization



Any other matters of interest

Aside from the challenges related to hydrography and maritime safety, there are several other matters of interest in Tuvalu that could be relevant for the International Hydrographic Organization:

- Community Engagement
- Disaster Risk Reduction

By engaging with Tuvalu on these broader matters of interest, the International Hydrographic Organization can contribute to holistic and sustainable development in the region, beyond the scope of traditional hydrographic activities.



IHO

International
Hydrographic
Organization



FAKAFETAI

THANK YOU



IHO

International
Hydrographic
Organization

