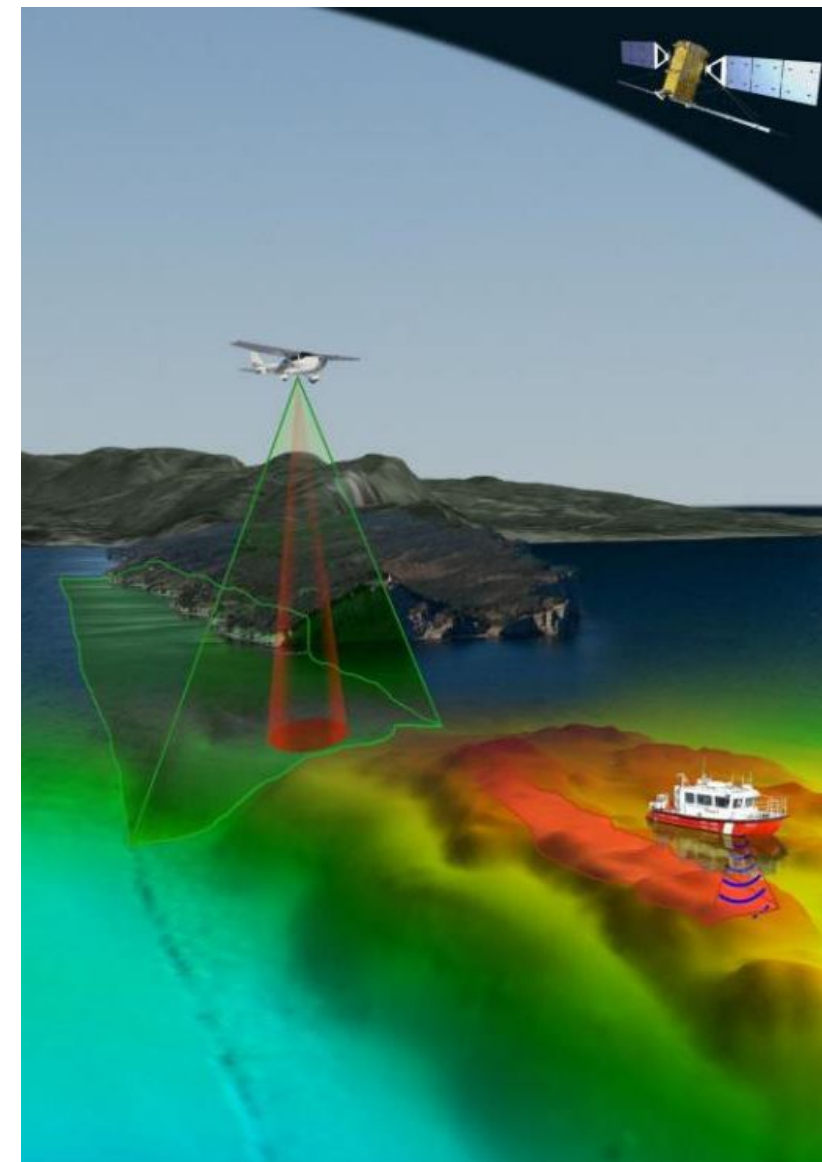




Defining way forward for Crowd Source Bathymetry implementation in CHS operation



Danna Galant, Mathieu Rondeau, Peter Wills, Brian Johnson,
Bailey Wright, Michel Breton and
Claude Tremblay
Canadian Hydrographic Service

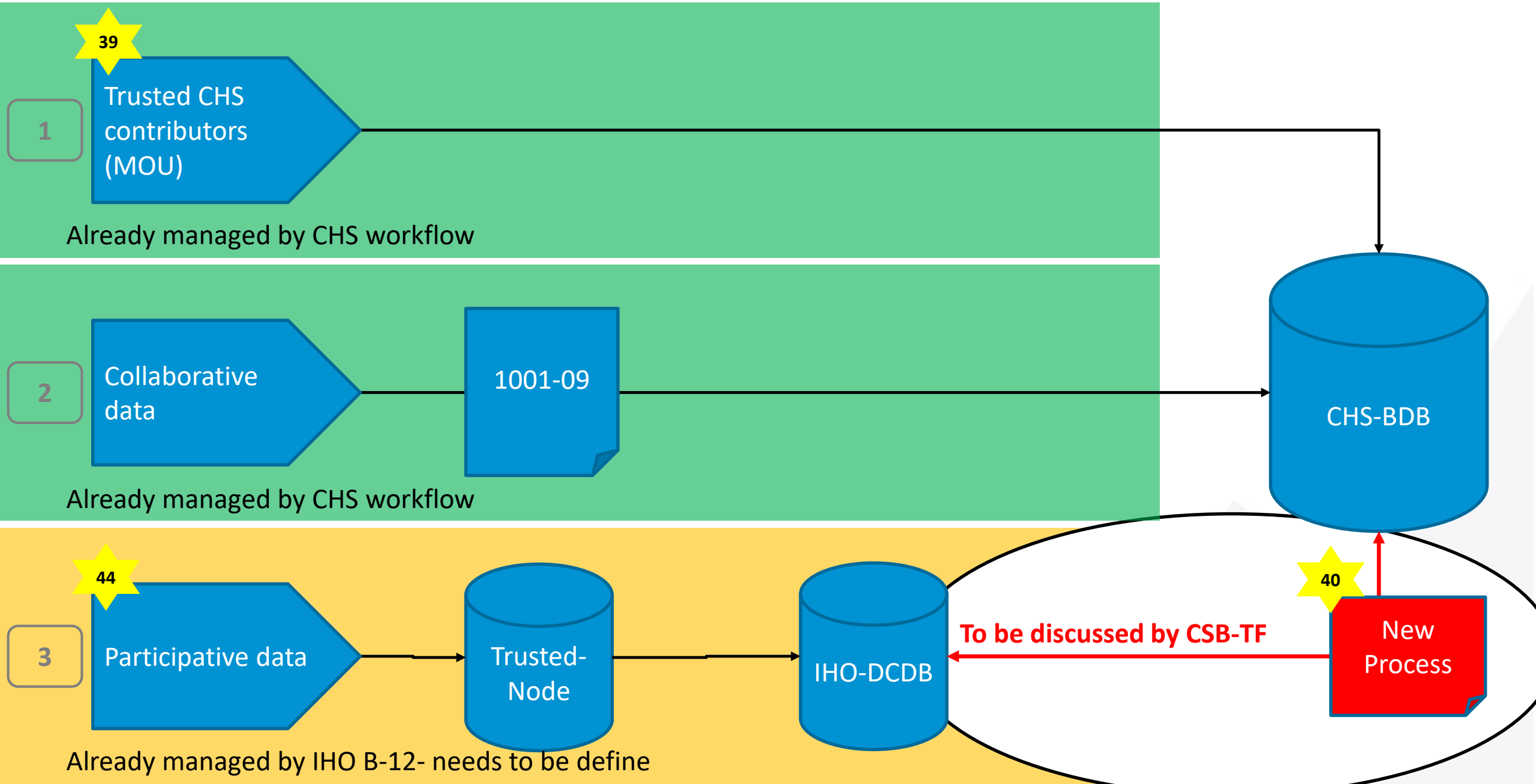


Crowdsource bathymetry TaskForce mandat

“To provide advice to the CEC on a way forward to best collect, accept and integrate CSB data into CHS regular data collection in order to better serve Canadians and navigation by providing more bathymetric data in a timely manner, in consideration of IHO orientation (B12)”.

Note: in the following slides, the yellow stars refer to the CHS transformation plan Gantt diagram (see the last slide for reference to the ad-hoc Gantt diagram section)

Actual situation - 3 Tiers





Task will include :

38

- Reviewing existing CHS CSB policy.
- Propose an implementation plan with stepping stone.
- Assessing the workload associated to CSB integration in CHS day to day operations.

The implementation plan will include:

37

- Asses other country's methods and adapt for CHS.
- Promote CSB inside CHS
 - Staff needs to be informed and adhere for full implementation
- Promote outside CHS
 - Promoting the Tier#1 and Tier#2 existing workflows (1001-05 see next slide)
 - Developing the Tier#3 workflow
- Define and support the establishment of Trusted-Nodes in Canada
- Lead the development of needed procedures to link DCDB to BDB

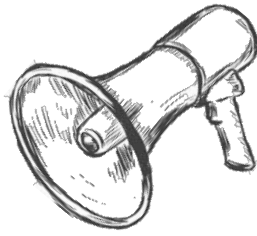
38

Note: in the following slides, the yellow stars refer to the CHS transformation plan Gantt diagram (see the last slide for reference to the ad-hoc Gantt diagram section)

45

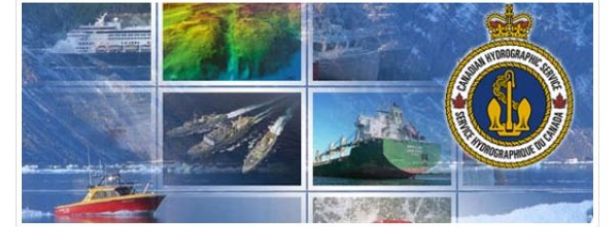
« CHS wants your data
Look here how to
contribute »

46



Nautical charts and services

Nautical charts, navigational products and survey results from the Canadian Hydrographic Service.



Follow:

CSB dedicated section

42

CSB policy

Gaps map

Adapted from NONNA-100

47

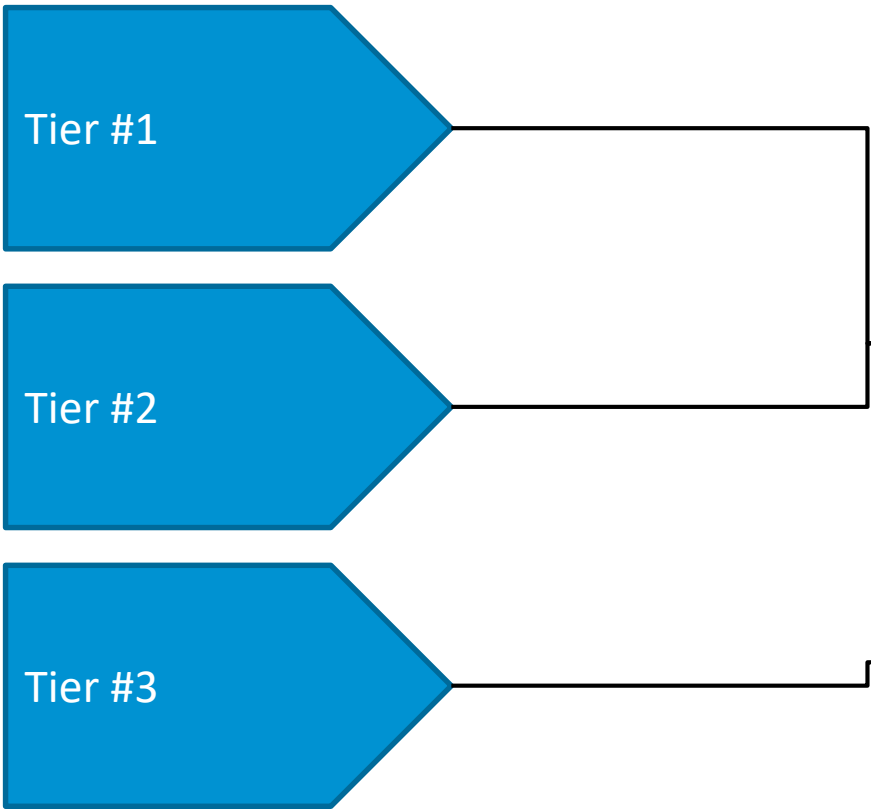
Guidelines #1 / #2

Adapted from CHS procedures

47

Guidelines #3

Adapted from B-12





44

Promote CSB outside CHS

- 1) Establishing guidelines to supervise data collection
 - To be developed for tier #1 and tier #2
 - Based on B-12 for tier #3
- 2) Establishing guidelines to supervise data documentation
 - To be developed for tier #1 and tier #2
 - Based on B-12 for tier #3
- 3) Establishing guidelines to route data
 - To CHS for tier #1 and tier #2
 - To DCDB for tier #3

Extracted from CHS transformation plan Gantt diagram

37 Crowd Source collection

38 Development of crowd source policy

39 MOU with Public Works and CCG

40 Development of CSB ISO procedures

41 Review of policy and approvals

42 Publish CSB policy

43 CSB collection

**44 Collaborative collection (should be renamed
« Participative collection »)**

45 Fostering Hydrographic Collection in Communities

46 Fostering regional collection initiatives

47 Development of procedures and guidelines

48 Develop equipment loan and policies

Thank you!



**Collaboration with staff from: CONCEPTS, DFO Ocean Science Branch and ECCC
Canadian Center for Meteorological and Environmental Prediction**