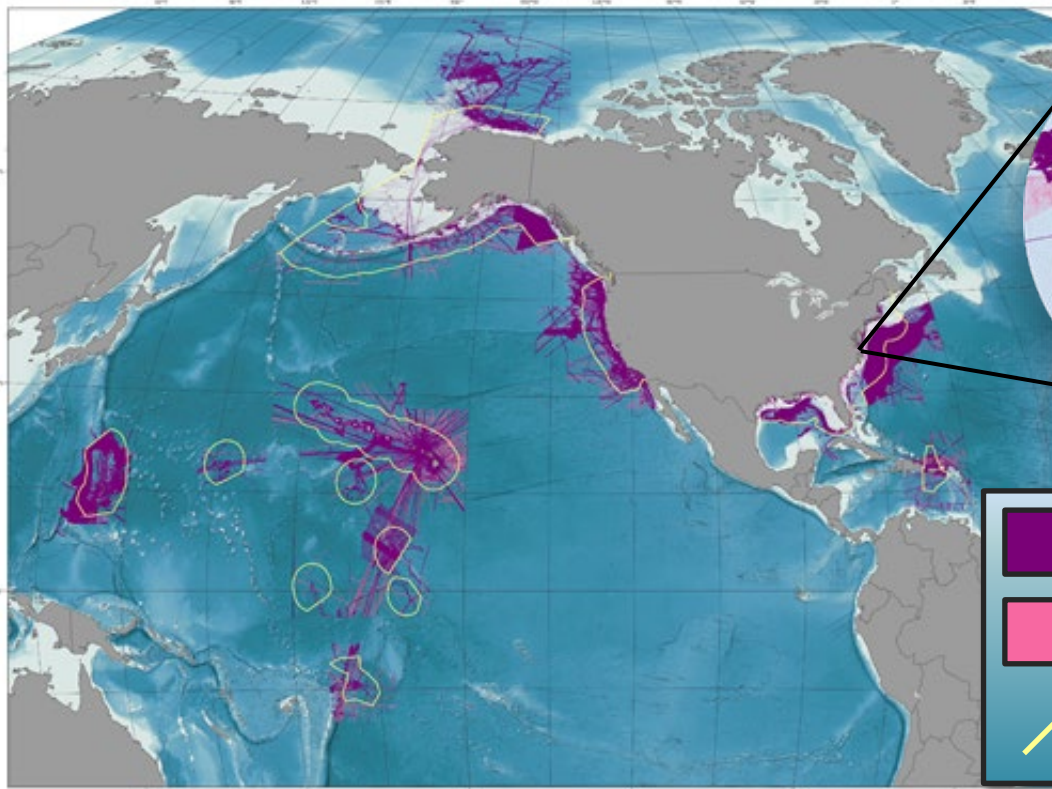
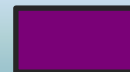


U.S. Bathymetry Gap Analysis Web Service



See NOAA's
GeoPlatform

Also, linked from
<https://iocm.noaa.gov/seabed-2030-bathymetry.html>



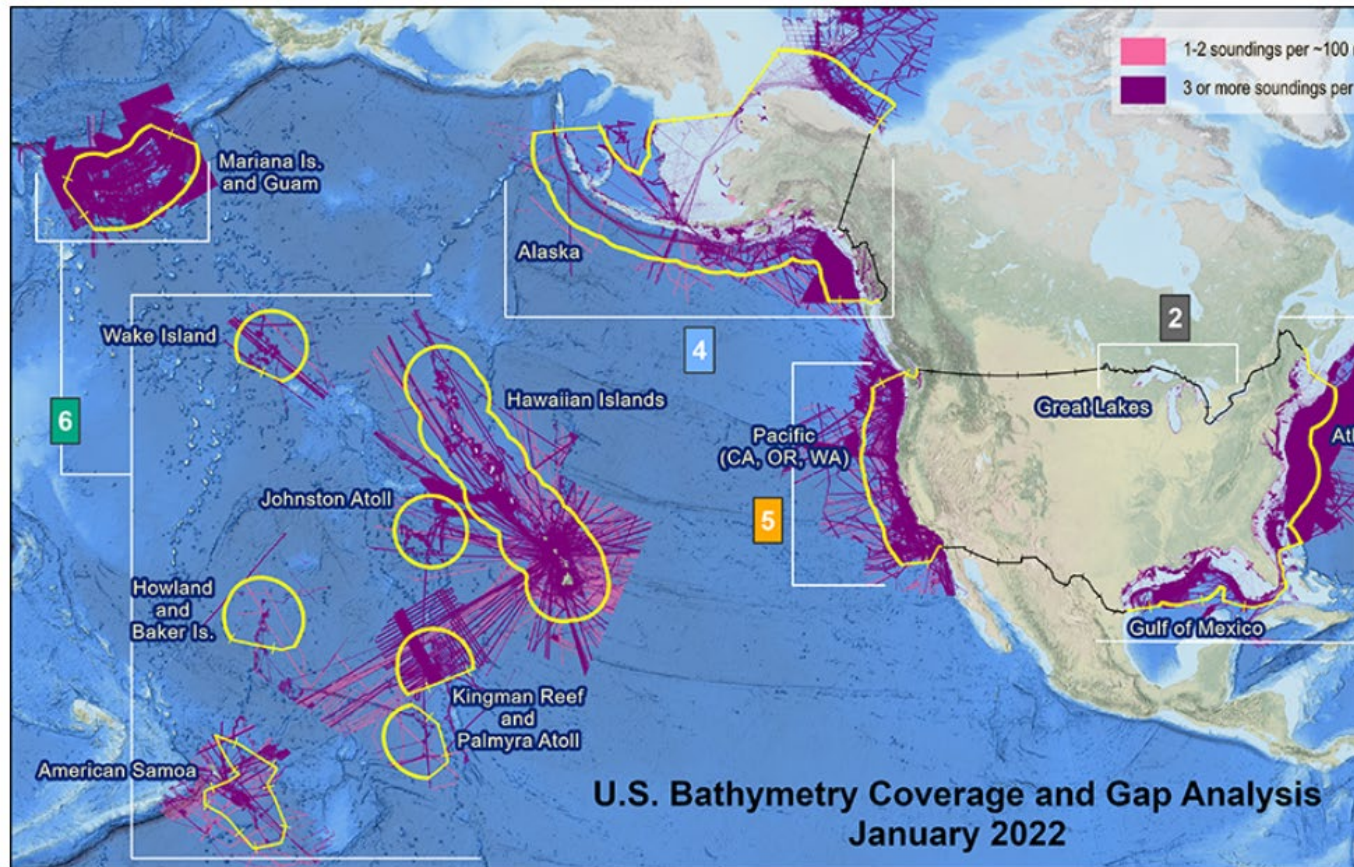
3 or more soundings per ~100 m cell



1-2 soundings per ~100 m cell



U.S. EEZ / Maritime Boundaries



	1	2	3	4	5	6	Total
	Atlantic & Gulf of Mexico	Great Lakes	Caribbean	Alaska	Pacific (CA, OR, WA)	Pac. Remote Isl. & Hawaii	
Total Area (sq nm)	472,200	45,100	61,600	1,080,200	239,700	1,691,700	
Area Mapped in Jan 2022 (sq nm)	282,900	3,200	35,900	335,900	192,700	878,400	
% Mapped	60%	7%	58%	31%	80%	52%	

[Details](#) | [Basemap](#)

[Print](#)

[Measure](#)

Find address or place

[About](#) | [Content](#) | [Legend](#)

Contents

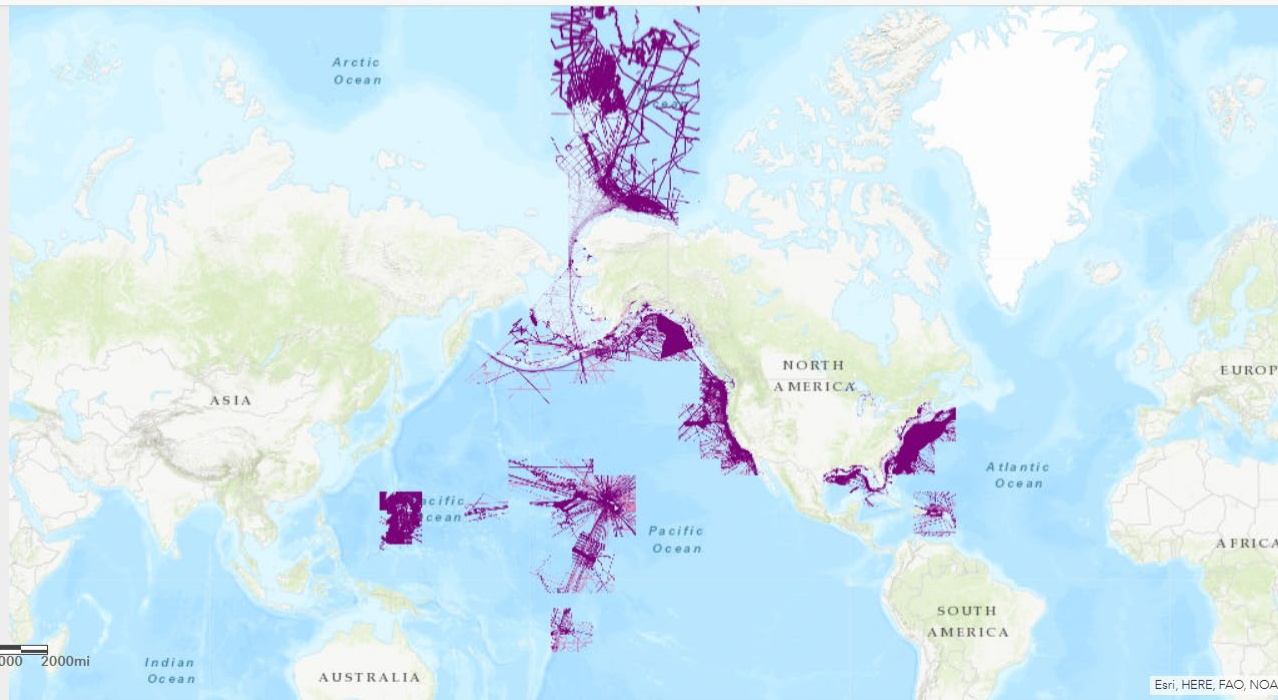
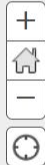
United States Bathymetry Gap Analysis

3 or more soundings per ~100m cell

1-2 soundings per ~100m cell

Topographic

World Topographic Map





IHO

International
Hydrographic
Organization

Data Centre for Digital Bathymetry Viewer

Layers

IHO DCDB/NOAA NCEI ?

- Multibeam Surveys ?
- Multibeam Survey Footprints ?
- Multibeam Bathymetry Mosaic ?

- Single-Beam Surveys ?
- Single-Beam Sounding Density ?

- NOAA Hydrographic Surveys: ?
 - All Surveys with Digital Data
 - Surveys with BAGs

- BAG Shaded Relief Imagery ?

?

- Crowdsourced Bathymetry Files ?

?

- U.S. Bathymetry Coverage and Gap Analysis ?

EMODnet

Australia

Canada

France

Germany

Grid Extract

More Information

Help



- Mercator
- Arctic
- Antarctic