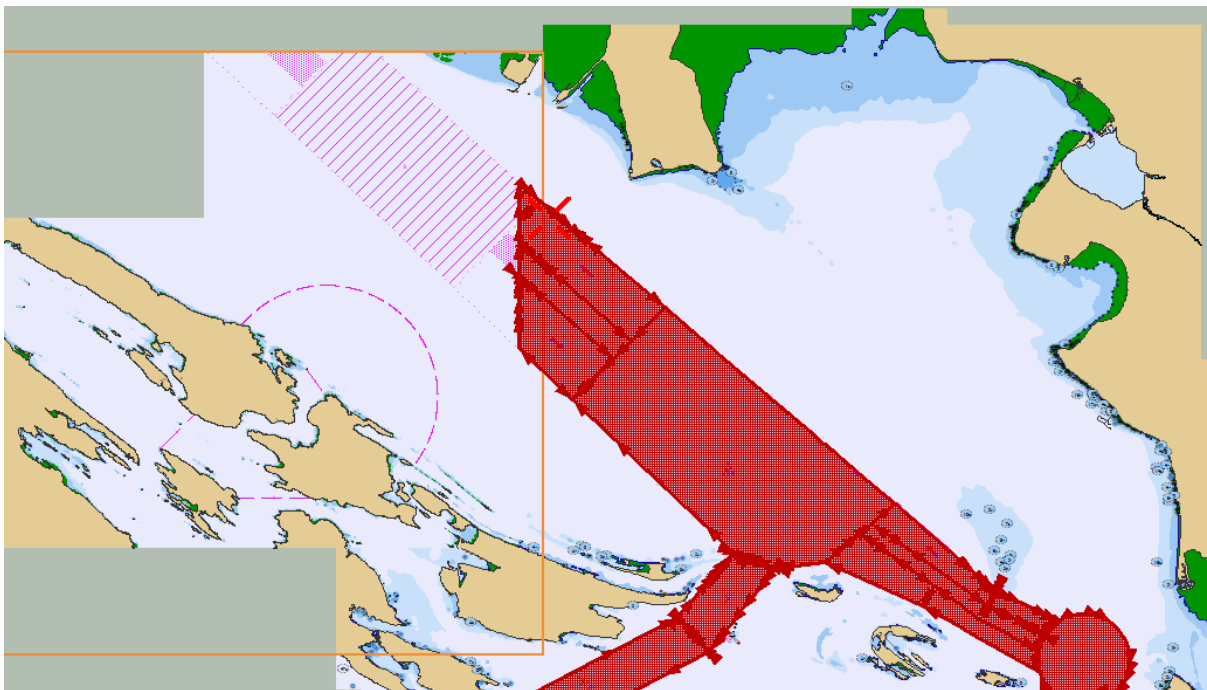
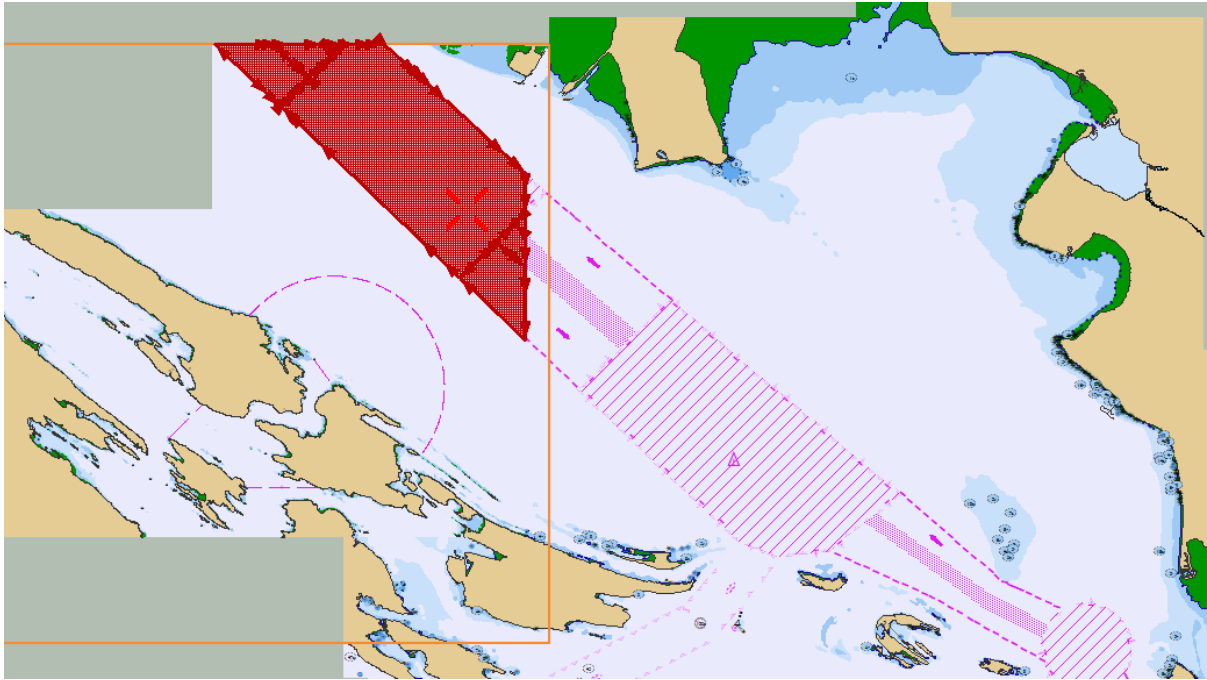


Example of encoded CATZOC differences in TSS encoded by 2 different producers.

Country AA and Country BB have encoded individual parts of a common Traffic Separation Scheme.

AA470005 to the left:

BB4WA30M to the right:



Zooming in and checking CATZOC we can see the AA cell has 1 M_QUAL area with CATZOC =U and the BB cell has 4 different M_QUAL areas with CATZOC =A1, B and U:

