

7th SAIHC INT CHART COORDINATION WORKING GROUP (ICCWG)

Eden Island, Seychelles, 28th - 30th August 2018

Report on the Current Status of Overlaps in the SAIHC Region H as at 31 December 2018

Submitted by:	Chair, SAIHC ICCWG
Related documents:	Minutes of the SAIHC ICCWG 7 - Action Item no. 14
Related Projects:	N/A

Chair:	Alfons VAN CRAEYNEST, SA
Vice-Chair:	Tim Lewis, UK
Secretary:	Su Marks, UK
Membership:	France, Mauritius, Mozambique, Norway, Republic of South Africa, Seychelles, and United Kingdom.
Associate Members:	Angola, Comores, India, Kenya, Madagascar, Malawi, Namibia, Portugal and Tanzania.

Meetings held during the reporting period

1. WENDWG-8, 20 – 22 March 2018, Buenos Aires, Argentina
2. SAIHC-15 & ICCWG-7, 28 – 30 August 2018, Eden Island, Seychelles

Background

1. The region covered by SAIHC is currently served by 263 ENC cells produced mainly by France, Portugal, South Africa, India and UK.
2. Small scale coverage (smaller than 1:350,000) covers the entire SAIHC area. A series between 1:350,000 and 1 million scale covers the entire coastline between Angola and Kenya. A further series between 3.5 million and 10 million also covers the surrounding open oceans.
3. Using the WEND criteria, a number of overlap issues have been identified using the IC-ENC and PRIMAR Overlap Reports.
4. The RHC for the region recognises the importance and responsibility in taking the necessary action in order to eliminate these overlaps to comply with IHO Resolution 1/2018 and has taken a proactive approach to resolve these overlaps.
5. The table below summarises the current status and overall risk to navigation based on the overlap reports as a first step. There was a total of 9 instances of overlapping ENCs

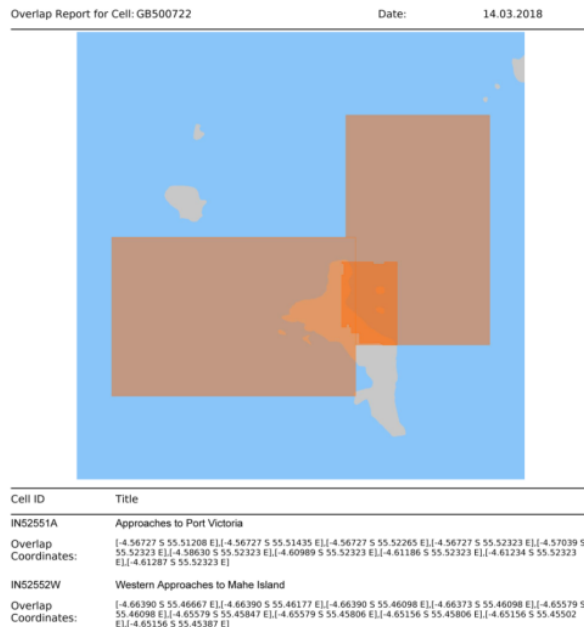
during 2018 impacting 5 Usage Bands: UB5 x 3, UB3 x 1, UB2 x 1, UB1 x 3, of which 3 were resolved.

STATUS	RENC Membership	RHC	ENC 1	ENC 2	Usage Band	Overall Severity of Risk
LIVE	IC-ENC - PRIMAR	SAIHC	GB500722	IN52551A	5	MEDIUM
				IN52552W		MEDIUM
LIVE	IC-ENC - PRIMAR	SAIHC	GB502758	IN52510B	5	Under assessment
				IN52511A		Under assessment
LIVE	IC-ENC - PRIMAR	SAIHC	GB54232A	IN52520A	5	Under assessment
LIVE	IC-ENC	SAIHC/HCA	RU1A2K00	AU160060	1	LOW
LIVE	IC-ENC - PRIMAR	SAIHC	ZA200020	ZA200030	2	LOW
RESOLVED	IC-ENC	SAIHC	ZA1N0010	GB104203	1	-
RESOLVED	IC-ENC	SAIHC	ZA100030	GB104701	1	-
ACCEPTED	IC-ENC	SAIHC	ZA300120	GB302930	3	ACCEPTED

Overlapping ENCs identified within SAIHC Region H

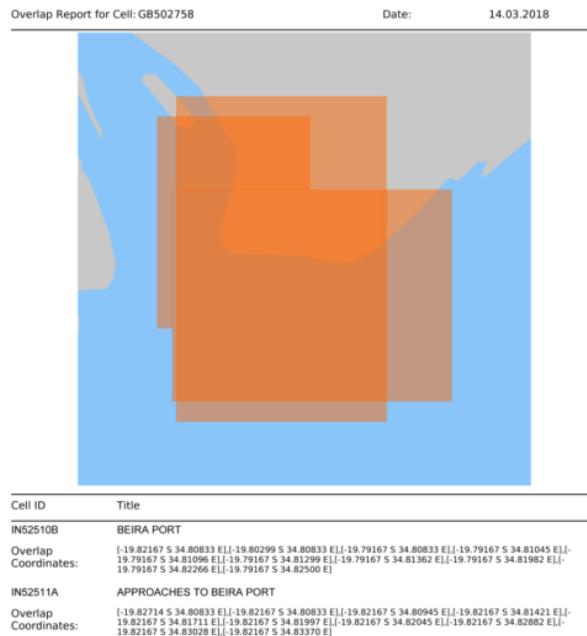
6. Significant overlap exists between IN and GB. Clipping has been agreed upon between the nations in order to resolve the overlap.

Seychelles: Overlap IN52551A (Approaches to Port Victoria) / IN52552W (Western Approaches to Mahe Island) and GB500722 (Port Victoria and Approaches)



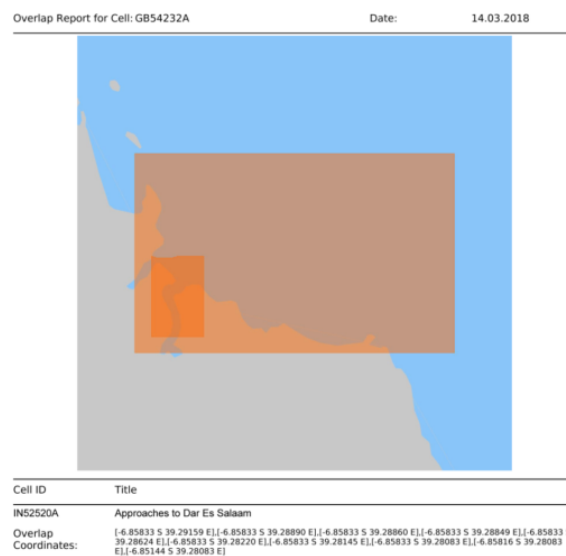
7. Significant overlap exists between IN and GB. IN has agreed to withdraw ENC's in the overlapping area.

Mozambique: Overlap IN52510B (Beira Port) / IN52511A (Approaches to Beira Port) and GB502758 (Porto da Beira)



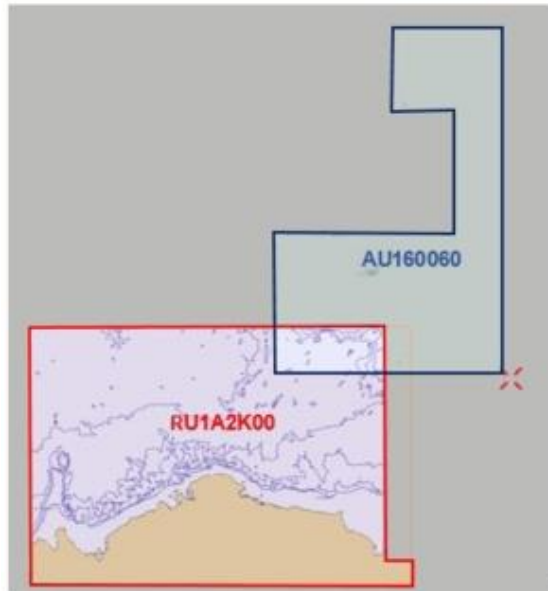
8. Significant overlap exists between IN and GB. Clipping has been agreed upon between the nations in order to resolve the overlap.

Tanzania: Overlap IN52520A (Approaches to Dar es Salaam) and GB54232A (Dar es Salaam)



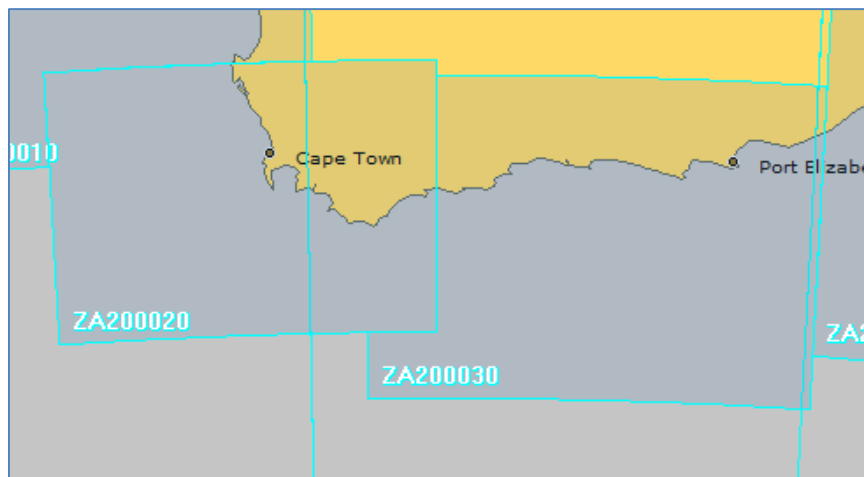
9. The RHC for region H has brought the overlap of cells RU1A2K00 and AU160060 to the attention of the Producer Member States. The overlap continues to remain unresolved.

STATUS	RENC Membership	RHC	ENC 1	ENC 2	Usage Band	Overall Severity of Risk
LIVE	IC-ENC	SAIHC/HCA	RU1A2K00	AU160060	1	LOW



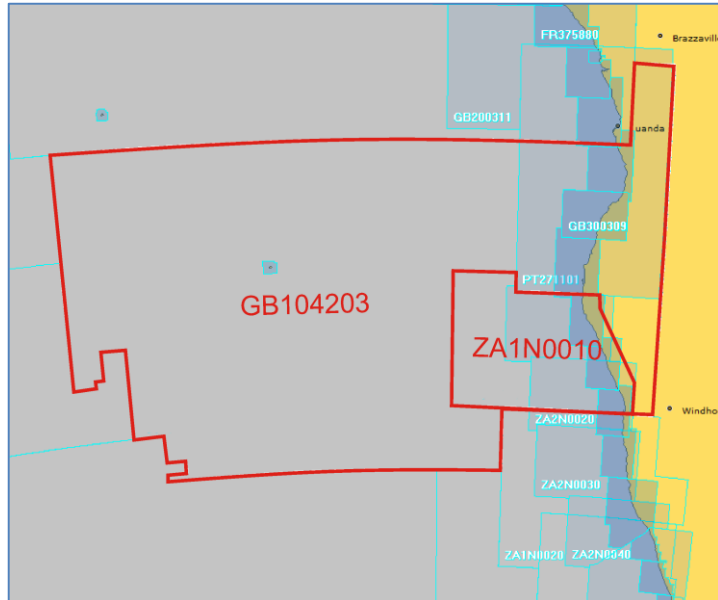
10. South Africa is in the process of producing new editions of cells ZA200020 and ZA200030. The overlap will be resolved within the one-year 'clock' time scale.

STATUS	RENC Membership	RHC	ENC 1	ENC 2	Usage Band	Overall Severity of Risk
LIVE	IC-ENC - PRIMAR	SAIHC	ZA200020	ZA200030	2	LOW



11. The overlap between ZA1N0010 and GB104203 has been resolved.

STATUS	RENC Membership	RHC	ENC 1	ENC 2	Usage Band	Overall Severity of Risk
RESOLVED	IC-ENC	SAIHC	ZA1N0010	GB104203	1	RESOLVED



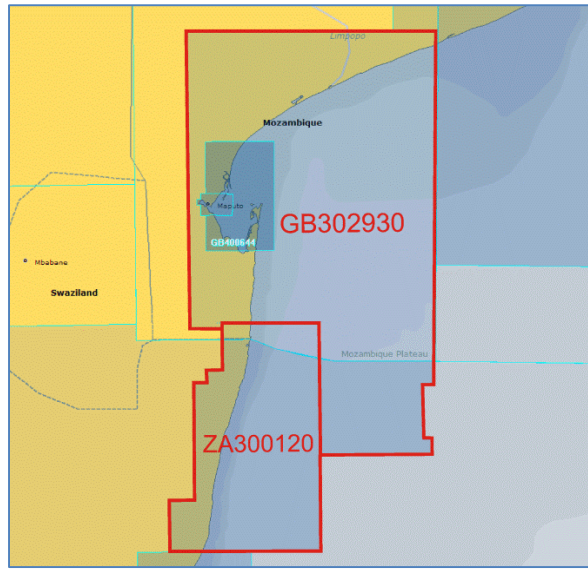
12. The overlap between ZA100030 and GB104701 has been resolved.

STATUS	RENC Membership	RHC	ENC 1	ENC 2	Usage Band	Overall Severity of Risk
RESOLVED	IC-ENC - PRIMAR	SAIHC	ZA100030	GB104701	1	RESOLVED



13. Overlap between ZA300120 and GB302930 has been assessed and classified as acceptable as it is on land.

STATUS	RENC Membership	RHC	ENC 1	ENC 2	Usage Band	Overall Severity of Risk
ACCEPTED	IC-ENC - PRIMAR	SAIHC	ZA300120	GB302930	3	ACCEPTED



Action requested of WENDWG Chair / IHO Secretariat

WENDWG Chair and IHO Secretariat to note the report from SAIHC to the IRCC Chair.