

SAIHC ENC COVERAGE REPORT

The region covered by SAIHC is currently served by approximately 140 ENC cells produced by France, Portugal, South Africa, and UK.

Small scale coverage (smaller than 1:350,000) covers the entire SAIHC area. A series between 1:350,000 and 1 million scale covers the entire coastline between Angola and Kenya (see figure 1 below). A further series between 3.5 million and 10 million also covers the surrounding open oceans (see figure 2 below).

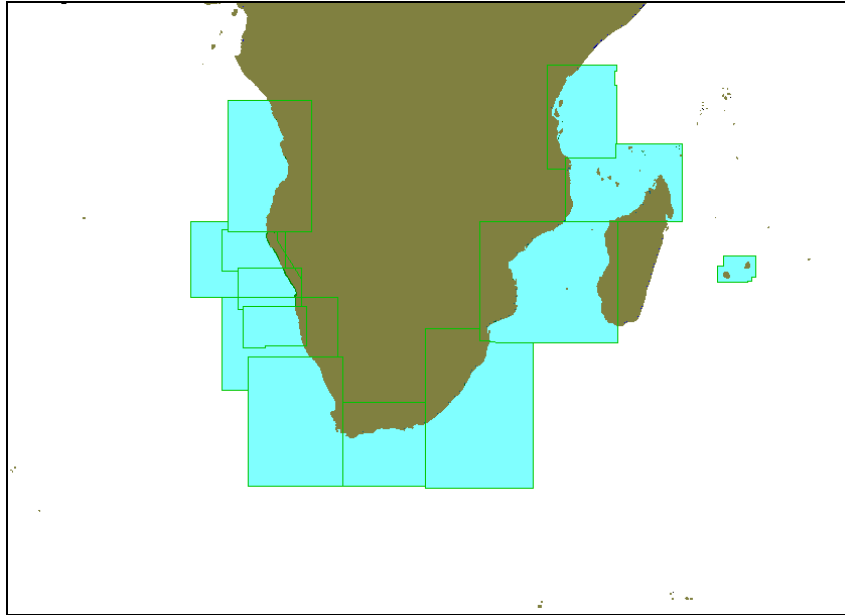


Figure 1: 1:350,000 – 1:700,000 coverage

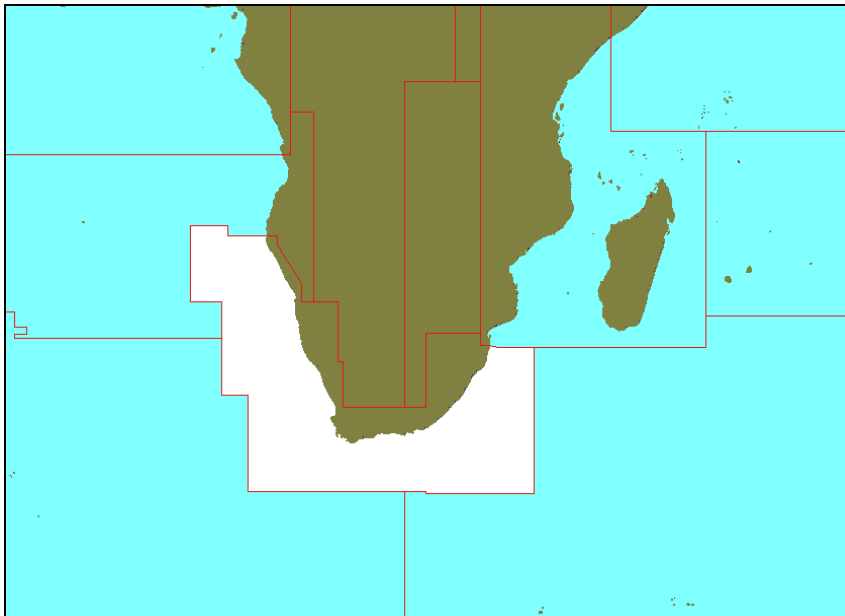


Figure 2: 1:3,500,000 – 1:10,000,000 coverage

Medium scale coastal coverage also exists, and covers the coastline of mainland Africa from the northern border of Namibia round to Mozambique; the northern coastline of Tanzania; the entire Kenyan coastline; the Seychelles; Réunion Island; Mauritius; and Rodriguez Island (see figure 3 below). However, coastal coverage is missing for Angola, most of Madagascar, and the border region between Mozambique and Tanzania.

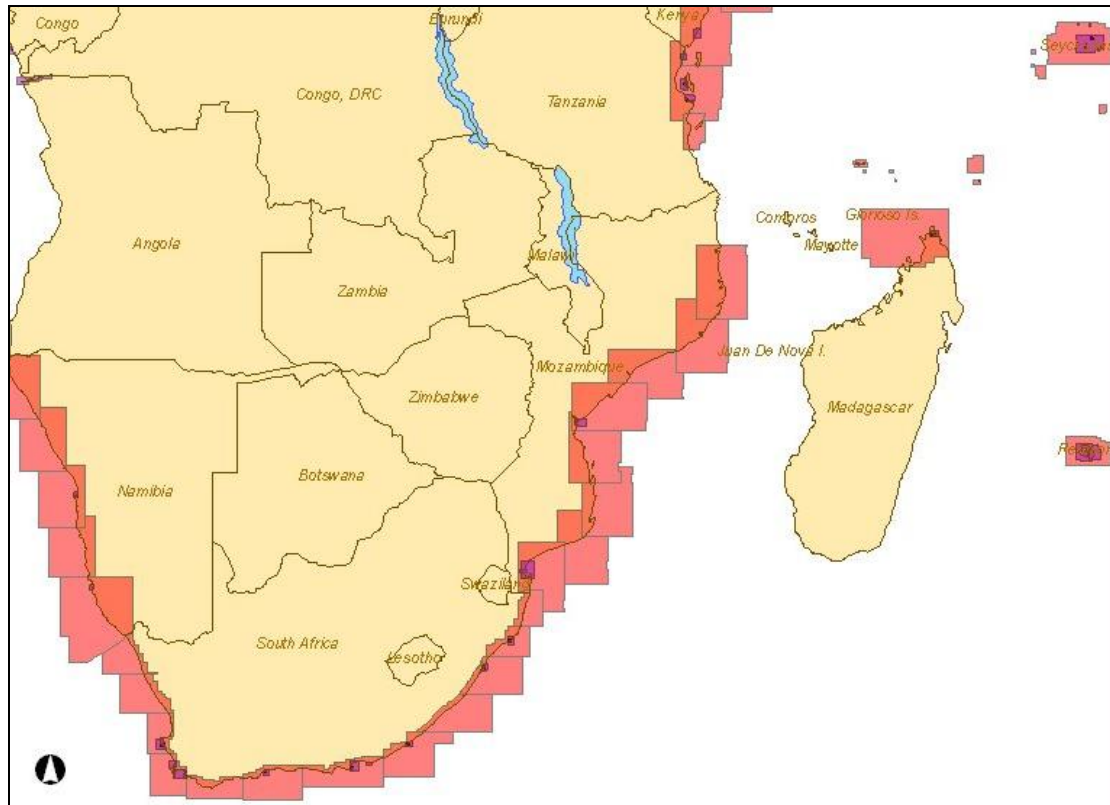


Figure 3: Medium and Large Scale Coverage

Larger scale approach and harbour coverage of many of the ports and bays also exists, and includes the following:

Namibia:

- Walvis Bay
- Lüderitz

South Africa:

- Saldanha Bay
- Table Bay (Cape Town)
- False Bay (Simonstown)
- Mosselbaai
- Port Elizabeth
- Nqura
- Bird Island Passage
- East London
- Durban
- Richards Bay

Mozambique:

- Maputo
- Beira

Tanzania:

- Dar Es Salaam
- Zanzibar Harbour
- Tanga (approach scale only)

Kenya:

- Mombasa (approach scale only)

Seychelles:

- Mahe Praslin and adjacent islands
- Ile Denis
- Ile aux Vaches
- Bancs Africains
- D'Arros and Saint Joseph Islands
- Cosmoledo Group
- Assumption
- Astove

Madagascar:

- Baie de Diego Suarez
- Passe d'Orongea
- Port de la Nievre

Réunion Island:

- Port Réunion (East and West Harbour)
- Saint-Gilles les Bains harbour

Mauritius:

- Port Louis
- Grande Riviere Noire Bay

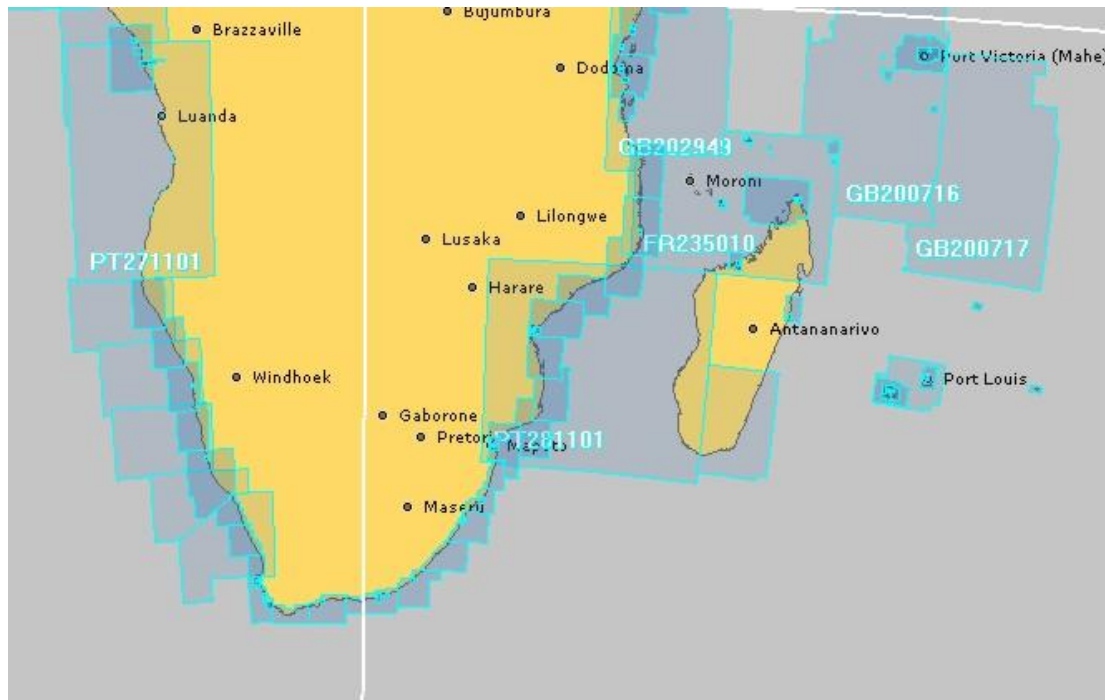


Figure 4: Admiralty Digital Catalogue

Additional coverage is also available from UKHO within the Admiralty Vector Chart Service (AVCS). This includes large scale coverage of the main Angolan ports:

- Luanda
- Amboim
- Gunza-Kabolo (Novo Redondo)
- Lobito
- Cuio
- Santa Marta
- Alexandre

However, without supporting medium scale coverage along the Angolan coastline, there is a large scale separation between these ENC cells and the 1:700,000 general scale ENC which is likely to make it difficult to make a smooth transition on most ECDIS.

The AVCS service also includes larger harbour scale coverage of the ports of Tanga and Mombasa; coastal and approach scale coverage of Baie de Bombetoke; and coastal coverage between Ile aux Nattes and Tamatave.