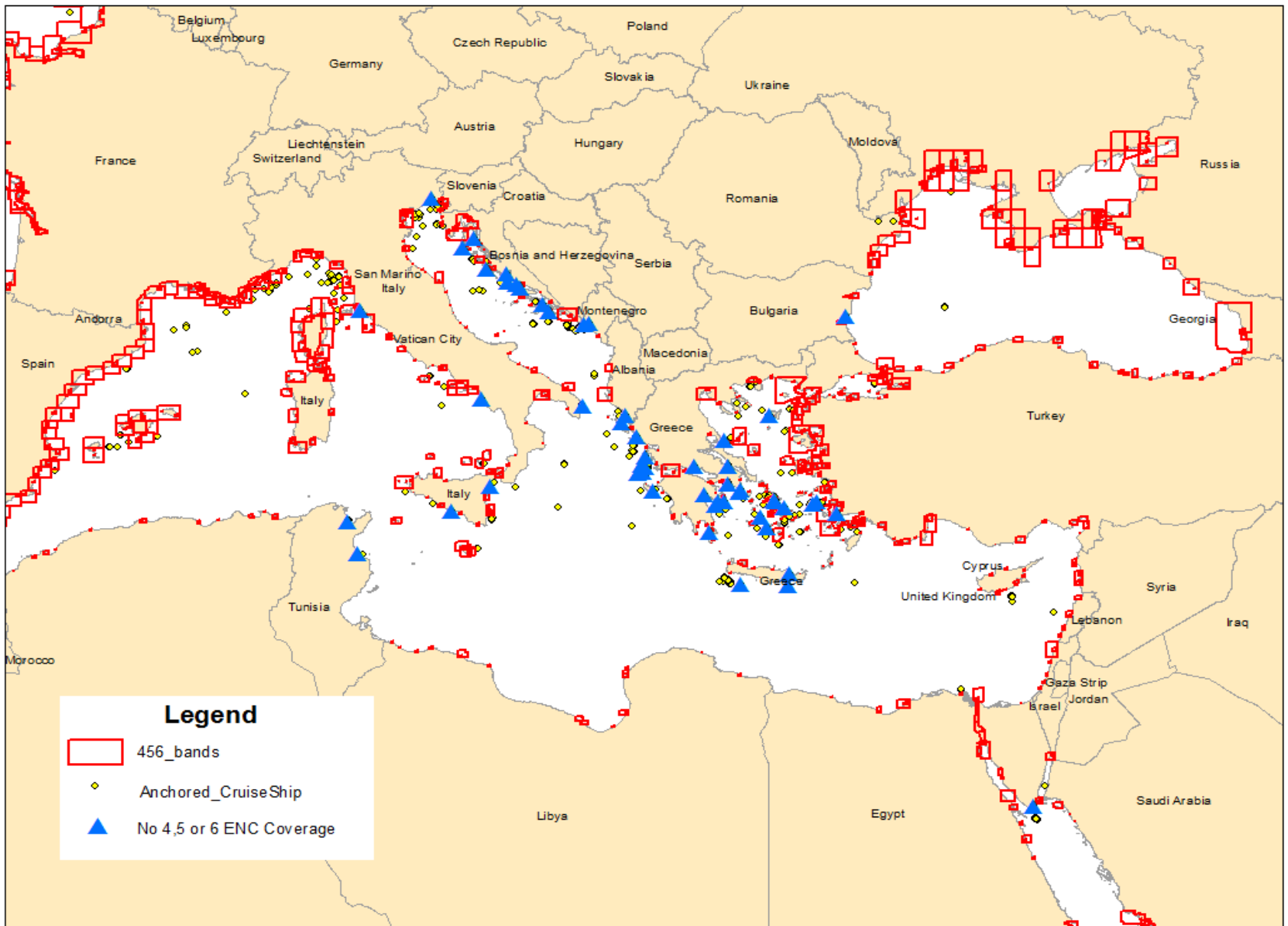


ENC Coverage for Cruise Ships in the Mediterranean Sea - ENC 4, 5 and 6

NOAA – IC-ENC

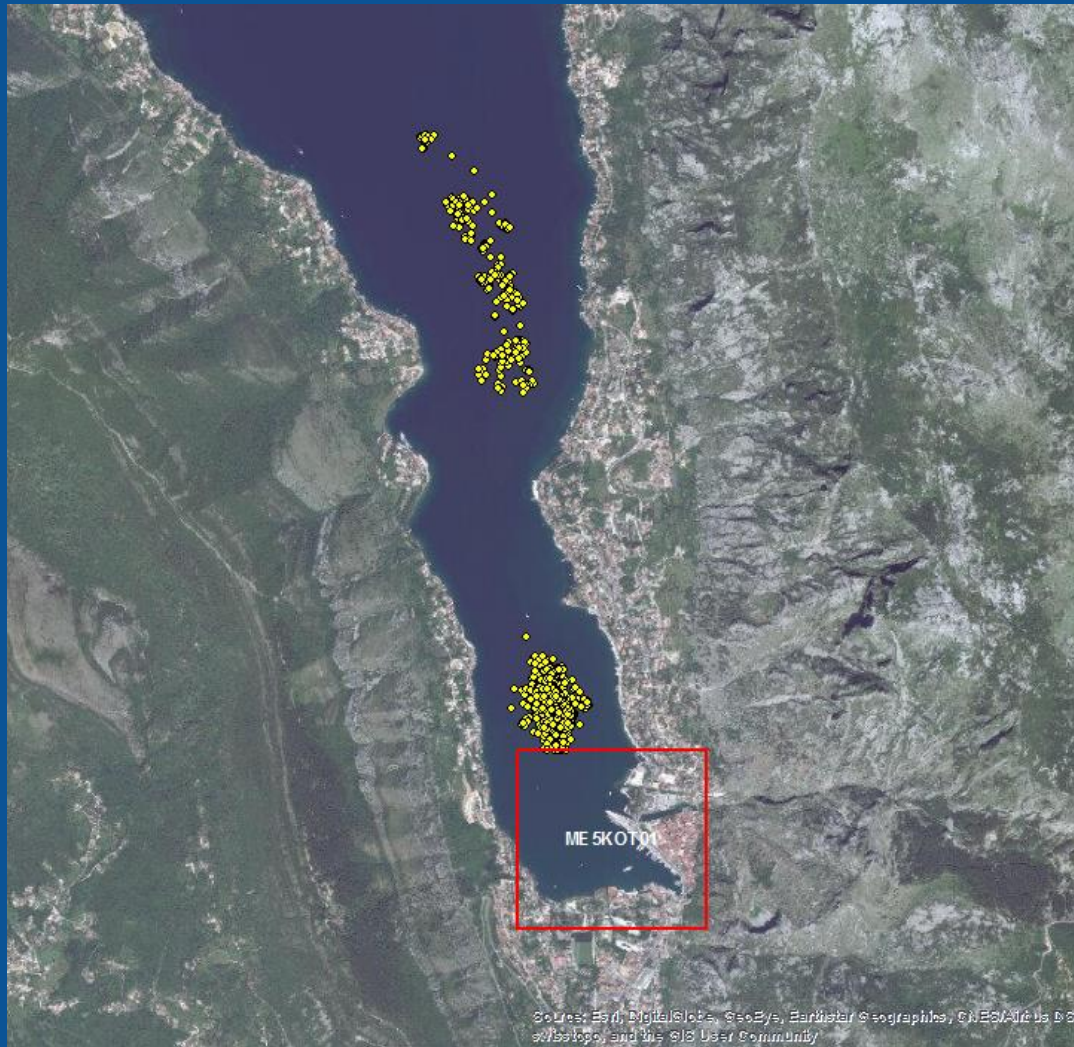
- Done in partnership with IC-ENC
- Local knowledge supersedes desktop research and QC is still underway
- Satellite AIS data obtained for Mediterranean Sea
- AIS data filtered for anchored and moored cruise ships
- AIS data clipped to include data only outside ENC 4, 5 and 6 limits
- Data analyzed for lack of ENC coverage where cruise ships anchor



Sali, Croatia



Kotor, Montenegro



Folegandros, Greece



No ENC band 4, 5 or 6
coverage in vicinity

Bodrum, Turkey



<http://www.iho-machc.org/miccenc/index.html>

