



12th Meeting of the WENDWG

Report of the Eastern Atlantic Hydrographic Commission to the WENDWG

**16th Eastern Atlantic Hydrographic Commission Plenary (EAtHC16)
29th of September to 1st of October 2021 – Hybrid (Lisbon, PT)**

Agenda Item 5

WENDWG12, IHO Secretariat, Monaco - Hybrid Event, 22 – 24 February 2022

**IHO**

Situation of the region G ENC Chart Scheme

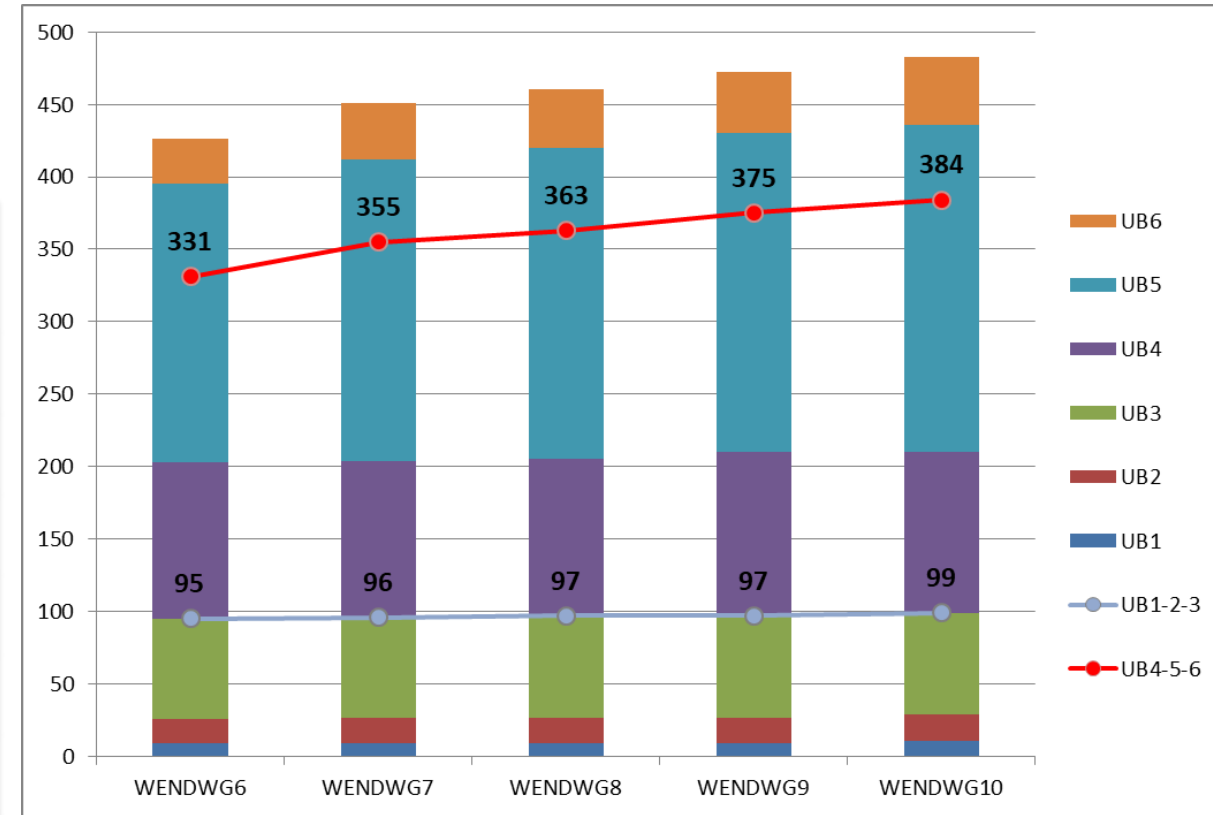
Status of the ENC*s*

International
Hydrographic
Organization

Region G	WEND-6	WEND-7	WEND-8	WEND-9	WEND-10
UB1	9	9	9	9	11
UB2	17	18	18	18	18
UB3	69	69	70	70	70
UB4	108	108	108	113	111
UB5	192	208	215	220	226
UB6	31	39	40	42	47
Total	426	451	460	472	483

The number of ENC*s* available in the region continues to increase but the increase is slowing down:

- certain maturity of the scheme
- difficulty to produce the remaining ENC*s*



Number of UB1-2-3-4 ~ stable in the last 3 years

UB4 ↗ 3% in the last 3 years (previously 5%)

UB5 ↗ 9% in the last 3 years (previously 15%)

UB6 ↗ 21% in the last 3 years (previously 35%)



IHO

Development of the region G ENC Chart Scheme

International
Hydrographic
Organization

Implementation of an ENC Scheme for the region – Way forward

Part A: Section 200 of S-11 provides guidance for the preparation and maintenance of ENC schemes, similar to what is done for INT charts schemes.

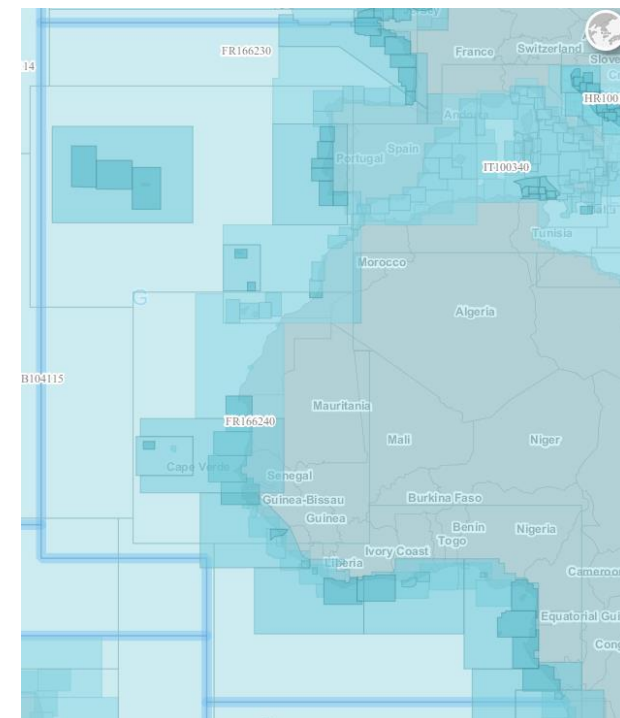
INToGIS Phase II extends the visualization / management of INT charts scheme to ENCs.

EAtHC16 Recommendation 8: To implement the S-57 ENC scheme via INTToGIS and to maintain it with planned and produced ENCs (deadline for implementation: December 2022).

EAtHC16 (ICC) Action 7: Regional G ICCWG to validate ENC schemes for UB1/2/3 and report back to the IHO SECRETARIAT. RCC to study with IHO Secretariat the possibility to copy the ENC catalogue in the ENC scheme.

EAtHC16 (ICC) Action 8: Specify how to manage ENC schemes (proposals for new cells, scheduled cells) with INTToGIS II.

EAtHC16 (ICC) Action 9: ENC producers to enter their ENC projects via the "manager" interface of the INTToGIS II portal.



ENCs - Catalogue ver Default

<input checked="" type="checkbox"/>	Overview	<input checked="" type="checkbox"/> 50%	T
<input checked="" type="checkbox"/>	General	<input checked="" type="checkbox"/> 50%	T
<input checked="" type="checkbox"/>	Coastal	<input checked="" type="checkbox"/> 50%	T
<input type="checkbox"/>	Approach	<input checked="" type="checkbox"/> 50%	T
<input type="checkbox"/>	Harbour	<input checked="" type="checkbox"/> 50%	T
<input type="checkbox"/>	Berthing	<input checked="" type="checkbox"/> 50%	T



IHO

INToGIS – Useful layers

Port Index

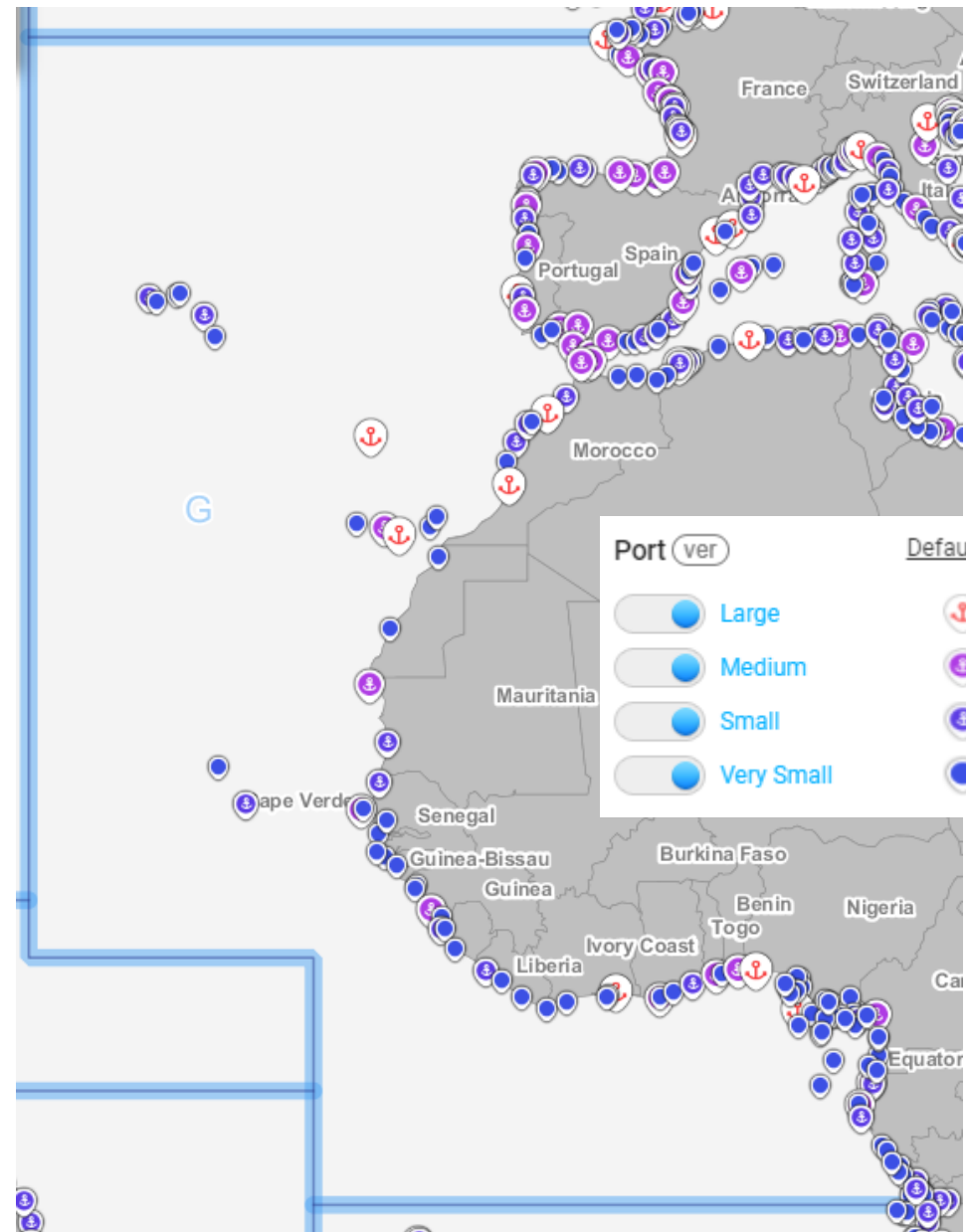
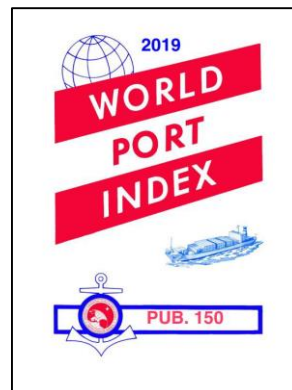
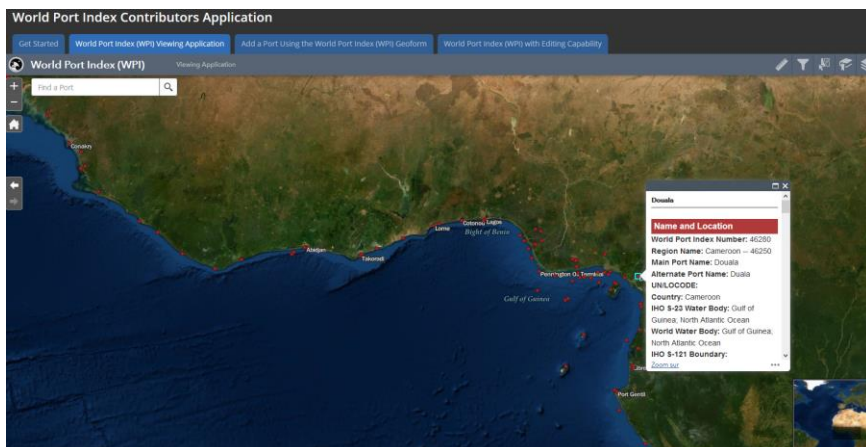
Available on INToGIS without logging

Source : World Port Index (Pub. 150 – NGA)

<https://msi.nga.mil/Publications/WPI>

Access to the direct link to update port information or to add a port :

<https://nga.maps.arcgis.com/apps/MapSeries/index.html?appid=f9515d53e3e24ae7919f02eb8f554c96>





IHO

INToGIS – Useful layers

International
Hydrographic
Organization

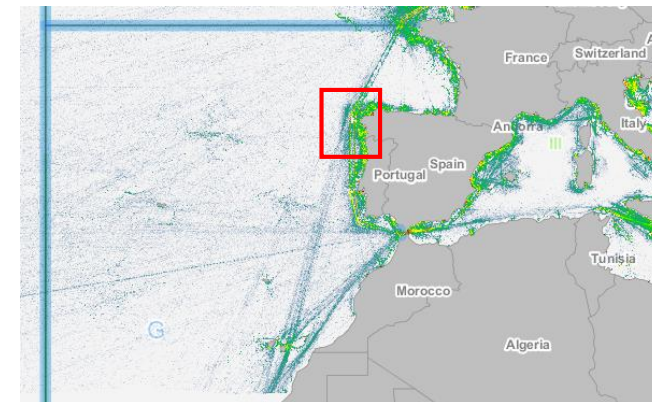
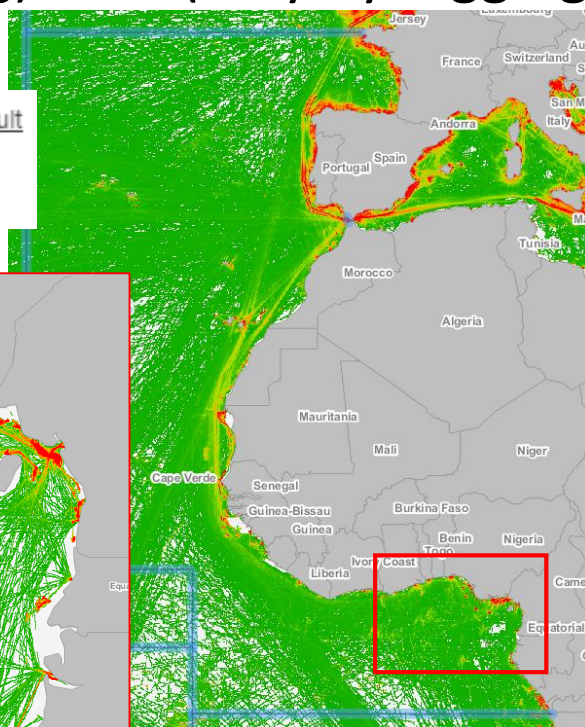
Traffic Density

2 layers available on INToGIS for EAtHC Region :
OGC (without logging) + EU (only by logging)

IHO_OGC

Default

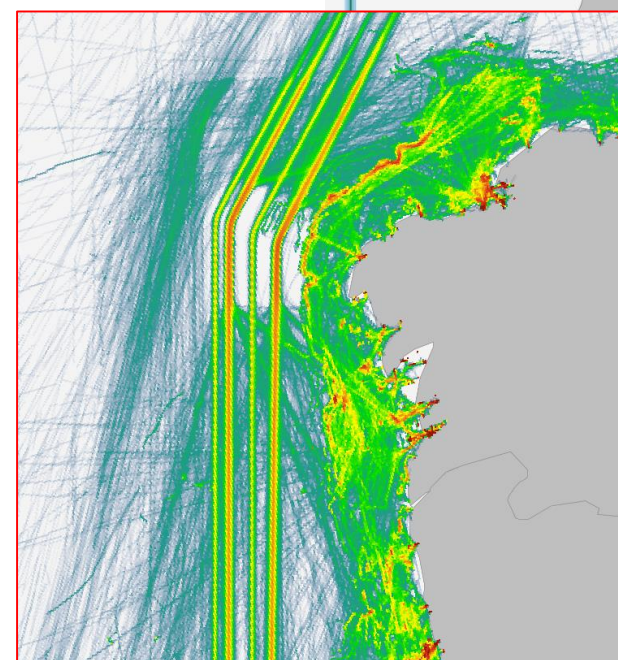
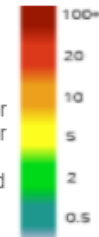
☒ TrafficDensity



TrafficDensity(EU)

Default

- ☒ All
- ☐ Cargo
- ☐ Dredging or Underwater ops
- ☐ High Speed Craft
- ☐ Fishing
- ☐ Military and Law Enforcement
- ☐ Passenger
- ☐ Pleasure Craft
- ☐ Sailing
- ☐ Service
- ☐ Tanker
- ☐ Tug and Towing
- ☐ Other
- ☐ Unknown





IHO

S-100 Development

International
Hydrographic
Organization

EAtHC sees the potential options for HOs in the production of S-101 ENC's in conjunction with S-57 as a very important topic.

The parallel production of S-57 and S-101 is indeed difficult to envisage for the HOs because of the resources required.

The use of a third party to produce one of the two coverages (the S-101 one from S-57 or the S-57 one from S-101) still requires technical development.

EAtHC16 Recommendation 3: With the possible development of INTToGIS III to encompass S-100 services, EAtHC members are invited to consider the future role of the International Charting Coordinator for Region G.



IHO

Need for capacity Building for S-100

International
Hydrographic
Organization

Existing training for S-100 products were noted such as the training solutions proposed by the RENCs (For example PRIMAR's user interface and training portal were presented)

EAtHC16 Decision 26: EAtHC Member states to coordinate the efforts on the implementation of S-100 and promote the cooperation and exchange of experiences.

EAtHC16 Decision 27: EAtHC Member States agree to participate on IRCC WORKSHOP ON THE IHO STRATEGIC PLAN IOT contribute to SPI and develop the Analyses Gap.