



# 13<sup>th</sup> Meeting of the WENDWG

Report of the representative of  
South West Atlantic Hydrographic Commission (SWAtHC)

**Agenda Items 13-05.1Ag**

**NICKOLÁS ROSCHER**



WENDWG13, Aalborg, Denmark – 21 – 23 February 2023



IHO

# SWAtHC

International  
Hydrographic  
Organization

- **Members:** ARGENTINA, BRAZIL & URUGUAY
- **Associate Member:** PARAGUAY
- **Observer:** BOLIVIA

Members 

Associate Members 

Observers 





IHO

SWAtHC

International  
Hydrographic  
Organization

Of the total of 250 planned ENC's, 215 are ready and available. This represents 86% of the total planned ENC cells. This table is updated and englobes the last year.

Country	Planned ENC's	Available ENC's	Percentage
Brasil	119	104	87%
Argentina	67	63	94%
Uruguay	64	48	75%
TOTAL	250	215	86%

Table 1: Summary of planned and available ENC cells in the SWAtHC region.



IHO

International  
Hydrographic  
Organization



IHO

SWAtHC

International  
Hydrographic  
Organization

## **1-Overlapping issues ENC Coverage**

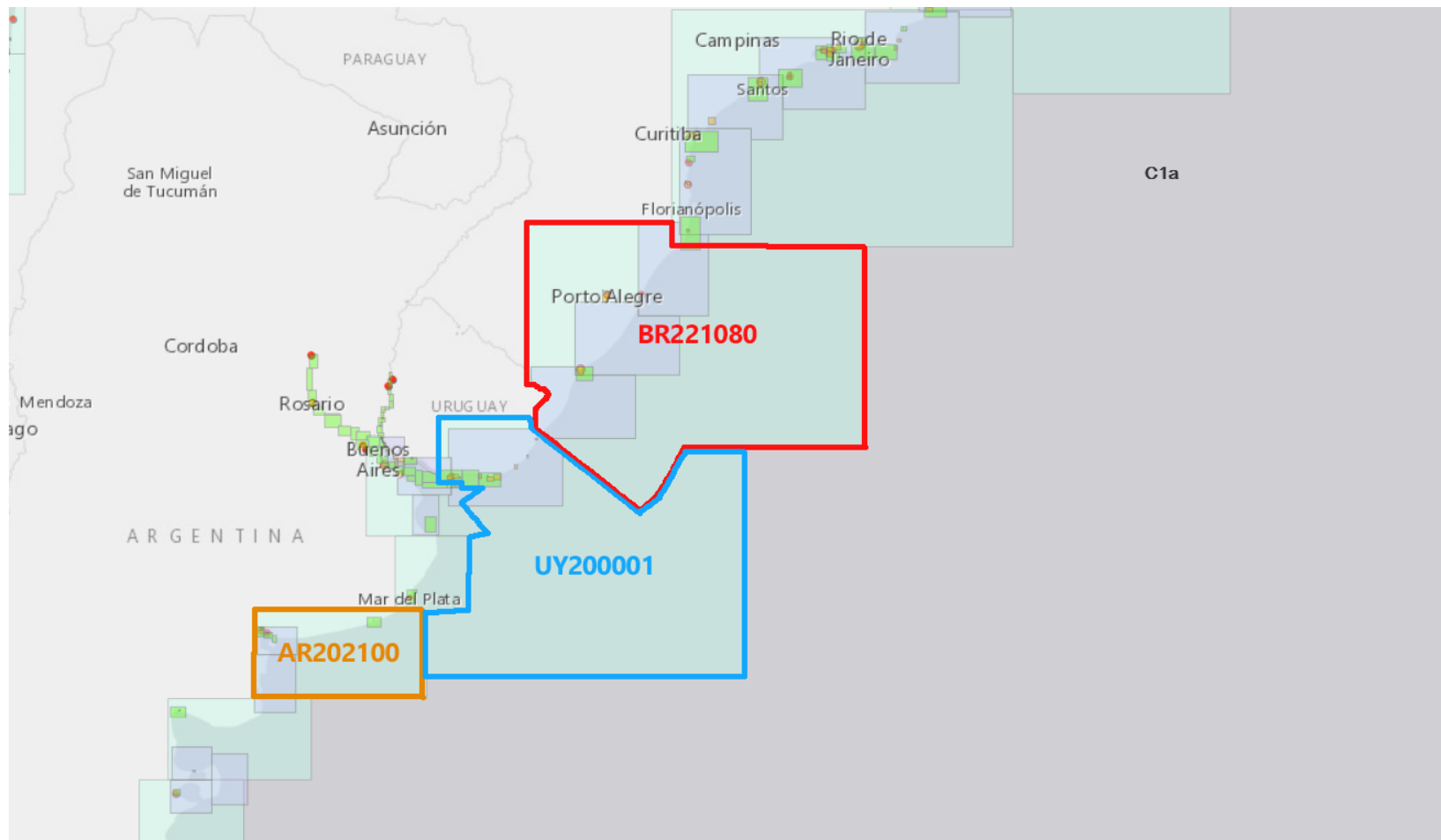
**There are currently no overlapping in the SWAtHC area ENC coverage.**



IHO

# SWAtHC

International  
Hydrographic  
Organization

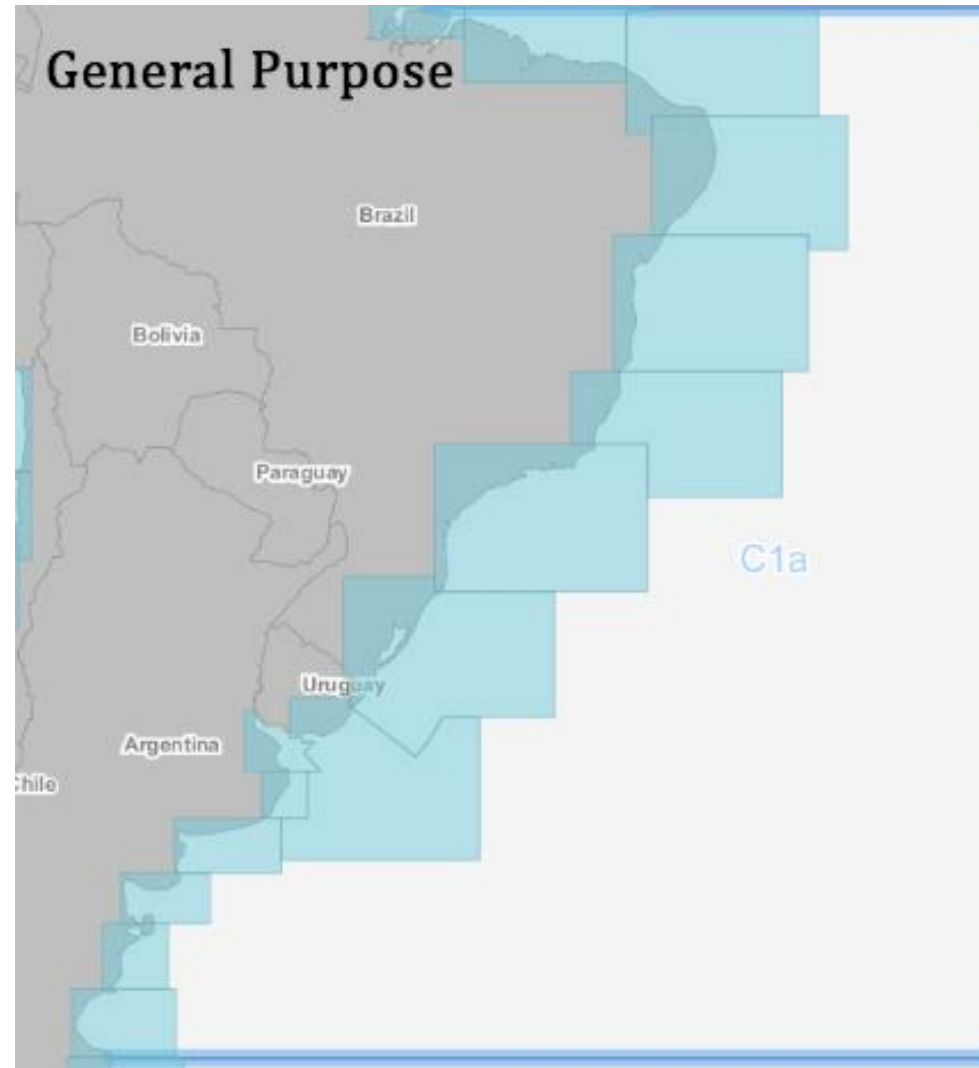




IHO

# SWAtHC

International  
Hydrographic  
Organization



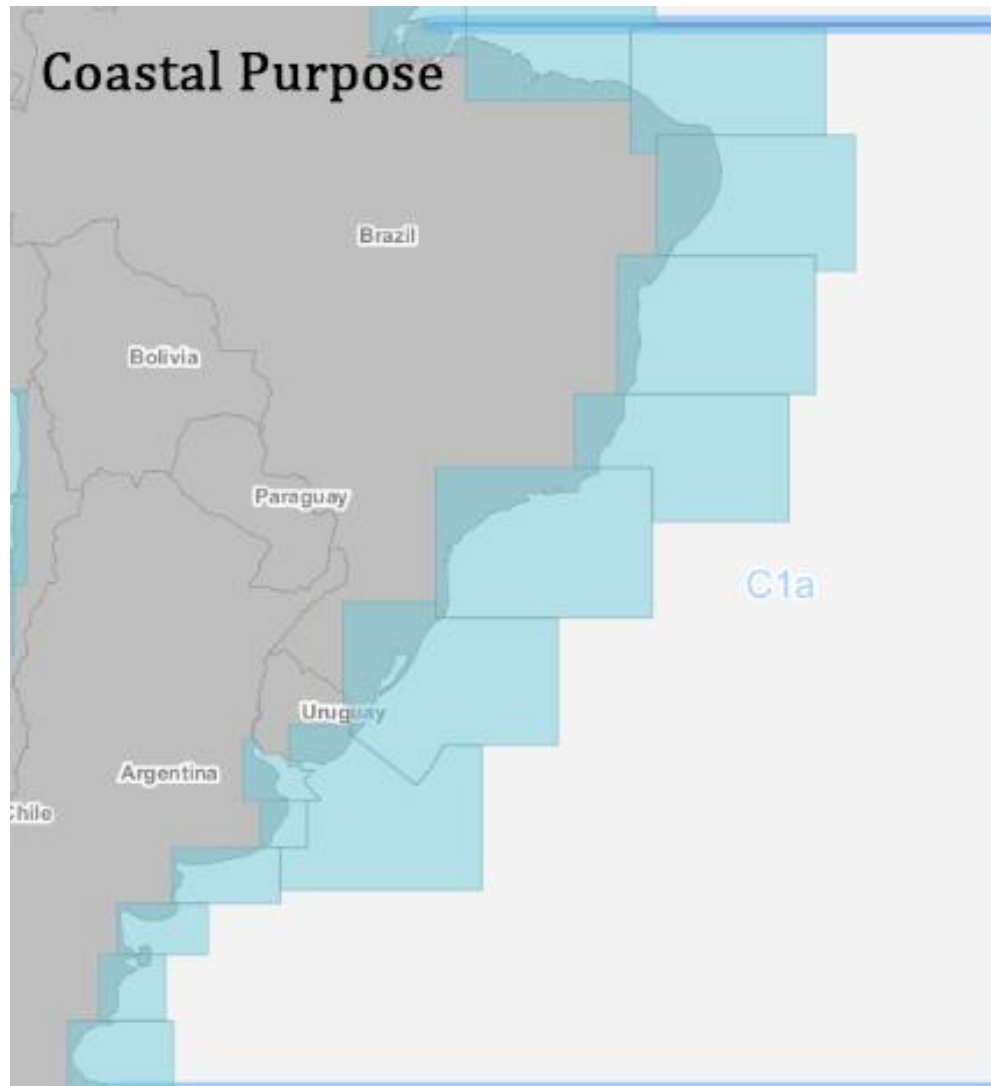
WENDWG-13



IHO

# SWAtHC

International  
Hydrographic  
Organization





IHO

# SWAtHC

International  
Hydrographic  
Organization



WENDWG-13





IHO

# SWAtHC

International  
Hydrographic  
Organization





IHO

# SWAtHC

International  
Hydrographic  
Organization



WENDWG-13



IHO

SWAtHC

International  
Hydrographic  
Organization

Regarding Brazil: Since 2022, the ENCs listed below have been produced to fulfill the coverage.

“Porto Alegre” - BR502133 (last update 2022-11-29)

The screenshot shows the IHO Web Catalogue interface. The header includes the IHO logo, 'IHO Web Catalogue', 'INT Charts & ENC Schemes', and 'Supported by KHOA'. A search bar is on the left. The map shows the coastal area of Porto Alegre, Brazil, with a yellow box highlighting the ENC BR502133. A pop-up window displays the following details:

Cell Name	BR502133
Cell Title	
INT Area	C1
Production Status	Produced
Producer	Brazil
Scale	12.000
First Edition Year	
Edition No	
Edition Date	

“Tramandaí” - BR502011 (last update 2022-09-21)

The screenshot shows the IHO Web Catalogue interface. The header includes the IHO logo, 'IHO Web Catalogue', 'INT Charts & ENC Schemes', and 'Supported by KHOA'. A search bar is on the left. The map shows the coastal area of Tramandaí, Brazil, with a yellow box highlighting the ENC BR502011. A pop-up window displays the following details:

Cell Name	BR502011
Cell Title	
INT Area	C1
Production Status	Produced
Producer	Brazil
Scale	12.000
First Edition Year	
Edition No	
Edition Date	



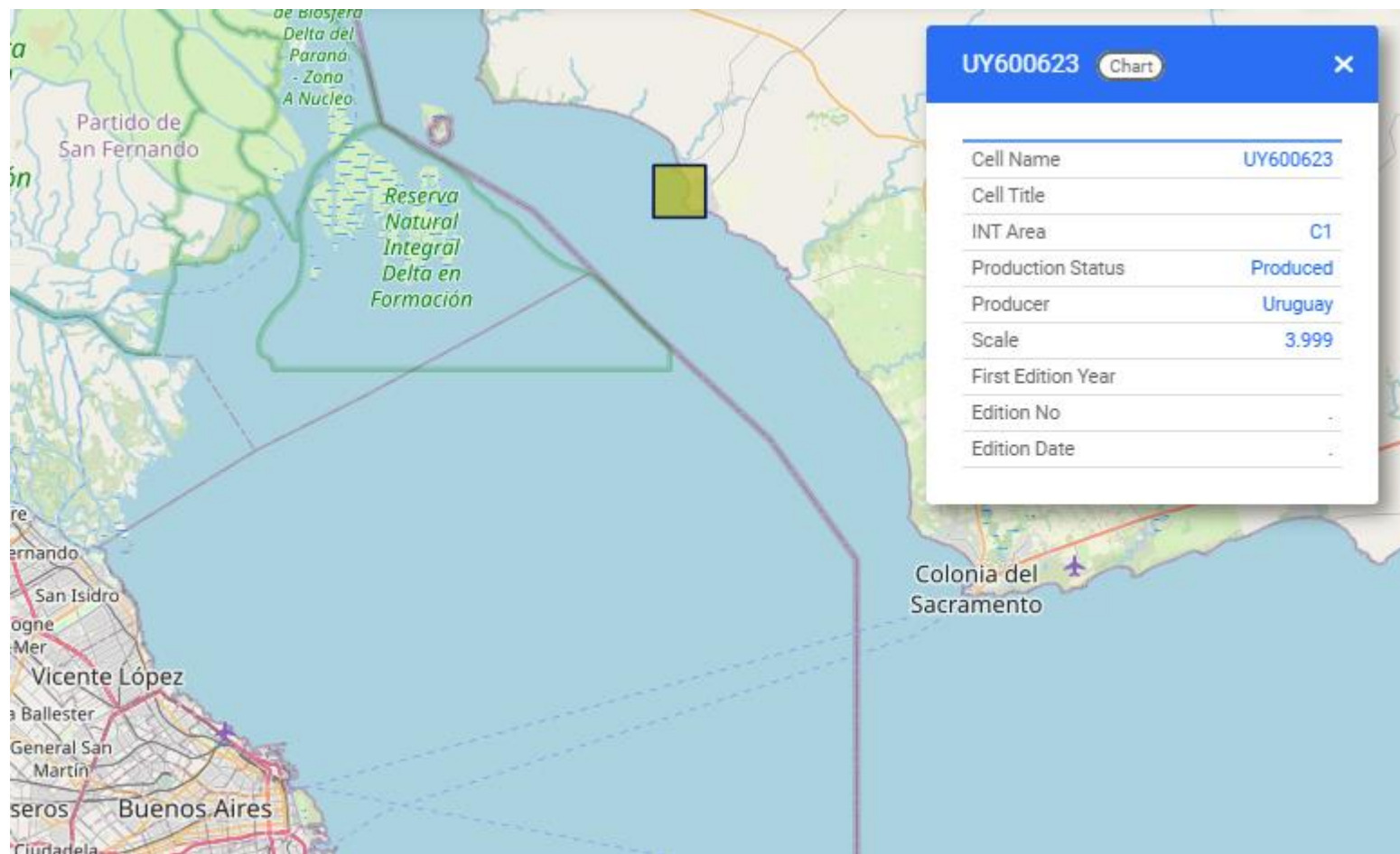
IHO

SWAtHC

International  
Hydrographic  
Organization

Regarding Uruguay:  
Since 2022, the following  
ENC have been produced to  
fulfill the coverage:

In Río de la Plata: UY600623  
“Acceso a la Terminal Punta  
Pereira y Punta Conchillas”.





IHO

# Problems or outstanding issues, Recommendations

International  
Hydrographic  
Organization

- List of Ports and Moorings

• Port Name	Country	
• CONCEPCION DEL URUGUAY	AR (P)	(In process of execution)
• TERMINAL PUNTA PEREIRA	UY	UY600623
• TRAMANDAI	BR	BR502011
• PORTO ALEGRE	BR	BR502133



IHO

SWAtHC

International  
Hydrographic  
Organization

- Summary:
  - ALL ENC overlaps HAVE BEEN RESOLVED.
  - The **S-100 Coordination** become a role of the Planning Committee of SWAtHC
  - New ENCs **BR5** and **UY6** were published to improve the coverage of some Ports.
  
- WENDWG is invited to note the report from SWAtHC