

## MSI Self Assessment NAVAREA XIV

Submitted by New Zealand

### SUMMARY

Executive Summary: *Overview of activities undertaken in NAVAREA XIV since WWNWS11*

Action to be taken: *See paragraph 12*

Related documents: *None*

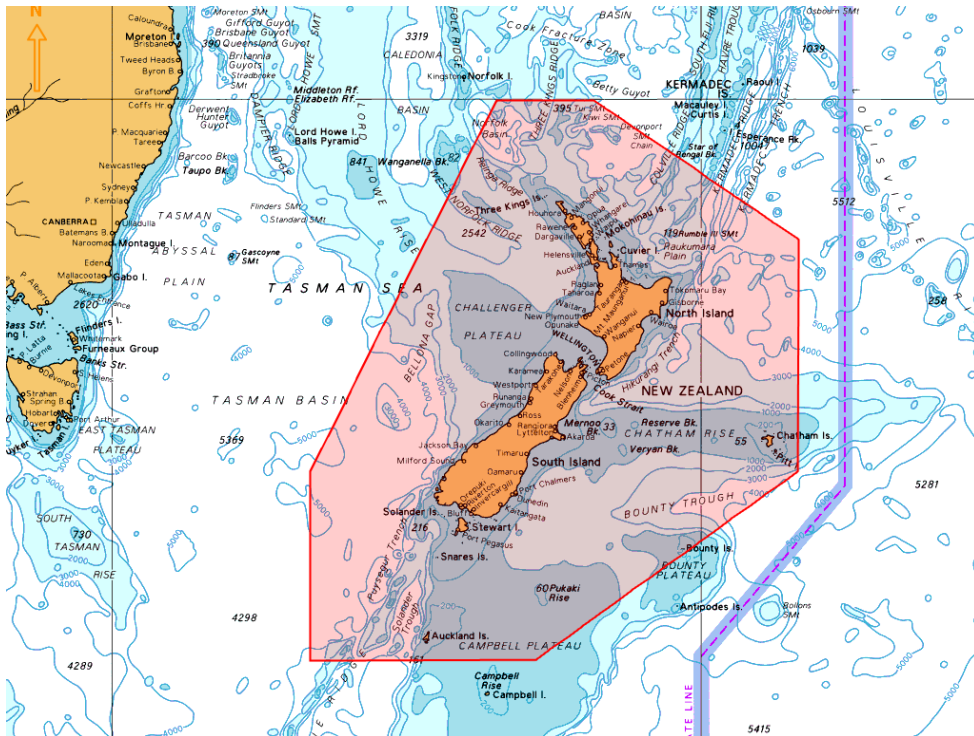
#### 1. Background:

##### 1.1 The limits of NAVAREA XIV are:

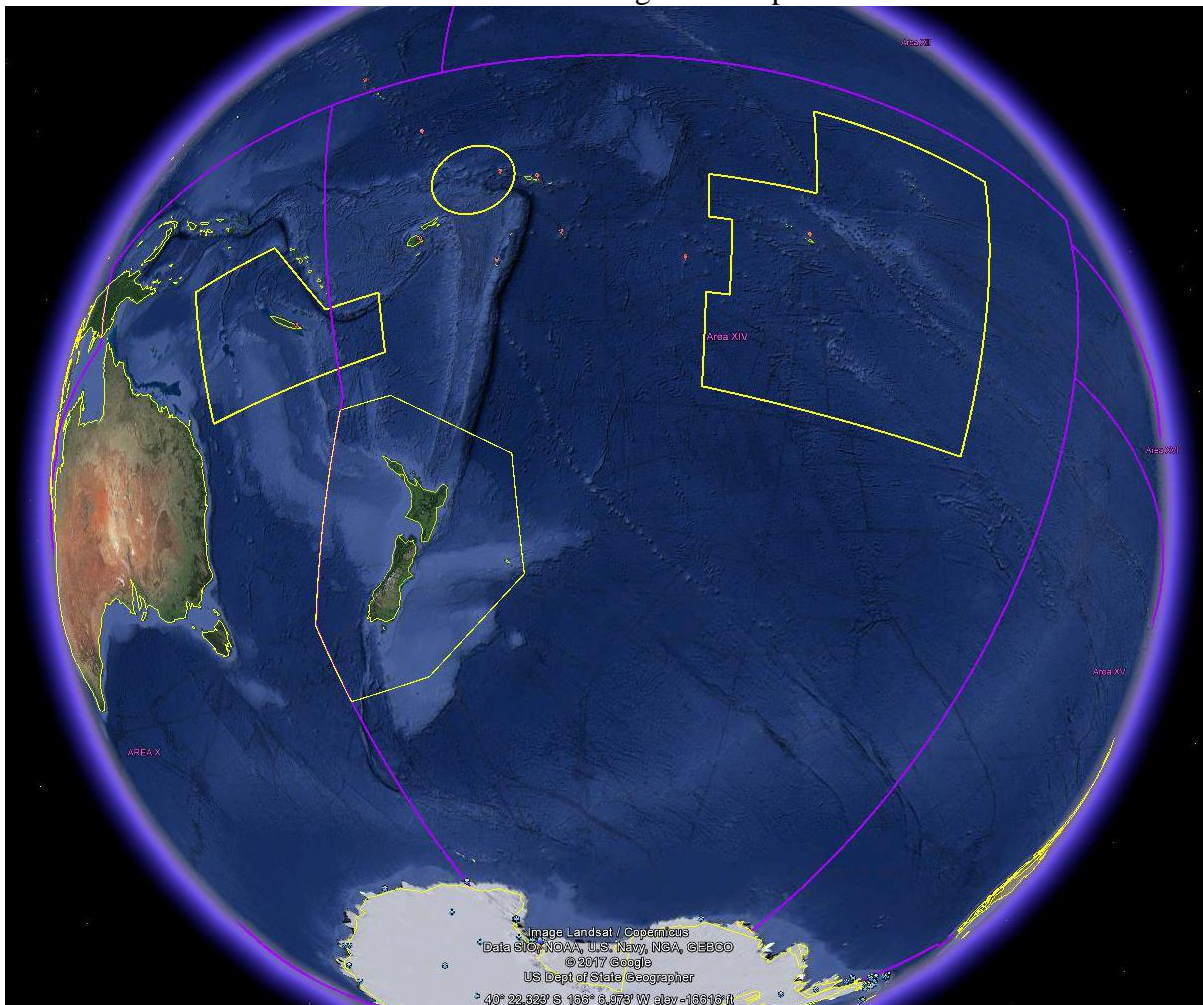
69° 37'S, 160° 00'E (Antarctic coast) to  
45° 00'S, 160° 00'E to  
29° 00'S, 170° 00'E to  
00° 00'N, 170° 00'E to  
00° 00'N, 120° 00'W to  
73° 50'S, 120° 00'W (Antarctic coast)



1.2 New Zealand Coastal Warning Area 'Z' is depicted below.



1.3 NAVAREA XIV with all Coastal Warning Areas depicted below.



1.4 NAVAREA XIV and New Zealand Coastal Warnings are broadcast through:

1.4.1 Taupo Maritime Radio ZLM (Radio Telephony) at the first scheduled time following receipt and then at the scheduled times as per ALRS Vol 3(2), 2017/2018 Edition whilst the warnings are in force or until they have been promulgated by other means; and

1.4.2 EGC SafetyNET II via the Pacific Ocean Region (POR) and Atlantic Ocean Region-West (AOR-W) satellites, through the Inmarsat Maritime Safety Servers for broadcast to Inmarsat C and Mini C via the Network Control Station (NCS) and to Fleet Safety via the Broadband Global Area Network Satellite Access Station (BGAN SAS). Warnings broadcast on receipt and scheduled at 0900 and 2100 UTC.

1.4.3 Broadcasts are monitored as follows:

1.4.3.1 Following every MSI broadcast - All broadcast transmissions are monitored via the SafetyNET II interface, which provides system confirmation of message status and text display of the message sent. Monitoring of broadcast reception via the POR satellite continues via the existing INM-C EGC receiver.

1.4.3.2 Once per month Quality Assurance Check - A ship in the eastern part of NAVAREA XIV, under the AOR-W footprint is identified via Satellite AIS (S-AIS), requested to confirm message reception and provide a copy of MSI received.

1.4.3.3 The Australian Maritime Safety Authority (AMSA) also assists New Zealand in monitoring repeat EGC transmissions via an EGC supervisory system.

1.5 New Caledonia broadcasts Coastal Warnings for Coastal Warning Areas N and D (Wallis & Futuna) via Inmarsat SafetyNET II (Inmarsat LES) at scheduled broadcast times 0140 and 1340 UTC, and 0030 and 1230 UTC respectively. Warnings are broadcast while in force or until promulgated by other means.

1.5.1 In addition to EGC, New Caledonia broadcasts warnings via VHF at four scheduled broadcasts per day, and publishes warnings on their website [www.mrcc.nc](http://www.mrcc.nc).

1.6 French Polynesia broadcasts Coastal Warnings for Coastal Warning Area R via Inmarsat SafetyNET II at scheduled broadcast times 0250 and 1450 UTC.

## 1.7 Operational Points of Contact for National Co-ordinators within the NAVAREA

COUNTRY	INSTITUTION	TELEPHONE	FACSIMILE	EMAIL
Cook Islands	Ministry of Transport	+682 74530		<a href="mailto:saungaki.rasmussen@cookislands.gov.ck">saungaki.rasmussen@cookislands.gov.ck</a>
French Polynesia	JRCC Tahiti	+689 40541616	+689 404 23915	<a href="mailto:contact@jrcc.pf">contact@jrcc.pf</a>
Fiji	Maritime Safety Authority Fiji	+679 331 5266	+679 331 3127	<a href="mailto:msi@msaf.com.fj">msi@msaf.com.fj</a> ; <a href="mailto:skumar@msaf.com.fj">skumar@msaf.com.fj</a>
Kiribati	Ministry of Information Communication Transport and Tourism Development	(W) +686 74026003 Ext 232 (M) +686 73022727		<a href="mailto:eritaia.tauro@mcttd.gov.ki">eritaia.tauro@mcttd.gov.ki</a>
New Caledonia	MRCC New Caledonia	+687 292121	+687 292 303	<a href="mailto:operations@mrcc.nc">operations@mrcc.nc</a>
New Zealand	RCCNZ	+64 4 577 8030	+64 4 577 8038	<a href="mailto:rccnz@maritimenz.govt.nz">rccnz@maritimenz.govt.nz</a>
Niue	Ministry of Transport	+683 888 6983		<a href="mailto:lynsey.talagi@mail.gov.nu">lynsey.talagi@mail.gov.nu</a>
Samoa	Ministry of Works, Transport & Infrastructure	(W) +685 22141 (M) +685 770 7794	+685 22671	<a href="mailto:hoe.viali@mwti.gov.ws">hoe.viali@mwti.gov.ws</a> <a href="mailto:anastacia.amoa@mwti.gov.ws">anastacia.amoa@mwti.gov.ws</a> <a href="mailto:tapaga.collins@mwti.gov.ws">tapaga.collins@mwti.gov.ws</a>
Tonga, Kingdom of	Ministry of Infrastructure, Marine & Ports Division	+676 22 555	+676 42 467	<a href="mailto:sioeli.fifita@moi.gov.to">sioeli.fifita@moi.gov.to</a> <a href="mailto:marineport@moi.gov.to">marineport@moi.gov.to</a>
Tuvalu		+688 20055		<a href="mailto:taasi.pittoi@gmail.com">taasi.pittoi@gmail.com</a>
Wallis & Futuna	MRCC New Caledonia	+687 292121	+687 292 303	<a href="mailto:operations@mrcc.nc">operations@mrcc.nc</a>

1.8 In an effort to improve communications and ensure contact details are correct, the NAVAREA XIV Coordinator conducts six monthly communications checks with the nine National Coordinators (outside of New Zealand). Since inception, the response rate has been 100%. The last communications check identified changes in contact details for one National Coordinator.

### 2. Comments:

2.1 The GMDSS Master Plan updated via GISIS as at August 2020.

2.2 Equipment and software used by New Zealand to monitor NAVAREA XIV Inmarsat EGC broadcasts are:

Equipment Type	Software Version	Date of Up-date
Sailor 6150 Mini-C	Firmware V1.07	
Thrane & Thrane easyMail	V2.02 Build 006	28/2/2013

2.3 Information received and reviewed.

### NAVAREA XIV

2017				2018				2019			
E-mail	Fax	Phone	Text	E-mail	Fax	Phone	Text	E-mail	Fax	Phone	Text
206	-	-	-	612	-	-	-	560	-	-	-

2.4 Warnings promulgated by Inmarsat EGC.

NAVAREA XIV

<b>2017</b>	<b>2018</b>	<b>2019</b>
145	190	161

NZ Coastal Warning Area 'Z'

<b>2017</b>	<b>2018</b>	<b>2019</b>
267	253	206

2.5 NAVAREA warnings identified as immediate priority.

<b>2017</b>		<b>2018</b>		<b>2019</b>	
Total	Average elapsed time	Total	Average elapsed time	Total	Average elapsed time
34	26 Mins	89	15 Mins	64	18 Mins

2.6 NAVAREA XIV holds a certificate of authorization from the IMO EGC Coordinating Panel.

2.7 Maritime New Zealand has signed service agreements with Iridium as a MSIP and RCC.

2.8 Since April 2020, Maritime New Zealand and the New Zealand research vessel *RV Tangaroa* have assisted Iridium with extensive pre-IOC development testing of MSI and SAR (ship-shore and shore-ship) services. Once developmental testing is complete and the Iridium software and firmware is stable (no further updates), Maritime New Zealand will issue the appropriate navigational warnings and commence IOC testing, likely during August 2020. FOC declaration will depend on IOC success.

2.9 Requests for list of in-force navigation warnings

<b>2017</b>		<b>2018</b>		<b>2019</b>	
Total	E-mail	Total	E-mail	Total	E-mail
17	17	68	68	30	30

3. NAVTEX Coverage:

3.1 New Zealand does not broadcast coastal warnings via NAVTEX. The maritime areas around New Zealand have been designated GMDSS Sea Area A3.

4. Operational Issues:

4.1 MSI Received from Coastal States within NAVAREA XIV

Coastal State/Country	Number of MSI messages	Topics/Subjects of messages	MSI Courses Attended
Cook Islands	3	Wreck, AtoNs	2010, 2014, 2016, 2018
Fiji	50	AtoN, Cable laying ops, Pipeline installations, Wrecks	2010, 2014, 2016, 2018
French Polynesia	36	Military exercises, Space debris, Drifting Hazard, Tow, AtoNs	2010, 2014, 2016, 2018
New Caledonia	16	Military exercises, FADs, Drifting Hazard, Grounding	2010, 2014, 2016, 2018
Niue	3	AtoNs	2016, 2018
Samoa	1	Cable Laying	2016, 2018
Tonga	4	Wreck, Volcanic Activity, Military exercises,	2016, 2018
Tuvalu	0		2016, 2018
Wallis & Futuna	Covered by New Caledonia		Covered by New Caledonia
Kiribati	2	Wreck, AtoNs	2016, 2018

4.2 In force warnings bulletins are issued.

4.3 NAVAREA XIV and NZ Coastal Warnings are broadcast until published in the fortnightly New Zealand Notices to Mariners, or until the subject is no longer a hazard.

4.4 The service to mariners provided by the NAVAREA XIV Coordinator was not impacted by COVID-19.

5. Quality Management Survey

NAVAREA	ISO 9001 -2008	Promulgate "In-Force" Bulletins	Promulgate "No-Warning" Messages	Monitor Broadcast	24/7 contact information provided	Promulgate two scheduled broadcasts	IMO Master Plan updated
XIV	NO	YES	YES	YES	YES	YES	YES

6. Contingency Planning

6.1 Technical

6.1.1 Maritime New Zealand (Kordia/Taupo Maritime Radio) uses the Inmarsat SafetyNET II system to broadcast Navigational Warnings and RescueNET to broadcast SAR Information. The versatility of using web portals, in addition to Kordia having back-up servers, reduces the risk of a New Zealand-based single point of failure. In the event of a total system failure at

Kordia, web access is available via RCC New Zealand which also has back-up servers and multiple redundant systems in place.

## 6.2 Physical

6.2.1 In the event of a building failure (fire, etc) RCC New Zealand has access to a remote Disaster Recovery site where the provision of WNWWS can continue.

## 6.3 Assistance to METAREA XIV

6.3.1 Inmarsat has made meteorological products available as a MSI Type through the SafetyNET II system for access by the NAVAREA XIV Coordinator. This allows the NAVAREA XIV Coordinator to provide contingency planning assistance to the METAREA XIV Coordinator.

## 6.4 Assistance to other National Coordinators in NAVAREA XIV

6.4.1 The NAVAREA XIV Coordinator has access, via SafetyNET II, to all Coastal Warning Areas within NAVAREA XIV and can, on request, broadcast navigational warnings on behalf of these National Coordinators.

## 7. Capacity Building:

7.1 In January 2020, Sunil Kumar of Maritime Safety Authority Fiji (MSAF) completed a 'Train the trainer' distance learning course. Through the online instructor-led course, Sunil learned the steps of the training process, from understanding learning studies and needs of others, through to structuring and delivering workshops. The training was put into practice with Sunil's participation in delivering the MSI For Managers workshop at SWPHC17.

7.2 Preceding the 17th meeting of the SWPHC (SWPHC17) in Wollongong, Australia during February 2020 the International Hydrographic Organization (IHO) Capacity Building Sub Committee (CBSC) funded participants from 14 Pacific Island nations to attend a 2-day workshop entitled Maritime Safety Information (MSI) for Managers and Disaster Framework for the South West Pacific Hydrographic Commission (SWPHC). The intention of the MSI for Managers component was to raise awareness of the importance, need and obligations of a country providing an MSI service and establishing a National Coordinator. The workshop was aimed at the managers of a National Coordinator. The NAVAREA XIV Coordinator led the presentations and discussions for the MSI for Managers Workshop, very ably assisted by the Fiji National Coordinator and representative from NAVAREA X.

7.3 In June 2020, the IHO Capacity Building Sub-Committee approved 2021 funding for a SWPHC CB submission which proposed convening a Maritime Safety Information (MSI) Regional Workshop in 2021. Fiji has been approached to host and August 2021 proposed as the date, however all arrangements are dependent upon travel restrictions.

8. Other Activities:

8.1 The NAVAREA XIV Coordinator attended the SWPHC17 meeting as an invited observer. To note:

- Mr Adam Greenland resigned as SWPHC CB Coordinator and was appointed SWPHC Chair.
- Mr Matthew Borbash, Deputy Hydrographer of the U.S. Navy was appointed SWPHC CB Coordinator.

8.2 Maritime New Zealand attended NCSR7 at IMO Headquarters in London, UK in January 2020 and the NAVAREA XIV Coordinator attended the subsequent IMO EGC Coordinating Panel and DRWG meetings.

8.3 The Maritime Safety Committee (MSC) – 102<sup>nd</sup> session has been indefinitely postponed. New Zealand submitted document MSC 102/16/5 commenting on document MSC 102/16 regarding the introduction of new recognized GMDSS mobile satellite service providers, supporting concerns regarding the increasing associated costs to Maritime safety information (MSI) providers, noting that these costs also apply to Search and rescue (SAR) information providers, and further noting additional resource and financial implications unless a new MSI monitoring model is adopted.

8.4 The NAVAREA XIV Coordinator is a member of the IHO S-124 Project Team and EGC-API Correspondence Group.

8.5 Since COVID19 New Zealand has undertaken no international travel.

9. NAVAREA Website:

NAVAREA XIV warnings in force: [www.maritimenz.govt.nz/navarea](http://www.maritimenz.govt.nz/navarea)

During 2019 the NAVAREA XIV web page received 27 864 page views.

10. NAVAREA Contact Information:

NAVAREA XIV Coordinator  
Maritime New Zealand  
RCCNZ  
41 Percy Cameron Street, Avalon Studios Level 1  
PO Box 30050  
LOWER HUTT 5040  
New Zealand  
Tel: +64 4 577 8030 (24 hours)  
FAX: +64 4 577 8038 (24 hours)  
E-mail [rccnz@maritimenz.govt.nz](mailto:rccnz@maritimenz.govt.nz) (24 hours)  
Website: <http://www.maritimenz.govt.nz/navarea>



11. Recommendations:

None

12. Actions requested:

The sub-committee is requested to note the information provided.

13. Summary:

The NAVAREA XIV self-assessment report highlights MSI activities for the period since WVNWS11. New Zealand is actively involved with a number of IMO and IHO Sub-Committees and Working Groups; and capacity building in the SWP region for MSI, charting and hydrography. New Zealand is assisting Iridium with extensive pre-IOC development testing of their GMDSS services.

Annex:

A. Self-Assessment Spreadsheet