



Crowd Sourced Bathymetry

Andrew Schofield



Imperial Trans-Antarctic Expedition

MEN WANTED

for hazardous journey, small wages,
bitter cold, long months of complete
darkness, constant danger, safe re-
turn doubtful, honor and recognition
in case of success.

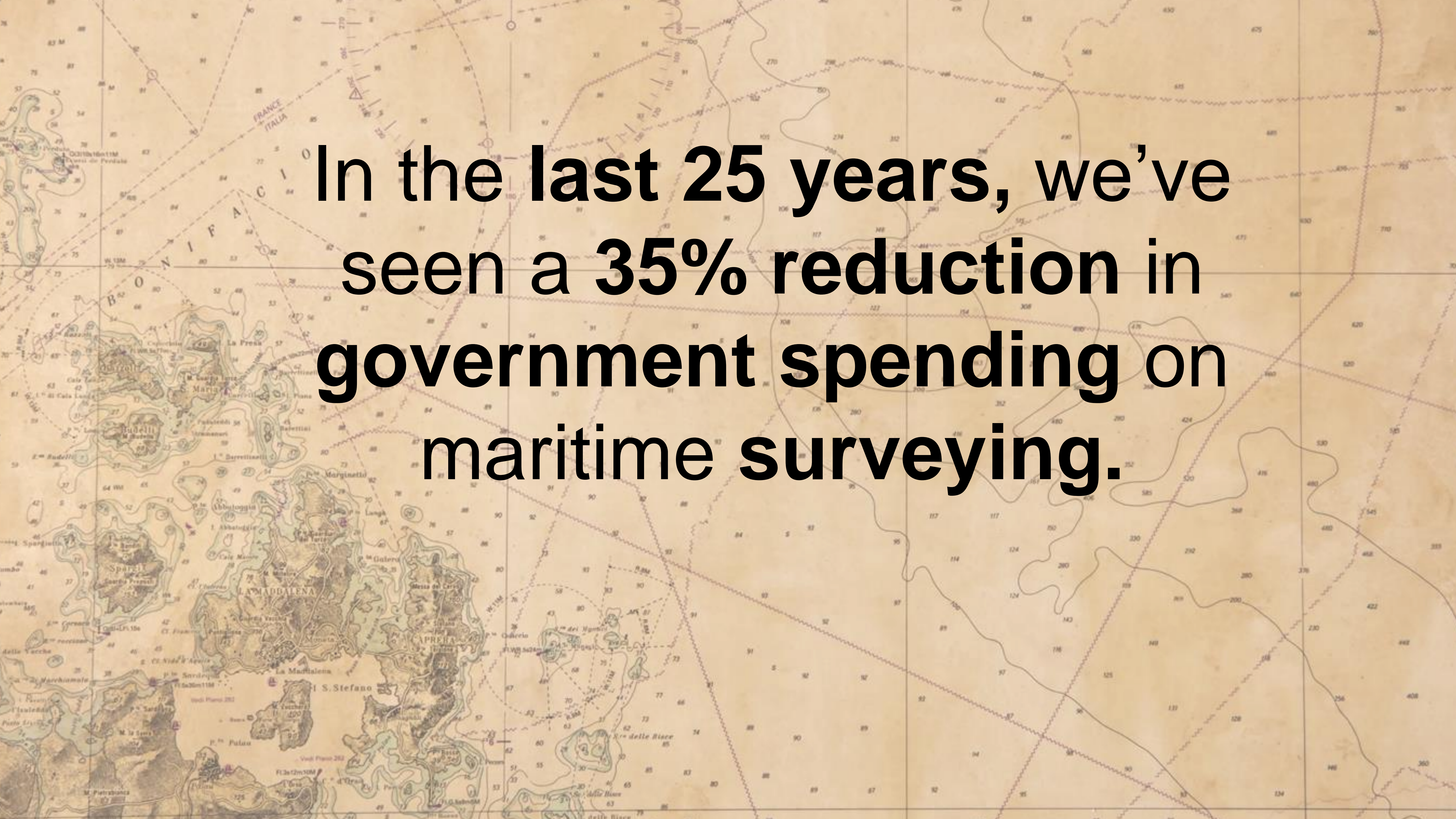
Ernest Shackleton 4 Burlington st.

MEN—Neat-appearing young men of
pleasing personality



Missing data from 0 to 200 meters

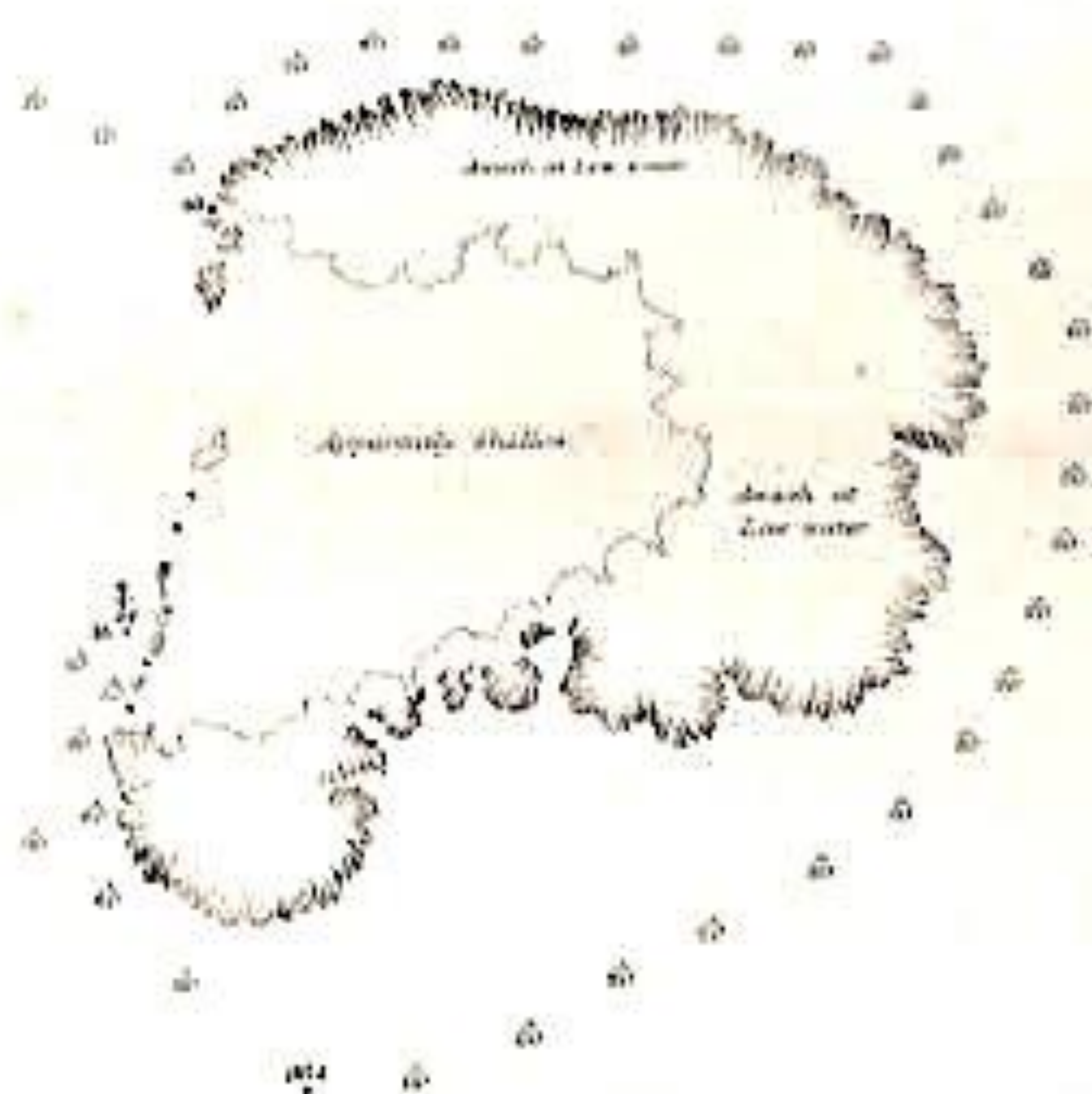
Southwest Pacific	> 95%
Polar regions	> 95%
West Africa	> 80%
Caribbean	> 80%
Australia	~ 65%
Greece	65%
United States of America	~ 40%
United Kingdom	30%
France	19%

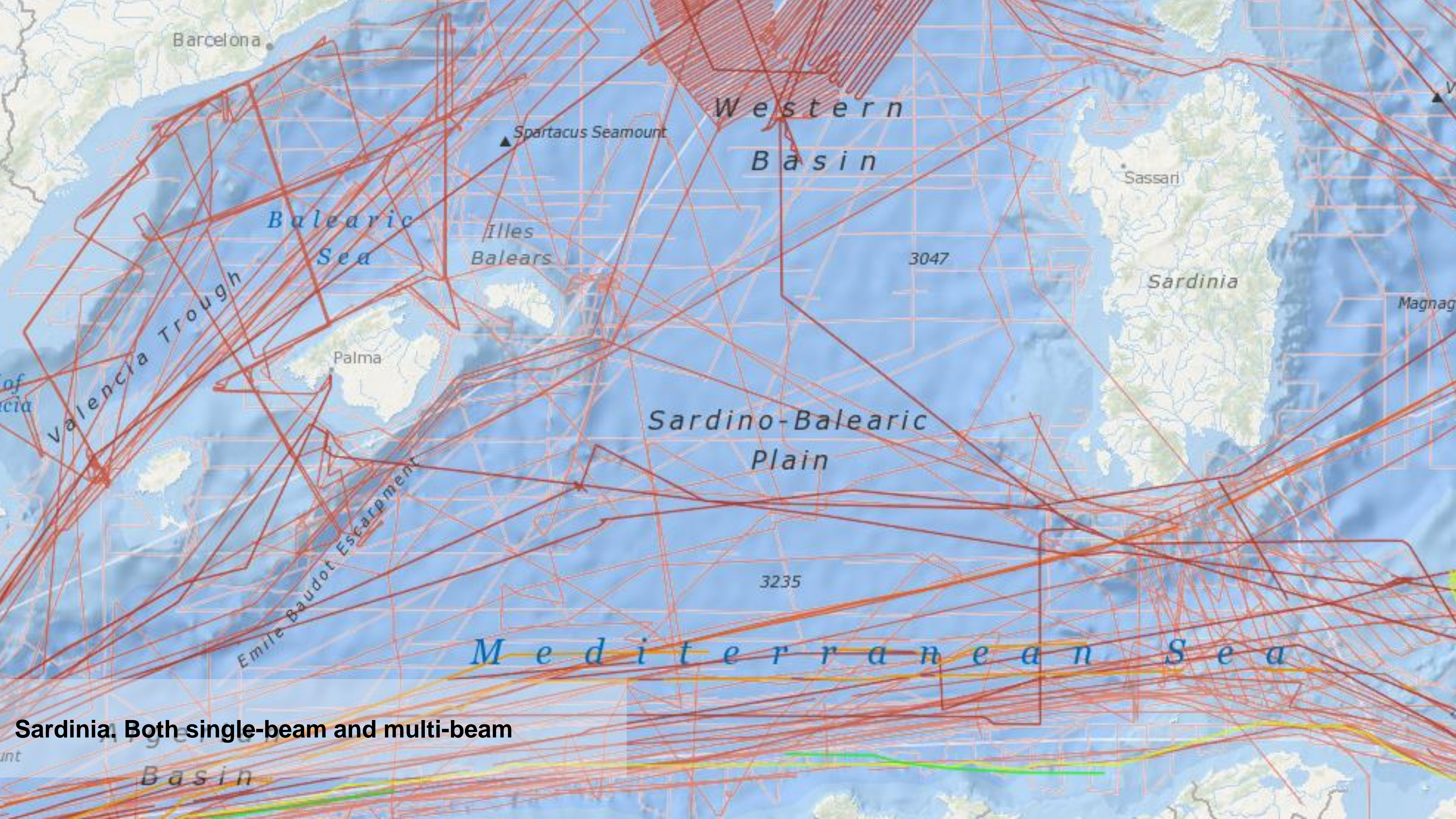


**In the last 25 years, we've
seen a 35% reduction in
government spending on
maritime surveying.**

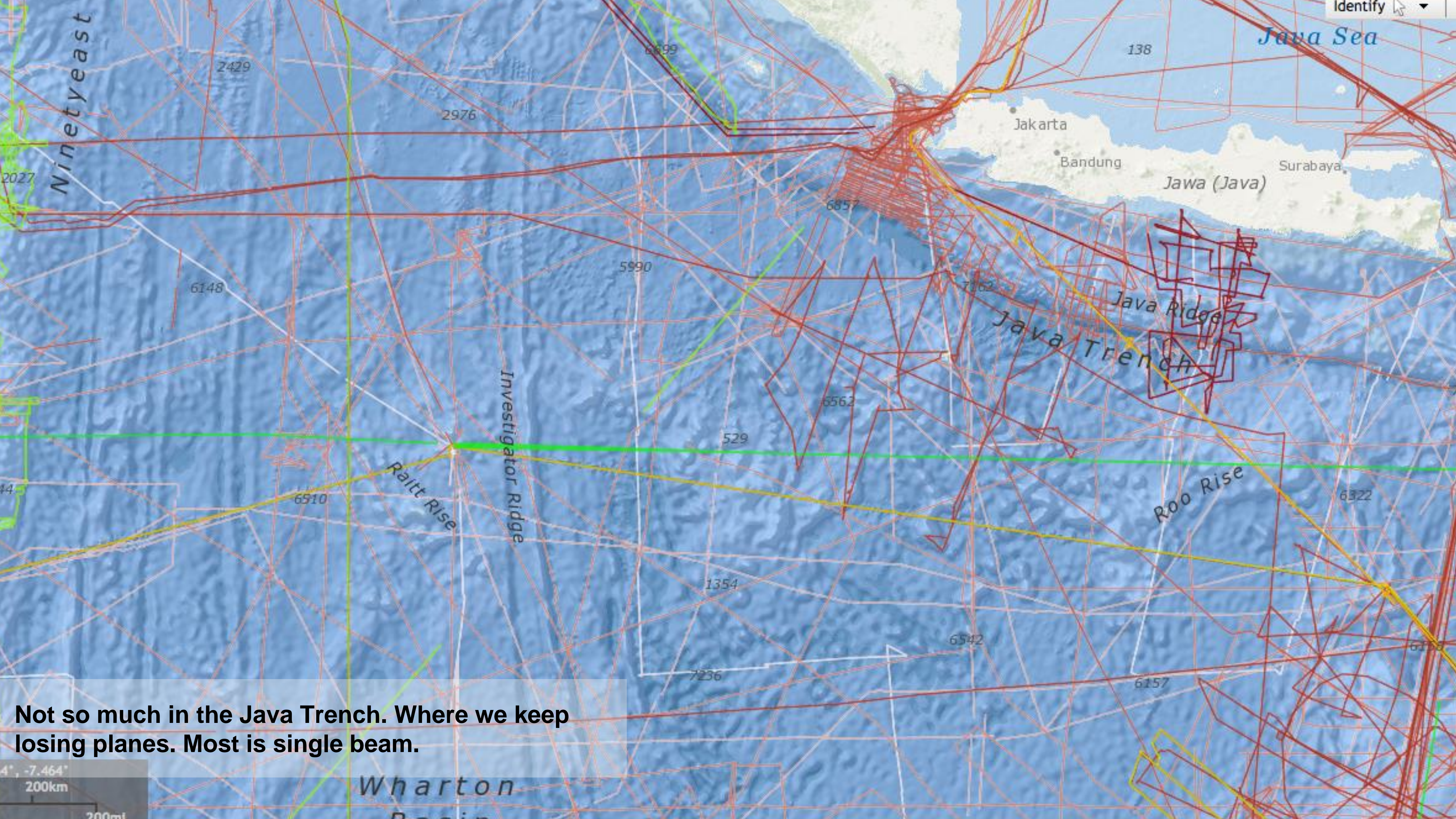


Captain Cook leadline soundings!



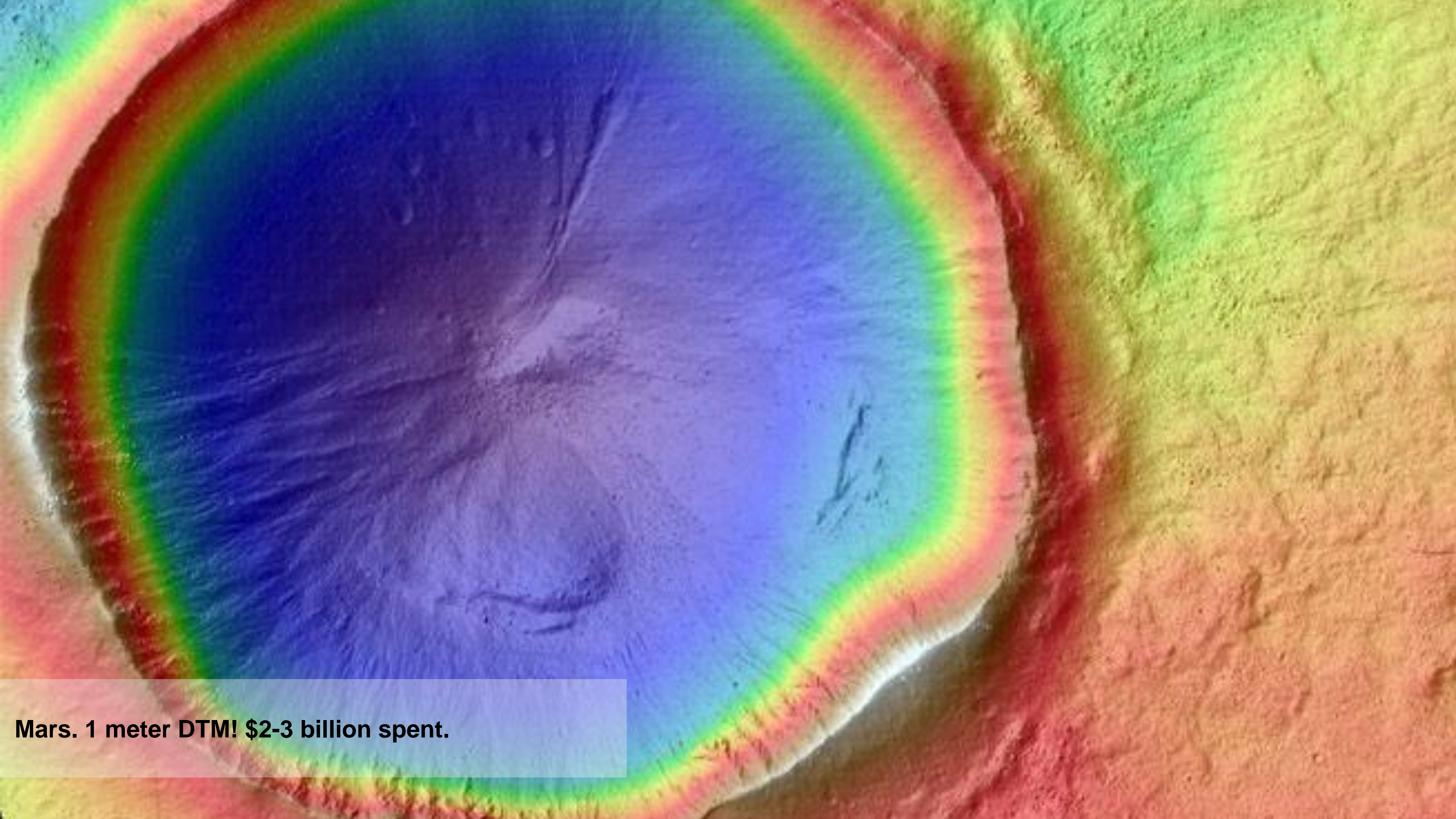


Sardinia. Both single-beam and multi-beam



Not so much in the Java Trench. Where we keep losing planes. Most is single beam.

**“We have better maps of
the Moon and Mars than
of the ocean.”**



Mars. 1 meter DTM! \$2-3 billion spent.

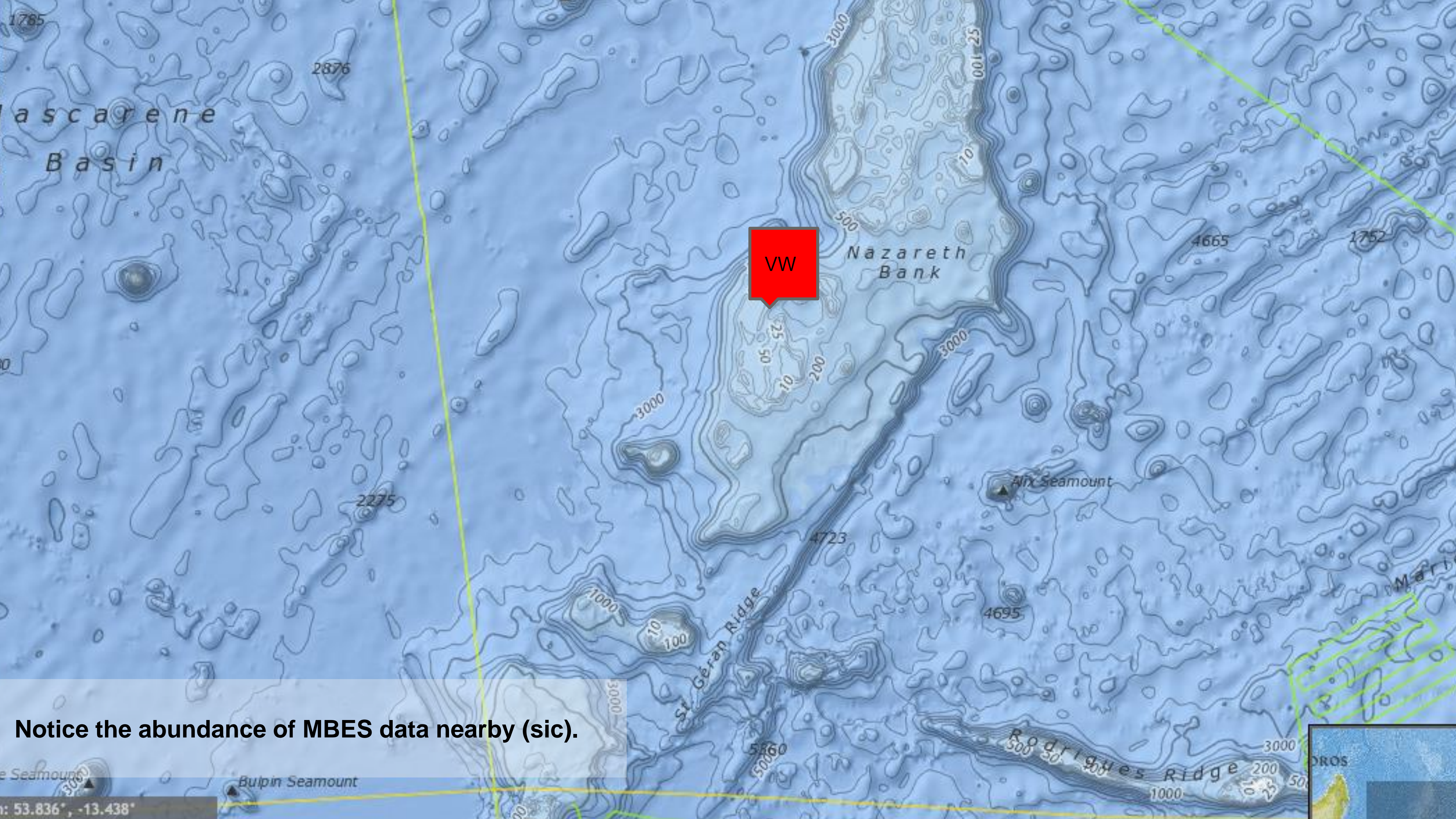
Crowdsourcing represents the act of a company or institution taking a function once performed by employees and outsourcing it to an undefined (and generally large) network of people in the form of an open call.

Jeff Howe, Wired, 2005

**But surely what we've got
is good enough, right?**



Grounding of VESTAS WIND during the 2014 Volvo Ocean Race (2014-11-29).



VW

Notice the abundance of MBES data nearby (sic).

Coordinates: 53.836°, -13.438°

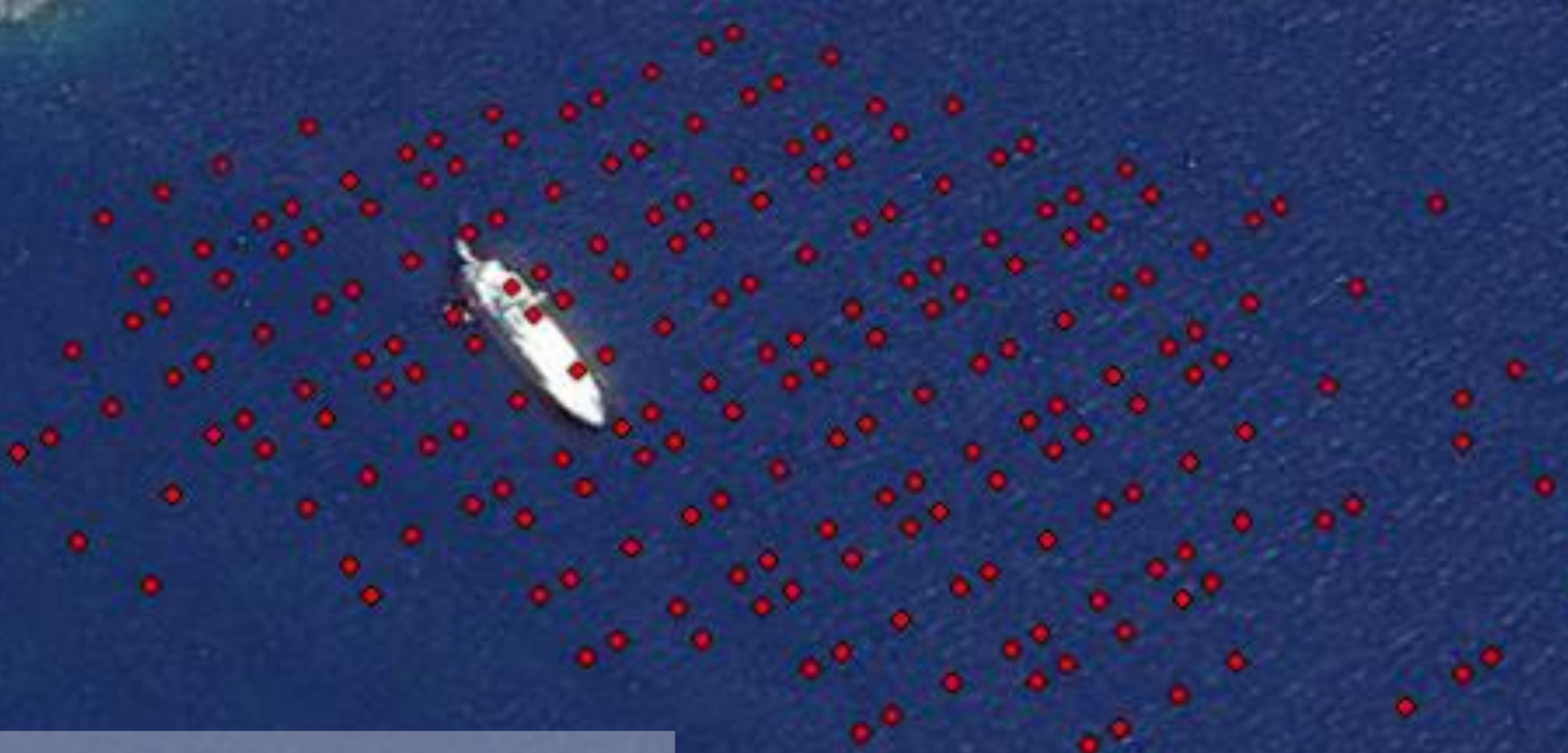
**So what can Crowd
Sourcing deliver?**



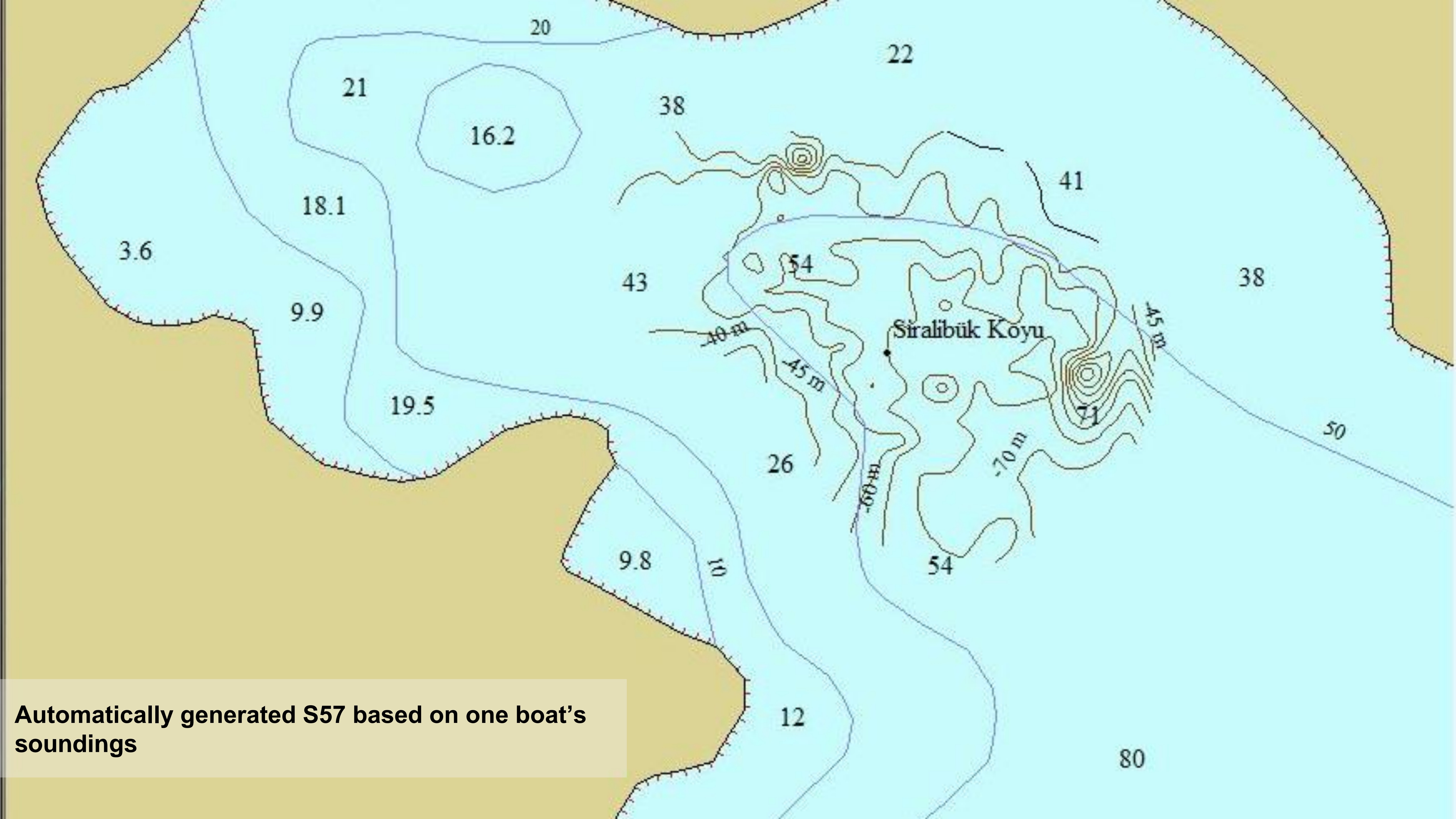
\$SDDBT,	25.9,f,	7.88,M,	4.3,F
\$SDDBT,	25.9,f,	7.88,M,	4.3,F
\$SDDBT,	26.1,f,	7.96,M,	4.4,F
\$SDDBT,	25.9,f,	7.88,M,	4.3,F
\$SDDBT,	26.0,f,	7.92,M,	4.3,F
\$SDDBT,	26.1,f,	7.96,M,	4.4,F
\$SDDBT,	26.0,f,	7.92,M,	4.3,F
\$SDDBT,	26.2,f,	8.00,M,	4.4,F
\$SDDBT,	26.1,f,	7.96,M,	4.4,F
\$SDDBT,	26.0,f,	7.92,M,	4.3,F
\$SDDBT,	25.9,f,	7.88,M,	4.3,F
\$SDDBT,	25.8,f,	7.85,M,	4.3,F
\$SDDBT,	25.6,f,	7.81,M,	4.3,F
\$SDDBT,	25.6,f,	7.81,M,	4.3,F
\$SDDBT,	25.8,f,	7.85,M,	4.3,F
\$SDDBT,	26.0,f,	7.92,M,	4.3,F
\$SDDBT,	26.0,f,	7.92,M,	4.3,F
\$SDDBT,	26.1,f,	7.96,M,	4.4,F
\$SDDBT,	26.0,f,	7.92,M,	4.3,F
\$SDDBT,	26.1,f,	7.96,M,	4.4,F
\$SDDBT,	26.0,f,	7.92,M,	4.3,F
\$SDDBT,	26.1,f,	7.96,M,	4.4,F
\$SDDBT,	26.1,f,	7.96,M,	4.4,F
\$SDDBT,	26.2,f,	8.00,M,	4.4,F



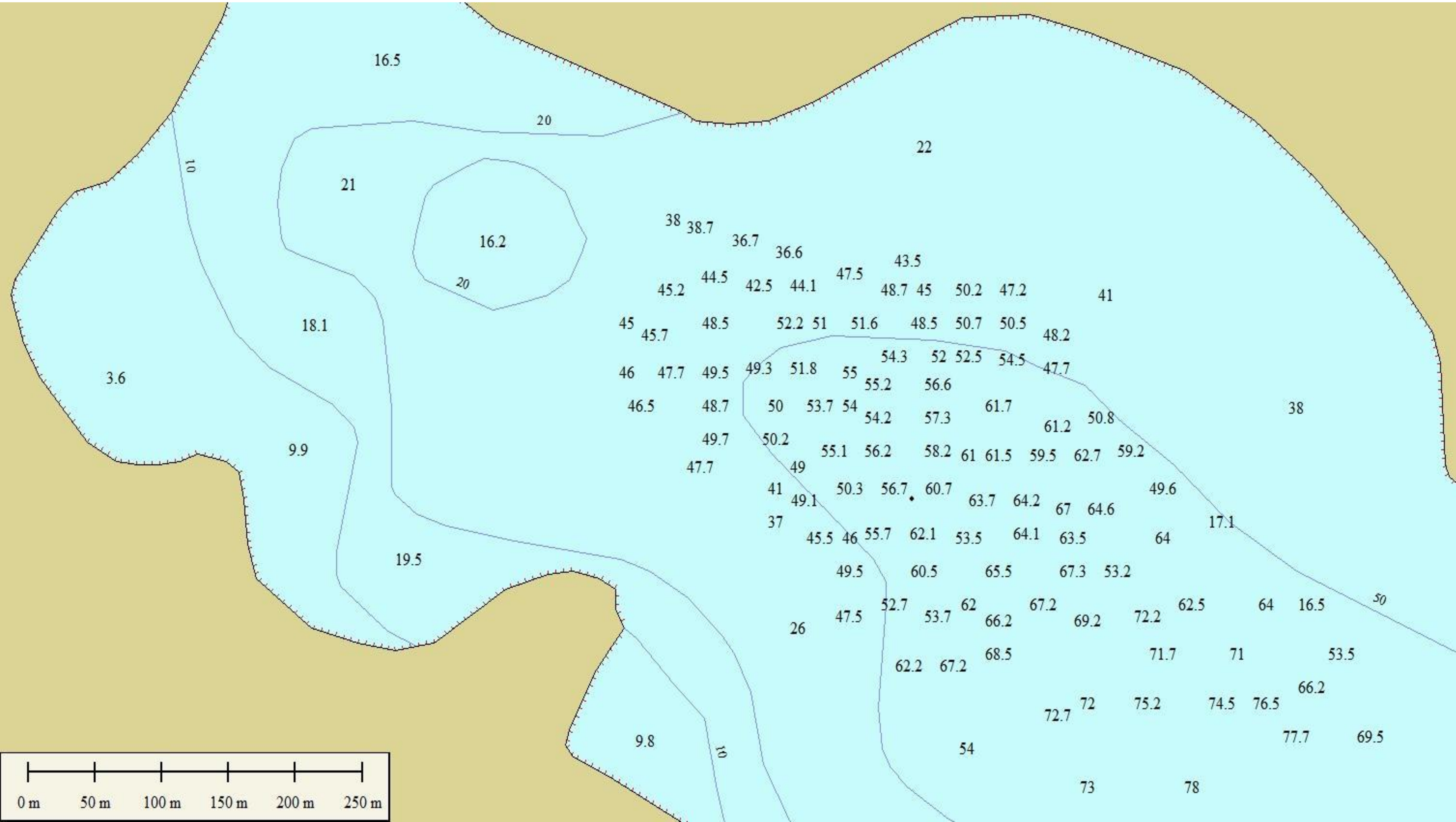
Example of collected data
Tomb Bay, Turkey

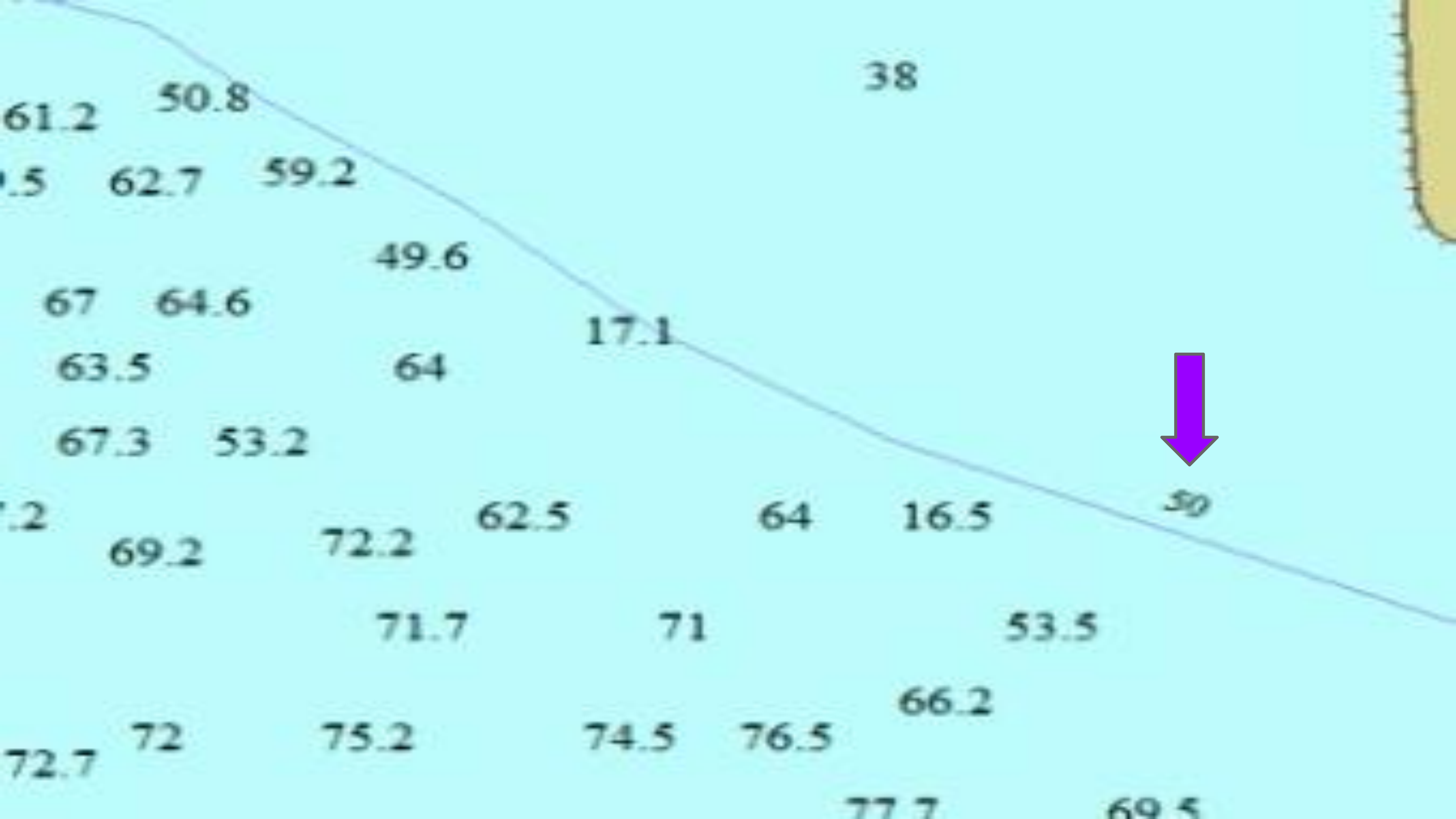


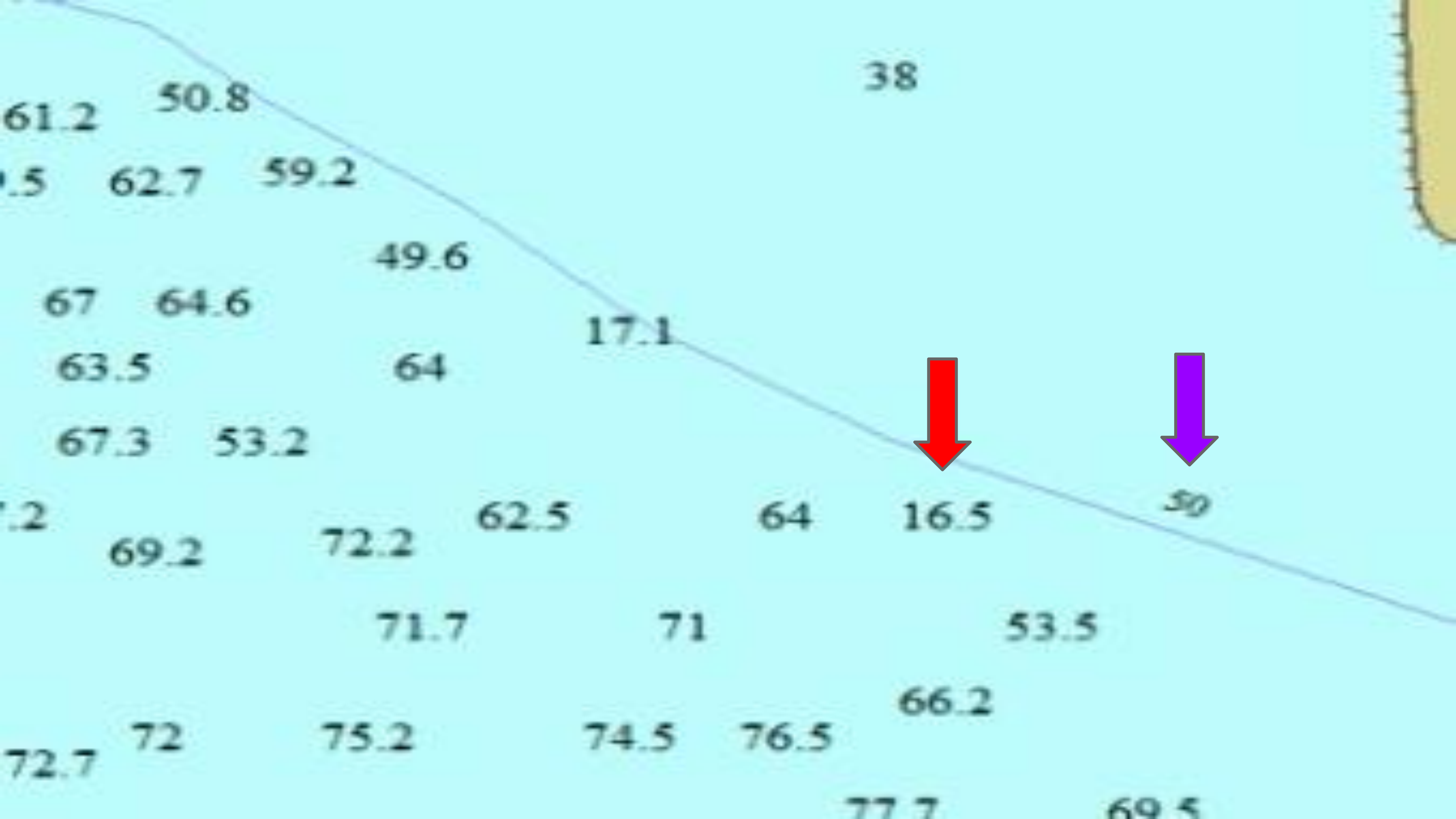
When scaled, and after curation, this is what we can accomplish

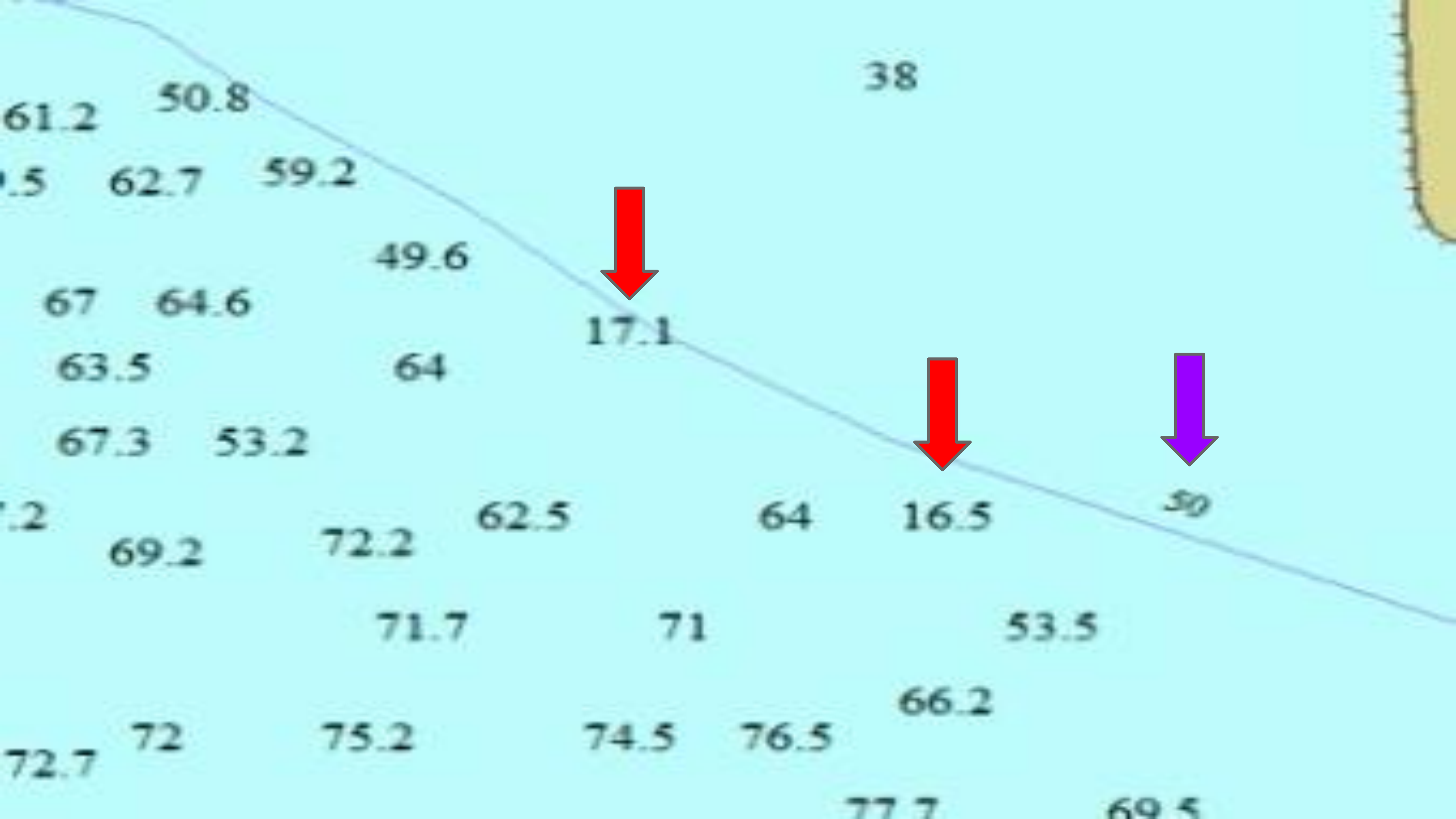


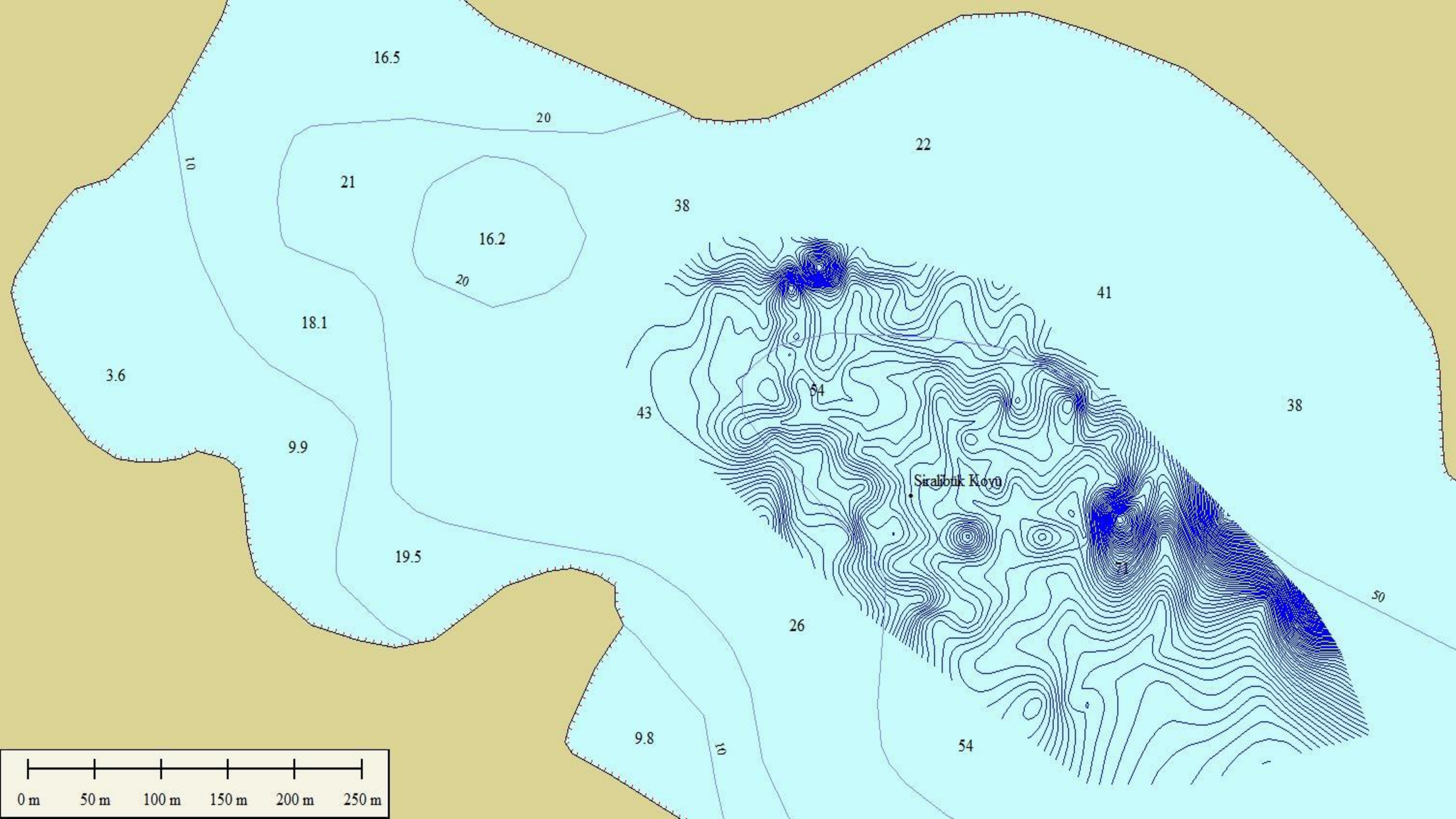
Automatically generated S57 based on one boat's soundings











6 Yachts

34 million soundings

26000 nautical miles traveled

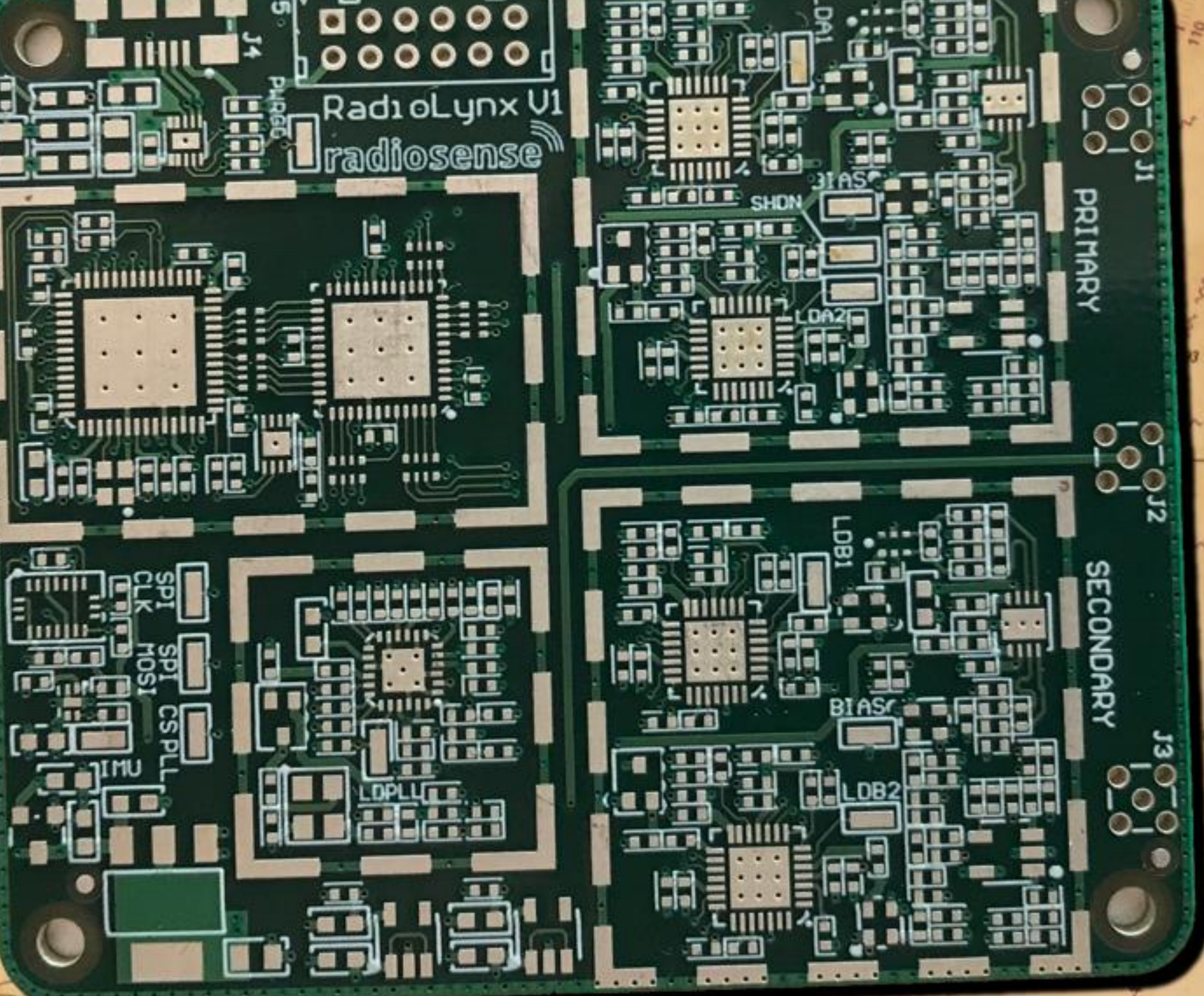
The Next Step

Precise Point Positioning

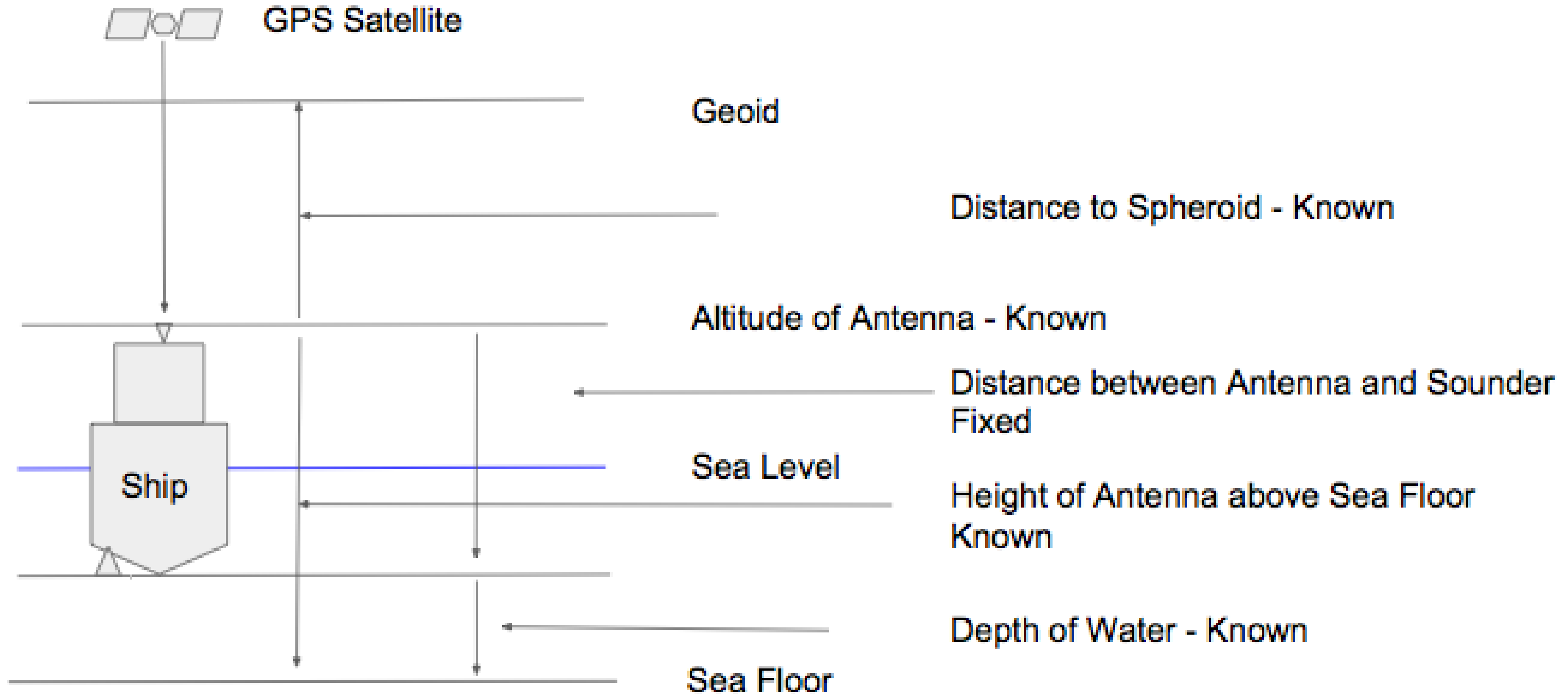
RadioLynx V1
radiosense

PRIMARY

SECONDARY



Precise Point Positioning



Get one of these!



Crowd Sourced Survey



2004 Tsunami striking East coast Sri Lanka

Bathymetric effects of near coastal sea bed topography



2004 Tsunami striking East coast Sri Lanka
Bathymetric effects of near coastal
sea bed topography



2004 Tsunami striking East coast Sri Lanka
**Bathymetric effects of near coastal
sea bed topography**



Navigationa! Note

or

Illegal Survey?

Crowd Sourced Bathymetry



**Environmental
Ocean Resource Management
Blue Economy
Moral Imperative**

