

Paper for Consideration by ENCWG4 Blue Lights in S-52

Submitted by:	IC-ENC
Executive Summary:	This paper presents a proposal to modify the conditional symbology procedure for Lights in S-52 so that blue lights display more clearly.
Related Documents:	S-52 Preslib 4.0.2, S-4 B-470
Related Projects:	S-101

Introduction / Background

1. The S-52 Presentation Library defines how objects contained in an ENC cell are to be displayed in ECDIS. One IC-ENC member has reported that in ECDIS blue navigational lights display with a magenta flare or sector. To make the display more logical and in a similar manner to multicoloured paper charts (B-470.4) it seems appropriate to amend S-52 so that blue lights display with a blue flare or sector.

Analysis/Discussion

2. Due to the display of lights being complex a conditional symbology procedure (CSP) is included in the S-52 Preslib Part I at 13.2.4. As currently defined, this procedure results in LIGHTS objects with the COLOUR attribute 5 "blue" populated selecting the other/default light flare 'LITDEF11', similarly within the continuation, the colour CHMGD would be selected for the colour of the arc of a sectored light. The case of blue and yellow lights, is covered in the associated tables for the CSP but is not present within the diagrams.

3. Blue lights are used in a number of ports and are often used when a large amount of background light may make other light colours hard to distinguish.

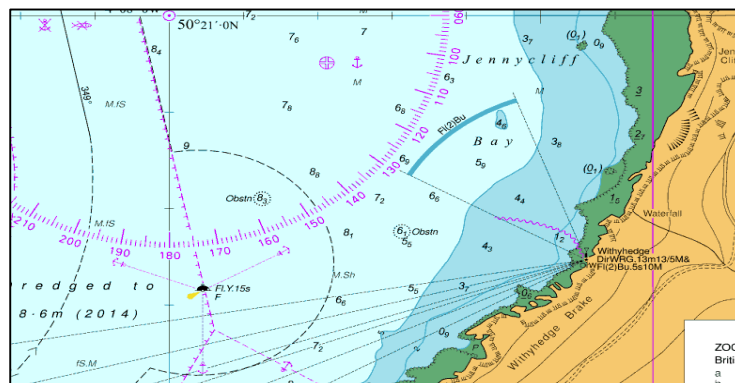


Figure 1 – display of a blue light sector on a multicoloured raster chart.

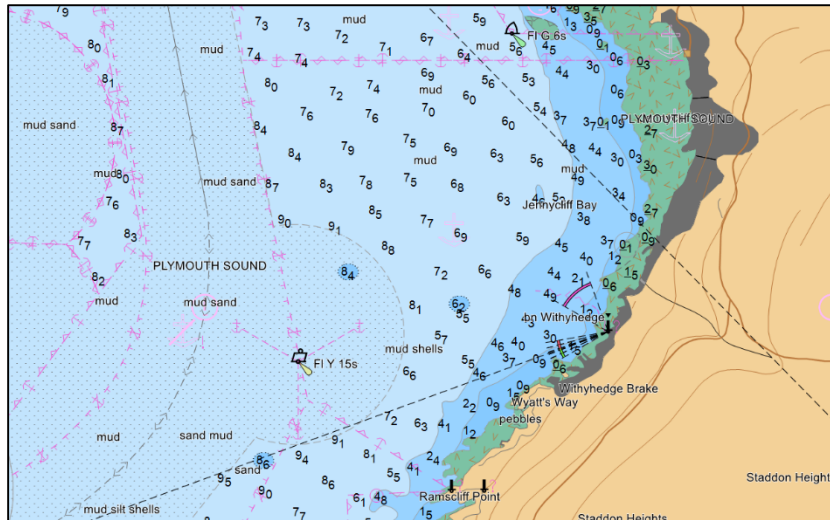


Figure 2 – display of a blue light sector with a magenta fill in an ENC.

Recommendation

4. IC-ENC therefore recommends the following minor modifications to the S-52 Preslib at the next opportunity;
 - a) S-52 Preslib Part I 7.1.2 Add a new colour token LITBL. An appropriate shade of blue to will need to be identified.
 - b) Add a new blue light flare symbol Part I 16.4 and Part I Addendum
 - c) Modify the LIGHTS06 CSP as follows;
 1. Add the colour 5 (blue) to the CSP and its continuation in the locations highlighted in Annex A of this document. The corresponding table will also require amendment.

Action Required of ENC WG

The ENCWG is invited to:

- a) Modify the S-52 Preslib at the next opportunity as described above.
- b) If endorsed, pass this change to the S-101 PT for consequential action in the S-101 Portrayal Catalogue.

Annex A

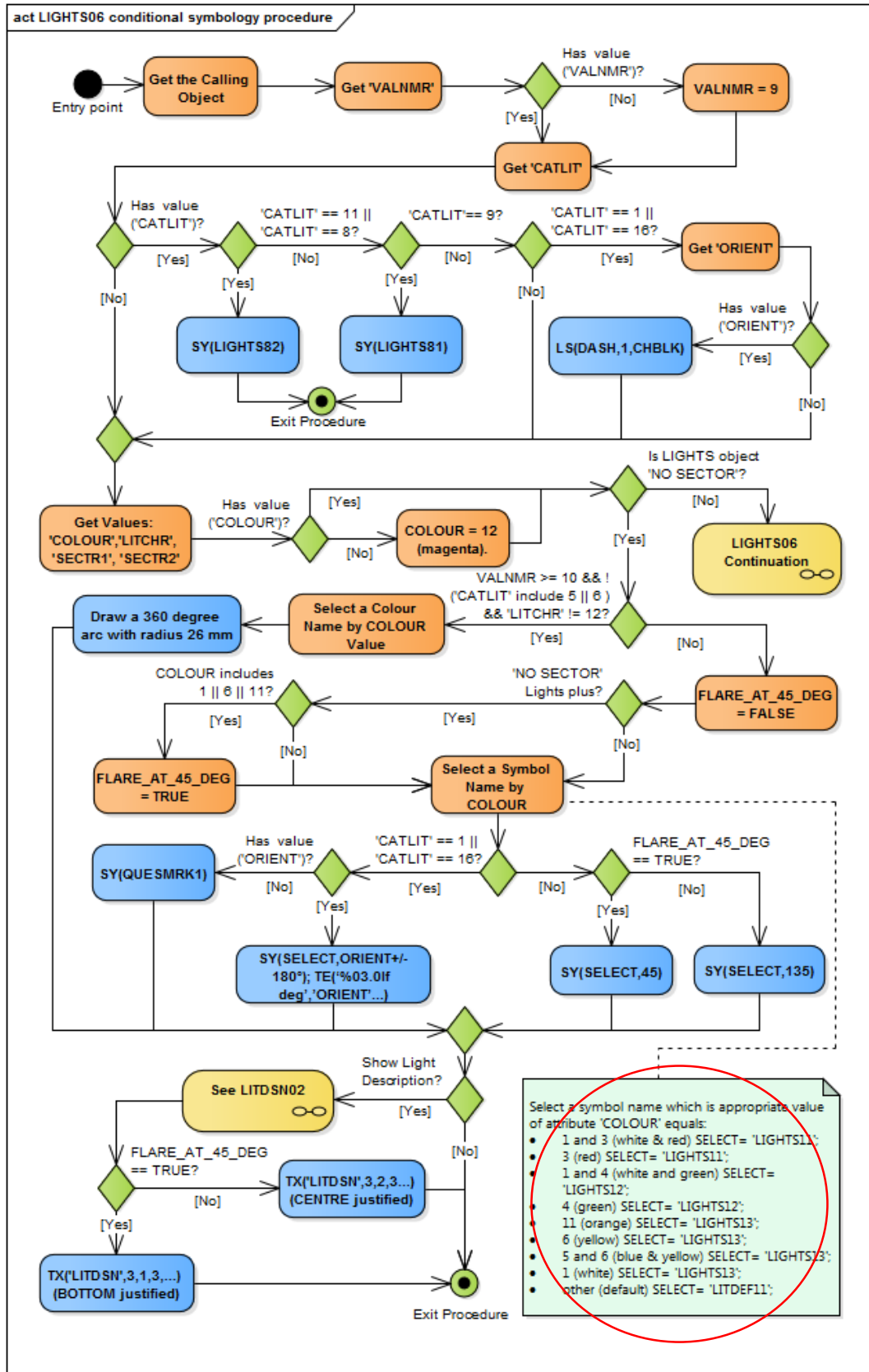


Figure 8 LIGHTS06 Continuation describes the sector lights showing its line legs and arcs.

