

ENCWG7 / S-101 PT9 WG

## LOGISTICS INFORMATION

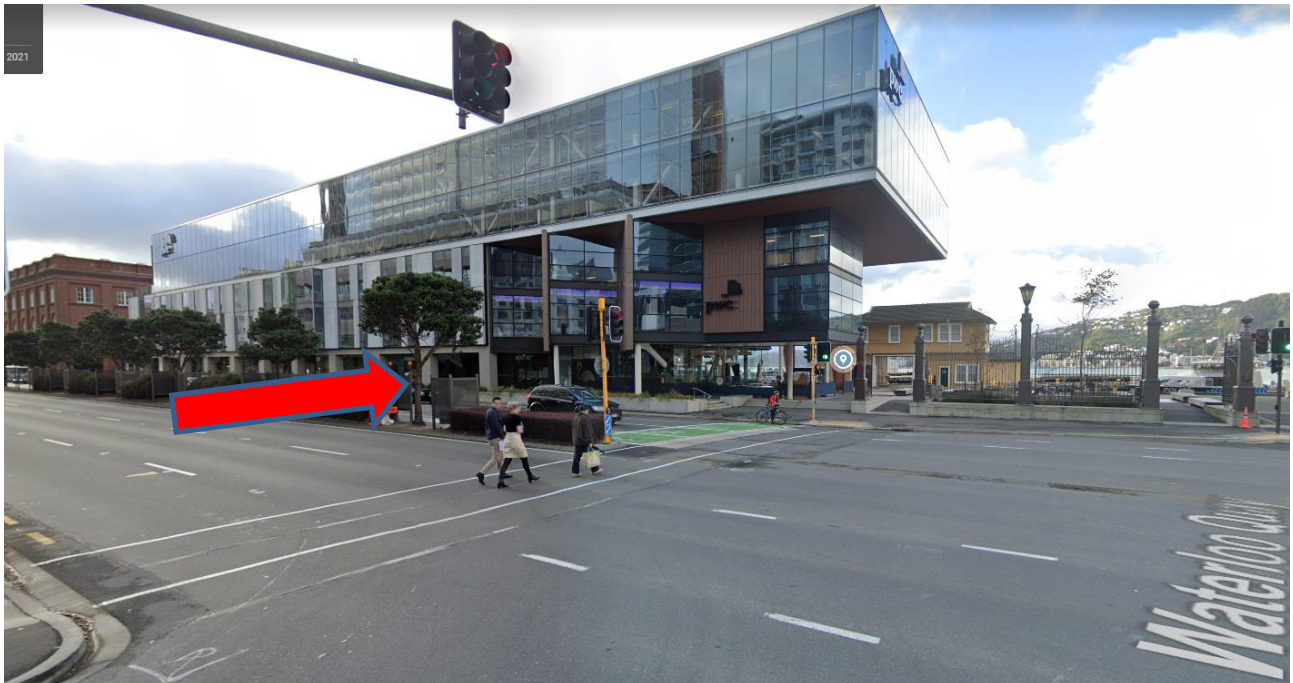
Wellington, New Zealand, 21 – 25 November 2022



Toitū Te Whenua Land Information New Zealand is pleased to welcome the ENC/ S-101 WG members to Wellington, New Zealand.

### Venue

ENCWG7 / S-101 PT9 WG meeting will be held in the Kumutoto function venue, 10 Waterloo Quay, Pipitea, Wellington. The meeting room is on the first floor.



### Catering

Coffee and lunch will be served at the venue.

### Accommodation within easy walking distance

Central Wellington is a walkable city, with accommodation and a variety of restaurants within easy walking distance. Some of the closer hotels to the venue are:

- Rydges Wellington, 75 Featherston St, Pipitea, 3-mins walk to venue.  
<https://www.rydges.com/accommodation/new-zealand/wellington/>
- Wellesley Boutique Hotel, 2-8 Maginnity Street, Wellington, 4-mins walk to venue.  
<https://wellesleyboutiquehotel.co.nz/>
- InterContinental Wellington, 2 Grey Street, Wellington, 7-min walk to venue.  
<https://wellington.intercontinental.com/>

### Transportation to and from Airport

Wellington is located at southern end of the North Island. The [Wellington Airport](#) is 7.5km from the venue. [Wellington Airport Transport to the city](#).

- Taxis – the main taxi rank is located outside of Door E.
- Rideshare – Uber, Zoomy and OLA operate from the airport. Follow the directions in your app to the pick-up area from Door G.

### General Information

New Zealand's capital city is nestled between rolling hills and a stunning harbour, and has a vibrant and compact downtown area that's best explored on foot.

In Wellington you'll discover an amazing range of cafes, art galleries, theatres, attractions, and a humming nightlife ([wellingtonnz.com](http://wellingtonnz.com)).

Wellington is a windy city due to its seaside location on the Cook Strait. November is Wellington's spring time and brings about a balance of temperature and weather conditions. Westerly as opposed to southerly winds are often stronger in spring, which means that while winds still do sometimes occur, the wind that comes with them is normally not as cuttngly cold as those that come from the south. Spring temperature averages sit around 4 degrees Celsius (39 degrees Fahrenheit) at minimum, with daily maximums usually hovering around 16 degrees Celsius (60 degrees Fahrenheit).

### Electric sockets



In New Zealand the power plugs and sockets are of type I. The standard voltage is 230 V.

Type I: mainly used in Australia, New Zealand, China, the South Pacific and Argentina.

### Covid 19

[www.covid19.govt.nz](http://www.covid19.govt.nz) has advice for international travellers around vaccination requirements, testing requirements and has a helpful planning guide.

<https://covid19.govt.nz/international-travel/travel-to-new-zealand/>

All of New Zealand is currently at Orange in our "traffic light" of the protection framework, which primarily is about wearing masks while indoors in public venues.

You are encouraged to plan for the unlikely event of [testing positive during your stay](#) in new Zealand. And recommending checking the website prior to your departure, in case requirements have changed.

#### Visa requirements

Depending on your nationality, and the purpose and duration of your visit, you may require a visa to enter New Zealand. We urge you to check visa requirements with your travel agent or at the Immigration New Zealand website ([immigration.govt.nz](http://immigration.govt.nz)) at your earliest convenience. If you require any assistance, or a letter of invitation, please liaise with the local organizer below.

If you are a visa waiver traveller you can apply for a NZeTA: [Visa waiver traveller](#)

#### Additional Information

LINZ will arrange an Ice Breaker and Conference Dinner location; these details will be provided closer to the time.

#### Contact details

The point of contact regarding the conference's details, more particularly logistical, visa and accommodation assistance are provided hereafter:

Primary Point of contact	Verena Bosselmann <a href="mailto:vbosslemannborsos@linz.govt.nz">vbosslemannborsos@linz.govt.nz</a> +64 (4) 498 3845
--------------------------	---

