

## Paper for Consideration by NCWG Guidelines for coloured CATZOC diagrams

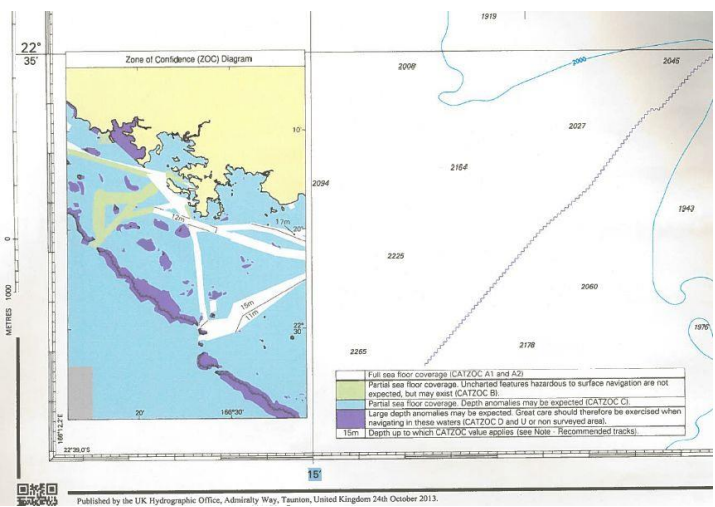
<b>Submitted by:</b>	The Netherlands
<b>Executive Summary:</b>	Coloured CATZOC diagrams
<b>Related Documents:</b>	S4 B-297
<b>Related Projects:</b>	

### Introduction / Background

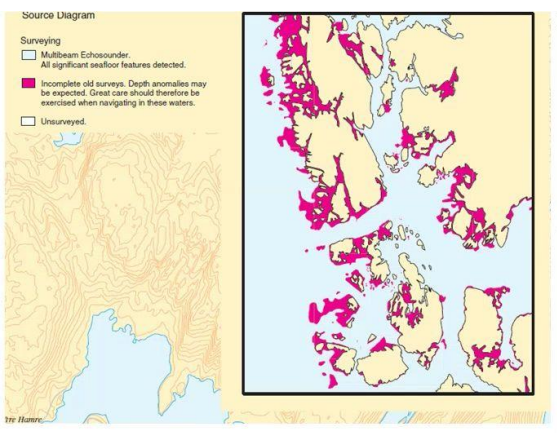
The Netherlands is planning to change all source diagrams on nautical maps into CATZOC-diagrams.

In S4 chapter B-297 the rules for ZOC-diagrams are described. Looking in various nautical charts various CATZOC diagrams are displayed in colours. An example is the following diagram:

(Notice the blue area where CATZOC=C)

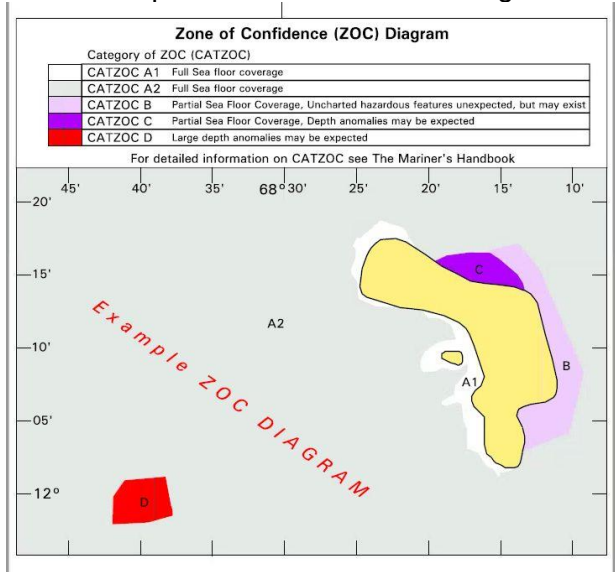


Another example with other colours and for a national chart. (this is not an official CATZOC diagram but has the same meaning. The blue area can be translated as CATZOC=A1/A2)



The use of a CATZOC diagram with coloured areas can be very useful and easy to read:

Model of a possible new CATZOC diagram:



**Analysis / Discussion:**

Guidelines for the use of coloured areas are barely given in S4, except in B-297.2 where

“Grey tint (or another colour except green, blue or magenta) may be used to highlight areas covered by after disaster surveys (see B-417.8) ”

ZOC diagrams are more frequently incorporated in paper charts by an increasing number of Hydrographic offices. The need for a higher level of standardization is becoming evident.

In theory it's possible that a certain colour is used as CATZOC A1 on an INT charts of a member state, whilst being used for CATZOC D or Unassessed on a chart from a different member state. This will certainly cause confusion to mariners, and may undermine confidence in CATZOC diagrams in general.

**Justification and Impacts**

Are coloured CATZOC diagrams allowed and which colours should be used?

**Action required of NCWG**

NCWG is invited to take action to specify more stringent guidelines for the portrayal of CATZOC in ZOC diagrams. If coloured diagrams will be allowed guidelines for the use of these colours are necessary.