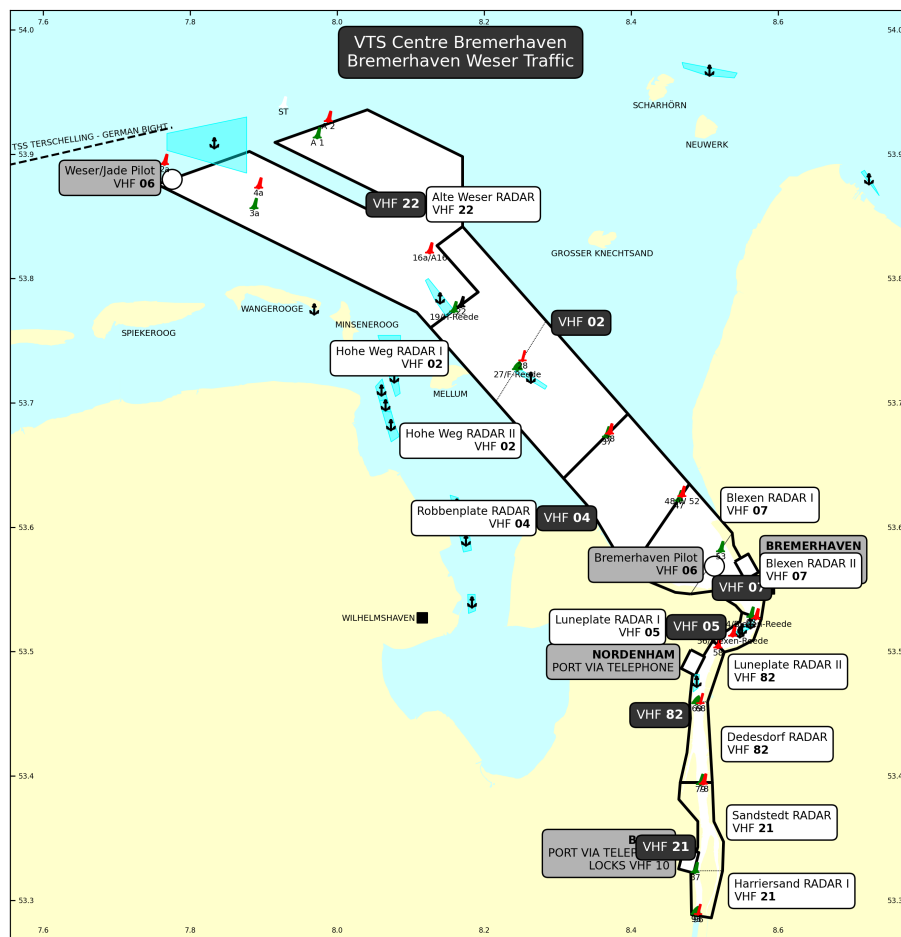


Bremerhaven Weser Traffic

Vessel Traffic Service

Area

see diagram



Station

VTS Centre Bremerhaven

Contact Details

Bremerhaven Weser Traffic

Call Bremerhaven Weser Traffic
Frequency see diagram
Telephone +49 (0) 4 71 4 83 53 33
Fax +49 (0) 4 71 4 83 52 00
E-mail vts-bremerhaven@wsv.bund.de

Continuous Listening Watch

when entering on VHF working channels and VHF channel 16

Reports

Sailing Plan

Who

- * vessels of 50 m in length or more, including pushed or towed composite units
- * vessels carrying dangerous goods in bulk (gas / chemicals / petroleum / petroleum products)

* unloaded tankers if not cleaned, degassed or completely inerted after carrying petroleum / petroleum products / chemicals with a flashpoint below 35 °C

When/Where

- * before entering the VTS area
- from sea (if not already reported by SP to German Bight Traffic)
- from a harbour or berth within the VTS area

to whom

Bremerhaven Weser Traffic

What

A vessel's name and call sign

D vessel's position

U vessel's length (metres), beam (decimetres) and type

O vessel's draught (decimetres)

G port of departure

I port of destination

P indication if liquefied gases, chemicals, or petroleum / petroleum products are / were carried in bulk, and in case: type, quantity, UN-number and if tanks are not cleaned or if they are completely inerted

Q indication of deficiencies, restrictions of manoeuvrability

T names of the vessel's owner or the latter's agents

W number of persons on board

Position Report

Who

vessels mandatory to report as for Sailing Plan

When/Where

- * when entering the VTS area
- at reporting points shown on diagram

to whom

Bremerhaven Weser Traffic

What

A vessel's name and call sign

B passing time

D position

F speed

Deviation Report

Who

vessels mandatory to report as for Sailing Plan

When/Where

in case of amendments of Sailing Plan (e. g. when entering / leaving an anchorage)

to whom

Bremerhaven Weser Traffic

What

amendments of Sailing Plan

Incident Report

Who

all vessels

When/Where

in case of an incident impairing safety or environment

to whom

Bremerhaven Weser Traffic

What

details of incident, in case of DG = dangerous goods report / HS = harmful substances report /
MP = marine pollutants report

Rules

Services

Pilotage

Pilot District

River Weser

Pilot Service

pilotage compulsory

tankers carrying gas / chemicals / petroleum / petroleum products in bulk, or unloaded tankers, if not cleaned, degassed or completely inerted after having carried petroleum / petroleum products or chemicals with a flashpoint below 35 °C

other vessels of 90 m in length or 13 m in beam; 8 m in draught or more if bound for Bremerhaven (Geeste estuary resp. Blexen Reede), 6.50 m in draught or more if bound for destinations above Bremerhaven

Contact Details

Pilot Request

Arrival

Who

pilotage compulsory vessels

When/Where

at least 12 hrs before arrival at boarding place (also request river pilots for Weser ports between Bremerhaven and Bremen)

to whom

River Weser

What

- vessel's name, call sign, length, beam and gross tonnage (GT)
- actual draught on arrival/departure (in decimetres)
- pilot boarding position
- ETA/ETD at/from pilot boarding position
- destination of pilotage required
- indication whether transfer by pilot vessel or by helicopter
- port of destination
- port of departure
- freeboard and distance from pilot door to the waterline

Departure

Who

pilotage compulsory vessels

When/Where

at least 3 hrs before departure (also request sea pilots for Weser estuary off Bremerhaven)

- departures between 1900-0800 request pilot before 1700

to whom

River Weser

What

- vessel's name, call sign, length, beam and gross tonnage (GT)
- actual draught on arrival/departure (in decimetres)
- pilot boarding position
- ETA/ETD at/from pilot boarding position
- destination of pilotage required
- indication whether transfer by pilot vessel or by helicopter
- port of destination
- port of departure
- freeboard and distance from pilot door to the waterline

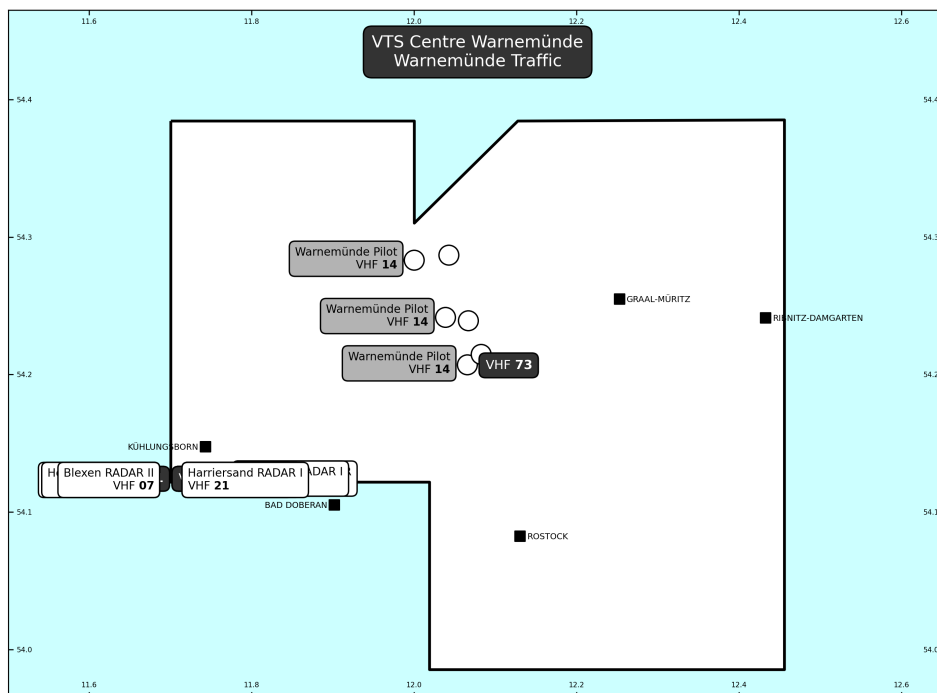
Pilot Boards

Warnemünde Traffic

Vessel Traffic Service

Area

see diagram



Station

VTS Centre Warnemünde

Contact Details

Warnemünde Traffic

Call Warnemünde Traffic
Frequency see diagram
Telephone +49 (0) 3 81 20 67 18 41
Telephone +49 (0) 3 81 20 67 18 42
Fax +49 (0) 3 81 20 67 18 45
E-mail vkz-warnemuende@wsv.bund.de

Continuous Listening Watch

when entering on VHF working channels and VHF channel 16

Reports

Sailing Plan

Who

- * vessels of 30 m in length or more, including pushed or towed composite units
- * vessels carrying dangerous goods in bulk (gas / chemicals / petroleum / petroleum products)
- * unloaded tankers if not cleaned, degassed or completely inerted after carrying petroleum / petroleum products / chemicals with a flashpoint below 35 °C

When/Where

- * 30 min before entering the fairway for Rostock
- * before leaving a harbour or berth within the VTS area

to whom

Warnemünde Traffic

What

A vessel's name and call sign

D vessel's position

U vessel's length (metres), beam (decimetres) and type

O vessel's draught (decimetres)

G port of departure

I port of destination

P indication if liquefied gases, chemicals, or petroleum / petroleum products are / were carried in bulk, and in case: type, quantity, UN-number and if tanks are not cleaned or if they are completely inerted

Q indication of deficiencies, restrictions of manoeuvrability

T names of the vessel's owner or the latter's agents

Position Report

Who

vessels mandatory to report as for Sailing Plan

When/Where

- at reporting points shown on diagram
- after pilot embarkation
- when entering or leaving the fairway
- when turning in the Überseehafen turning basin
- * beginning and completion of the turning manoeuvre

to whom

Warnemünde Traffic

What

A vessel's name and call sign

B passing time

D position

F speed

Deviation Report

Who

vessels mandatory to report as for Sailing Plan

When/Where

in case of amendments of Sailing Plan (e. g. when entering / leaving an anchorage)

to whom

Warnemünde Traffic

What

amendments of Sailing Plan

Incident Report

Who

all vessels

When/Where

in case of an incident impairing safety or environment

to whom

Warnemünde Traffic

What

details of incident, in case of DG = dangerous goods report / HS = harmful substances report/
MP = marine pollutants report

Rules**Services****Pilotage****Pilot District**

Rostock Warnemünde and River Warnow

Pilot Service

pilotage compulsory

tankers carrying gas / chemicals / petroleum / petroleum products in bulk, or unloaded tankers, if not cleaned, degassed or completely inerted after having carried petroleum / petroleum products or chemicals with a flashpoint below 35 °C

other vessels

from Rostock Approach to the berth No 60 Warnowpier

of 100 m in length or 15 m in beam or 7.5 m in draught or more

from berth No 60 Warnowpier to light-buoy "59/M2"

of 80 m in length or 11 m in beam or 6 m in draught or more

from light-buoy "59/M2" upriver to Stadthafen Rostock

of 60 m in length or 10 m in beam or 4.5 m in draught or more

Contact Details**Pilot Request****Arrival****Who**

pilotage compulsory vessels

When/Where

at least 3 hrs before arrival at boarding position

to whom

Rostock Warnemünde and River Warnow

What

- vessel's name, call sign
- length, beam and gross tonnage (GT)
- ETA at pilot boarding position
- destination of pilotage required
- actual draught
- speed
- agency

Departure**Who**

pilotage compulsory vessels

When/Where

at least 3 hrs before departure

- departures between 1900-0700 request pilot before 1700

to whom

Rostock Warnemünde and River Warnow

What

- vessel's name, call sign
- length, beam and gross tonnage (GT)
- ETA at pilot boarding position
- destination of pilotage required
- actual draught
- speed
- agency

Pilot Boards

