

S-164 Update (NIPWG)

S-164 Update

- S-164 development is continuing with a release plan of exchange sets up to the end of 2023. Work will continue in 2024 to complete all exchange sets.
- All data in S-164 is delivered via exchange sets, no single cell installation is required on the ECDIS
- Exchange Sets will bundle all required components together
- Release plan includes
 - Catalogues
 - Interoperability
 - ENC
 - Other products.
- S-164 revision also includes S-98 and all of its components

The Challenges

- **Dialogue:** There are few places where all the relevant parties sit around a table to agree how S-100 ECDIS works. Some things have to be agreed through NIPWG before they can be published or set in stone.
- **Rework:** Changes to schemas, content, catalogues means exchange sets have to be remade. An automated process had to be constructed to avoid continuous rework of exchange sets.
- **Dependencies:** Some of the moving parts we deal with...
 - IHO implementation of the security scheme
 - Publication of “live” versions of product specifications, complete with all necessary parts current with latest edition of S-100.
 - Publication of operational versions of all catalogues including interoperability
 - Interoperability – testing and adjustment of content
 - How the S100 ECDIS functions – S-98 Annex C – still under revision

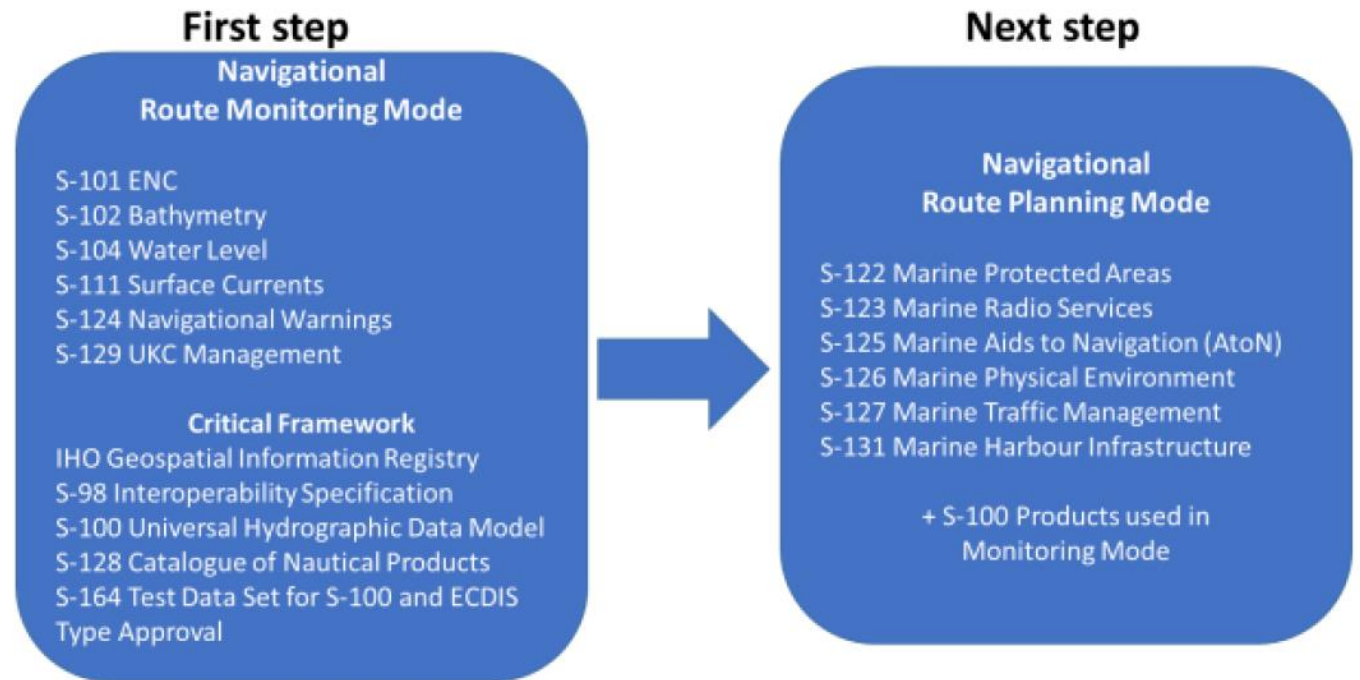
- Now have a draft document v1.0.0 which is being supplemented with exchange sets
- List of tests -> Exchange Sets and Exchange Sets -> Data components(and catalogues required)
- 277 tests, ~70 exchange sets

1				
2	Test Name (Short)	Description	Exchange Set(s)	Settings
3	InitialCatalogues	Successful initial loading and confirmation of versions of multiple catalogues.	PowerUPCatalogues	
4	InvalidCatalogues	Rejection of Invalid feature catalogue	PowerUpCatalogues	
5	InvalidPC	Rejection of Invalid portrayal catalogue	PowerUpCatalogues	
6			CorruptPortrayalCatalogue	
7	OutOfSequenceCatalogues	Loading datasets for which no valid catalogue exists	PowerUPCatalogues	
8			UpdatedCatalogueData	
9	UpdateCatalogues	Successful updating of catalogue versions	PowerUPCatalogues	
10			PowerUpCatalogueUpdates	
11	NewCatalogues	Successful installation of data matching new catalogues	PowerUpCatalogues	
12			NewProduct	
13	InitialPowerUp	Initial loading and portrayal of datasets (all products)	InitialPowerUp	
14	PowerUp	Confirmation of version information in System Database	PowerUp	
15	AdditionalCell	Loading initial datasets (for multiple products)	PowerUp	
16			AdditionalCell	
17	RemoveCell	Removal of a datasets (for multiple products)	PowerUp	
18			AdditionalCell	
19	CorruptData	Successful rejection of invalid data	CorruptData	
20	CorruptUpdate	Successful rejection of invalid updates data (multiple products)	PowerUP	
21			CorruptUpdates	
22	SequentialUpdate	Review of update information	PowerUp	

Products Required.

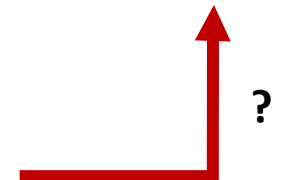
S-164 (live version) only contains Phase 1 products

- S-101
- S-102
- S-104
- S-111
- S-124
- S-129
- (S-128)



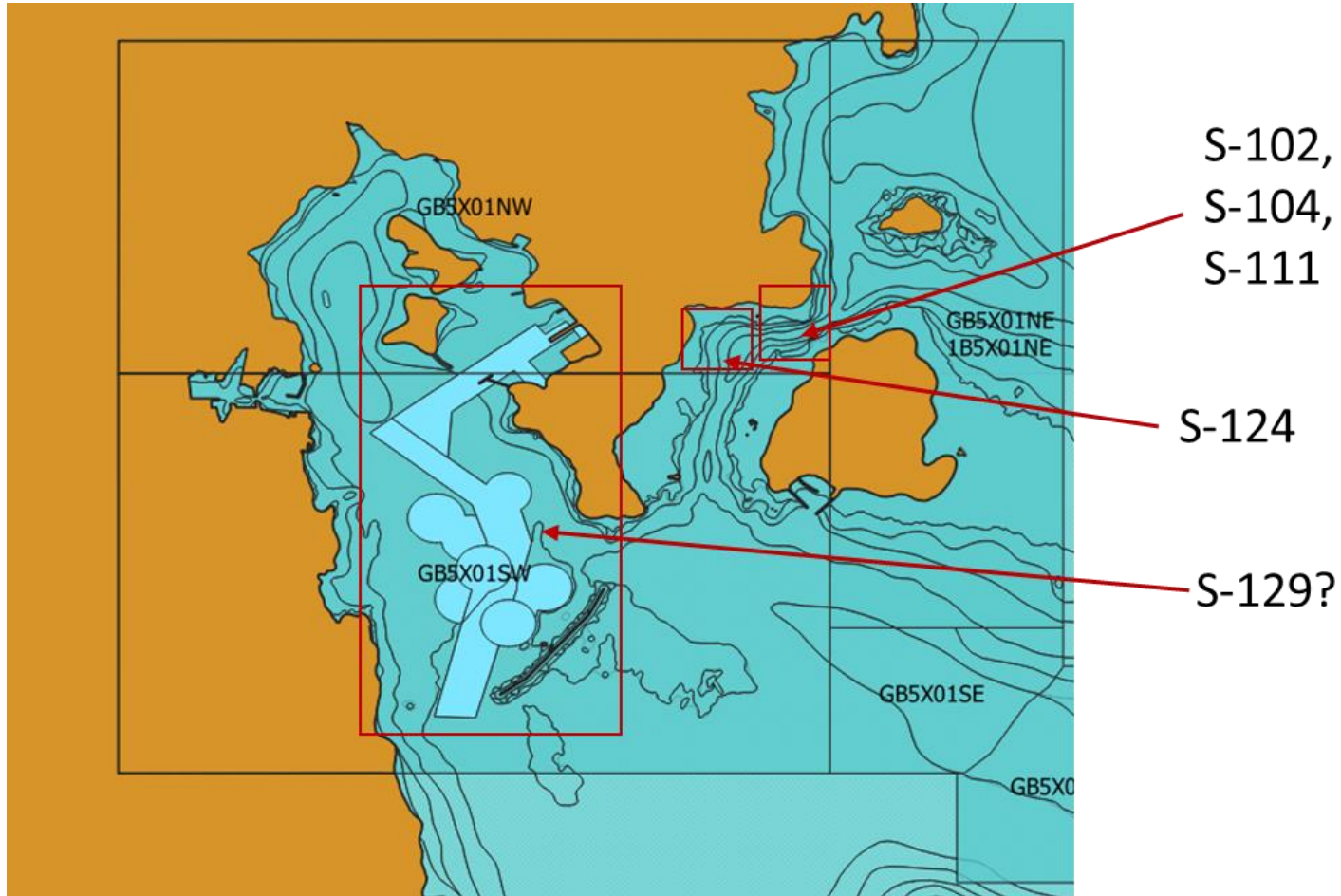
NIPWG support required for S-164 =

- Product Specifications for Phase 1
- Any additions to S-98 Annex C required for S-100 ECDIS functionality



What do we need from NIPWG?

- An agreed view on what constitutes unofficial data (Currently an MRN to define the role of the data producer in the producer certificate, official or unofficial)
- S-128 publication and consensus. We currently have a temporary GML Schema and catalogue
 - Any model modifications which affect how Update status report works
 - Some S-128 proposals may affect how dual fuel equivalent ENC's are identified. Also there are proposals to harmonise and simplify coverage polygons in CATALOG.XML, should be proposed for S-128 as well.
 - S-128 – how distribution uses S-128 and how it is compiled.
- Publication of S-124 and S-129, edition 5.0.0 including GML Schemas.
- Any ECDIS functionality which is product specification “specific” defined and published in S-98, e.g.
 - S-124 delivery
 - Any further MRN proposals
- Any NPUB UI proposals (later, at this meeting)
- Test data, or help creating it. We can build data using existing catalogues and then feed in genuine data later.
- If future updates (phase 2) include other NIPWG products, we should work out where to scheme the data...



Initial View of scheming for products other than S-101

