

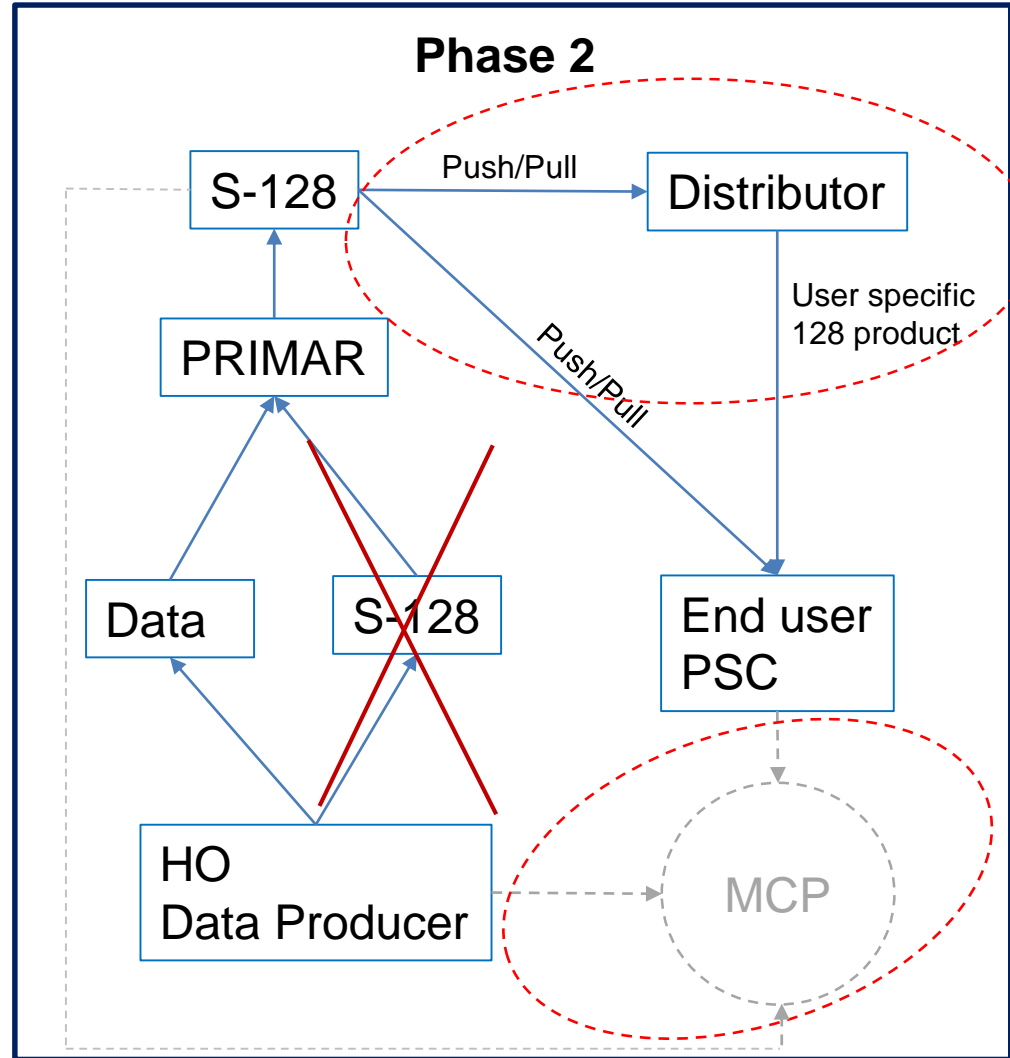
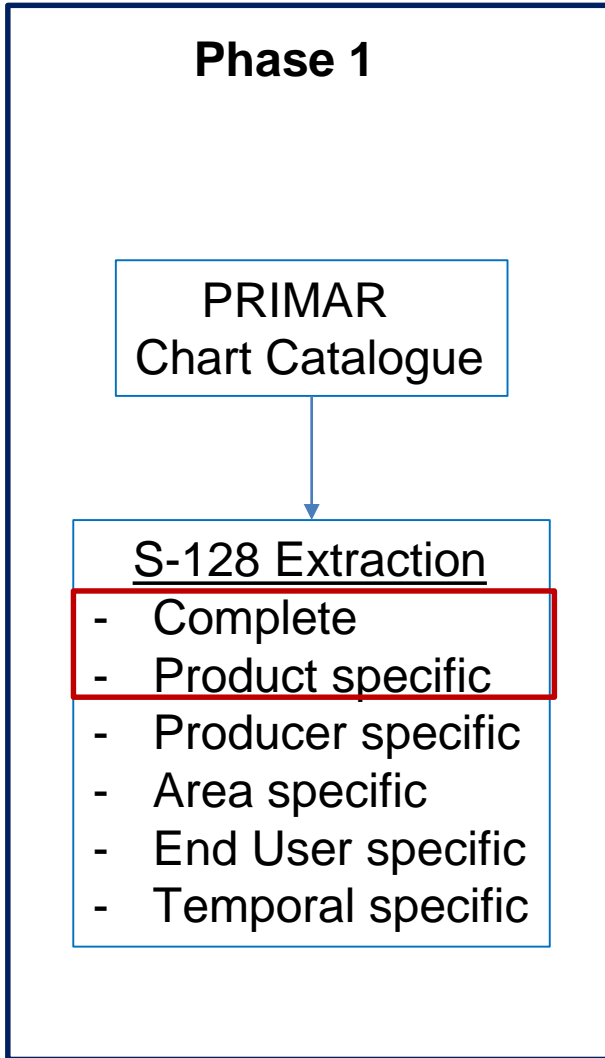


PRIMAR[®]

PRIMAR S-128 Catalogue of Nautical Products – project report

Svein Skjaeveland

The project phases



Phase 1 Activities



- A. Map out Information to be included in S-128 dataset extraction.
- B. Extract S-128 datasets.
- C. Identify and engage with distributor/OEM.
- D. Phase 2 preparations.
- E. IHO and PAC reporting.

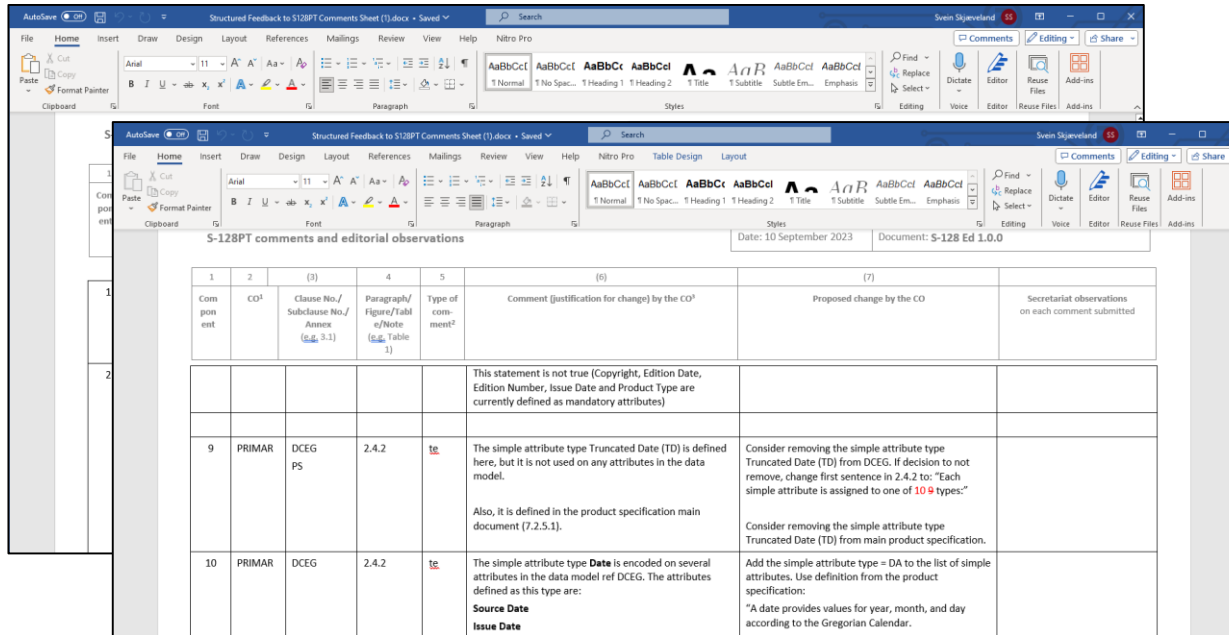
A: Map out information to be included in S-128 dataset extraction

1. Analysis mandatory information:
 - a. Create an overview of the mandatory information that must be captured in the S-128 datasets according to the data model defined in S-128 1.0.0.
2. Analysis non-mandatory information:
 - a. Create an overview of the non-mandatory information (if any) that must be captured in the S-128 datasets according to the data model defined in S-128 1.0.0.
3. Identify destination of relevant mandatory and non-mandatory (if any) information within the products.
4. Define Metadata profile:
 - a. What to be encoded in CATALOG.XML for the S-128 product.
5. S-98 Annex C review
 - a. Review to better understand the intended use of S-128 in ECDIS and the level of services we may provide.

Green:
Completed

Yellow:
Ongoing/TBS

A: Map out information to be included in S-128 dataset extraction



| 1 | 2 | (3) | 4 | 5 | (6) | (7) |
|-----------|-----------------|--|--|------------------------------|---|--|
| Component | CD ¹ | Class No./ Subclause No./ Annex (e.g. 3.1) | Paragraph/ Figure/Table (e.g. Table 1) | Type of comment ² | Comment (justification for change) by the CD ³ | Proposed change by the CO |
| | | | | | This statement is not true (Copyright, Edition Date, Edition Number, Issue Date and Product Type are currently defined as mandatory attributes) | |
| 9 | PRIMAR | DCEG PS | 2.4.2 | te | The simple attribute type Truncated Date (TD) is defined here, but it is not used on any attributes in the data model. Also, it is defined in the product specification main document (7.2.5.1). | Consider removing the simple attribute type Truncated Date (TD) from DCEG. If decision to not remove, change first sentence in 2.4.2 to: "Each simple attribute is assigned to one of 10 9 types:" Consider removing the simple attribute type Truncated Date (TD) from main product specification. |
| 10 | PRIMAR | DCEG | 2.4.2 | te | The simple attribute type Date is encoded on several attributes in the data model ref DCEG. The attributes defined as this type are: Source Date Issue Date | Add the simple attribute type = DA to the list of simple attributes. Use definition from the product specification: "A date provides values for year, month, and day according to the Gregorian Calendar." |

- Not registered GI Registry
- Textual inconsistencies
- Data model considerations - mandatory information/logic of certain elements.

S-128 PRIMAR Service



S-57

| «enumeration» productType |
|--|
| paper nautical chart = 1 |
| ENC = 2 |
| raster nautical chart = 3 |
| INT Chart = 4 |
| nautical publication = 5 |
| S-100 compliant product = 6 |
| electronic application for safety navigation = 7 |
| special purpose charts = 8 |
| e-Navigation service = 9 |
| others = 10 |



S-128 PRIMAR Service



S-102

Search for product ID, title, location or country

- ENC Coverage
- ENC Coverage by Usagebands
- S-102 Coverage
- S-111 Coverage
- RTZ Coverage
- Nautical Publications Coverage
- WMS Coverage

PRIMAR
Login
Basket
ENC
S-102
S-111
RTZ
Nautical Publications
WMS

Leaflet | Esri, HERE, Garmin, © OpenStreetMap contributors, and the GIS User Community | DISCLAIMER

| «enumeration» productType |
|--|
| paper nautical chart = 1 |
| ENC = 2 |
| raster nautical chart = 3 |
| INT Chart = 4 |
| nautical publication = 5 |
| S-100 compliant product = 6 |
| electronic application for safety navigation = 7 |
| special purpose charts = 8 |
| e-Navigation service = 9 |
| others = 10 |

S-128 PRIMAR Service



S-111

| «enumeration» productType |
|--|
| paper nautical chart = 1 |
| ENC = 2 |
| raster nautical chart = 3 |
| INT Chart = 4 |
| nautical publication = 5 |
| S-100 compliant product = 6 |
| electronic application for safety navigation = 7 |
| special purpose charts = 8 |
| e-Navigation service = 9 |
| others = 10 |

S-128 PRIMAR Service



RTZ

The screenshot shows the PRIMAR web application interface. At the top, there is a search bar with the text "Search for product ID, title, location or country". Below the search bar is a world map. On the right side of the map, there is a sidebar menu with the following items: PRIMAR, Login, Basket, ENC, S-102, S-111, RTZ, Nautical Publications, and WMS. The RTZ item is highlighted. In the bottom left corner, there is a legend with the following items: ENC Coverage, ENC Coverage by Usagebands, S-102 Coverage, S-111 Coverage, RTZ Coverage (checked), Nautical Publications Coverage, and WMS Coverage. The bottom of the map shows the text "Leaflet | Esri, HERE, Garmin, © OpenStreetMap contributors, and the GIS User Community | DISCLAIMER".

| «enumeration» productType |
|--|
| paper nautical chart = 1 |
| ENC = 2 |
| raster nautical chart = 3 |
| INT Chart = 4 |
| nautical publication = 5 |
| S-100 compliant product = 6 |
| electronic application for safety navigation = 7 |
| special purpose charts = 8 |
| e-Navigation service = 9 |
| others = 10 |

S-128 PRIMAR Service



Nautical Publications

Search for product ID, title, location or country

- ENC Coverage
- ENC Coverage by Usagebands
- S-102 Coverage
- S-111 Coverage
- RTZ Coverage
- Nautical Publications Coverage
- WMS Coverage

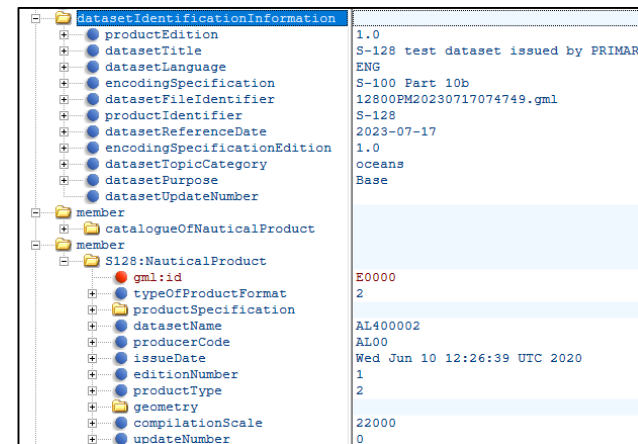
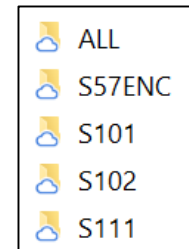
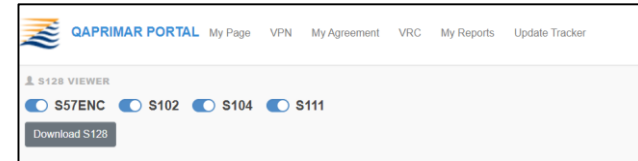
PRIMAR
Login
Basket
ENC
S-102
S-111
RTZ
Nautical Publications
WMS

Leatlet | Esri, HERE, Garmin, © OpenStreetMap contributors, and the GIS User Community | DISCLAIMER

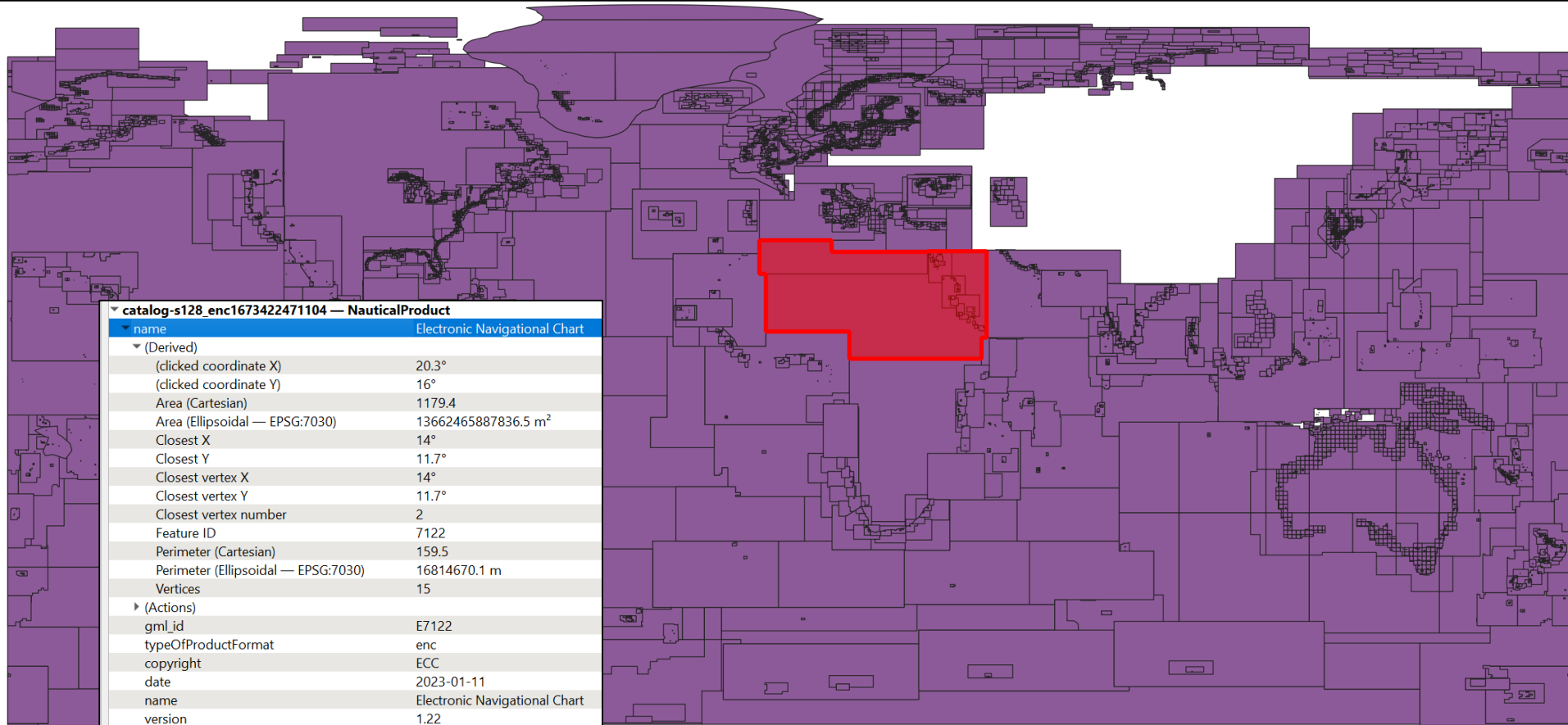
| «enumeration» productType |
|--|
| paper nautical chart = 1 |
| ENC = 2 |
| raster nautical chart = 3 |
| INT Chart = 4 |
| nautical publication = 5 ← |
| S-100 compliant product = 6 |
| electronic application for safety navigation = 7 |
| special purpose charts = 8 |
| e-Navigation service = 9 |
| others = 10 |

B: Extract complete S-128 dataset

1. Create S-128 for complete portfolio:
 - a. One dataset containing S-57, S-101, S-102, S-111.
2. Create product specific S-128:
 - a. Separate datasets containing S-57, S-101, S-102, S-111.
3. Create exchange catalogue:
 - a. S-128 products to be packaged in exchange set structure.
4. API solutions
 - a. Solutions for accessing and acquire an updated S-128 dataset on request.
5. User interface for S-128 generation
 - a. Consider if the PRIMAR Chart Catalogue should be expanded to contain such an interface
6. Enable data protection



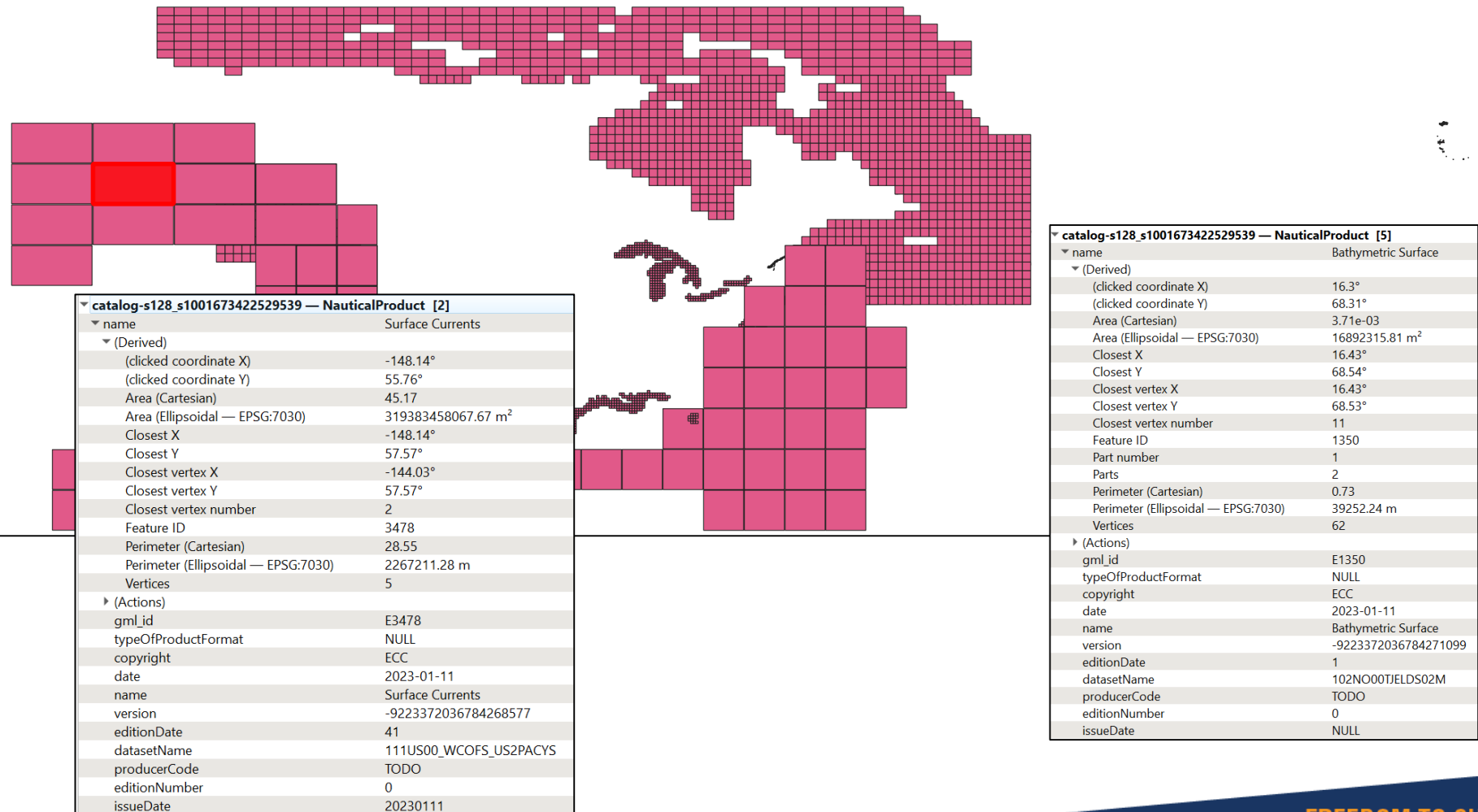
S-57 ENC example



| ▼ catalog-s128_enc1673422471104 — NauticalProduct | |
|---|---------------------------------|
| ▼ name | Electronic Navigational Chart |
| ▼ (Derived) | |
| (clicked coordinate X) | 20.3° |
| (clicked coordinate Y) | 16° |
| Area (Cartesian) | 1179.4 |
| Area (Ellipsoidal — EPSG:7030) | 13662465887836.5 m ² |
| Closest X | 14° |
| Closest Y | 11.7° |
| Closest vertex X | 14° |
| Closest vertex Y | 11.7° |
| Closest vertex number | 2 |
| Feature ID | 7122 |
| Perimeter (Cartesian) | 159.5 |
| Perimeter (Ellipsoidal — EPSG:7030) | 16814670.1 m |
| Vertices | 15 |
| ► (Actions) | |
| gml_id | E7122 |
| typeOfProductFormat | enc |
| copyright | ECC |
| date | 2023-01-11 |
| name | Electronic Navigational Chart |
| version | 1.22 |
| editionDate | 7 |
| datasetName | GB104704 |
| producerCode | TOD0 |
| issueDate | Fri Jul 12 11:42:04 UTC 2019 |
| editionNumber | 0 |

S-100 products example

2. All S-100 products (S-101, S-102, S-111)



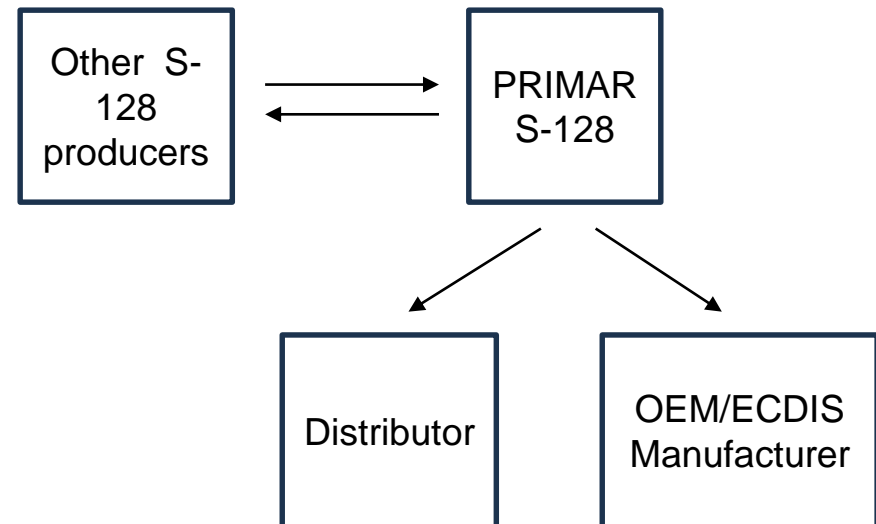
C: Identify and engage external partners



Identify possible cooperation partner(s) for phase 2.

- To test the product outside PRIMAR.
- To understand the role of distributors.
- To demonstrate usage within end user system(s).

1. Distributors
2. OEMs
3. Other S-128 producers



Svein S. Skjaeveland
Manager International Standardization
Phone +47 92662697
svein.skjaeveland@ecc.no
<https://www.primar.org/>

D: Phase 2 preparations

1. Prepare scope for phase 2 of the project.
 - a. Expected data flow structure
 - b. Involved participants (Data producer, Service provider, Distributor, End user and End user system).
 - c. How to test the use of S-128 in an end user system.
 - d. Identifying partner(s) where our S-128 datasets can be tested.
2. Weekly exchange sets and S-128 generation
 - a) Consider how to provide S-128 with the PRIMAR CD service
3. S-128 GML Update datasets
 - a. Investigate policy and solution for providing S-128 as incremental/cumulative updates.
4. S-128 Service component



PRIMAR[®]

Thank you for your attention

Questions?

www.primar.org