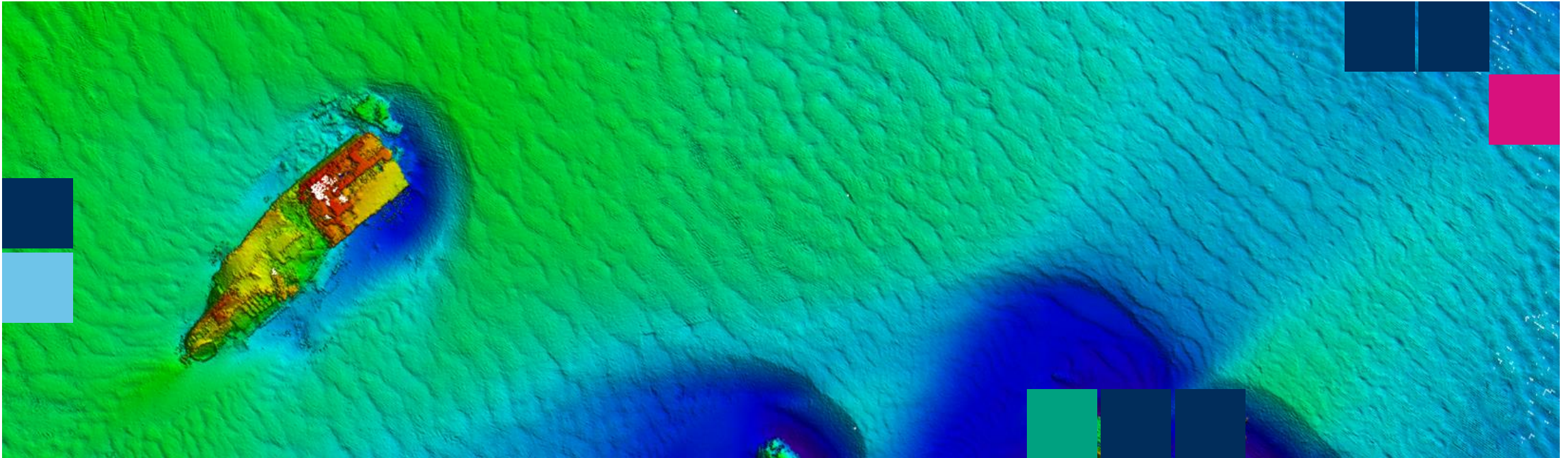


# ADMIRALTY Marine Data Portal

September – 2022



# What is the Marine Data Portal?

The ADMIRALTY Marine Data Portal replaced the INSPIRE Portal in December 2018 as the place to search and download data sets regarding maritime limits and boundaries, ships' routing measures, bathymetry and S100 trial data sets.

It presents us with not only a capability to serve data under our current obligations but provides a platform for future data provision and value-added services.



## The Marine Data Portal Vision:

- › To give people easy and timely access to marine location-based information from seabed to surface to help them with sustainable marine decision making.
- › An organised gateway to our **non-navigation** data and services.



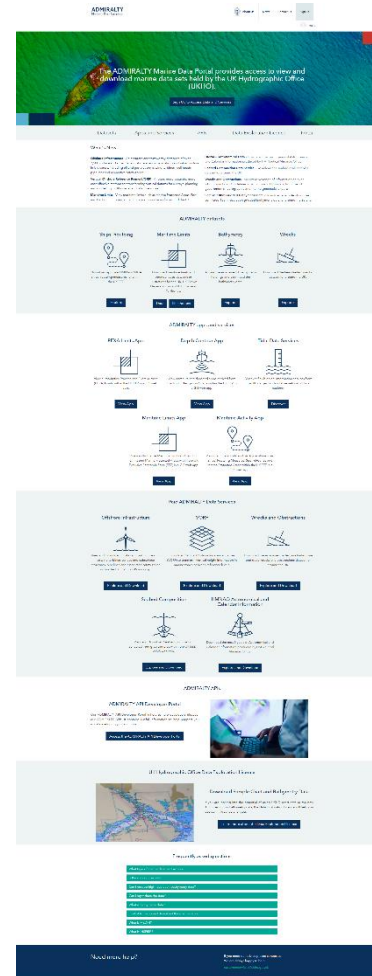
*An organised gateway to our non-navigation data and services.*

## September 2022

### Marine Data Portal

### Non-Navigation Users

### Data & Services



Geo-Data Engineer



Marine Archaeologist



Marine Consultant



Academic Professor



Coastal Engineer

Free Download	Bathymetry Surfaces
Free Download	Maritime Limits
Free Download	Maritime Limit Illustrations
Free Download	Foundation Datasets
Free to View	Foundation Datasets
Paid Download	Foundation Datasets
S-100 Trial Data sets (Free Download)	S-101, 102, 104, 111, 121 and 122.



## ADMIRALTY datasets

### Ships' Routing



Download approved IMO and MCA ships' routing measures for within the UK EEZ.

Explore

### Maritime Limits



Download maritime limits and boundaries as datasets or illustrations for the UK, UK Crown Dependencies and UK Overseas Territories.

Data

Illustrations

### Bathymetry



Access the extensive UK bathymetry holdings and download the bathymetry data.

Explore

### Wrecks



Download the free charted wrecks dataset for around the UK.

Explore

Data is available to download via the ADMIRALTY Datasets section.

All data is free to download and provided with an Open Government Licence.

## Key datasets:

- **Wrecks** – INSPIRE wrecks only charted wrecks in UK with limited attributes (Name of wreck is one of them)
- **Bathymetry (seafloor mapping)** – Over 5000 processed surfaces. These are the output of making survey data ready for use in charting.
- **Maritime Limits** – both data and PDF pictures used as a reference dataset.

Data is around the UK except for Maritime Limits which covers crown dependencies and overseas territories.



**Example User** – Marine Archaeologist working on a impact assessment of a wind farm on the seascape. Needs access to seafloor mapping (bathymetry) and wrecks.



The screenshot displays the Admiralty Maritime Data Solutions website. At the top, there is a navigation menu with links for 'About Us', 'News', 'Contact Us', and 'Sign up'. Below the menu is a search bar and a user profile icon labeled 'Paul'. The main content area features a map of the Isle of Man and surrounding regions, with a blue outline indicating maritime limits. Below the map, there is a section titled 'Isle of Man Maritime Limits' with a 'Data' button. To the right of this section is a 'Full Dataset' dropdown menu with options: Shapefile, Spreadsheet, KML, Excel, File Geodatabase, GeoJSON, and Feature Collection. Below the dropdown menu is an 'About' section with metadata information.

ADMIRALTY  
Maritime Data Solutions

About Us News Contact Us Sign up

Find My Data Paul

Isle of Man Maritime Limits

No license specified Accessible to Everyone 6/12/2019 Feature Service

The limits and boundaries of the UK, UK Overseas Territories and UK Crown Dependencies are available from this website in accordance with Articles 16, 74 and 84 of the United Nations Convention on the Law of the Sea. Limits are calculated from the normal baseline (the low water line on the largest UKHO charts) and limits are maintained by UKHO. Please note that these limits will only be updated annually.

Attributes

Chart

category\_o  
Text

SHOW MORE  
1 Attribute

Full Dataset

- Shapefile
- Spreadsheet
- KML
- Excel
- File Geodatabase
- GeoJSON
- Feature Collection

About

Shared By: UI

Data Source: KML

Tagged with:

View Metadata

Create Webmap

Create a Story

Users can preview a dataset and discover more about the data before choose to download it in a variety of formats which include GeoJSON, KML, Shapefile.



**ADMIRALTY**

Maritime Data Solutions

---

# S100 trial data sets



UK Hydrographic  
Office