

IHO S-100 Working Group

Roles and Association Management by S-100FCB

Presented by KHOA



6.11_Roles and Association Management by S-100FCB (1/7)

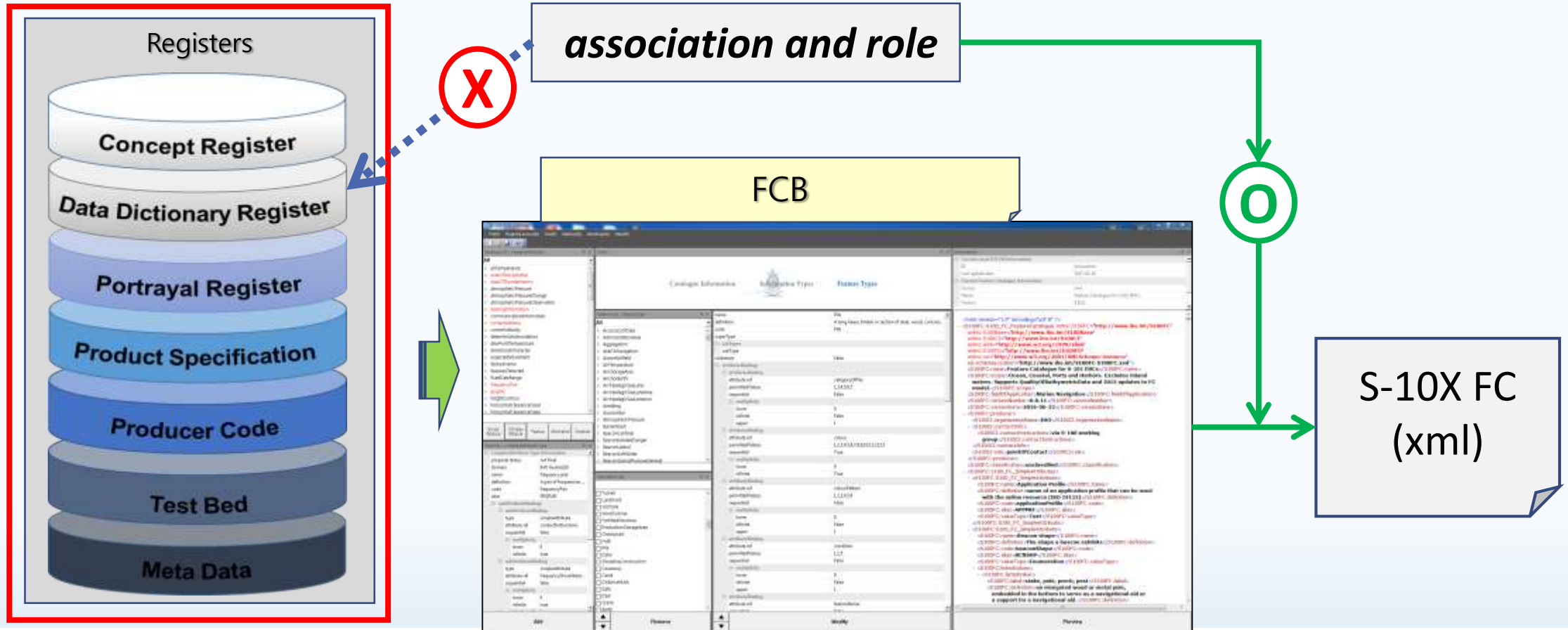
- This paper reports a management process for the feature associations and roles according to the S-100WG3 Action list 8 and 9.

08	3.2	S-100WG2 Action 36: Define the process of managing roles and feature associations to be used during the creation of a Feature Catalogue, and produce guidance on this process - to be included in S-99.	KHOA	Ongoing
09	3.2	S-100WG2 Action 37: Include functionality for managing the creation of the roles and feature associations to be included in a Feature Catalogue in the next iteration of the S-100 FCB.	KHOA / IHO Sec.	Ongoing



6.11_Roles and Association Management by S-100FCB (2/7)

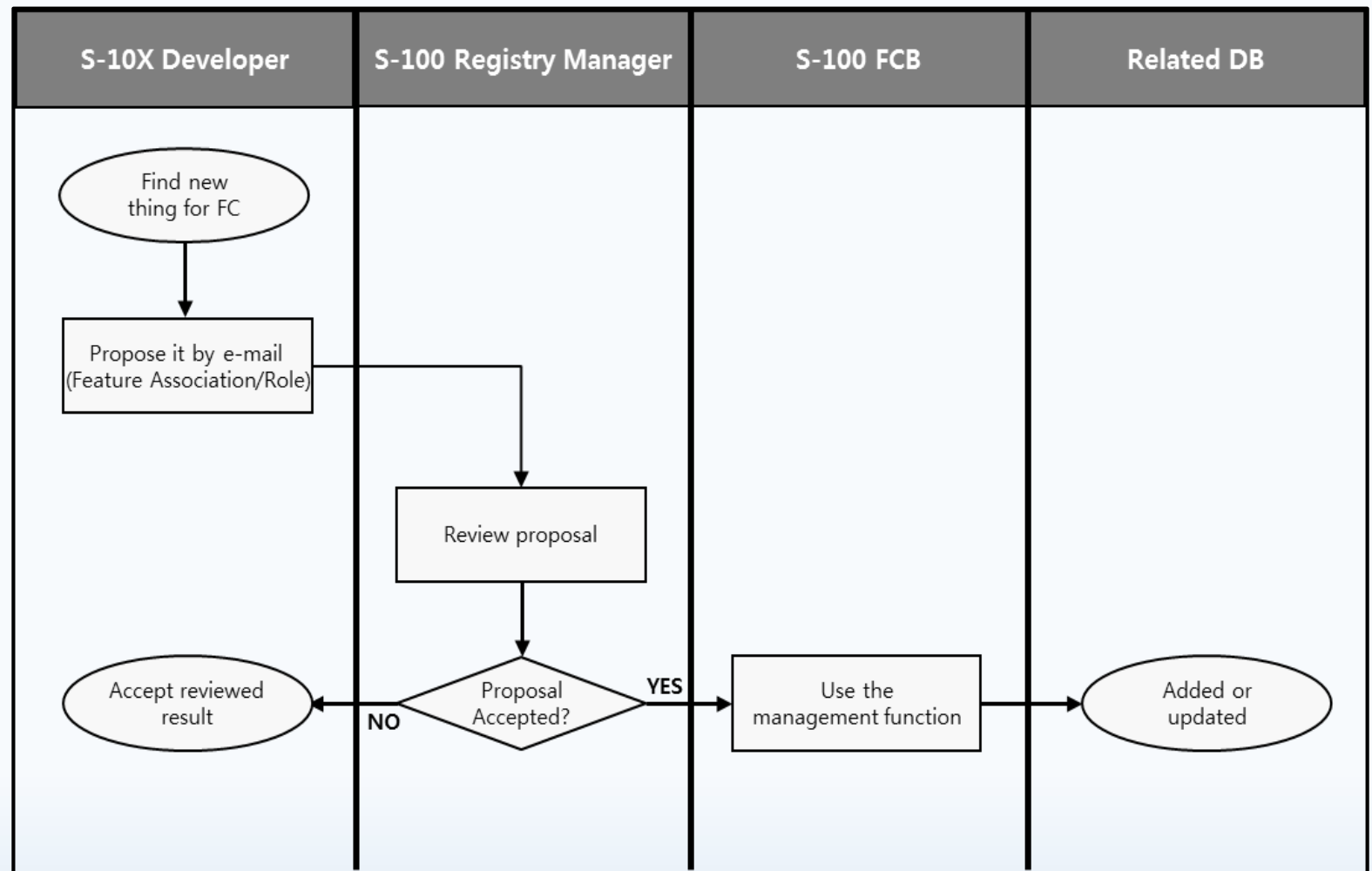
- Management Process



6.11_Roles and Association Management by S-100FCB (3/7)

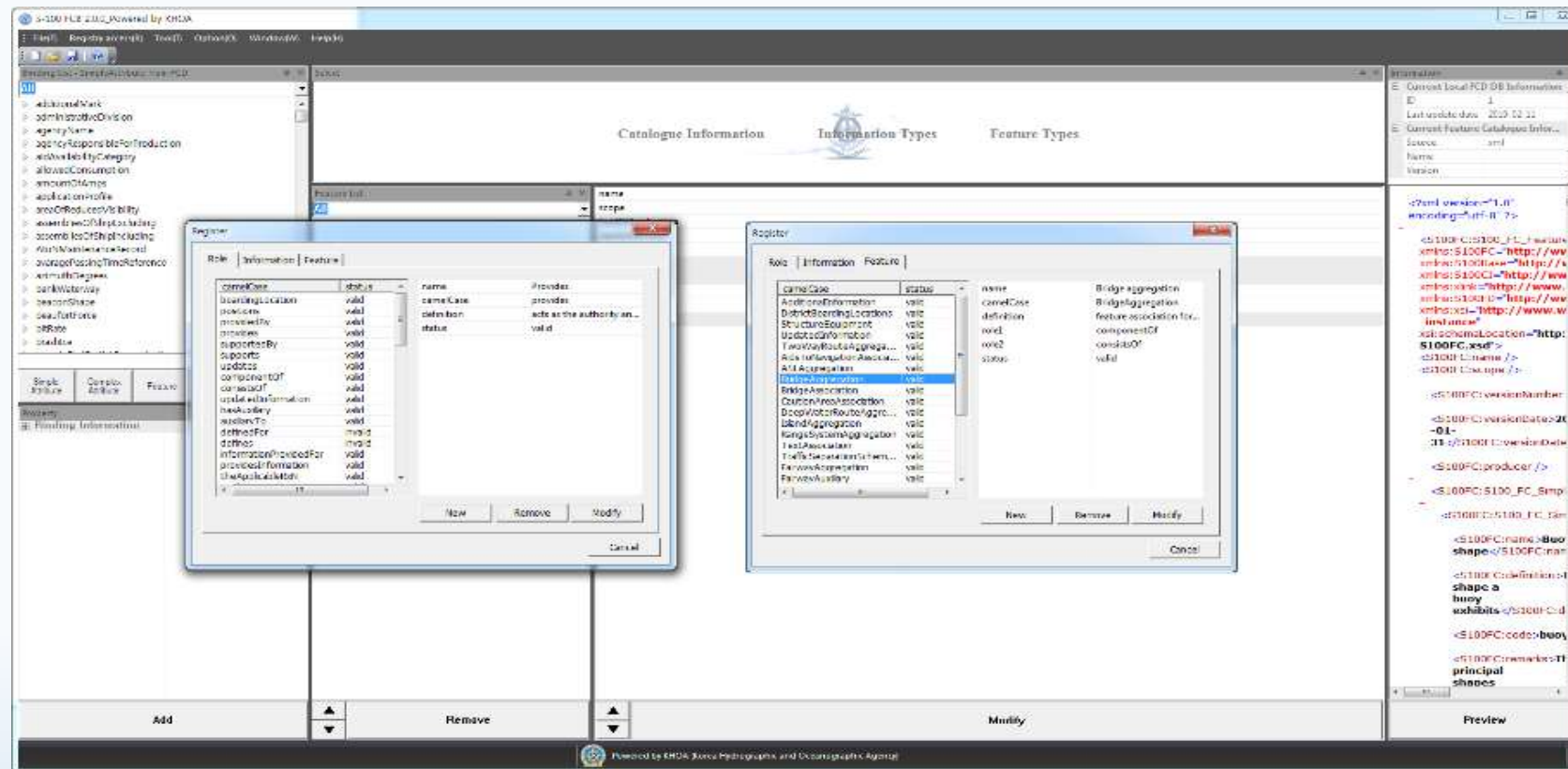
- Management Process

The management function for the Register Manager (RM)



6.11_Roles and Association Management by S-100FCB (4/7)

- Management tool for the Association and role



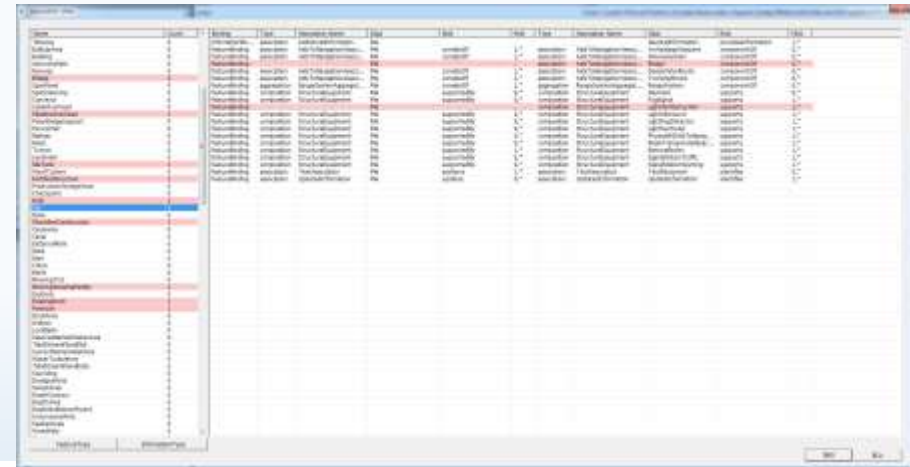
6.11_Roles and Association Management by S-100FCB (5/7)

- Validate function for the association binding

The current S-10X DCEG document designed to present both directions for feature/information association.

→ It can cause some inconsistency such as class, role, and multiplicity for both directions in the document and for the FC as well if the document is significantly large such as S-101 PS especially

A new binding validation tool for the association was developed to discover the discrepancy



The screenshot shows a software application window with a complex data table. The table has multiple columns, including what appears to be a list of features or classes on the left, and various numerical and text values in the main body. Some rows are highlighted in red, indicating specific data points of interest. The interface includes a sidebar on the left with a tree view and a status bar at the bottom.



6.11_Roles and Association Management by S-100FCB (6/7)

- Conclusions
 - a) The management tool for the feature association and role have been implemented in the S-100 FCB and the management process was designed to register or modify items required by S-10X PS
 - b) The validation function for feature/information association for both directions has been introduced to decrease human error which can occur during the DCEG development.



6.11_Roles and Association Management by S-100FCB (7/7)

- Action required of S-100WG
 - a) Note this paper.
 - b) Any comments or questions.

