

Summary of Change Proposals

Presented by SPAWAR

for S100WG4

Feb 2019

4.6 - Catalogue CSS Files

- Modify the schema for *portrayal_catalogue.xml* so that stylesheet files can be enumerated.
 - Currently stylesheet files (CSS) used to modify the SVG symbols are not enumerated within *portrayal_catalogue.xml*
 - All other contents of the portrayal catalogue are enumerated within *portrayal_catalogue.xml* (Symbols, Rules, Linestyles, etc.)
- If approved, will be supported in S100Viewer v1.7

4.6 - Catalogue CSS Files

Before

```
<?xml version="1.0" encoding="ISO-8859-1"?>
<?pccinfo name="S-101" fieldOfApplication="Marine Navigation" scope="Ocean, Coa
Harbors. Excludes Inland waters. Supports QualityOfBathymetricData and 2015 up
versionDate="2018-11-05T00:00:00+0000" user="IHO Testbed" organization="Intern
Hydrographic Organization"?>
<portrayalCatalog xmlns:xsl="http://www.w3.org/2001/XMLSchema" productId="S-101"
  <pixmap/>
  <colorProfiles/>
  <symbols/>
  <lineStyles/>
  <areaFills/>
  <font/>
  <viewingGroups/>
  <foundationMode/>
  <viewingGroupLayers/>
  <displayModes/>
  <displayPlane/>
  <context/>
  <rules/>
</portrayalCatalog>
```

After

```
<?xml version="1.0" encoding="ISO-8859-1"?>
<?pccinfo name="S-101" fieldOfApplication="Marine Navigation" scope="Ocean, Coa
Harbors. Excludes Inland waters. Supports QualityOfBathymetricData and 2015 up
versionDate="2018-11-05T00:00:00+0000" user="IHO Testbed" organization="Intern
Hydrographic Organization"?>
<portrayalCatalog xmlns:xsl="http://www.w3.org/2001/XMLSchema" productId="S-101"
  <pixmap/>
  <colorProfiles/>
  <symbols/>
  <styleSheets>
    <styleSheet id="dayStyle">
      <fileName>daySvgStyle.css</fileName>
      <fileType>StyleSheet</fileType>
      <fileFormat>XML</fileFormat>
    </styleSheet>
    <styleSheet id="duskStyle">
      <fileName>duskSvgStyle.css</fileName>
      <fileType>StyleSheet</fileType>
      <fileFormat>XML</fileFormat>
    </styleSheet>
  </styleSheets>
  <lineStyles/>
  <areaFills/>
  <font/>
  <viewingGroups/>
  <foundationMode/>
  <viewingGroupLayers/>
  <displayModes/>
  <displayPlane/>
  <context/>
  <rules/>
</portrayalCatalog>
```

4.7 - Palette Support for Symbols

- A stylesheet (CSS file) is used to provide colour lookups for SVG symbols
- Desired functionality
 - When the user changes the colour palette, re-render symbols using the appropriate stylesheet
- Issue
 - A unique stylesheet is needed for each colour palette
 - The CSS files can only reference a single stylesheet (svgStyle.css)
 - The schemas provide no relationship between a colour palette and a stylesheet

4.7 - Palette Support for Symbols

- Prior Work
 - S-100WG2-8.9, items 6-7
 - Several mechanisms were proposed at and following TSM6
- Proposal
 - Provide a “css” attribute to each colour palette, identifying the related stylesheet
- Implementation details
 - Simple update to portrayal_catalogue.xml
 - HTML viewers (e.g. portrayal registry): use JavaScript to replace *xml-stylesheet href* with appropriate filename
 - ECDIS: replace *href*, swap css file, or use custom code
- Supported in S100Viewer v1.6

4.7 – Palette Support for Symbols

Before

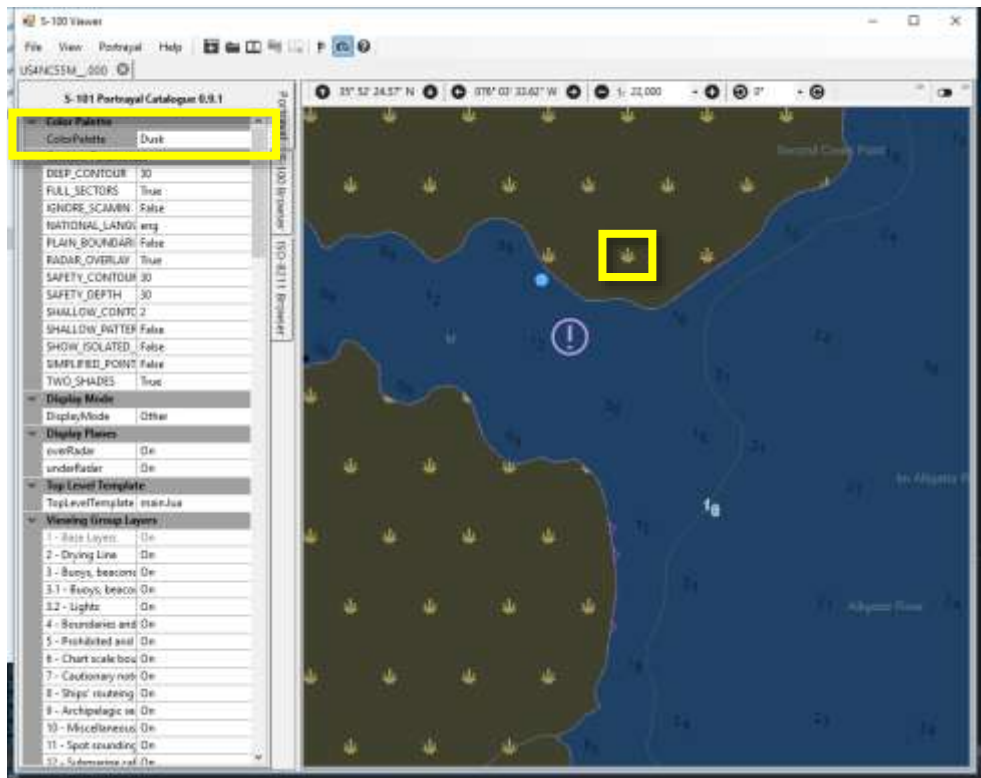
```
<?xml version="1.0" encoding="ISO-8859-1"?>
- <colorProfile xsi:noNamespaceSchemaLocation="s100ColorProfile.xsd" xmlns
  + <colors>
  + <palette name="Day">
  + <palette name="Dusk">
  + <palette name="Night">
</colorProfile>
```

After

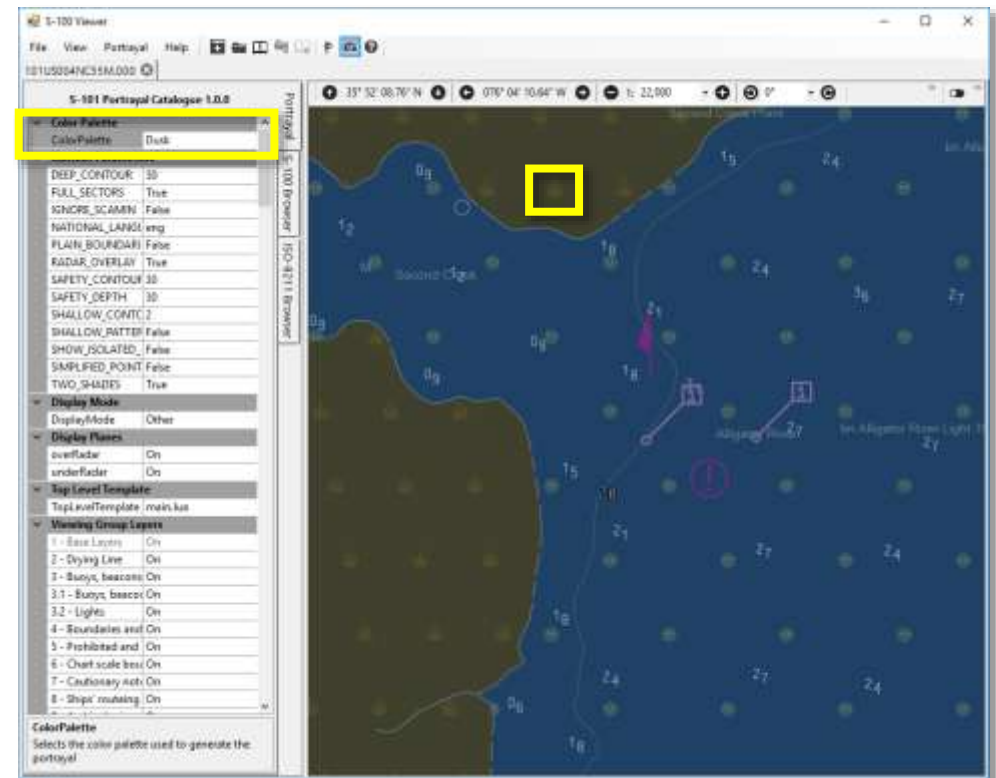
```
<?xml version="1.0" encoding="ISO-8859-1"?>
- <colorProfile xsi:noNamespaceSchemaLocation="s100ColorProfile.xsd" xmlns
  + <colors>
  + <palette name="Day" css="daySvgStyle.css">
  + <palette name="Dusk" css="duskSvgStyle.css">
  + <palette name="Night" css="nightSvgStyle.css">
</colorProfile>
```

4.7 - Palette Support for Symbols

S100Viewer 1.5
(symbols always use Day palette)



S100Viewer 1.6
(symbols use correct palette)



4.8 - Palette Item Transparency

- Desired functionality
 - Allow drawing instructions to vary the transparency value of a colour token based on the selected colour palette
 - Supports S-102 and S-111
 - S-102 DEPDW may be opaque in the day palette and 60% transparent in the dusk palette
- Currently drawing instructions provide a single transparency value which applies regardless of the selected colour palette

4.8 - Palette Item Transparency

- Proposed
 - Specify transparency as an optional attribute of each *PaletteItem* (colour token)
 - Default to opaque
- If approved, will be supported in S100Viewer v1.7

4.8 - Palette Item Transparency

Before

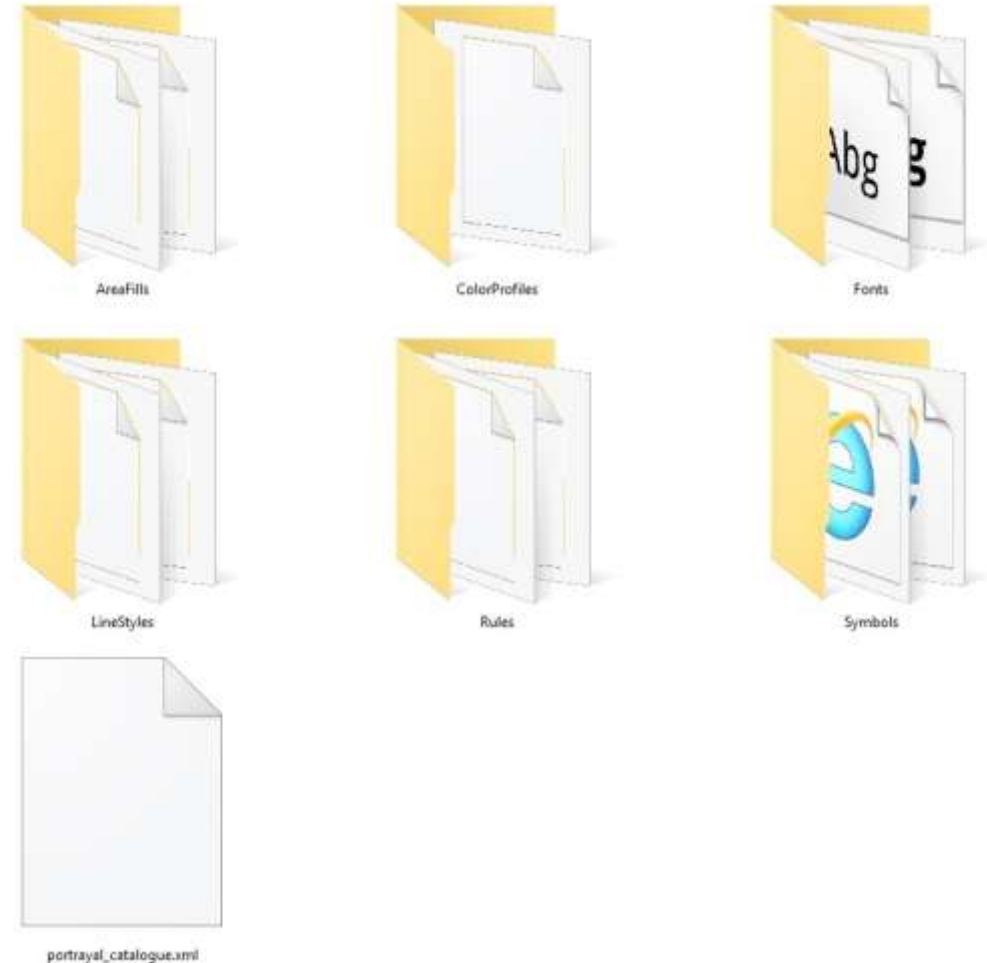
```
<palette name="Dusk" css="Dusk.css">  
  <item token="CHBLK">  
    [...]  
  </item>  
  [...]  
</palette>
```

After

```
<palette name="Dusk" css="Dusk.css">  
  <item  
    token="CHBLK" transparency="0.6">  
    [...]  
  </item>  
  [...]  
</palette>
```

4.9 - Style Sheet Folder

- Currently stylesheets are delivered in the portrayal catalogue "ColorProfiles" folder
- Stylesheets must be applied to the SVG files in the "Symbols" folder
- Proposed
 - Deliver the stylesheets in the "Symbols" folder
 - Update S-100 9-13.2 portrayal library structure
- Required by S100Viewer v1.6



4.10 - ISO-8211 Data Structure Codes

- C2IT and C3IT data descriptive fields (10a-5.4.2 / 10a-5.4.3) are incorrect
 - Presented at TSM6
 - Datasets created using the values shown in Part 10a will not load
- Proposed
 - Change the indicated values to “1”

10a-5.4.2 2-D Integer Coordinate Tuple field structure

Field Tag: C2IT	Field Name: 2-D Integer Coordinate Tuple
-----------------	--

Data Descriptive Field

2100; &[]2-D Integer Coordinate Tuple▲YCOO!XCOO▲(2b24)▼

10a-5.4.3 3-D Integer Coordinate Tuple field structure

Field Tag: C3IT	Field Name: 3-D Integer Coordinate Tuple
-----------------	--

Data Descriptive Field

3100; &[]3-D Integer Coordinate Tuple▲VCID!YCOO!XCOO!ZCOO▲(b11, 3b24)▼