



# Test Dataset SG Update

S-101 PT Chair Thomas RICHARDSON

**S-101PT12-5.3**



IHO

# PROGRESS

International  
Hydrographic  
Organization

- Since PT11 the sub-group has made edits and updates to a number of the S-101 Test Datasets the cells and associated documents are held in Github

[S-101-Test-Datasets/S-101\\_Test\\_DataSets/cells at main · iho-ohi/S-101-Test-Datasets \(github.com\)](https://github.com/iho-ohi/S-101-Test-Datasets)

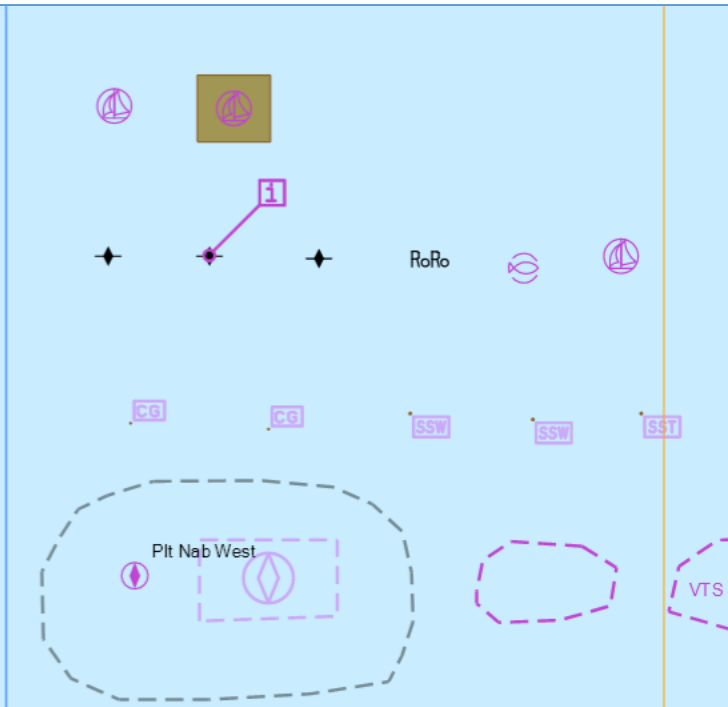
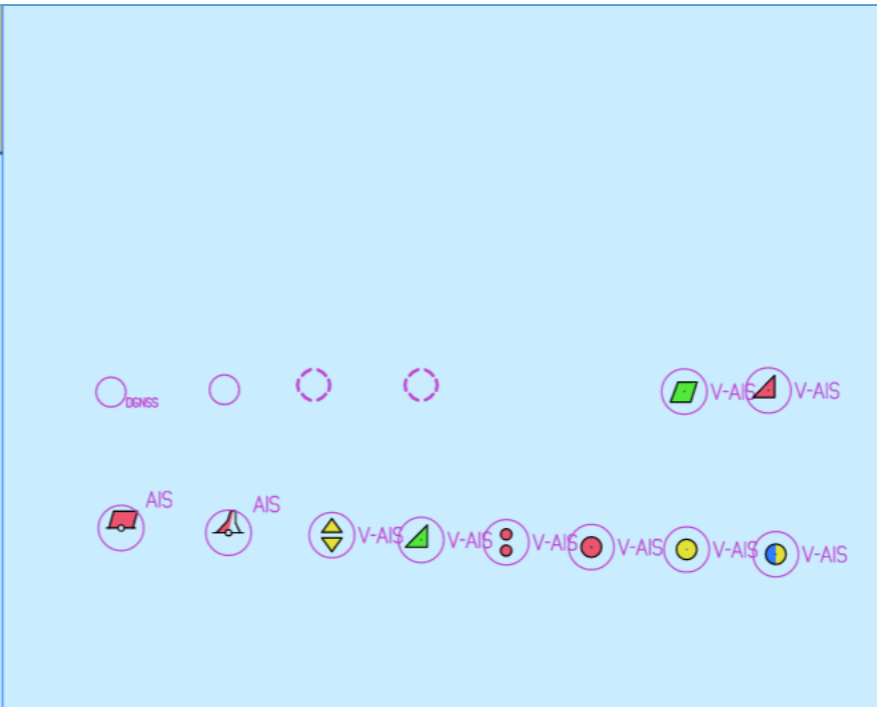
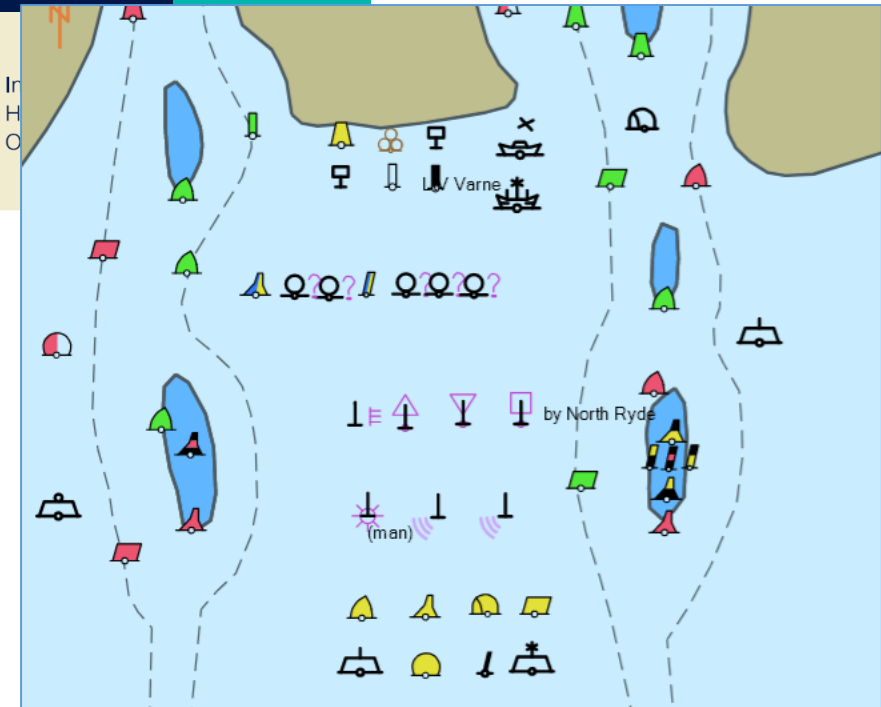
- An additional dataset containing numerous combinations of multiple languages has been created (DS0001)
- Progress with upgrading cells to S-101 1.2.0 has been delayed by the availability of the Feature Catalogue and the availability of Production Tools with 1.2.0 support
- We now have a small group of dataset editors – more volunteers are welcome!

IC-ENC – Laura AU – Matt SE – Klas Primar - Mikus



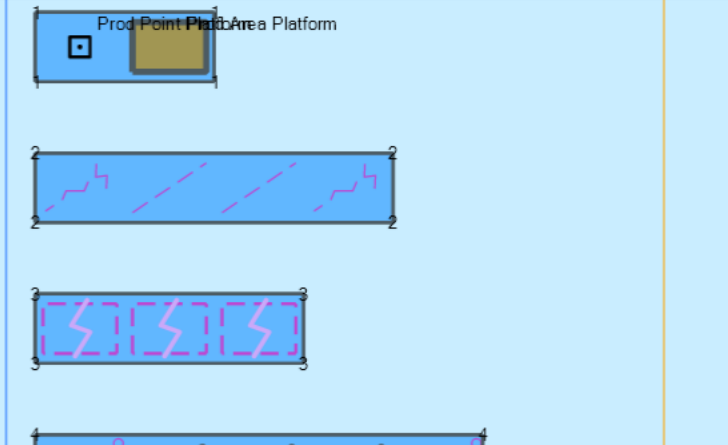
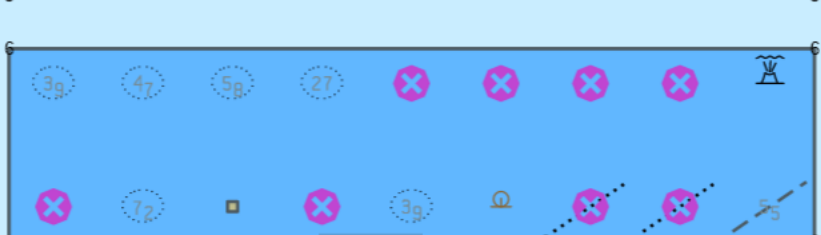
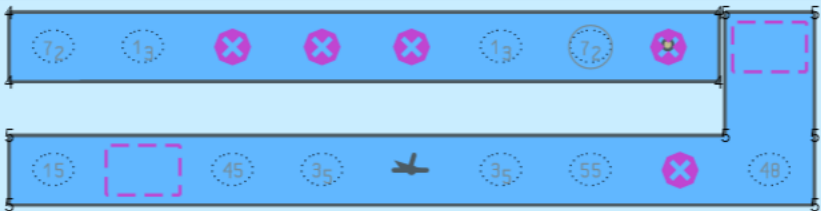
IHO

# CELLS DISPLAYED IN SHORE ECDIS



|   |    |    |   |    |    |    |    |    |
|---|----|----|---|----|----|----|----|----|
| M | Cy | Si | S | St | G  | P  | Cb | R  |
| R | Co | Sh | R | R  | R  | R  | S  | S  |
| S | Co | Sh | M | Cy | Si | St | St | SR |

|                            |
|----------------------------|
| SM Sh                      |
| R / Co / R / Co            |
| R / Co / S Sh / S / R / Co |

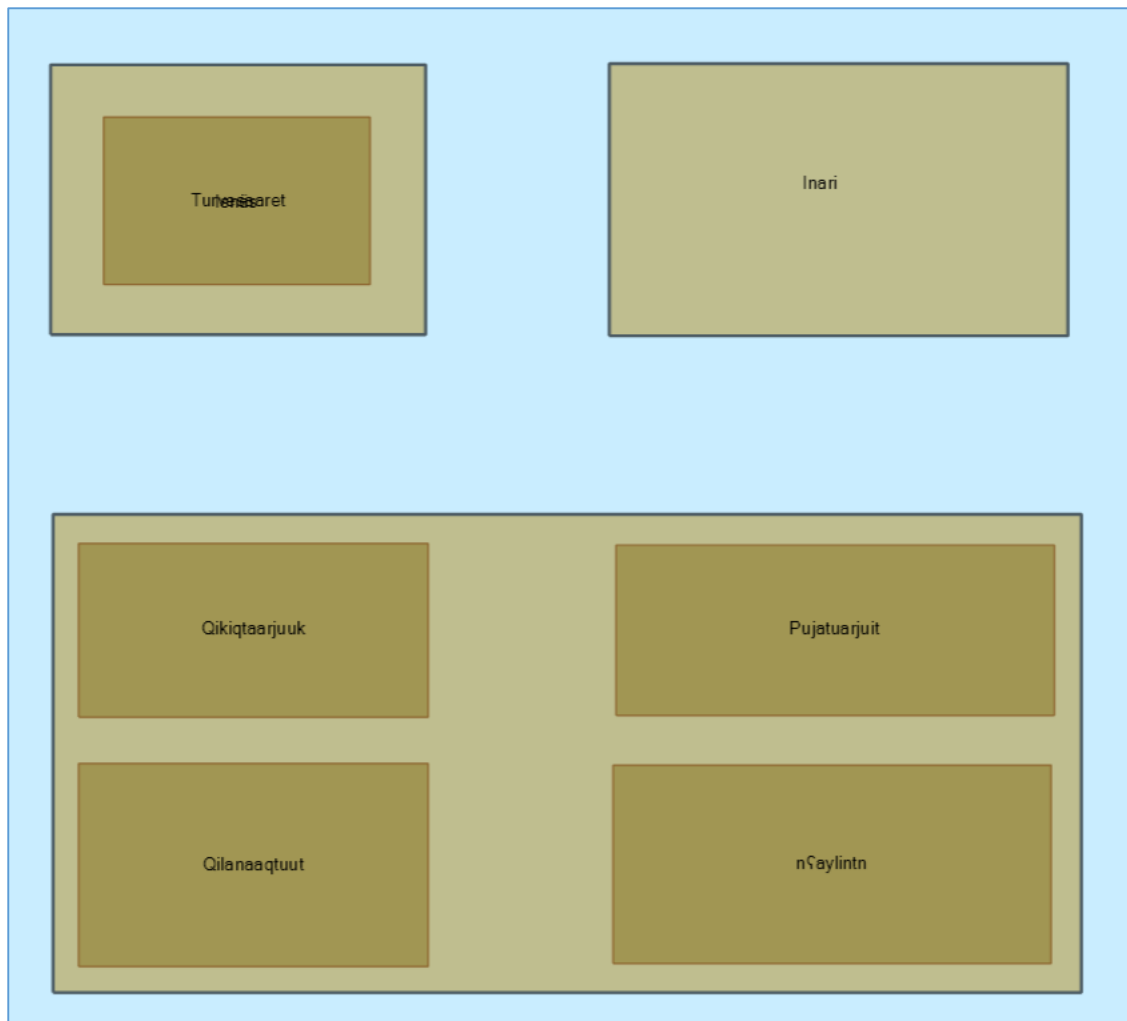




IHO

# LANGUAGES

International  
Hydrographic  
Organization



| 101AA00DS0001.000             |  |               |        |
|-------------------------------|--|---------------|--------|
| Navigational System of Marks  |  | M_NSYS        |        |
| <b>Built-Up Area</b>          |  | <b>BUAARE</b> |        |
| Land Area                     |  | LNDARE        |        |
| Data Coverage                 |  | M_COVR        |        |
| <b>Built-Up Area</b> (BUAARE) |  |               |        |
| <u>Attributes</u>             |  |               |        |
| Category of Built-Up Area     |  | Town          | CATBUA |
| Feature Name                  |  |               |        |
| Display Name                  |  | True          |        |
| Language                      |  | iku           |        |
| Name                          |  | nSaylintn     | OBJNAM |
| <u>Geometries</u>             |  |               |        |
| Surface                       |  |               |        |
| + Spatial                     |  |               |        |



IHO

WAY AHEAD

International  
Hydrographic  
Organization

- An updated release of CARIS HPD on the 21<sup>st</sup> of Feb will allow work to progress migrating test cells to S-101 1.2.0, this will be a focus for the group
- The cells will be validated in 7Cs Analyzer
- S-164 cells will not be migrated at this time but will be for 2.0.0
- Funding has been explored to contract the upgrade to 2.0.0 however the timeframe for this remains dependent on a 1.2.0 Feature Catalogue and Production Software support so early availability of a Feature Catalogue is a key dependency



**IHO**

International  
Hydrographic  
Organization

**QUESTIONS ?**