



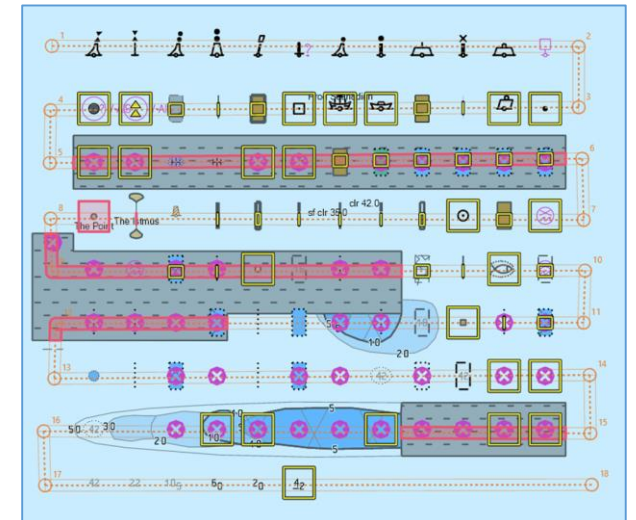
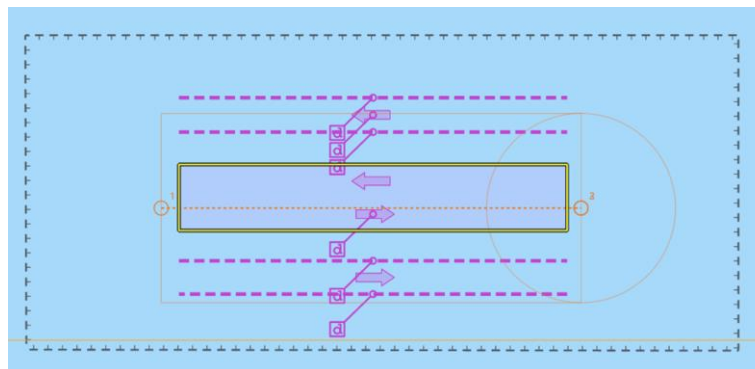
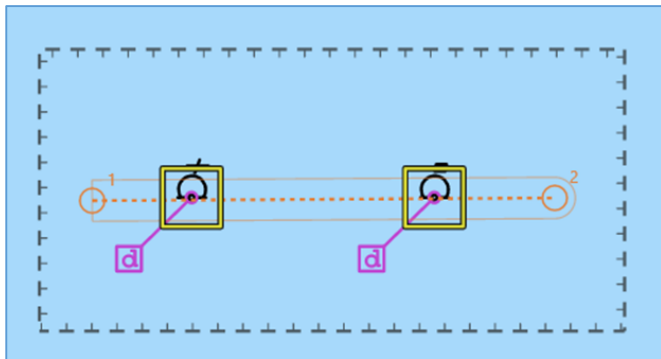
IHO

International
Hydrographic
Organization

S-101 Test Dataset Progress

S-101 PT Chair Thomas RICHARDSON

17 Jul 2023





IHO

OVERVIEW

International
Hydrographic
Organization

- An initial set of 22 S-101 Test Datasets were created in 2022 these are structured based on DCEG sections and seek to include most feature/attribute combinations to support development and testing of the S-101 Portrayal Catalogue
- In early 2023 these were published conforming to S-101 1.1.0 and minor modifications made to reflect changes to the data model, we continue to refine these based on the needs of the Portrayal SG (S-101PT resources)
- A contract has been let by IHO to Geomod to convert the current S-64 TDS and S-58 Critical Error Test Datasets



IHO 15 DATASETS

International
Hydrographic
Organization

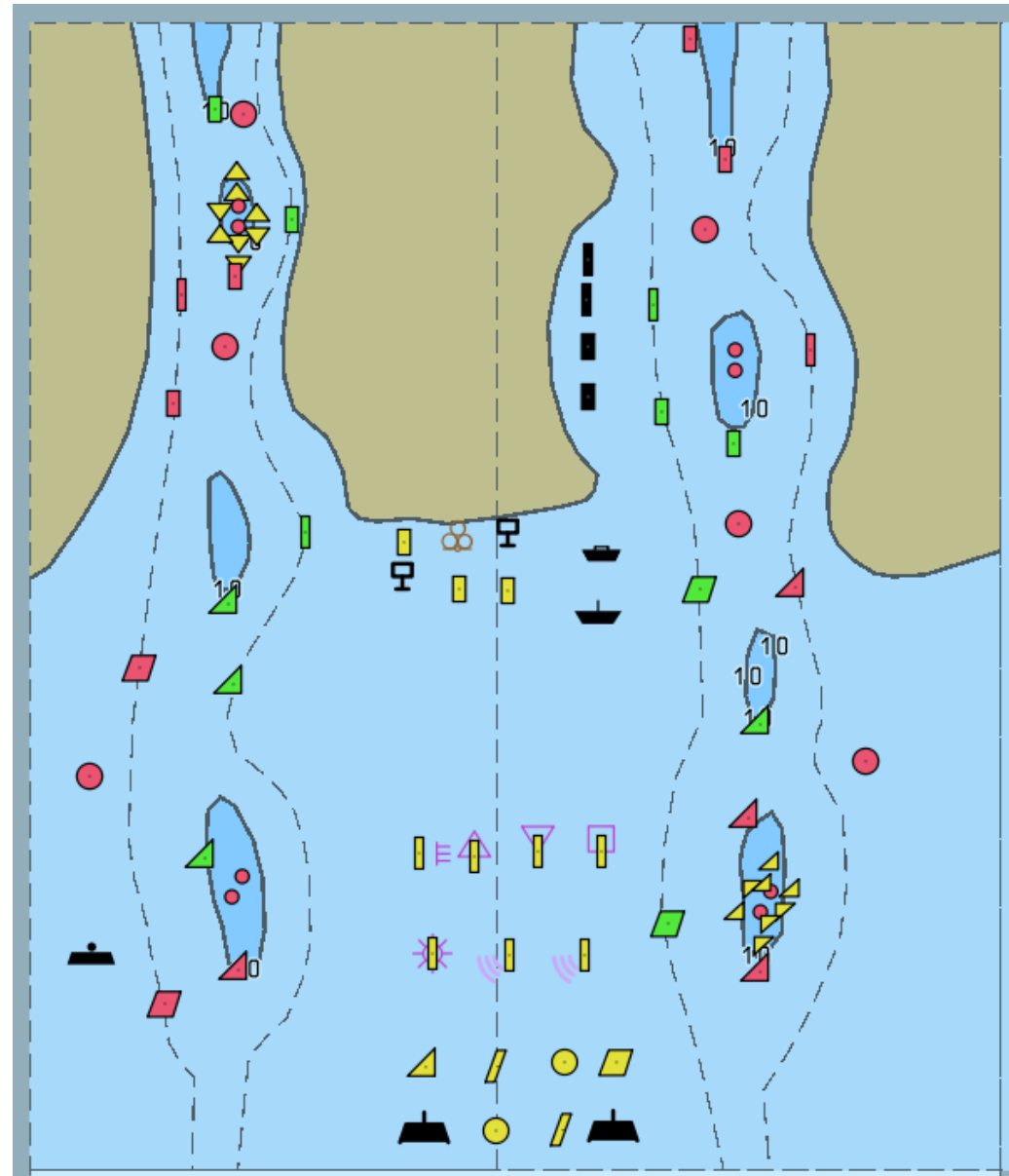
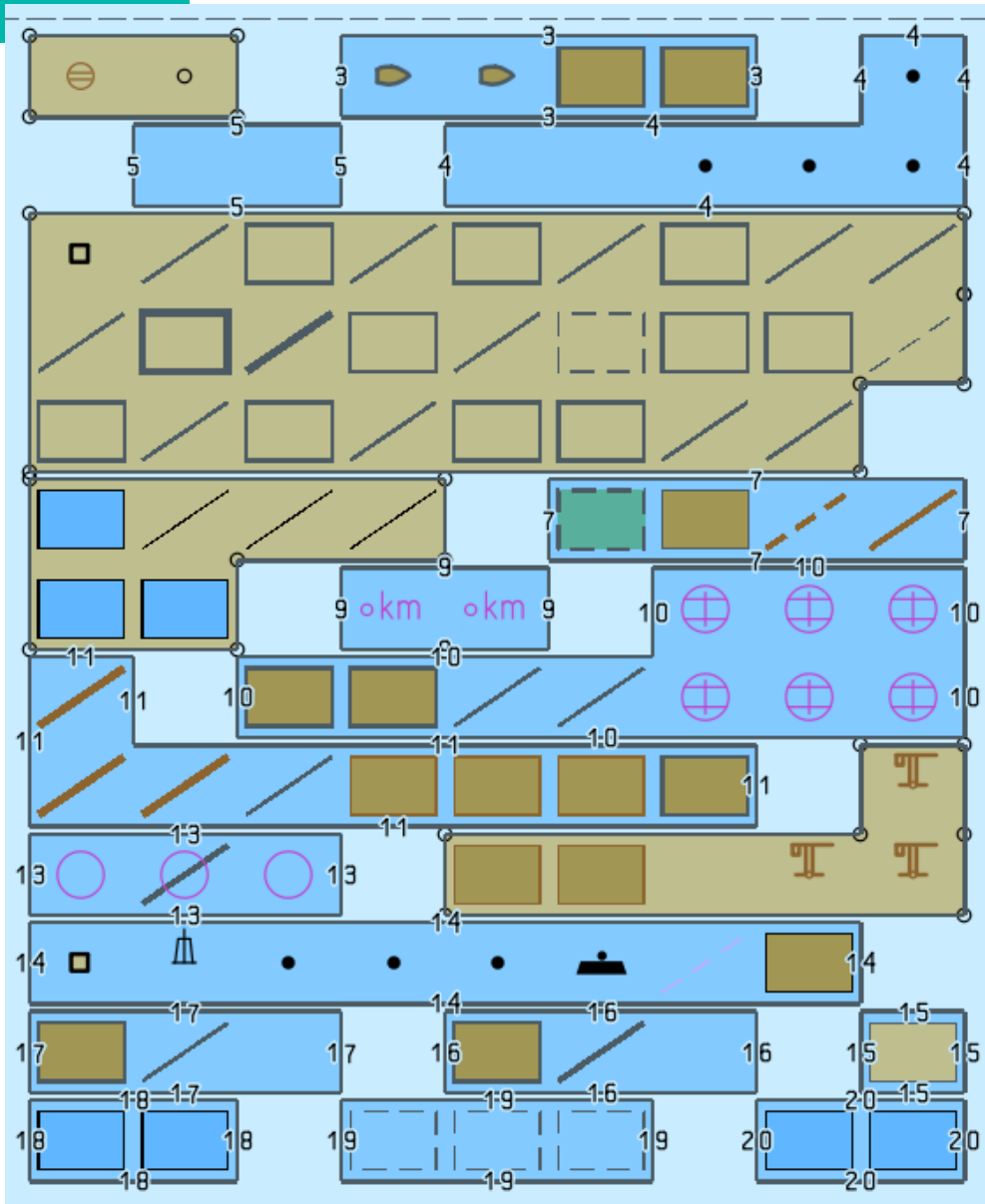
The image displays 15 distinct panels, each representing a different dataset of hydrographic symbols and chart elements. The panels are arranged in a grid-like fashion, with some overlapping or adjacent to each other. The symbols include:

- Panel 1 (Top Left):** A detailed plan view of a harbor or narrow waterway, showing various navigational markers such as buoys, lights, and structures in various colors (red, green, yellow, black).
- Panel 2 (Top Middle-Left):** A series of purple circles and diamonds, some solid and some hollow, arranged in a horizontal line.
- Panel 3 (Top Middle-Right):** Symbols for a RoRo (Roll-on/Roll-off) area, including a diamond with a horizontal line, a diamond with a vertical line, and a square with a diagonal line, accompanied by the text "RoRo".
- Panel 4 (Top Right):** A series of colorful, teardrop-shaped symbols (green, yellow, red, purple) arranged in a curved line, possibly representing a depth soundings or a specific navigational feature.
- Panel 5 (Middle Left):** A series of horizontal lines with numbers (1, 2, 3, 4, 5) written below them, representing depth soundings or a specific chart element.
- Panel 6 (Middle Middle-Left):** A series of horizontal lines with numbers (1, 2, 3, 4, 5, 6) written below them, representing depth soundings or a specific chart element.
- Panel 7 (Middle Middle-Right):** A series of horizontal lines with numbers (1, 2, 3, 4, 5, 6) written below them, representing depth soundings or a specific chart element.
- Panel 8 (Middle Right):** A complex diagram showing a plan view of a harbor or narrow waterway, overlaid with a grid of numbers (1-10) and various symbols, possibly representing a depth soundings or a specific chart element.
- Panel 9 (Bottom Left):** A series of horizontal lines with numbers (3, 4, 5, 6, 7, 8, 9, 10, 11, 14) written below them, representing depth soundings or a specific chart element.
- Panel 10 (Bottom Middle-Left):** A series of horizontal lines with numbers (3, 4, 5, 6, 7, 8, 9, 10, 11, 14) written below them, representing depth soundings or a specific chart element.
- Panel 11 (Bottom Middle-Right):** A series of horizontal lines with numbers (3, 4, 5, 6, 7, 8, 9, 10, 11, 14) written below them, representing depth soundings or a specific chart element.
- Panel 12 (Bottom Right):** A series of horizontal lines with numbers (3, 4, 5, 6, 7, 8, 9, 10, 11, 14) written below them, representing depth soundings or a specific chart element.
- Panel 13 (Bottom Far Right):** A series of horizontal lines with numbers (3, 4, 5, 6, 7, 8, 9, 10, 11, 14) written below them, representing depth soundings or a specific chart element.



IHO EXAMPLES

International
Hydrographic
Organization





IHO

PROGRESS ON S-64

International
Hydrographic
Organization

- Geomod have converted all base datasets, and these are currently being reviewed
- See further slides with examples



IHO

S-64 3.3.1 PAPER CHART AND SIMPLIFIED

International
Hydrographic
Organization

- S-101 FC 1.1.0 PC 1.1.2
- Cell GB4X0001
- ShoreECDIS 1.3.0.0 June 06 2023

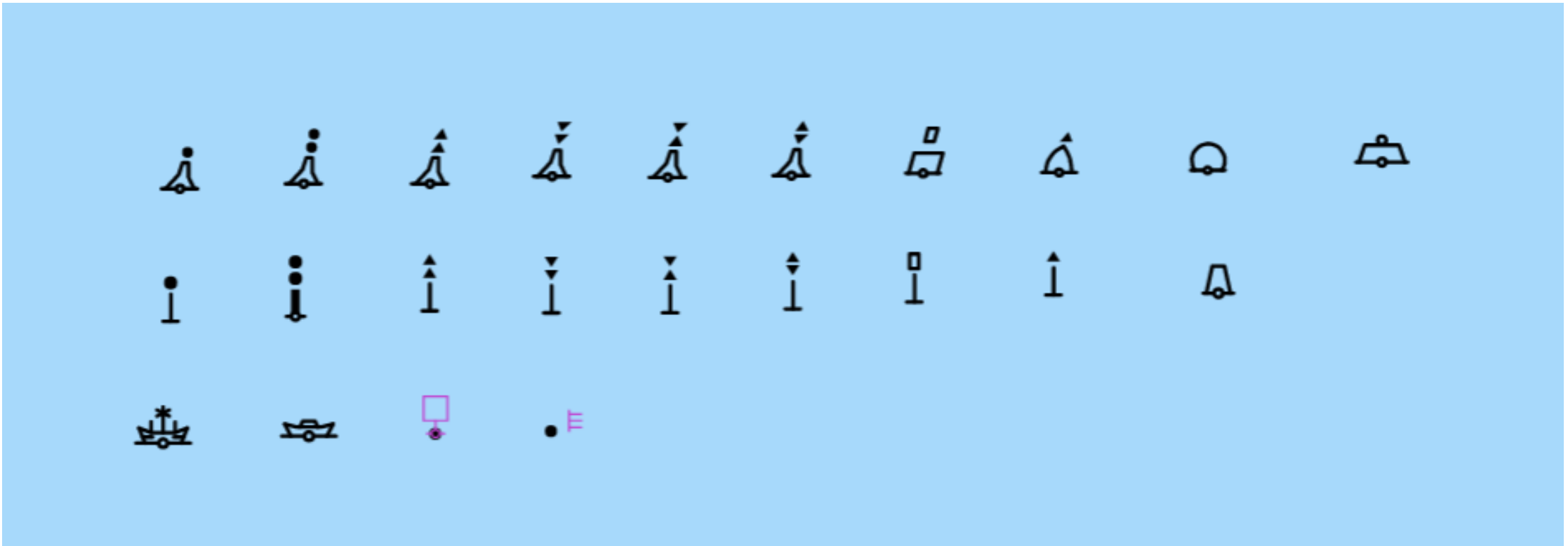


IHO

3.3.1 A) DATASET STATUS ACCEPT

International
Hydrographic
Organization

- Obs 1 EWMB to be added (Dataset Edit)



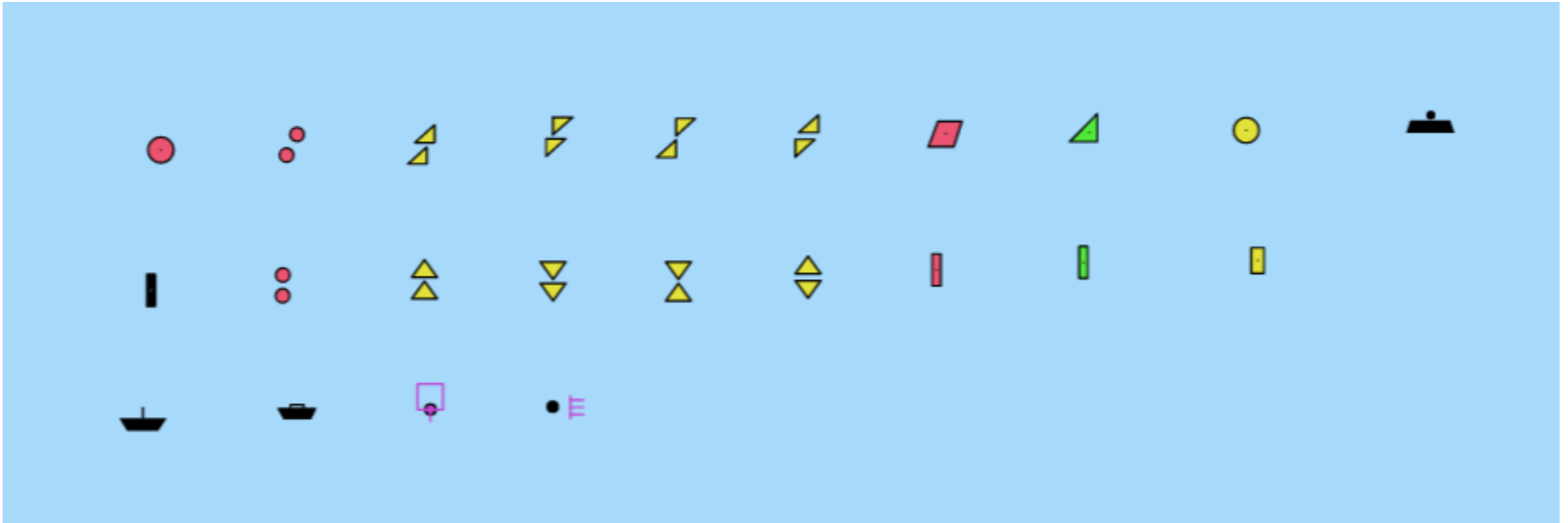


IHO

3.3.1 B) DATASET STATUS ACCEPT

International
Hydrographic
Organization

- Obs 1 EWMB to be added (Dataset Edit)





IHO

S-64 3.3.2 SYMBOLISED AND PLAIN BOUNDARIES

International
Hydrographic
Organization

- S-101 FC 1.1.0 PC 1.1.2
- Cell GB4X0001
- ShoreECDIS 1.3.0.0 June 06 2023

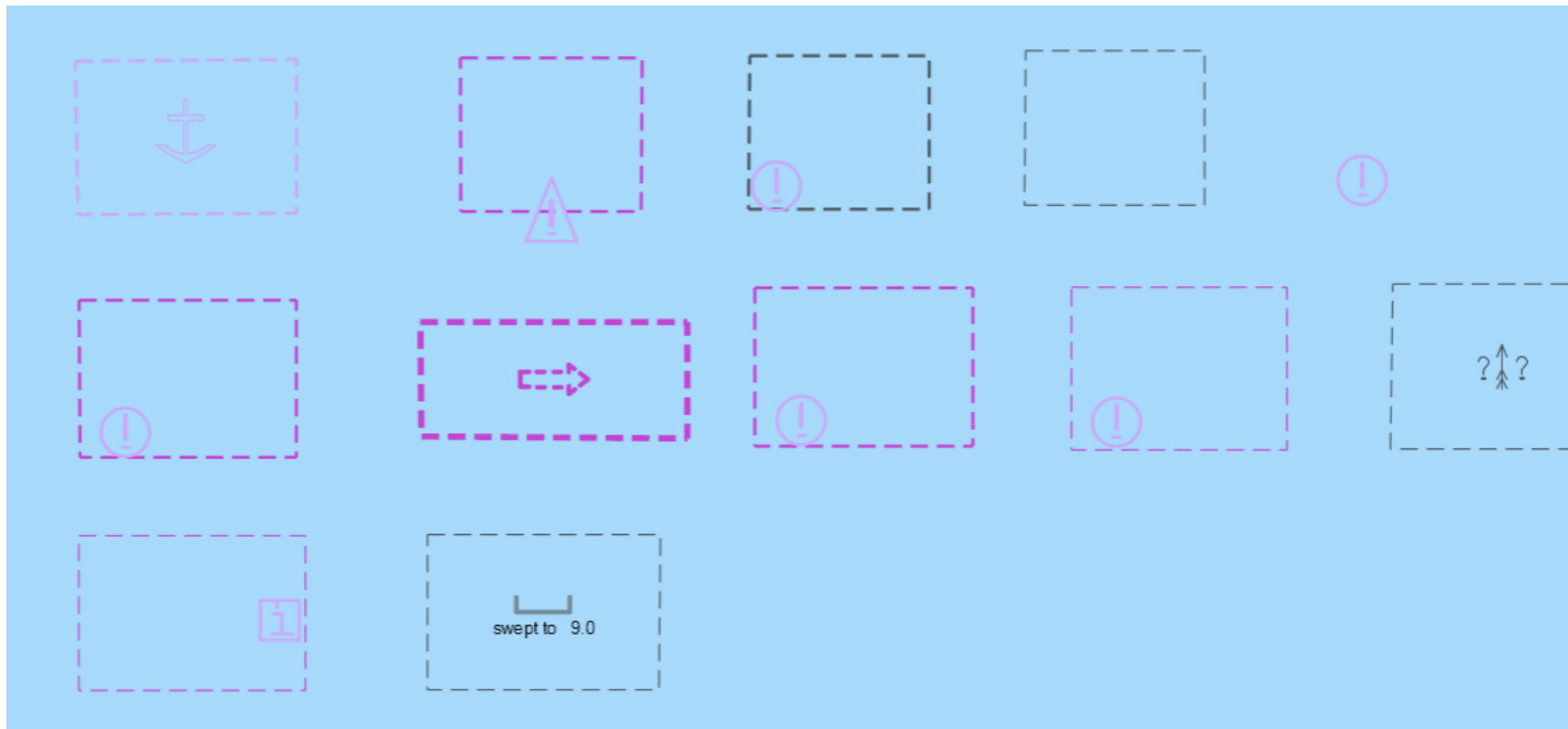


IHO

3.3.2 A) 1) DATASET STATUS REVIEW NEEDED

International
Hydrographic
Organization

- Obs 2 Objects missing and different symbolisation



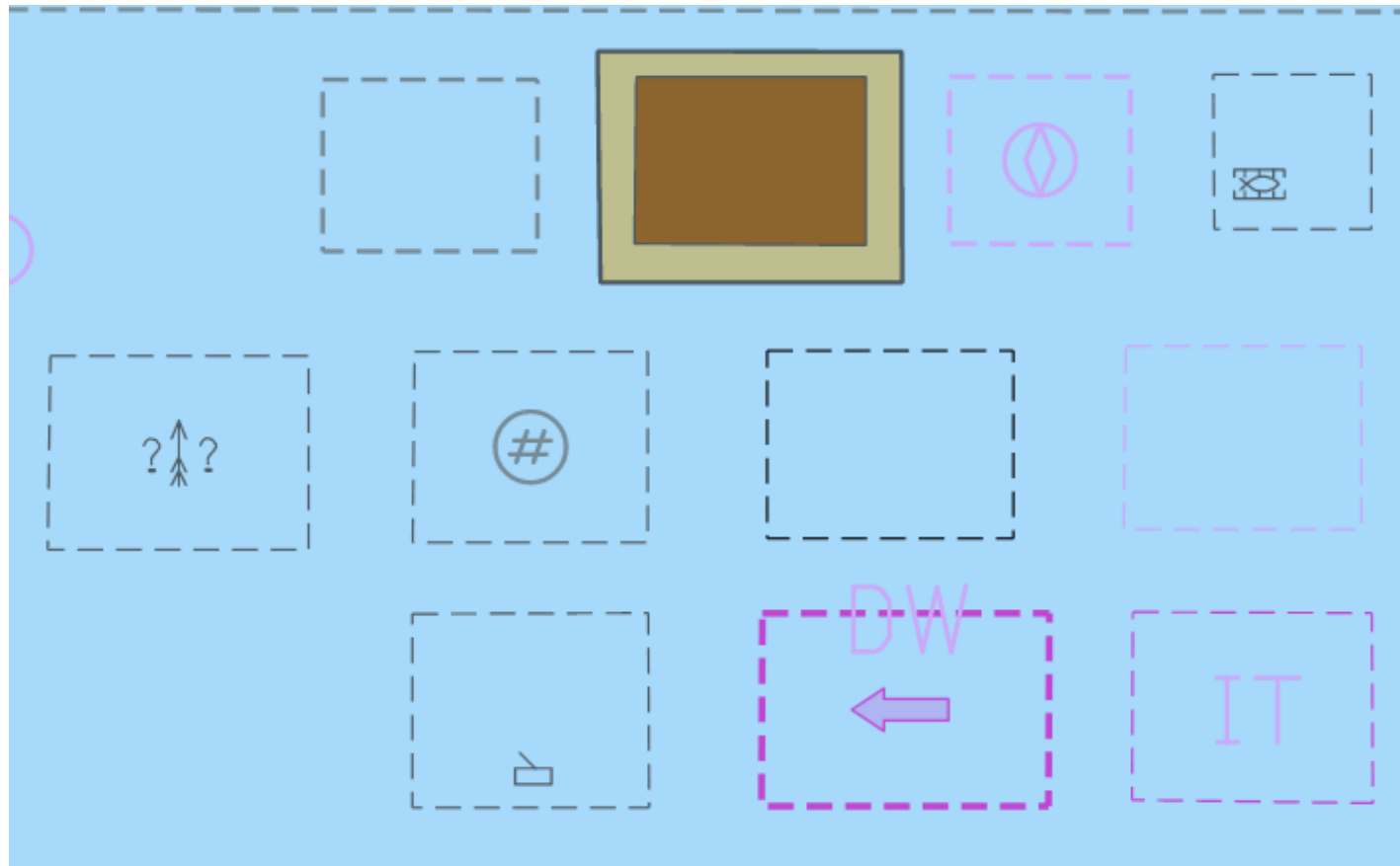


IHO

International
Hydrographic
Organization

3.3.2 a) 2) Dataset Status REVIEW NEEDED

- Obs 2 Object missing, symbols differ, note new foul symbol but pilot boarding place has symbol for district



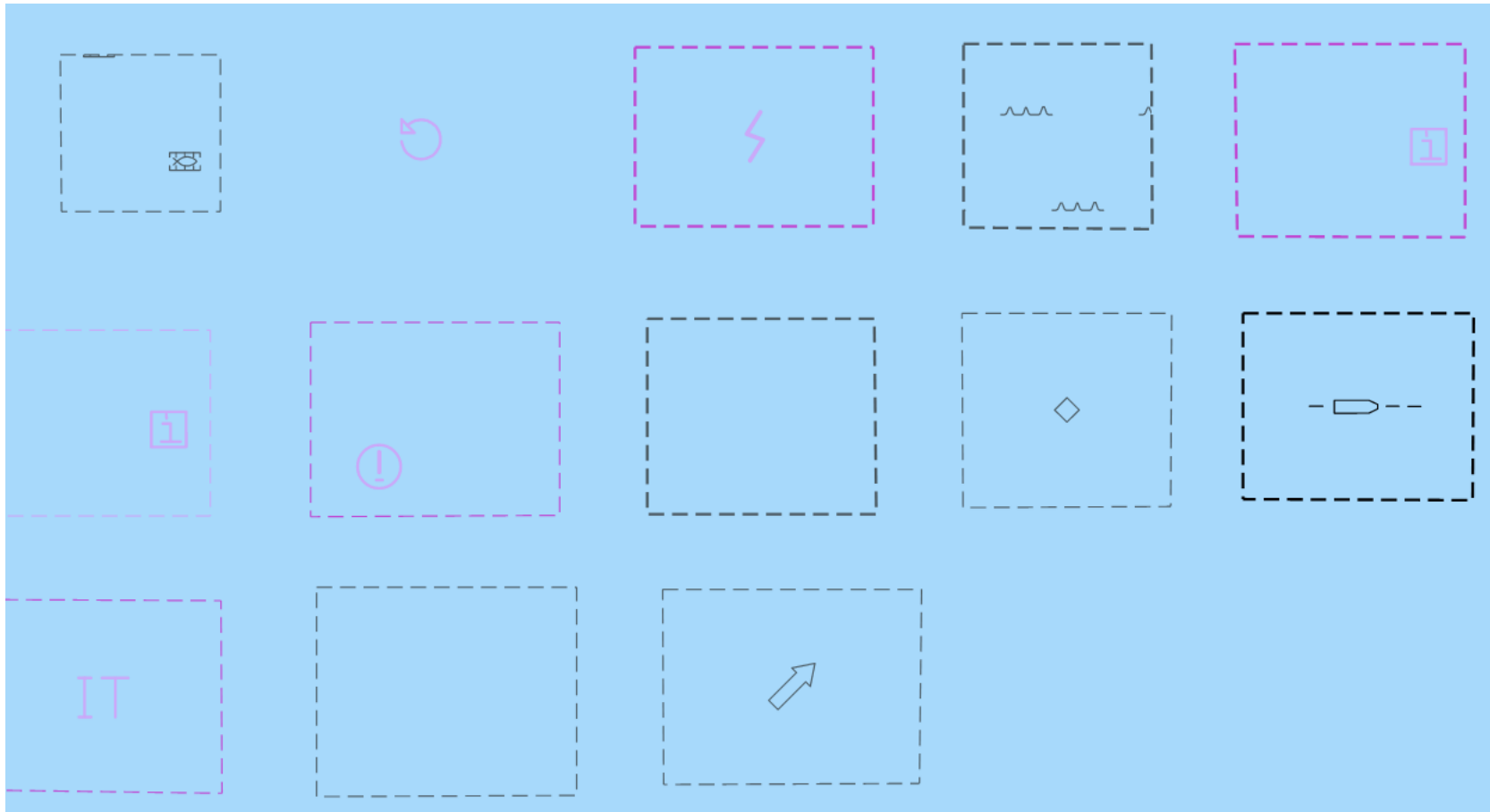


IHO

International
Hydrographic
Organization

3.3.2 a) 3) Dataset Status ACCEPT

- Note - Magvar symbol not shown due to scale



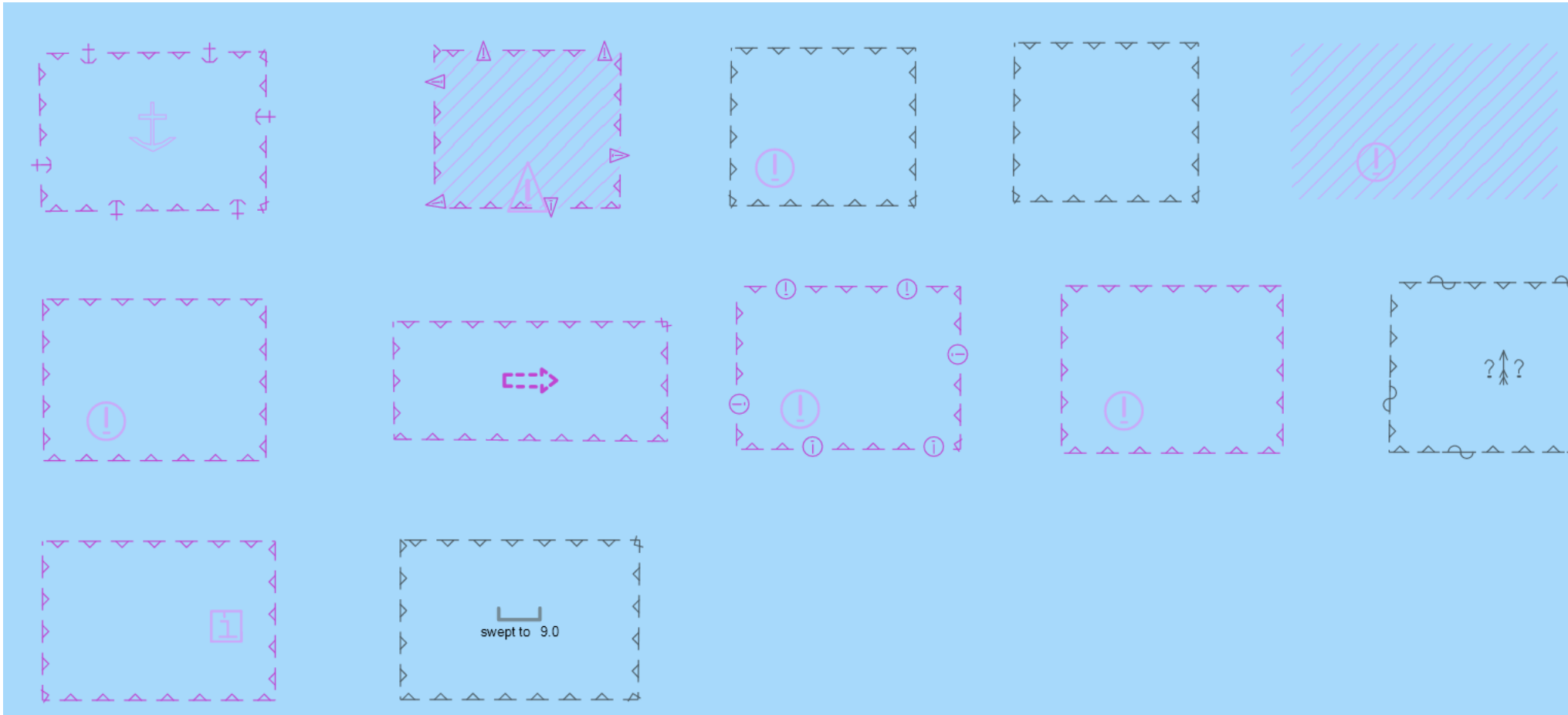


IHO

3.3.2 B) 1) DATASET STATUS REVIEW NEEDED

International
Hydrographic
Organization

- Obs 2 Objects missing and different symbolisation



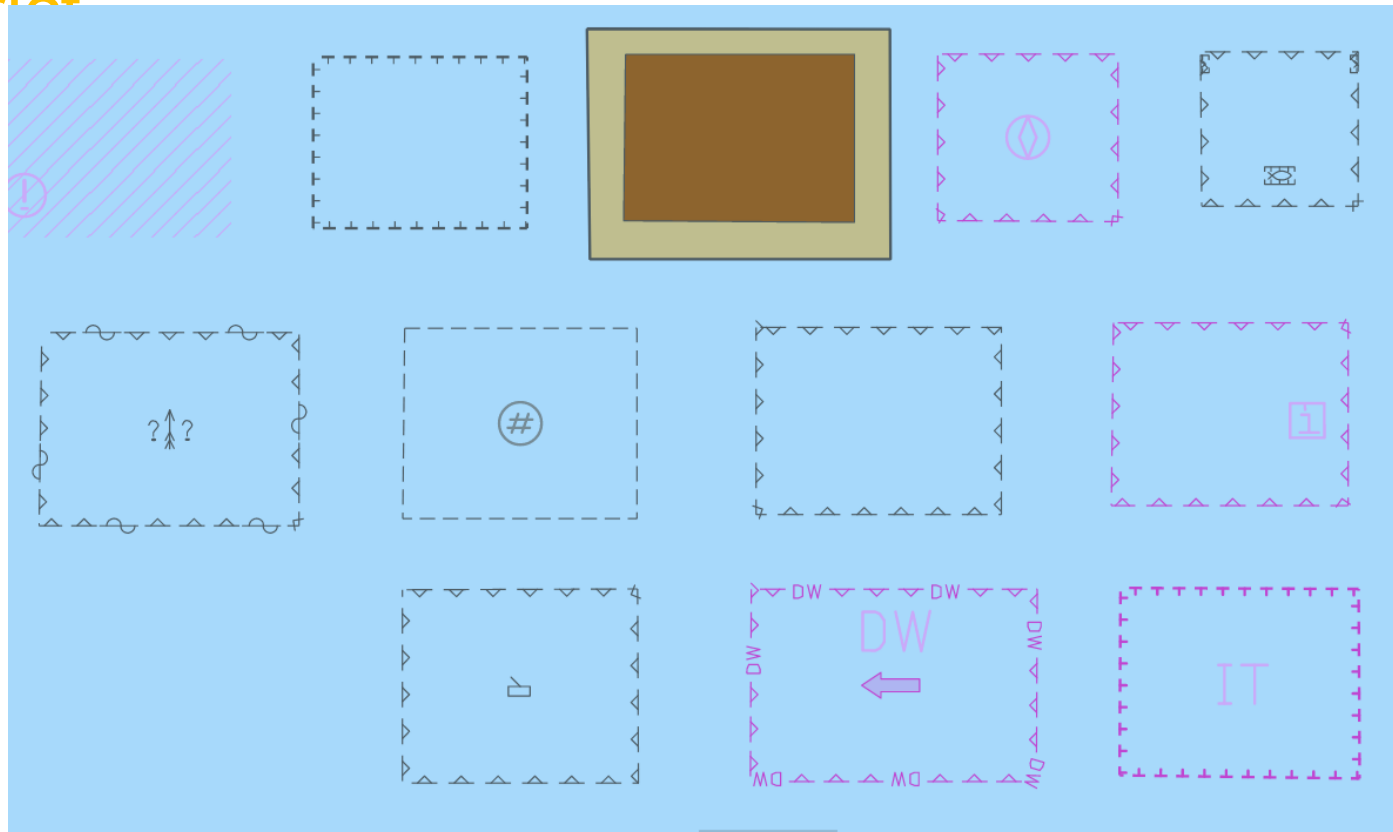


IHO

International
Hydrographic
Organization

3.3.2 b) 2) Dataset Status REVIEW NEEDED

- Obs 2 Object missing, symbols differ, note new foul symbol (missing complex linestyle) but pilot boarding place has symbol for district



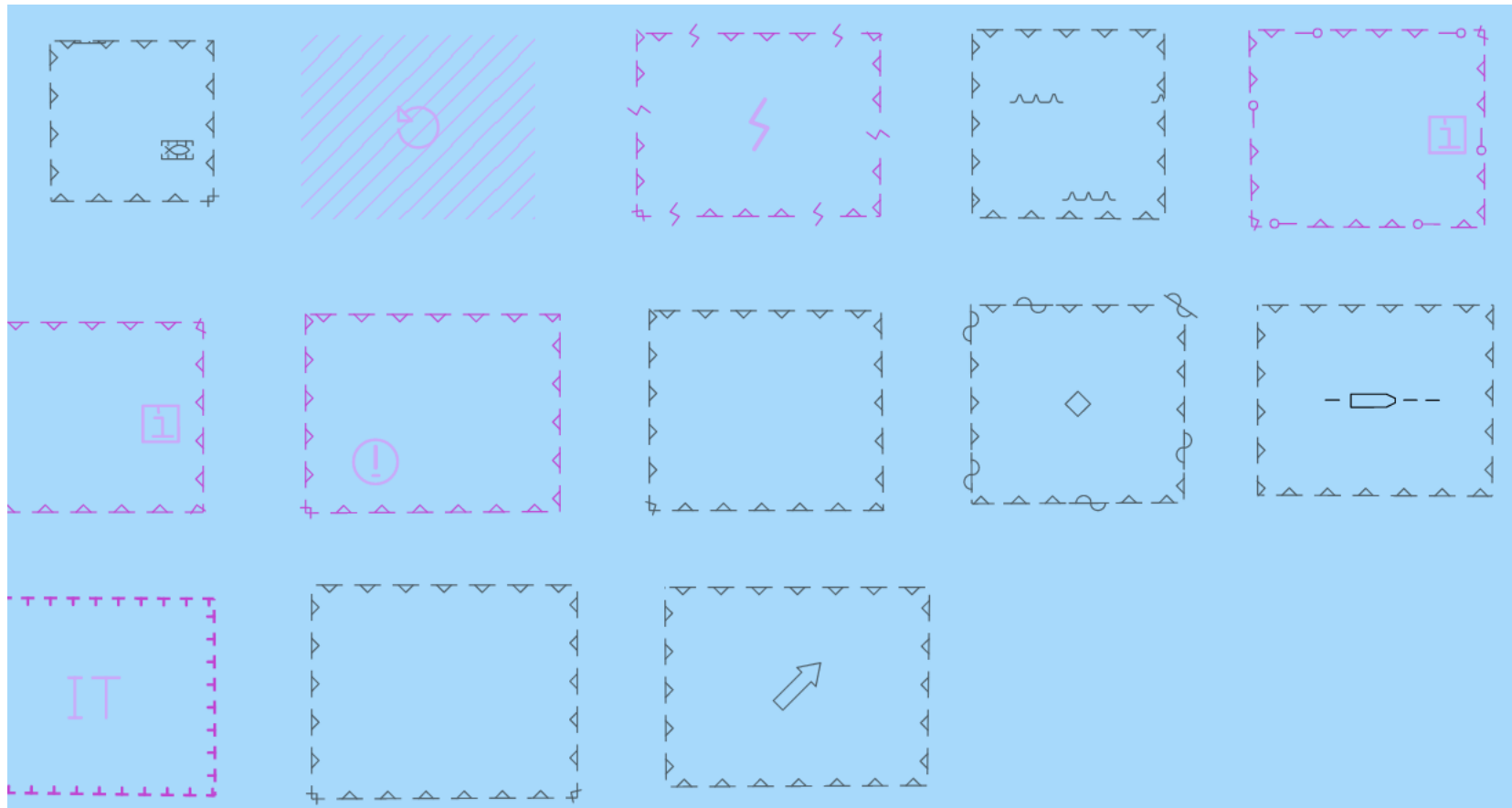


IHO

International
Hydrographic
Organization

3.3.2 b) 3) Dataset Status ACCEPT

- Obs 2 Magvar symbol not shown due to scale





IHO

S-64 3.3.3 DATE DEPENDENT

International
Hydrographic
Organization

- S-101 FC 1.1.0 PC 1.1.2
- Cell GB4X0001
- ShoreECDIS 1.3.0.0 June 06 2023



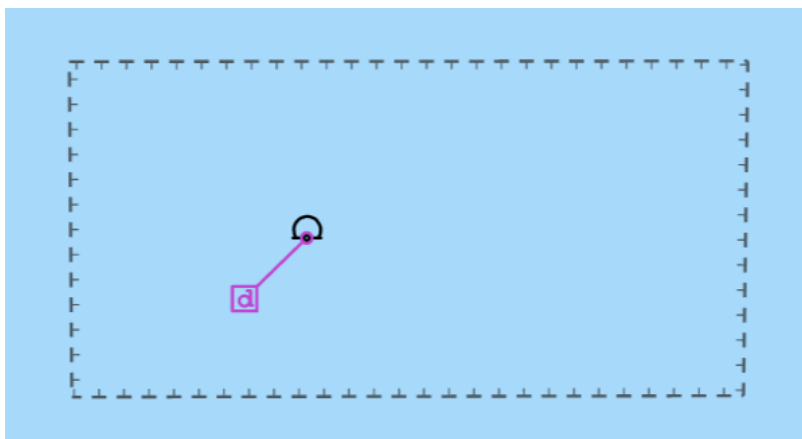
IHO

3.3.3.1 DATASET STATUS ACCEPT

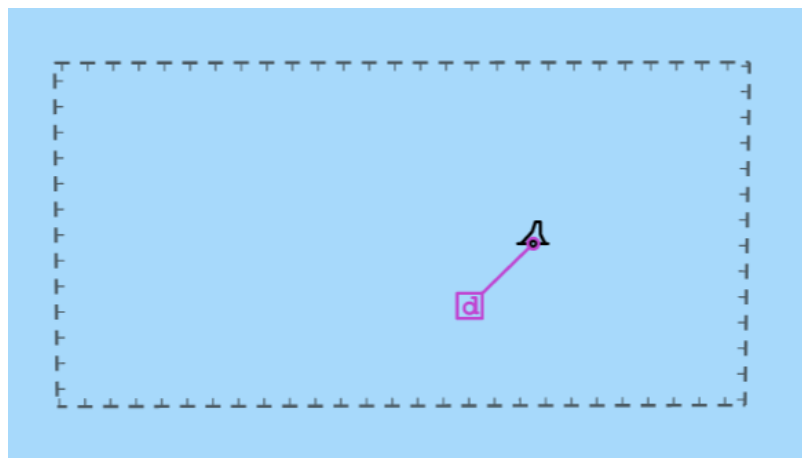
International
Hydrographic
Organization

- Obs 3 WP numbered but omit “WP” prefix ???

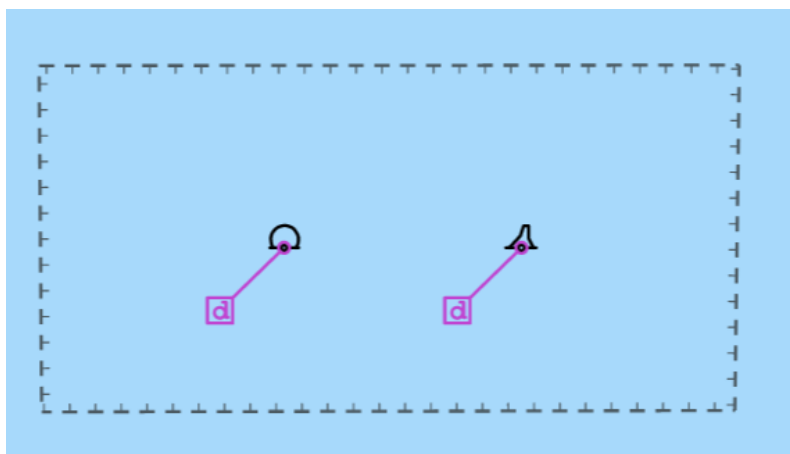
3.3.3.1 a)



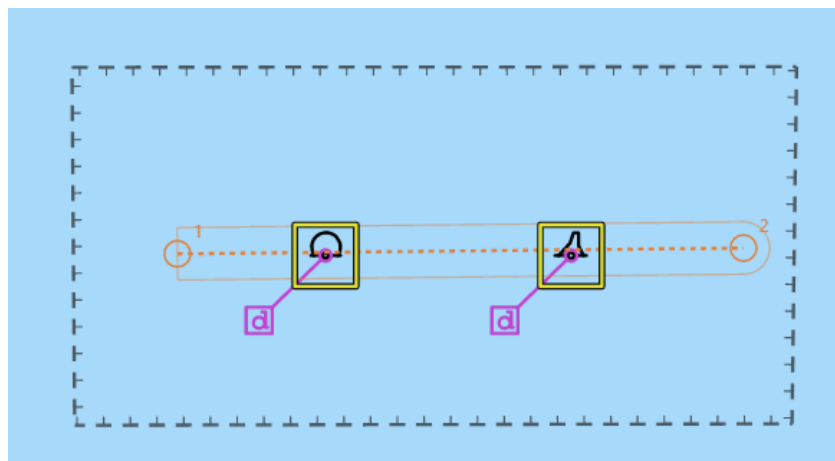
3.3.3.1 b)



3.3.3.1 c)



3.3.3.1 d)





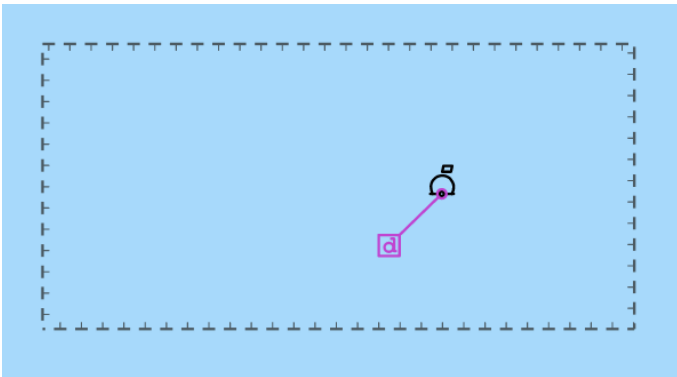
IHO

3.3.3.2 DATASET STATUS ACCEPT

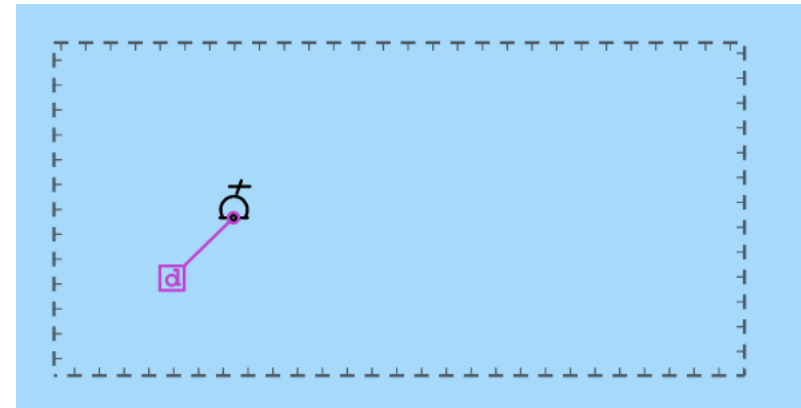
International
Hydrographic
Organization

- Obs 3 WP numbered but omit “WP” prefix ???

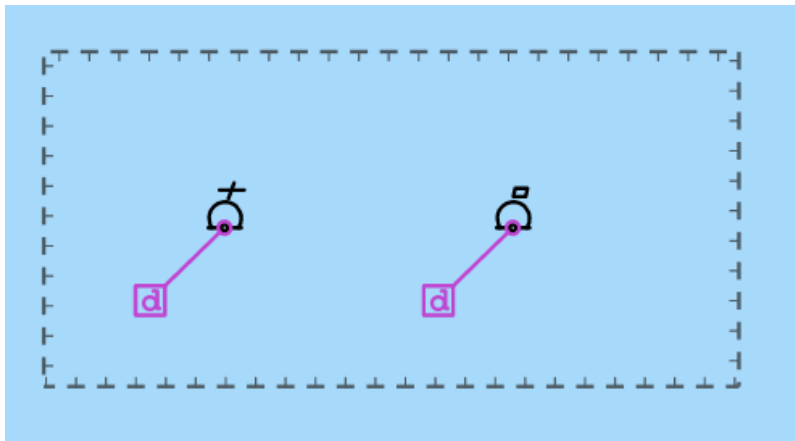
3.3.3.2 a)



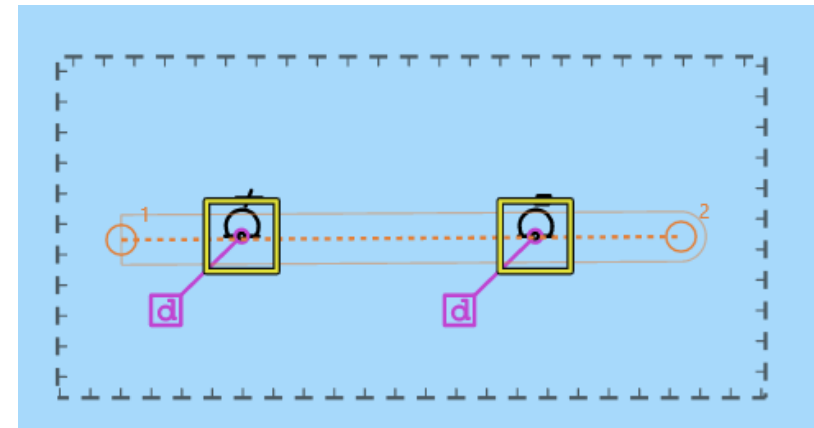
3.3.3.2 b)



3.3.3.2 c)



3.3.3.2 d)





IHO

S-64 3.3.3 DATE DEPENDENT

International
Hydrographic
Organization

- S-101 FC 1.1.0 PC 1.1.2
- Cell GB4X0001
- ShoreECDIS 1.3.0.0 June 06 2023

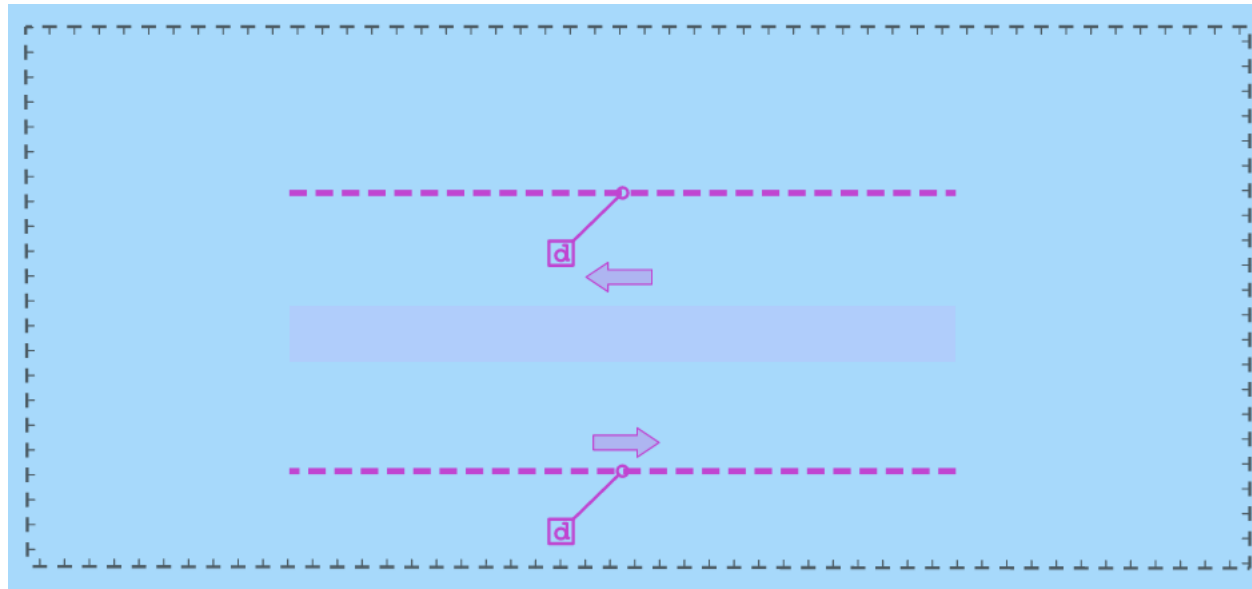


IHO

3.3.3.3 A) DATASET STATUS REVIEW NEEDED

International
Hydrographic
Organization

- Obs 4 Only one of the two TSS systems displays



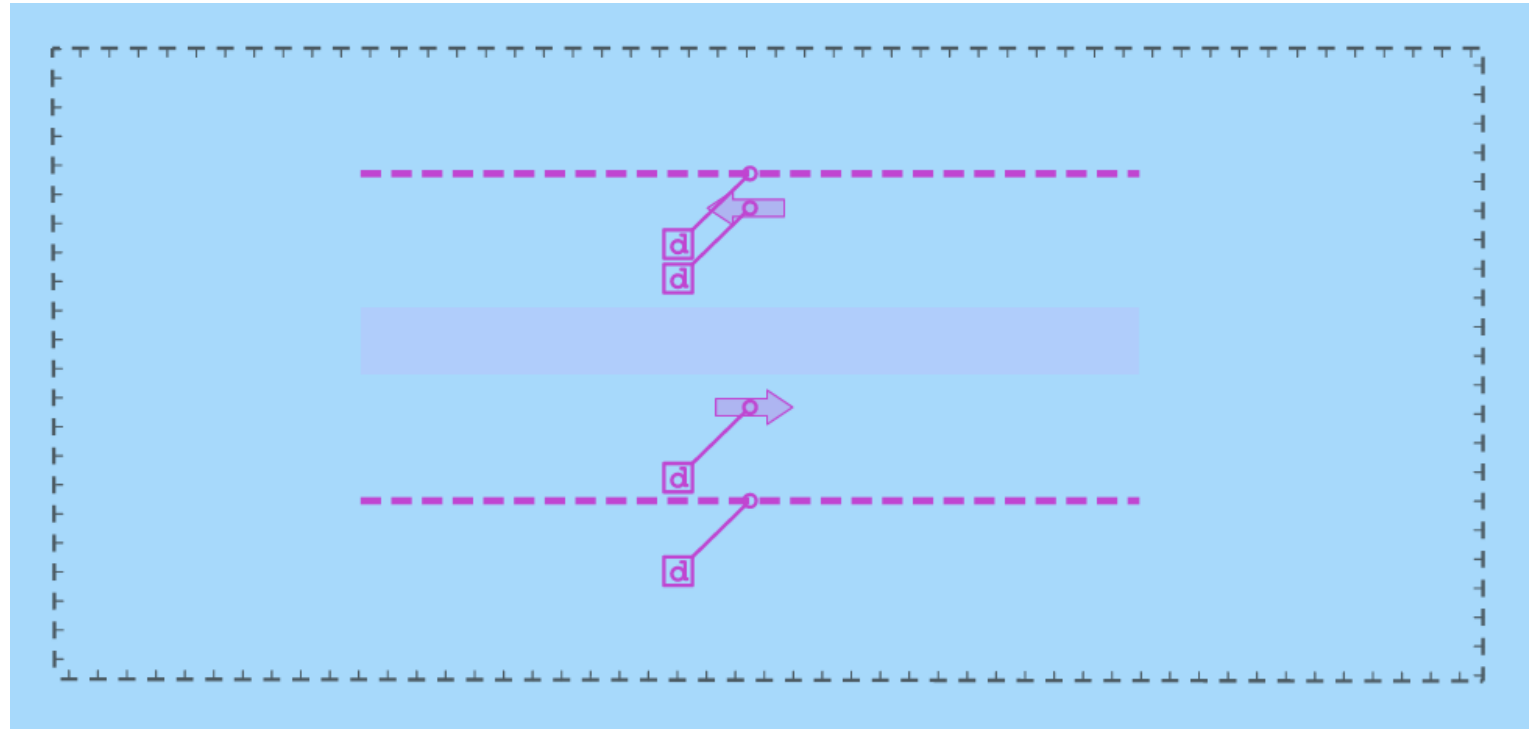


IHO

3.3.3.3 B) DATASET STATUS ACCEPT

International
Hydrographic
Organization

- Display is as expected



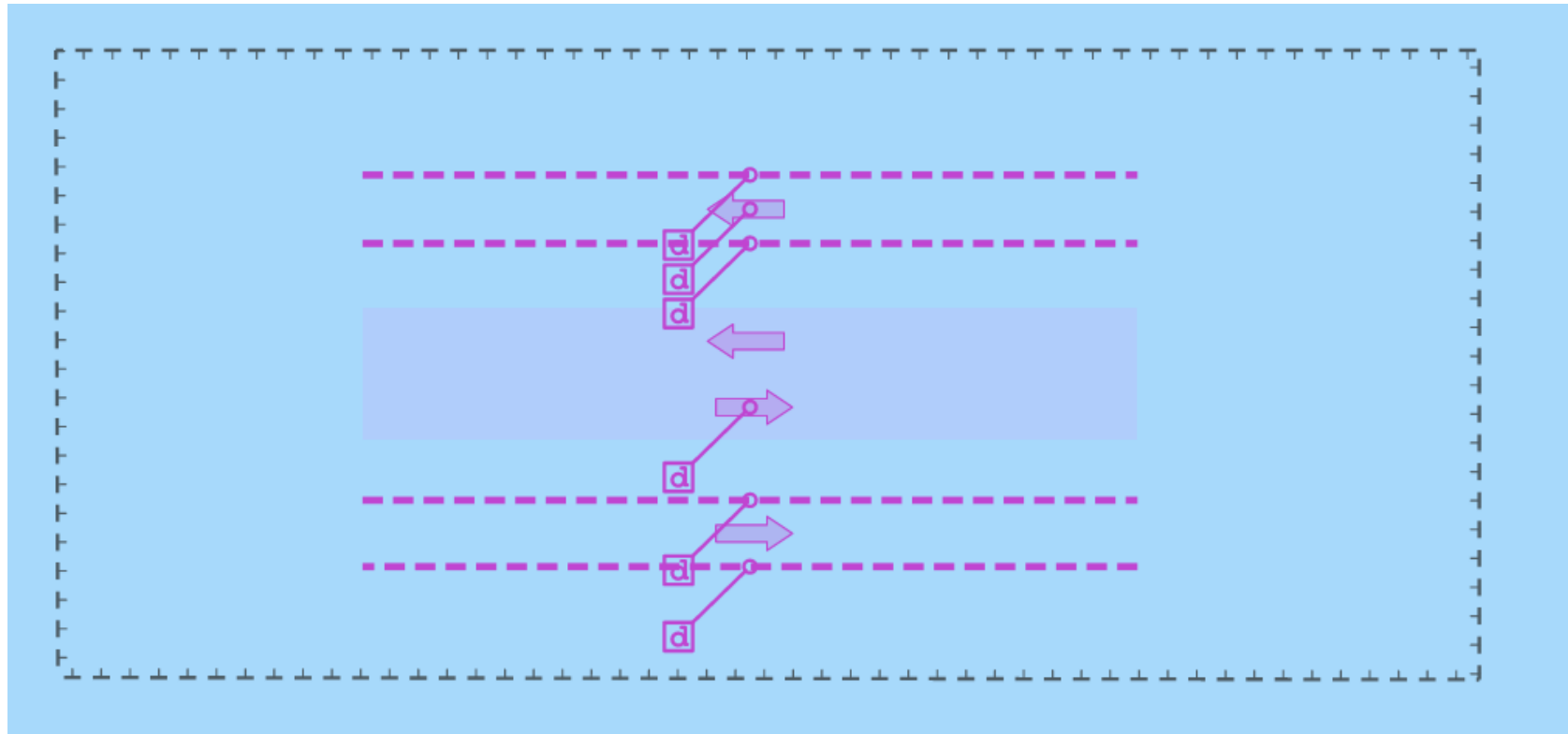


IHO

3.3.3.3 C) DATASET STATUS ACCEPT

International
Hydrographic
Organization

- Display is as expected



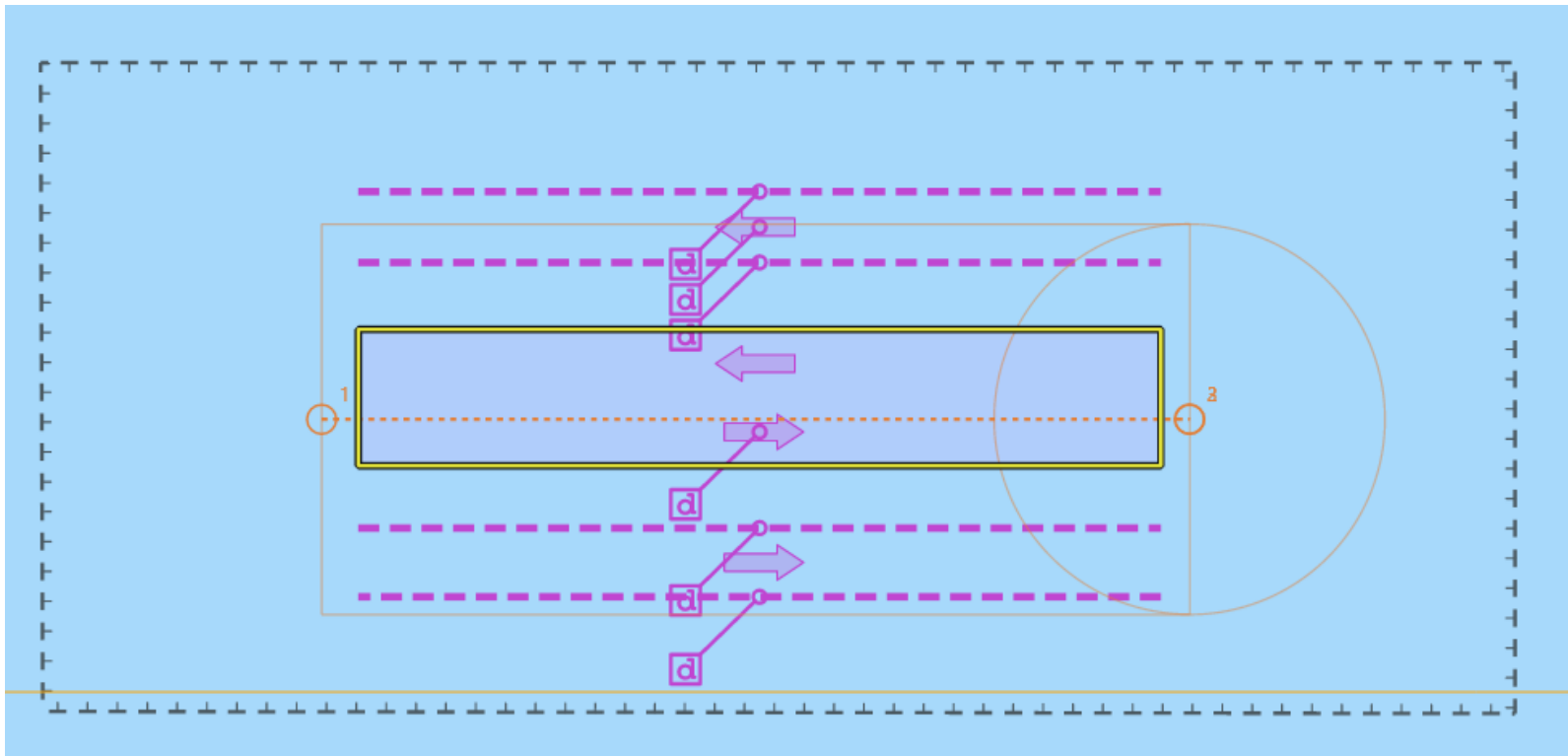


IHO

3.3.3.3 D) DATASET STATUS ACCEPT

International
Hydrographic
Organization

- Display is as expected, Obs 5 note XTE cannot be set for port and starboard





IHO

CURRENT LIMITATIONS

International
Hydrographic
Organization

- Datasets currently reflect S-101 version 1.1.0
- The AA00 producer code has been used in future this will need to be changed 00AA which has now been registered
- Validation has used 7Cs Analyzer which is useful, but validation checks remain immature testing in testbed systems is also needed
- Cells will need to increment to 1.2.0 and then 2.0.0



IHO

WAY AHEAD

International
Hydrographic
Organization

Items to discuss

1. Using the 22 cells to provide the base standard other cells in S-164?
2. To agree that the S-101 TDS Repository is a staging area and datasets should be copied to the S-164 Repository to support S-164 development
3. Consider sharing the review of the converted datasets and preparation of revised S-164 specification using the ShoreECDIS to create images



IHO

International
Hydrographic
Organization

QUESTIONS ?