



IHO Crowdsourced Bathymetry Initiative

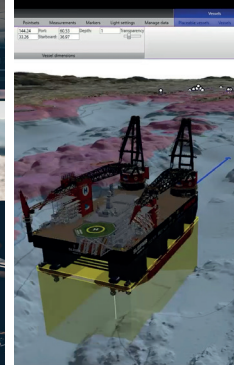
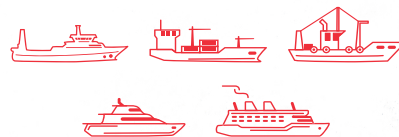
CROWDSOURCED BATHYMETRY

Why?

Just over 1/4 of the world's oceans have been mapped to modern standards. While this marks significant progress from only 6% in 2017, much work remains to be done. Crowdsourced depth data (CSB) can play a crucial role in creating a comprehensive and detailed map of the ocean floor, particularly in remote, difficult-to-access regions or dynamic, constantly changing coastal areas. This data can enhance navigational safety, help identify unknown or mischarted hazards, and increase our knowledge of the ocean.

What is it?

The IHO Crowdsourced Bathymetry Initiative (CSB) is a global citizen science effort to facilitate the gathering of seafloor depth measurements from a diverse range of vessels. Using standard navigation instruments, CSB enables vessels to collect and share depth data while carrying out routine maritime operations.



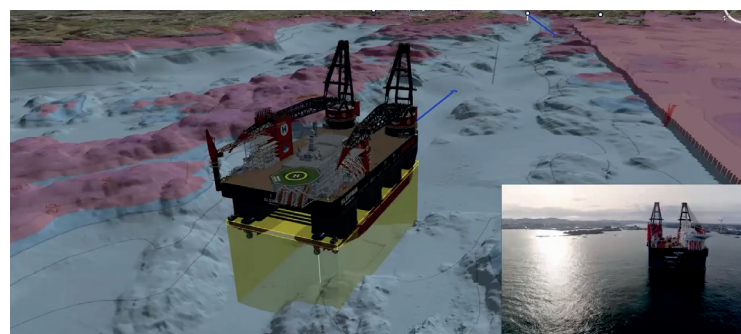
Why contribute to CSB?

Participating in this citizen science initiative benefits both those collecting the data and the communities of data users. Depth data gathered thanks to CSB efforts can fill gaps in our knowledge and provide more recent information on ever-changing coastal areas. It can provide up-to-date information on water depths, shoals, and potential hazards. It supports environmental conservation by identifying critical habitats, monitoring erosion, and studying underwater ecosystems. Furthermore, CSB contributes to research on climate change impacts, coastal zone management, and disaster preparedness, empowering informed decision-making and enhancing risk mitigation.

Who can participate?

Anyone with a vessel and an integrated depth (or echo) sounder!

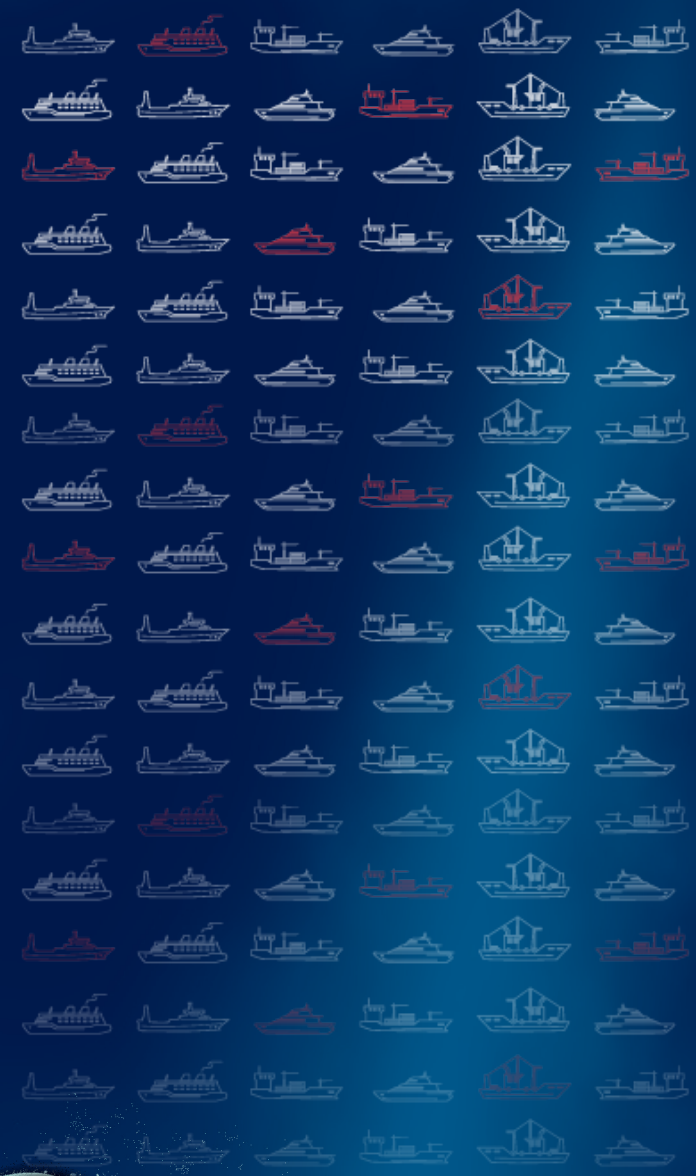




Some CSB Projects

To know more about these projects, [click here](#)

-  **The Great Barrier Reef Project**
-  **The Nippon Foundation-GEOCO Seabed 2030 Project**
-  **Crowd the Bay Program**
-  **The International Sea Keepers Society**
-  **Great Lakes Observing System**



Where does the data go?

Data will be submitted to the International Hydrographic Organization's (IHO) repository for CSB data, the Data Centre for Digital Bathymetry (DCDB).

Contributed data should include depth, position, and a timestamp. While additional information is encouraged, vessel identification details—such as the vessel name or IMO number—are not required prior to uploading to the IHO DCDB database.

How to get Involved?

Whether you have access to specialized equipment or are simply an avid sailor, your contributions can make a meaningful difference. We welcome scientists, researchers, navigators, fishers, or anyocean enthusiasts to join this groundbreaking global initiative, revolutionizing our understanding of the ocean.

For more information contact bathydata@iho.int



To learn more about CSB [click here](#)

